

2522 S Wilmington - 110

Raleigh, NC 27603

OFFICE | RETAIL FOR LEASE



PROPERTY SUMMARY

Address 2522 S Wilmington - Suite 110

Availability Ste 110 - 1,491 SF

Lease Rate \$22.00 PSF NNN

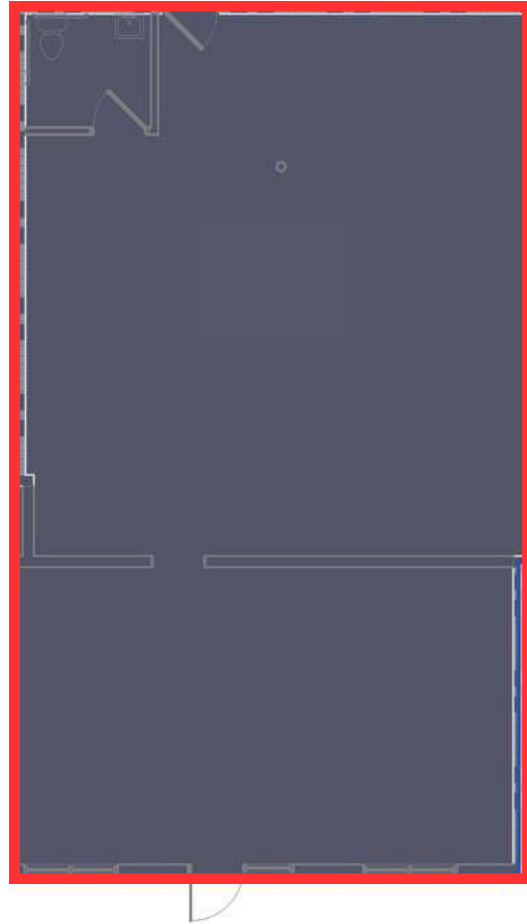
TICAM Est. \$6.00 PSF

Fully renovated, modern space positioned minutes from the emerging Downtown South district and the NC State Farmers Market. Offering 1,491 SF with a flexible layout that works for office, showroom/retail, or light flex uses—plus easy, on-site surface parking for staff and customers.

HIGHLIGHTS

- Flexible plan suitable for office, retail/showroom, studio, or service uses
- Highly accessible S Wilmington St location near Downtown South & Farmers Market
- Quick connectivity to I-40/I-440 and Downtown Raleigh
- Convenient on-site parking with direct, ground-level entry

Floor Plan



Suite 110: 1,491 SF

DOWNTOWN
RALEIGH

DIX PARK

Martin Luther King Jr. Blvd.

NC STATE
FARMERS
MARKET

SITE



S Wilmington St.

CONTACT

Trent Ragland, Broker

(C) 919.815.8414

tragland@atlasstark.com

Tyler Christensen, Broker

(C) 828.999.9459

tchristensen@atlasstark.com



Atlas Stark Holdings LLC |

2020 Progress Ct, Suite 130A, Raleigh, NC

