

PRIME HEART OF LOGAN SQUARE

RAW COMMERCIAL SPACE FOR LEASE—6,000 SF (DIVISIBLE)



Raw commercial space for lease in a prominent one-story commercial building in the heart of Logan Square. Good visibility next to co-tenant the Dill Pickle Food Co-Op and steps to Blue-Line entrance/exit at Spaulding. Located just across from new construction 6-story apartment building with 60 residential units. Close to all Logan Square shopping, dining and entertainment. Pedestrian friendly neighborhood with Walk Score of 96.



Size:

6,000 SF (Divisible to 3,000 SF)

Rental Rate:

\$25 PSF

Rental Type:

NNN

Zoning:

B1-3

Nearby Businesses:

Gorilla Sushi
The Harding Tavern
Hopewell Brewing
Chiya Chai
Wake n Bakery



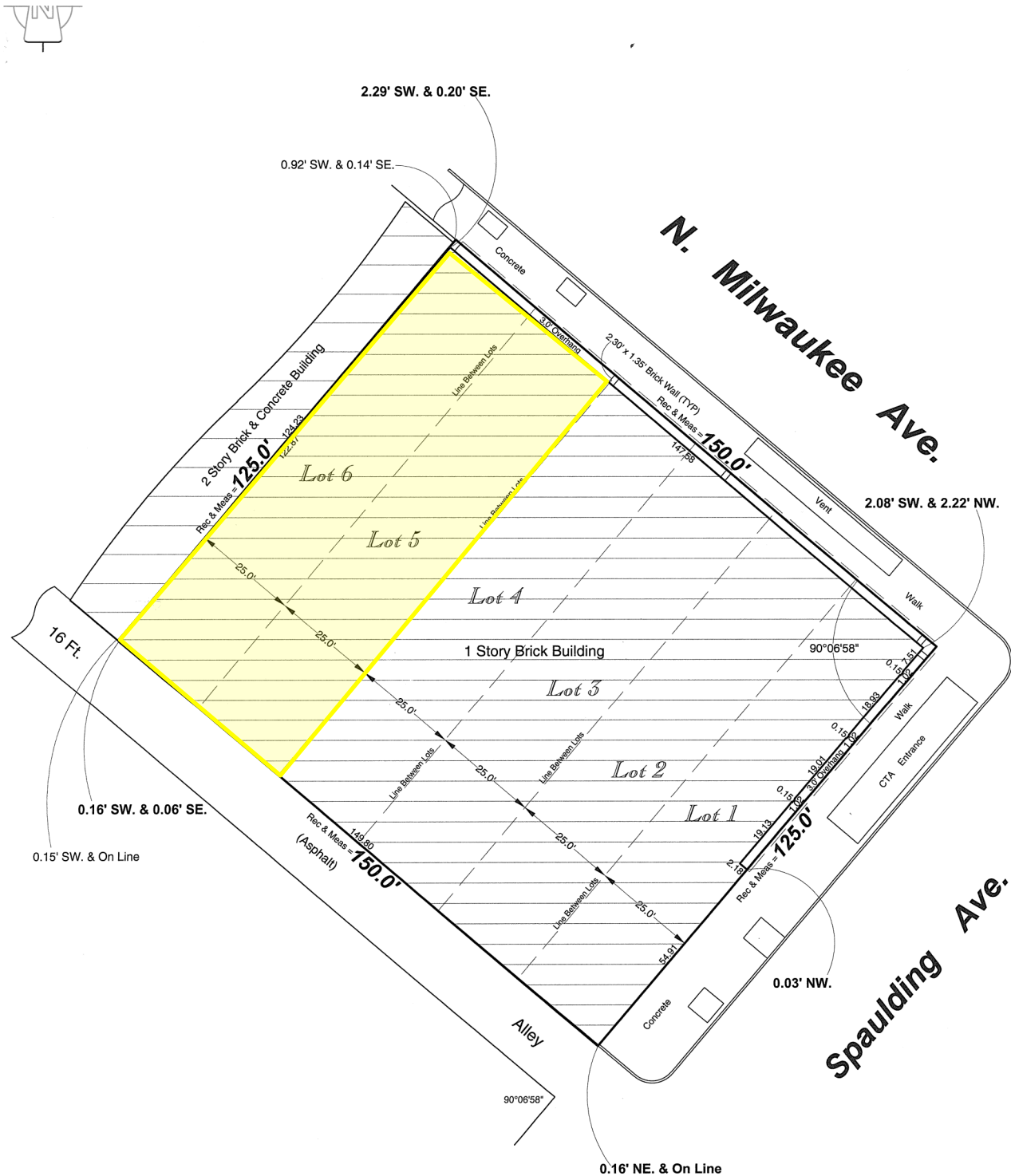
MJ WEINBERGER

847.334.2587

MJ@STRAUSSREALTY.COM

STRAUSS REALTY, LTD.
4220 W. MONTROSE AVE.
CHICAGO, ILLINOIS 60641
PHONE: 773-736-3600

SURVEY



MJ WEINBERGER
847.334.2587
MJ@STRAUSSREALTY.COM

STRAUSS REALTY, LTD.
4220 W. MONTROSE AVE.
CHICAGO, ILLINOIS 60641
PHONE: 773-736-3600

MAP



DEMOGRAPHICS

2023 Estimates by Costar Research

| | 1 mile | 2 miles | 3 miles |
|---------------------------------|-----------|-----------|-----------|
| Population | 64,907 | 220,097 | 500,202 |
| Households | 22,867 | 77,663 | 182,391 |
| Average Household Size | 2.7 | 2.7 | 2.6 |
| Median Age | 36 | 36.4 | 36.4 |
| Average Household Income | \$101,468 | \$111,013 | \$117,508 |



MJ WEINBERGER

847.334.2587

MJ@STRAUSSREALTY.COM

STRAUSS REALTY, LTD.
4220 W. MONTROSE AVE.
CHICAGO, ILLINOIS 60641
PHONE: 773-736-3600