

43 COLUMBIA AVENUE
PONTIAC, MICHIGAN



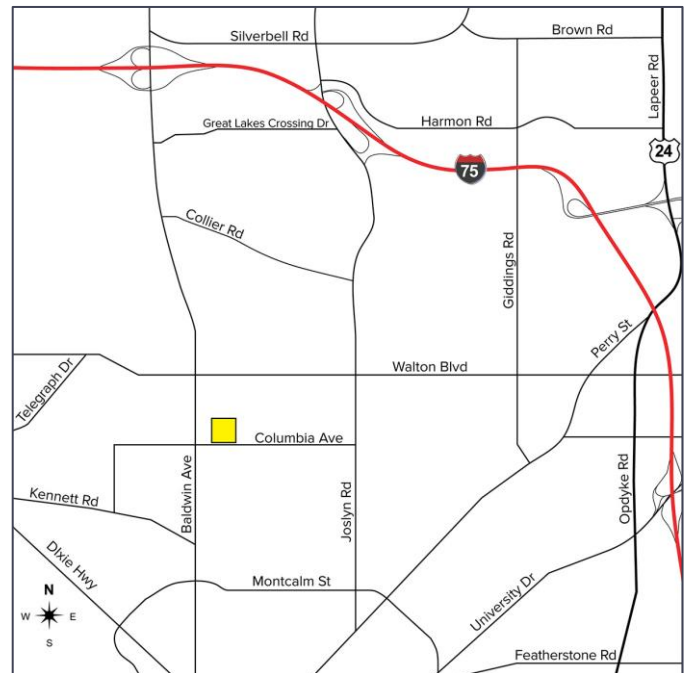
**SIGNATURE
ASSOCIATES**
KNOW SIGNATURE | KNOW RESULTS

LAND FOR SALE
4 Acres Available



PROPERTY FEATURES

- Situated on 4 acres
- Zoned Heavy Industrial
- 640' x 272' dimensions
- All utilities on-site
- Existing condemned school is still on site and needs to be demolished
- Sale Price: \$700,000



For more information, please contact:

KRIS PAWLOWSKI
(248) 359 3801
kpawlowski@signatureassociates.com

SIGNATURE ASSOCIATES
One Towne Square, Suite 1200
Southfield, MI 48076
www.signatureassociates.com