

6,775 SF

**FREEWAY AUTOMOTIVE/SHOWROOM/RETAIL
LEWISVILLE, TX**



Location: 2129 S. Stemmons Freeway, Lewisville, TX
2-Tenant building with **SafeLite Auto Glass**.

Build Out: Showroom – +/- 1,743 RSF
Automotive area - +/- 5,032 RSF

Traffic: 187,486 cpd (2023 Dallas District Traffic Map).

Base Rent: \$14.00/SF + NNN's.

Available: February, 2025.

For further information contact: Rich Muller



Vintage Realty

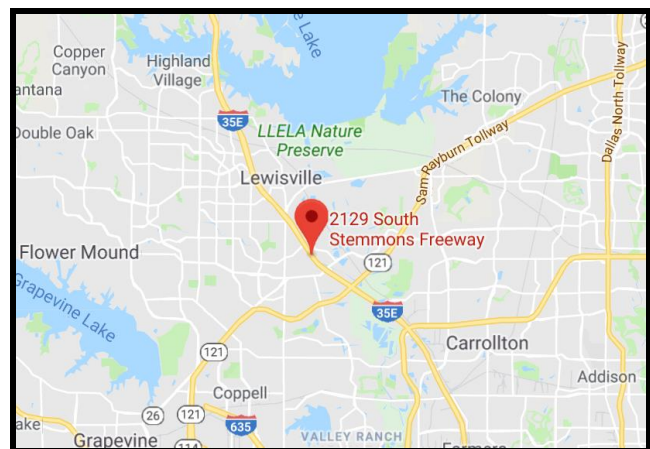
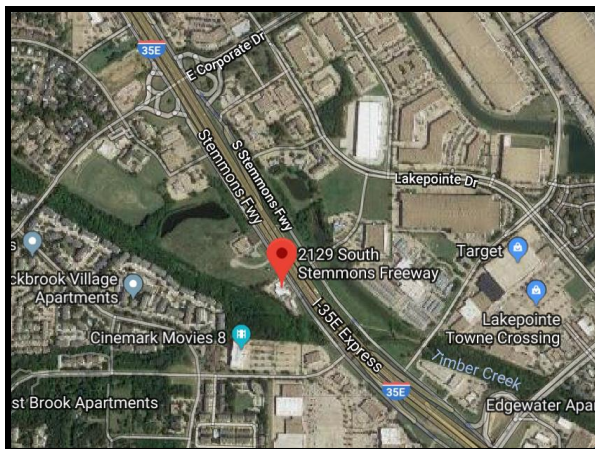
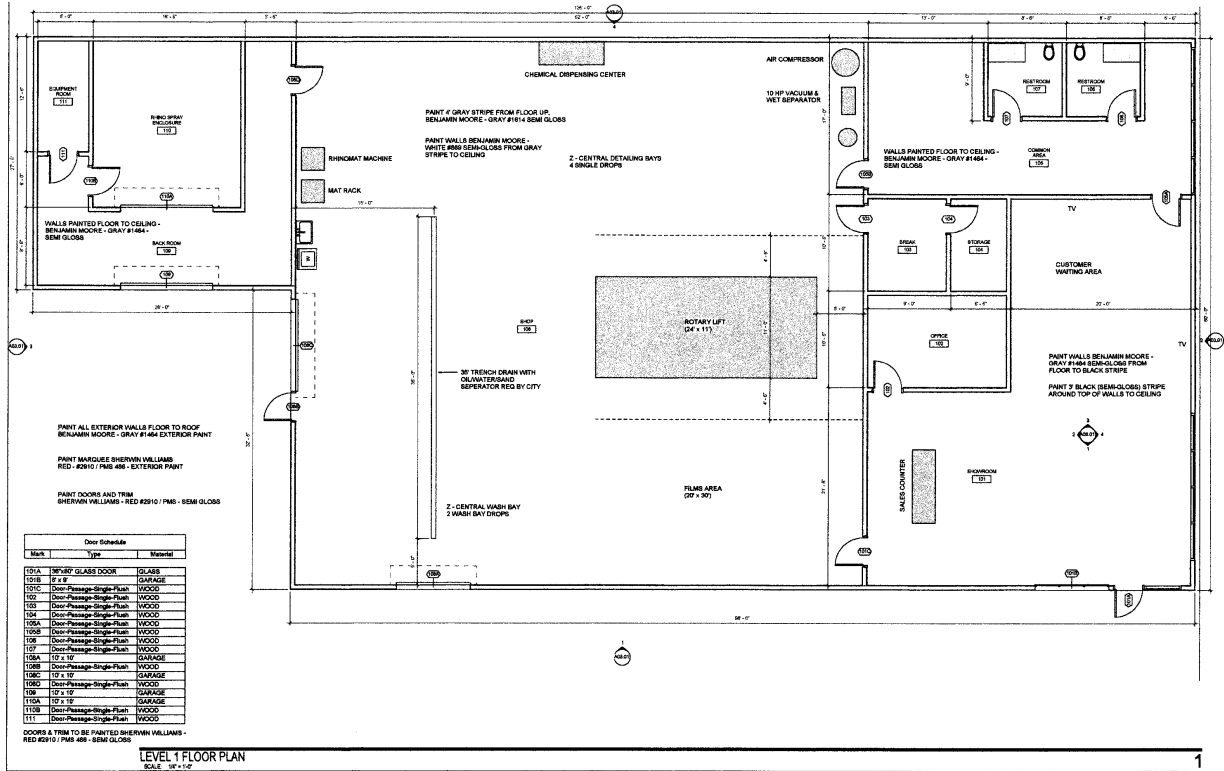
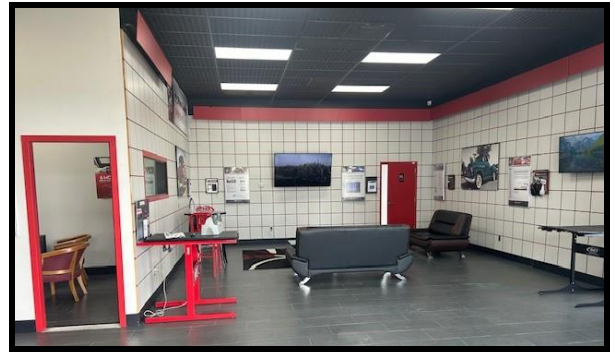
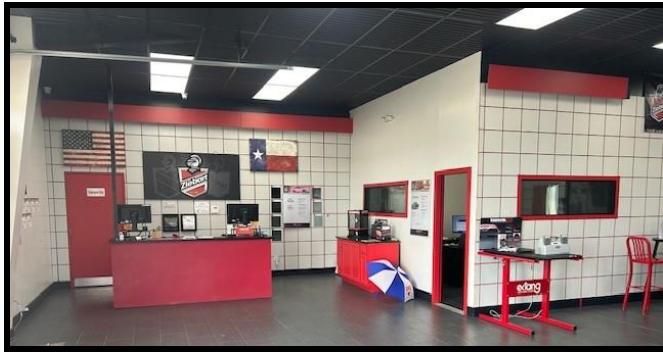
2980 Long Prairie Rd., Suite D

Flower Mound, TX 75022

972/355-0669 or Fax 972/355-5477

Email: Rich@VintageRealty.net or, www.VintageRealty.net

This information is believed to be accurate, but no representation or warranty, express or implied, as to its accuracy or completeness is made by any party. The presentation of this property is submitted subject to errors, omissions, change of price or prior sale or lease, or withdrawal without notice.



This information is believed to be accurate, but no representation or warranty, express or implied, as to its accuracy or completeness is made by any party. The presentation of this property is submitted subject to errors, omissions, change of price or prior sale or lease, or withdrawal without notice.