

915 F ST NW

Washington, DC 20004

Office For Lease

1,528 - 1,635 SF



Leasing Information:
202.513.6700

Lincoln

Merrill Turnbull
202.513.6713
mturnbull@lpc.com

Adam Biberaj
202.513.6736
abiberaj@lpc.com

Tim Whitebread
202.513.6712
twhitebread@lpc.com

McKay Elliott
202.513.6724
melliott@lpc.com

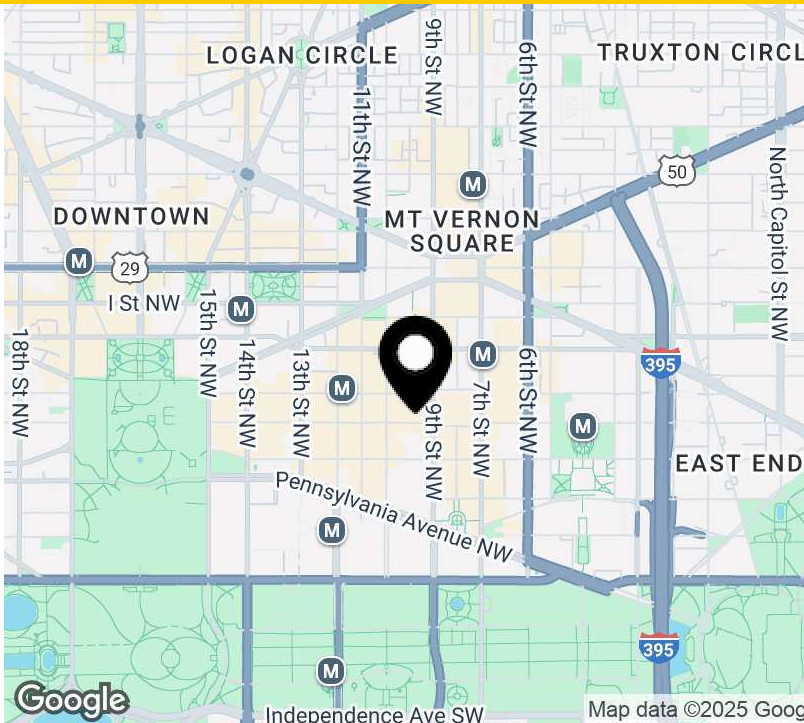
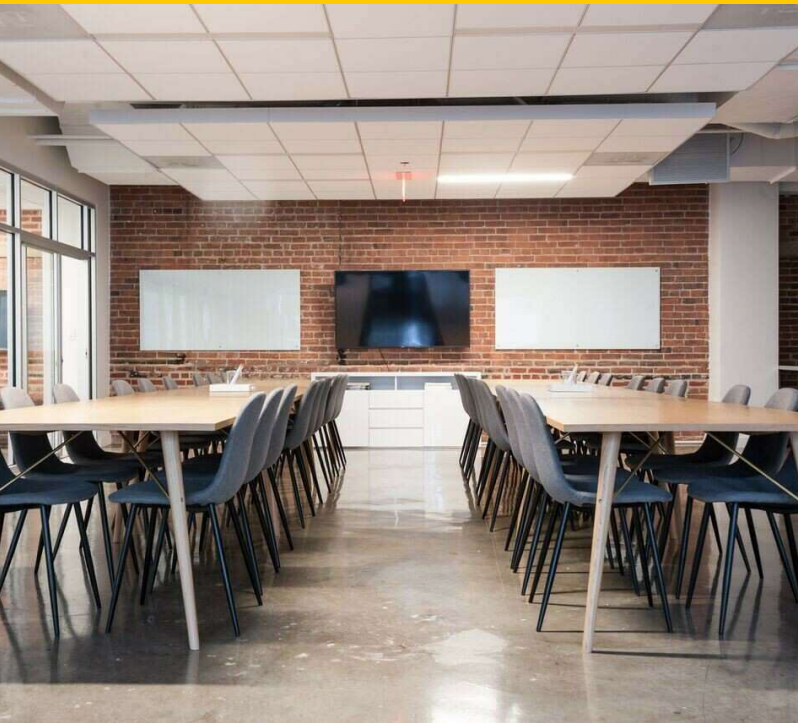
Lincoln Property Company
101 Constitution Avenue, NW | Suite 325 East
Washington, DC 20001

www.lpc.com

915 F ST NW

Washington, DC 20004

Office For Lease



Property Highlights	Availabilities	SF	Lease Rate	Date Available
<ul style="list-style-type: none">• Prime historic charm with modern functionality office space.• Full floor availability• Located just two blocks from Metro Center,• Surrounded by an array of restaurants, retail shops, and cultural attractions,• Situated in the heart of the vibrant Penn Quarter neighborhood,	3rd Floor	1,528 SF	Negotiable	Immediately
	4th Floor	1,586 SF	Negotiable	Immediately
	5th Floor	1,576 SF	Negotiable	Immediately
	6th Floor	1,635 SF	Negotiable	Immediately
	7th Floor	1,575 SF	Negotiable	Immediately

Merrill Turnbull
202.513.6713
mturnbull@lpc.com

Adam Biberaj
202.513.6736
abiberaj@lpc.com

Tim Whitebread
202.513.6712
twhitebread@lpc.com

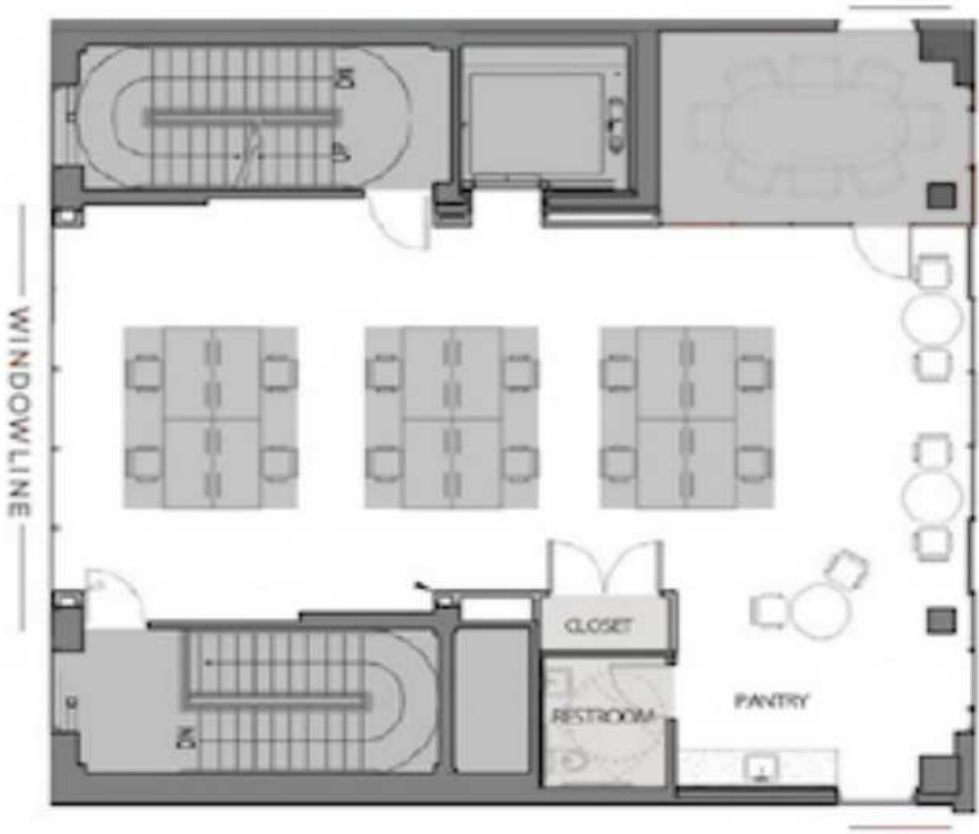
McKay Elliott
202.513.6724
melliott@lpc.com

Lincoln

915 F ST NW

Washington, DC 20004

3rd Floor



Suite	Size	Lease Rate	Description
■ 3rd Floor	1,528 SF	Negotiable	Available immediately. Ready to go suite.

Merrill Turnbull
202.513.6713
mturnbull@lpc.com

Adam Biberaj
202.513.6736
abiberaj@lpc.com

Tim Whitebread
202.513.6712
twhitebread@lpc.com

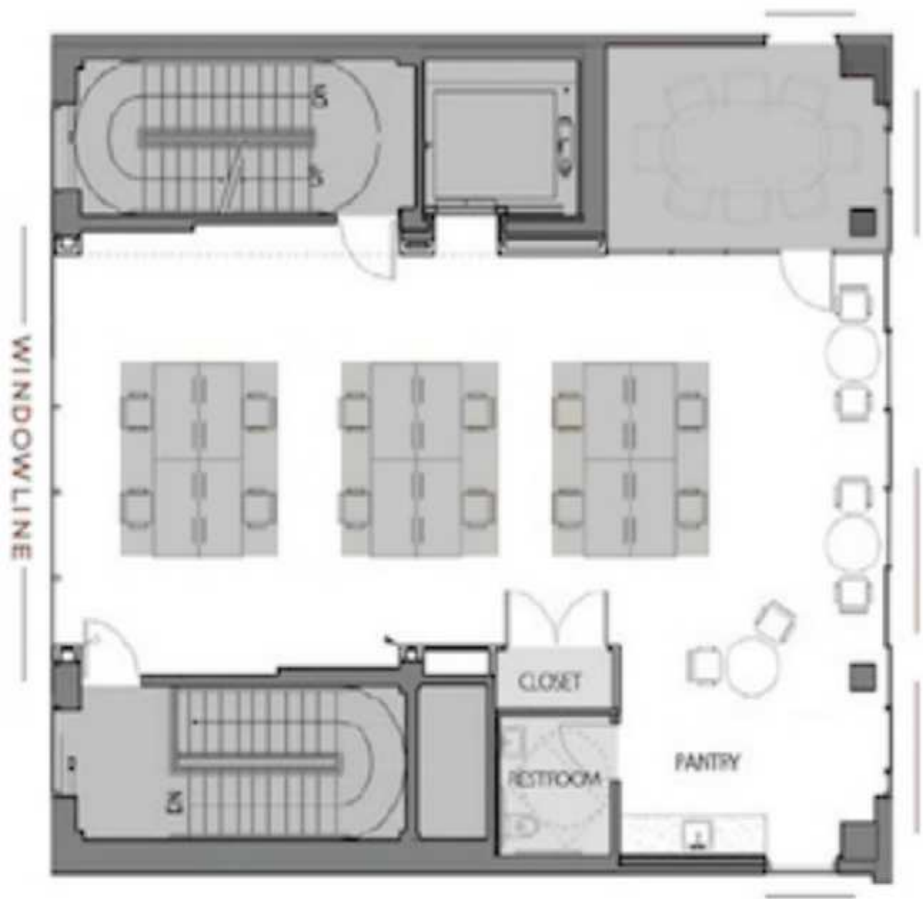
McKay Elliott
202.513.6724
melliott@lpc.com

Lincoln

915 F ST NW

Washington, DC 20004

4th Floor



Suite	Size	Lease Rate	Description
■ 4th Floor	1,586 SF	Negotiable	Available immediately. Ready to go suite.

Merrill Turnbull
202.513.6713
mturnbull@lpc.com

Adam Biberaj
202.513.6736
abiberaj@lpc.com

Tim Whitebread
202.513.6712
twhitebread@lpc.com

McKay Elliott
202.513.6724
melliott@lpc.com

Lincoln

915 F ST NW

Washington, DC 20004

5th Floor



Suite	Size	Lease Rate	Description
■ 5th Floor	1,576 SF	Negotiable	Available immediately. Ready to go suite.

Merrill Turnbull
202.513.6713
mturnbull@lpc.com

Adam Biberaj
202.513.6736
abiberaj@lpc.com

Tim Whitebread
202.513.6712
twhitebread@lpc.com

McKay Elliott
202.513.6724
melliott@lpc.com

Lincoln

915 F ST NW

Washington, DC 20004

6th Floor



Suite	Size	Lease Rate	Description
■ 6th Floor	1,635 SF	Negotiable	Available immediately. Ready to go suite.

Merrill Turnbull
202.513.6713
mturnbull@lpc.com

Adam Biberaj
202.513.6736
abiberaj@lpc.com

Tim Whitebread
202.513.6712
twhitebread@lpc.com

McKay Elliott
202.513.6724
melliott@lpc.com

Lincoln

915 F ST NW

Washington, DC 20004

7th Floor



Suite	Size	Lease Rate	Description
■ 7th Floor	1,575 SF	Negotiable	Available immediately. Ready to go suite.

Merrill Turnbull
202.513.6713
mturnbull@lpc.com

Adam Biberaj
202.513.6736
abiberaj@lpc.com

Tim Whitebread
202.513.6712
twhitebread@lpc.com

McKay Elliott
202.513.6724
melliott@lpc.com

Lincoln

915 F ST NW

Washington, DC 20004

Location Map



Merrill Turnbull
202.513.6713
mturnbull@lpc.com

Adam Biberaj
202.513.6736
abiberaj@lpc.com

Tim Whitebread
202.513.6712
twhitebread@lpc.com

McKay Elliott
202.513.6724
melliott@lpc.com

Lincoln



915 F ST NW

Washington, DC 20004

Leasing Information:
202.513.6700

Merrill Turnbull
202.513.6713
mturnbull@lpc.com

Adam Biberaj
202.513.6736
abiberaj@lpc.com

Tim Whitebread
202.513.6712
twhitebread@lpc.com

McKay Elliott
202.513.6724
melliott@lpc.com

Lincoln

Lincoln Property Company
101 Constitution Avenue, NW Suite 325 East
Washington, DC 20001

www.lpc.com