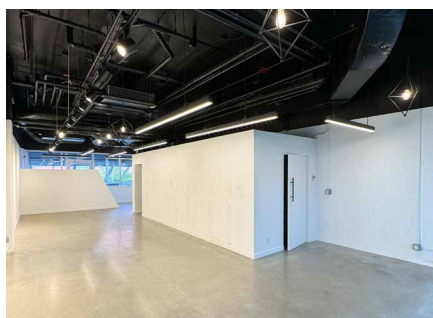
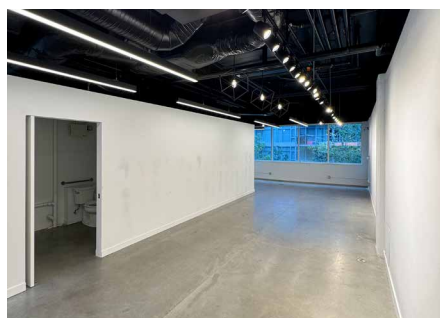


**AVISON
YOUNG**

For Lease

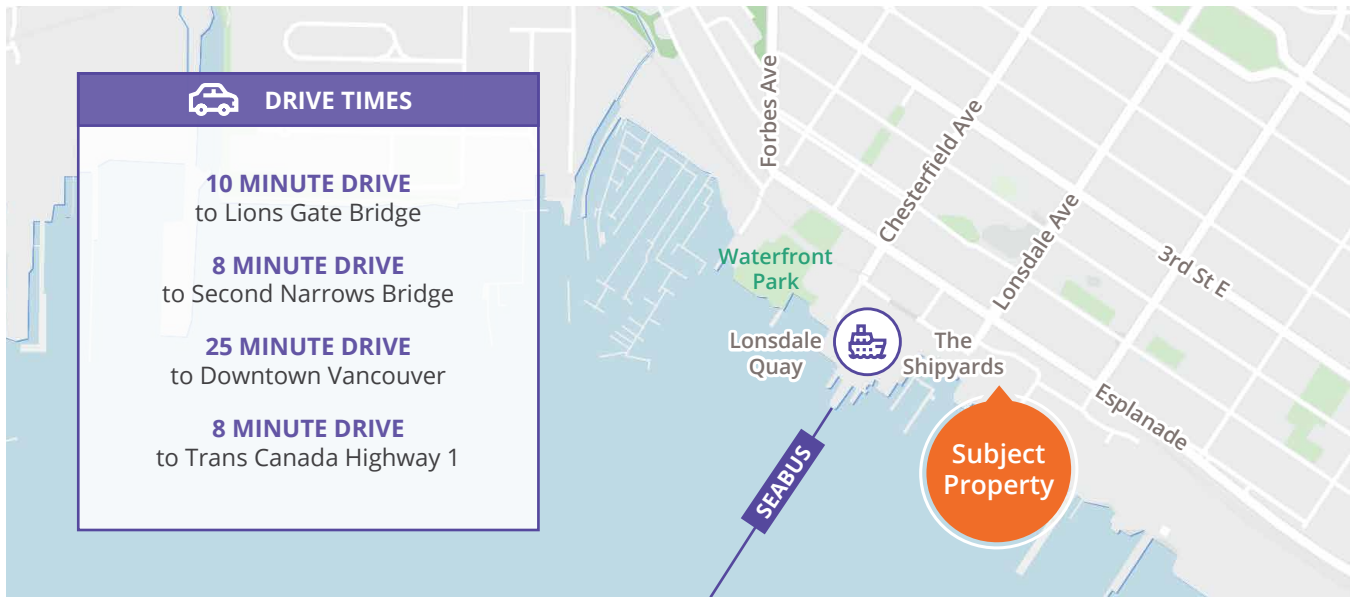
#222 - 125 Victory Ship Way
North Vancouver, BC



Unique second floor retail
space available for lease in
The Shipyards District

Ian Whitchelo*, Principal
604 647 5095
ian.whitchelo@avisonyoung.com
**Ian Whitchelo Personal Real Estate Corporation*

Rory Thies, Associate
604 243 9591
rory.thies@avisonyoung.com



Property details

SIZE

958 square feet

ZONING

CD – 393 permitting a variety of retail and office uses

LEASE RATE

\$35.00 psf per annum

ADDITIONAL RENT

\$24.12 psf per annum, (2025 estimate)

AVAILABILITY

Immediate

Building highlights



High profile location



Abundant natural light from the east and west



Abundant shops and restaurants in the immediate area



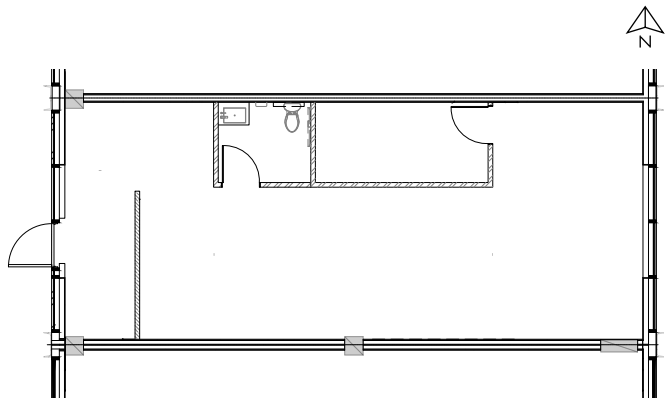
Underground parking nearby



Steps away from the Lonsdale Quay and SeaBus station

Location

Located in the heart of the thriving Shipyard District of Lower Lonsdale, 125 Victory Ship Way is in close proximity to Lonsdale Quay Market, the SeaBus, and many local restaurants, cafes, and retail outlets. This area is one of the North Shore's premier commercial districts, offering busy pedestrian traffic year-round and houses several local businesses and offices.



#2900-1055 West Georgia Street
P.O. Box 11109 Royal Centre
Vancouver, BC V6E 3P3, Canada

© 2025, Avison Young. Information contained herein was obtained from sources deemed reliable and, while thought to be correct, have not been verified. Avison Young does not guarantee the accuracy or completeness of the information presented, nor assumes any responsibility or liability for any errors or omissions therein.

avisonyoung.ca

**AVISON
YOUNG**

**BEST
MANAGED
COMPANIES**
Platinum member