

40TH STREET MEDICAL PLAZA

16601 N 40TH STREET, PHOENIX, AZ 85032



16601
Medical Space
AVAILABLE FOR LEASE

 **TRANSWESTERN**

PROPERTY DETAILS

Availabilities

SUITE 101: $\pm 2,779$ SF

SUITE 115: $\pm 2,643$ SF

SUITE 129: ± 993 SF

SUITE 222: $\pm 1,081$ SF

SUITE 227: $\pm 2,174$ SF

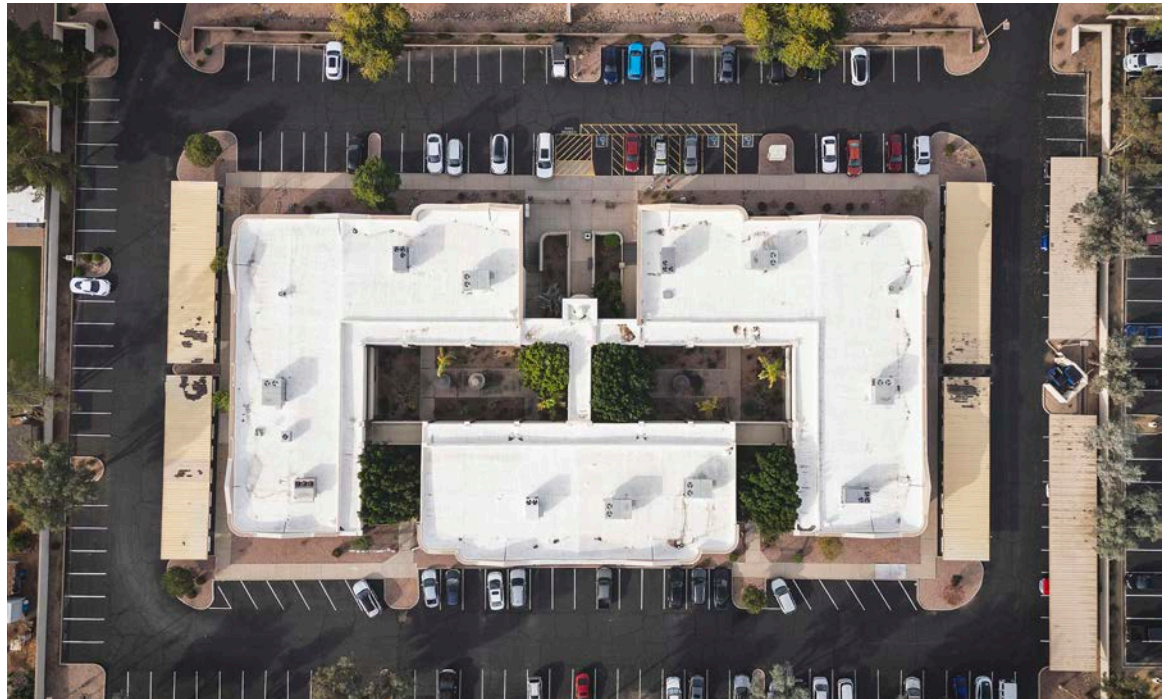
40th STREET
MEDICAL PLAZA

Rent Rate:

\$18.00 NNN + 3% ANNUAL
ESCALATIONS

Highlights

- MONUMENT SIGNAGE AVAILABLE
- CLOSE PROXIMITY TO ABRAZO
SCOTTSDALE HOSPITAL CAMPUS
- EASY ACCESS TO 51 FREEWAY
- COVERED, RESERVED PARKING

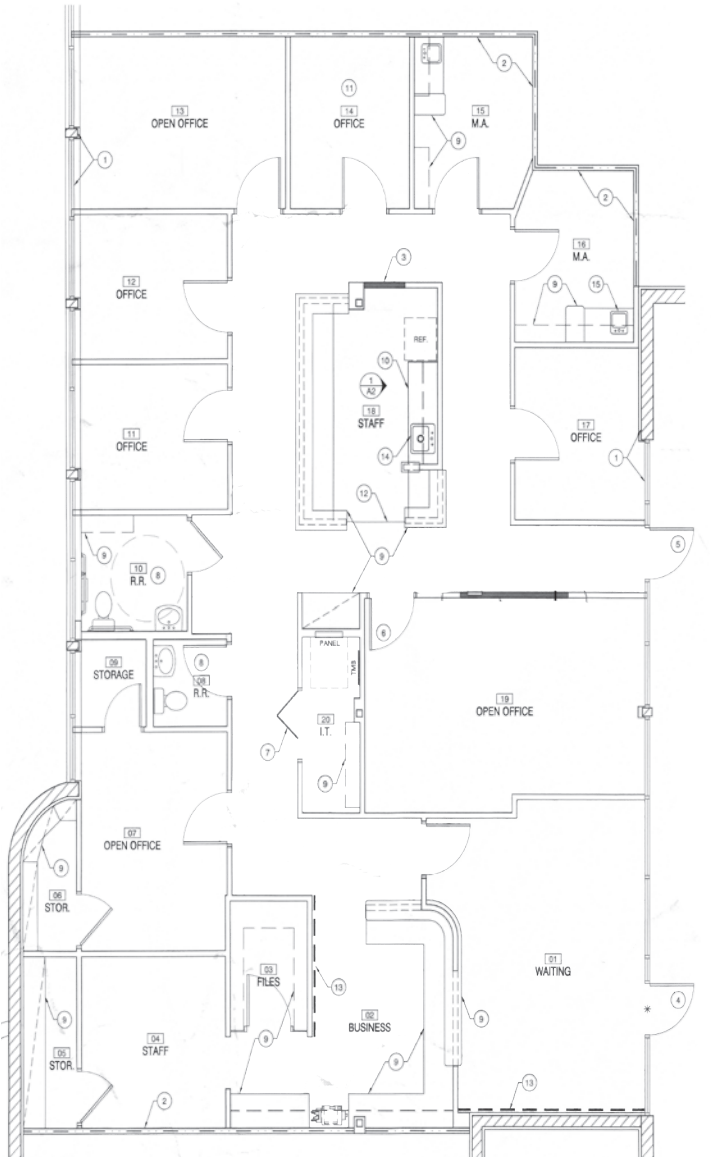


FLOORPLAN

1ST FLOOR



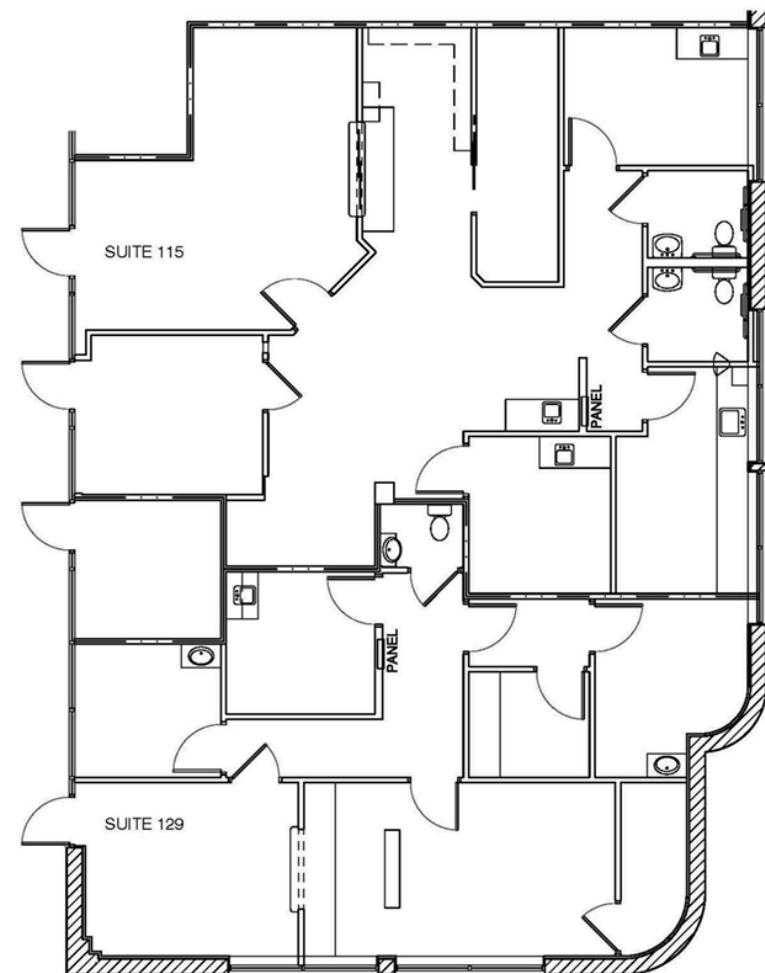
SUITE 101 : ±2,779 SF



SUITE 115: ±1,650 SF

SUITE 129: ±993 SF

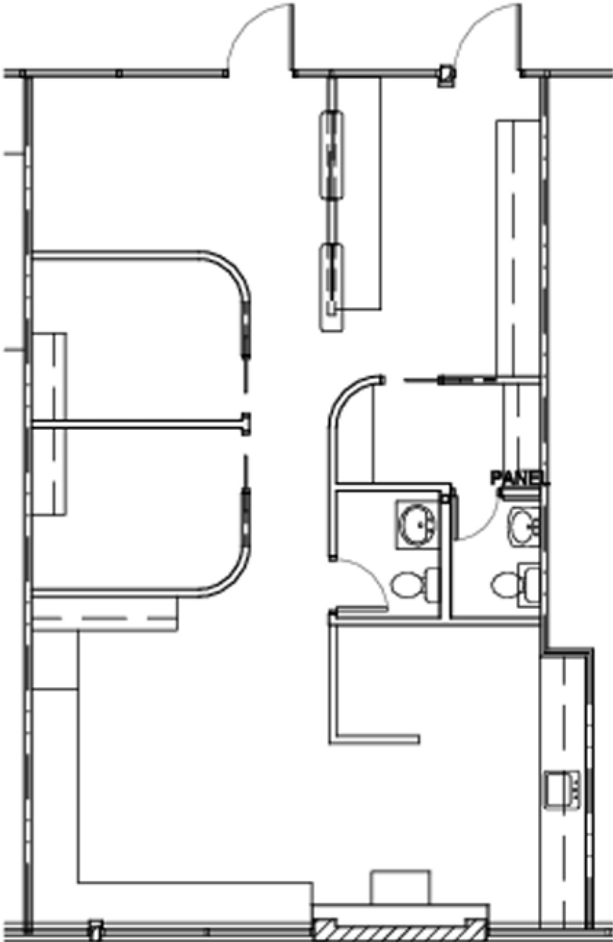
Total SF: ±2,643 SF



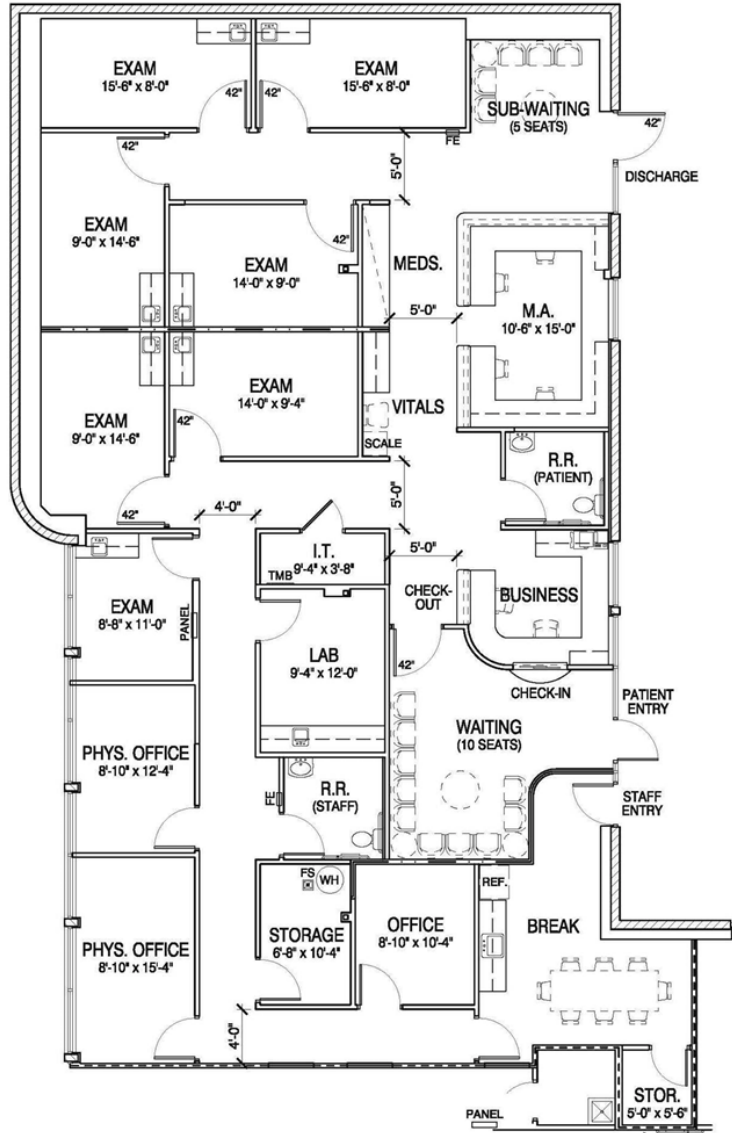
FLOORPLAN



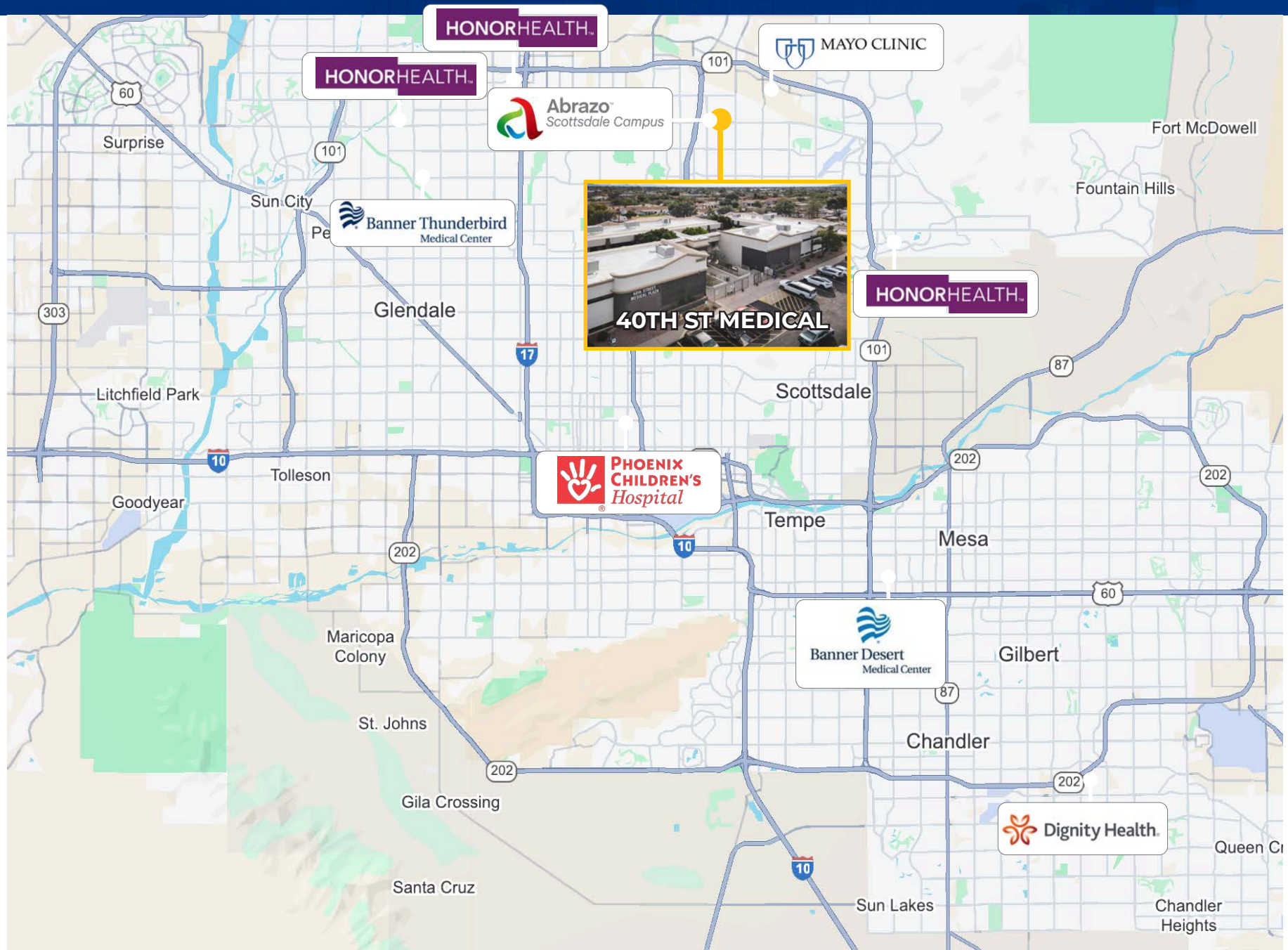
SUITE 222 : ±1,081 SF



SUITE 227 : ±2,174 SF



NEARBY HOSPITALS



40TH STREET MEDICAL PLAZA

16601 N 40TH STREET, PHOENIX, AZ 85032

40th STREET
MEDICAL PLAZA

KATHLEEN MORGAN

Managing Director

T (602) 809-1048

Kathleen.morgan@transwestern.com

VINCE FEMIANO

Managing Director

T (602) 791-3310

Vince.femiano@transwestern.com

KEVIN SMIGIEL

Vice President

T (602) 550-9295

Kevin.smigiel@transwestern.com

ANDREW OLIVET

Associate

T (602) 370-2685

Andrew.olivet@transwestern.com

The information provided herein was obtained from sources believed reliable; however, Transwestern makes no guarantees, warranties or representations as to the completeness or accuracy thereof. The presentation of this property is submitted subject to errors, omissions, change of price or conditions, prior sale or lease, or withdrawal without notice. Copyright © 2025 Transwestern



TRANSWESTERN