

Centre Court

Desirable 18-Unit
Mixed-Use Building
in Seattle's Highly
Coveted Queen Anne
Neighborhood

18 UNITS • BUILT 2002

116 Warren Ave N, Seattle, WA

CBRE



EXCLUSIVELY LISTED BY THE **CBRE PNW MULTIFAMILY TEAM**

THE OFFERING

Desirable 18-Unit Mixed-Use Building in Seattle's Highly Coveted Queen Anne Neighborhood

CBRE proudly presents Centre Court Apartments, an exceptional investment property in Seattle's highly coveted Queen Anne neighborhood. Constructed in 2002, this mixed-use condominium building offers 4,335 square feet of ground-floor office space with a two story layout, soaring 17-foot ceilings, and a private parking garage for six vehicles, an invaluable amenity in this urban setting.

Above the office suite, the residential component features 18 spacious two- and three-bedroom units, each exceeding 1,000 square feet. There is a second, resident only, parking garage for 22 vehicles. Residents enjoy access to a rooftop deck with sweeping views of Downtown Seattle and Puget Sound, adding to the property's appeal and premium positioning. These oversized layouts are a rarity in Seattle's multifamily market, driving strong tenant demand and premium rental potential.

Located at 116 Warren Ave N, Centre Court benefits from Queen Anne's vibrant community, walkable amenities like Climate Pledge Arena, and proximity to Downtown Seattle and South Lake Union's employment centers. With opportunities for rental income growth, condo resale optionality, and long-term appreciation in one of Seattle's most desirable neighborhoods, Centre Court Apartments represents a truly compelling investment offering.



Centre Court

PROPERTY SUMMARY

Address	116 Warren Ave N Seattle, WA
Price	\$10,689,000
Units	18 + 4,345 SF Office
Year Built	2002
Stories	8
Net Rentable Area	19,314 SF Residential 4,345 SF Commercial
Avg. Unit Size	1,073 SF
Lot Size	7,080 SF
Zoning	SM-UP 85 (M)
Submarket	Queen Anne

Investment Highlights



Secured Access Entry



Modern Construction & Systems



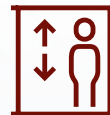
Two Parking Garages - 6 & 22 stalls



In Unit Washer/Dryer



Value-Add Potential



Elevator



In Unit Gas Fireplaces



Rooftop Deck



**Private Decks w/
City & Sound Views**



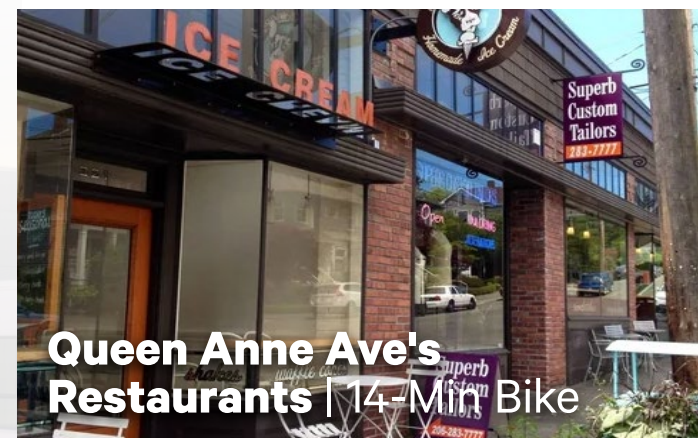
**Large Two and Three
Bedroom Units**



96 Walkscore®



**Walking Distance to
Climate Pledge Arena**



**Queen Anne Ave's
Restaurants | 14-Min Bike**



**Climate Pledge
Arena | 5-Min Walk**



**Seattle CBD
7-Min Drive**



**Amazon Spheres
5-Min Drive**



First Hill

12 Minutes • 20,000 Medical Jobs

Seattle CBD

7 Minutes • 250,000 Jobs

Capitol Hill

10 Minutes • 400+ Eateries/Shops/Bars

South Lake Union

5 Minutes • 65,000 Jobs

Belltown Shopping/Dining

3 Minutes • 200+ Shops/Eateries/Bars

Lake Union Park

Queen Anne

14-Minute Bike • 150+ Eateries/Shops/Bars

Northeast Queen Anne Greenbelt

East Queen Anne Playground

West Queen Anne Playfield

Kerry Park

Parsons Gardens

Kinear Park

Betty Bowen Viewpoint

Myrtle Edwards Park

Waterfront Park

Centre Court

Highly Desirable Queen Anne Location

Minutes to Major Employers, A-List Entertainment & Sporting Events, Iconic Attractions, Award-Winning Cuisine, Bars, Cafes, Breweries & Shops





Kitchen Features Include Stainless Steel Appliances in Open-Concept Layout



All Units Include a Large Master Bathroom with Full-Size Bathtubs and Large Mirrors



Living Room Features a Fireplace and a Large Sliding Door that Provide Ample Natural Light and Opens Out to Private Patio Deck

UNIT MIX

Unit Type	Unit Count	Avg. SF	Rent/Unit	Market Base Rent
2/2.00	16	1,012	\$2,884	\$3,000
3/3.00	2	1,561	\$3,900	\$3,950
Averages/Totals	18	1,073 SF	\$3,392	\$3,475

Close-In Location Provides Easy Access to Major Employers



Downtown Seattle

250,000 Jobs • 7-min

- REDFIN
- DocuSign
- Zillow
- Expedia
- NORDSTROM

Centre Court

BALLARD

Fremont

18,500+ Jobs • 15-min

- Google
- Adobe
- Tableau

Northgate

55-Acre Mixed-Use Redevelopment

ROOSEVELT

U-DISTRICT

W UNIVERSITY of WASHINGTON

48K Students / 25K Faculty • 14-min

Seattle Children's

HOSPITAL • RESEARCH • FOUNDATION

7,800 Jobs • 20-min

South Lake Union

65,000+ Jobs • 5-min

- amazon
- Google
- Meta
- Apple
- BILL & MELINDA GATES foundation
- FRED HUTCH
- UW Medicine

Bellevue

70,000+ Jobs • 24-min

Kirkland

47,000+ Jobs • 30-min

Redmond

94,000+ Jobs • 32-min

Centre Court

PNW MULTIFAMILY INVESTMENT SALES TEAM

Spencer Clark

First Vice President
+1 206 442 2764
spencer.clark@cbre.com

Peter Wright

First Vice President
+1 206 442 2735
peter.wright@cbre.com

Reed Hunter

First Vice President
+1 206 442 2713
reed.hunter@cbre.com

DEBT & STRUCTURED FINANCE

Josh Berde

Senior Vice President
+1 206 660 9456
josh.berde@cbre.com

Andrew Woertendyke

Associate Vice President
+1 605 212 0396
Andrew.Woertendyke@cbre.com

For more information, visit the website:

www.CBRE-CentreCourt.com

CBRE