

For Sale

1400 Cornwall Road, Suite 16

Oakville, Ontario



\$1,239,000

- 2,249 sq. ft. of Office space across two floors
- Lots of natural light
- Open concept design allows for flexible use as configured, or for a new owner to custom design their ideal space
- Vaulted ceilings on second level
- Each floor has its own washroom and the second level has a kitchenette
- Conveniently located in Southeast Oakville
- Close to many amenities with excellent transit access

Jonathan Leary*

Executive Vice President
905 315 3695
jonathan.leary@cbre.com

Max Lewis*

Sales Representative
905 315 3692
max.lewis@cbre.com

CBRE

1400 Cornwall Road
Suite 16
Oakville, ON

Property Details

Asking Price	\$1,239,000
Condo Maintenance Fees	\$673.14 monthly (**subject to HST)
Annual Taxes	\$11,735.96 (2023)
Total Size	2,249 sq. ft. across 2 floors
Zoning	E2 sp:165 Town of Oakville: E2 Zoning Special provision: 165



Comments

- **Beautiful office condominium complex in Southeast Oakville**
- **High level of architectural features with excellent curb appeal**
- **Ample parking**
- **High profile neighbours within the complex**
- **Conveniently located within very close proximity to numerous shops, restaurants, and other amenities**
- **Situated on the Oakville public transit bus line with direct Go Station connectivity**
- **Excellent highway access via Trafalgar Rd/ Ford Drive**

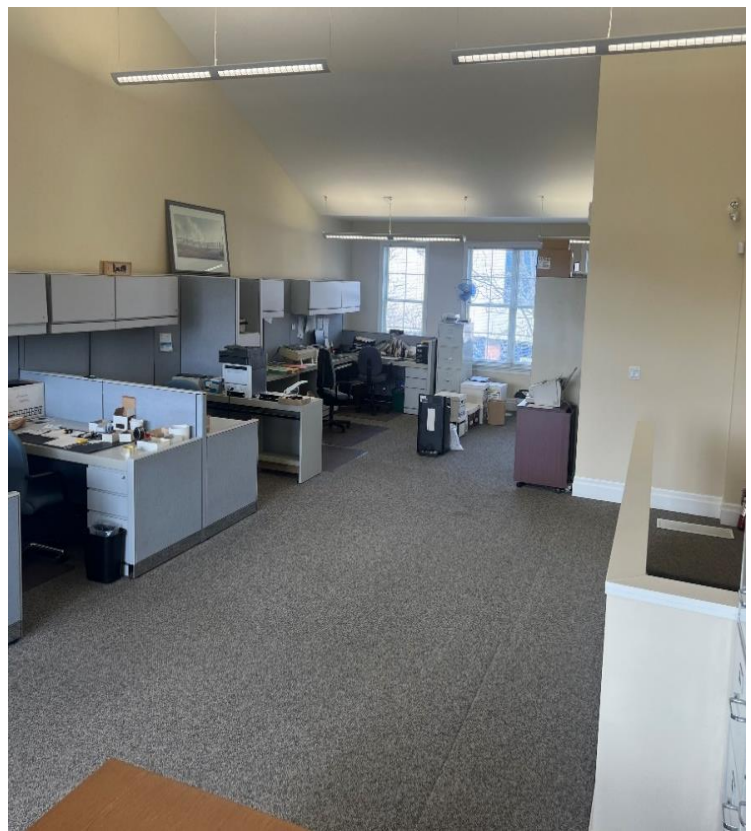
1400 Cornwall Road
Suite 16
Oakville, ON

First Floor



1400 Cornwall Road
Suite 16
Oakville, ON

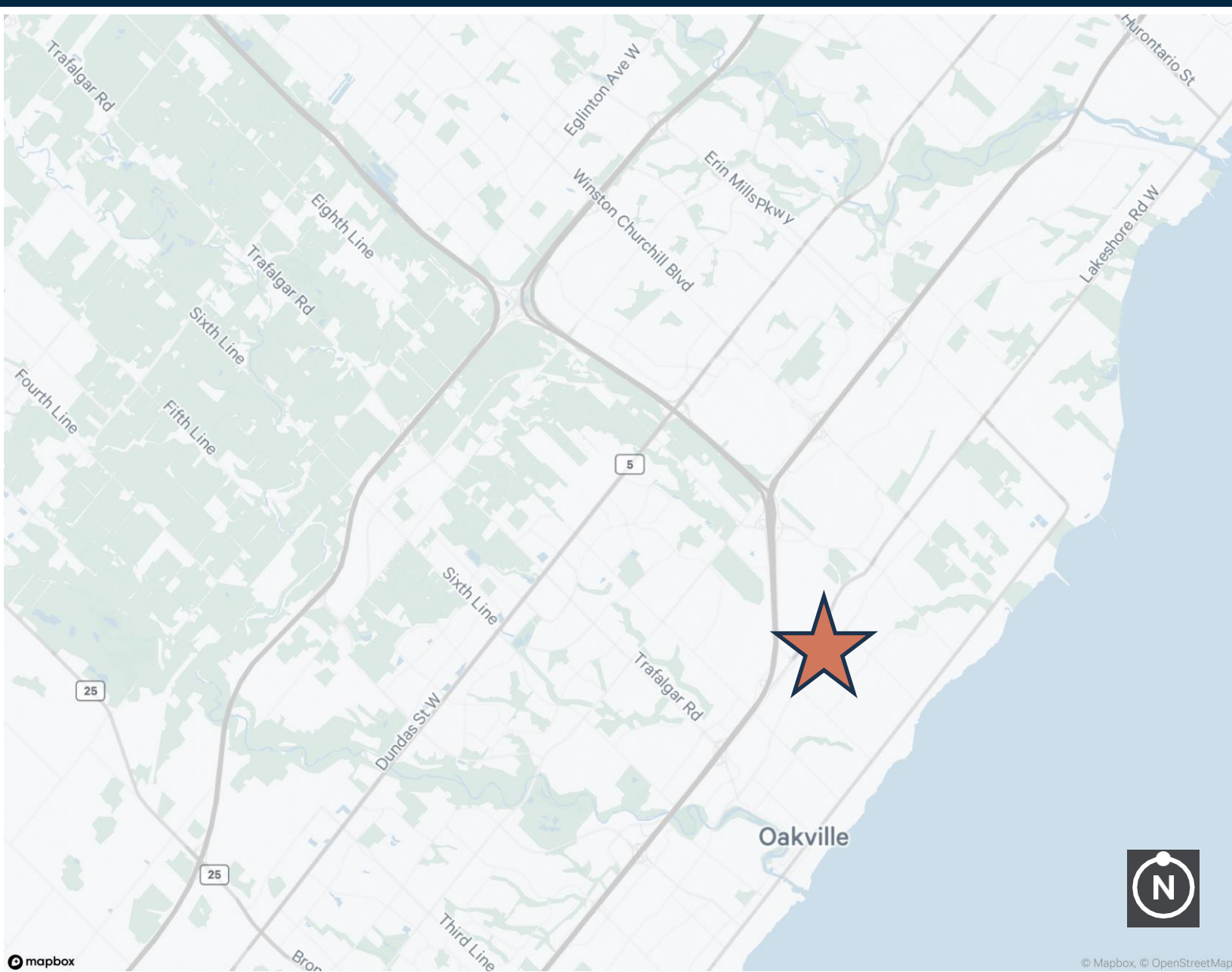
Second Floor



For Sale

1400 Cornwall Road, Suite 16

Oakville, Ontario



For More Information
Contact Us

*Sales Representative

Jonathan Leary*

Executive Vice President
905 315 3695
jonathan.leary@cbre.com

Max Lewis*

Sales Representative
905 315 3692
max.lewis@cbre.com

CBRE

CBRE Limited, Real Estate Brokerage | 5935 Airport Road, Suite 700 | Mississauga ON, L4V 1W5

This disclaimer shall apply to CBRE Limited, Real Estate Brokerage, and to all other divisions of the Corporation; to include all employees and independent contractors ("CBRE"). The information set out herein, including, without limitation, any projections, images, opinions, assumptions and estimates obtained from third parties (the "Information") has not been verified by CBRE, and CBRE does not represent, warrant or guarantee the accuracy, correctness and completeness of the Information. CBRE does not accept or assume any responsibility or liability, direct or consequential, for the Information or the recipient's reliance upon the Information. The recipient of the Information should take such steps as the recipient may deem necessary to verify the Information prior to placing any reliance upon the Information. The Information may change and any property described in the Information may be withdrawn from the market at any time without notice or obligation to the recipient from CBRE. CBRE and the CBRE logo are the service marks of CBRE Limited and/or its affiliated or related companies in other countries. All other marks displayed on this document are the property of their respective owners. All Rights Reserved. Mapping Sources: Canadian Mapping Services canadamapping@cbre.com; DMTI Spatial, Environics Analytics, Microsoft Bing, Google Earth