

# WEST DEPTFORD, NJ

1075 MANTUA PIKE

PAD SITES AVAILABLE FOR LEASE

PHILADELPHIA MSA

JOIN



Staples Great Clips

LOCATED ON BUSY ROUTE 45 (MANTUA PIKE)



get in touch.



MetroCommercial.com | PLYMOUTH MEETING, PA | MOUNT LAUREL, NJ | MIAMI, FL | PHILADELPHIA, PA

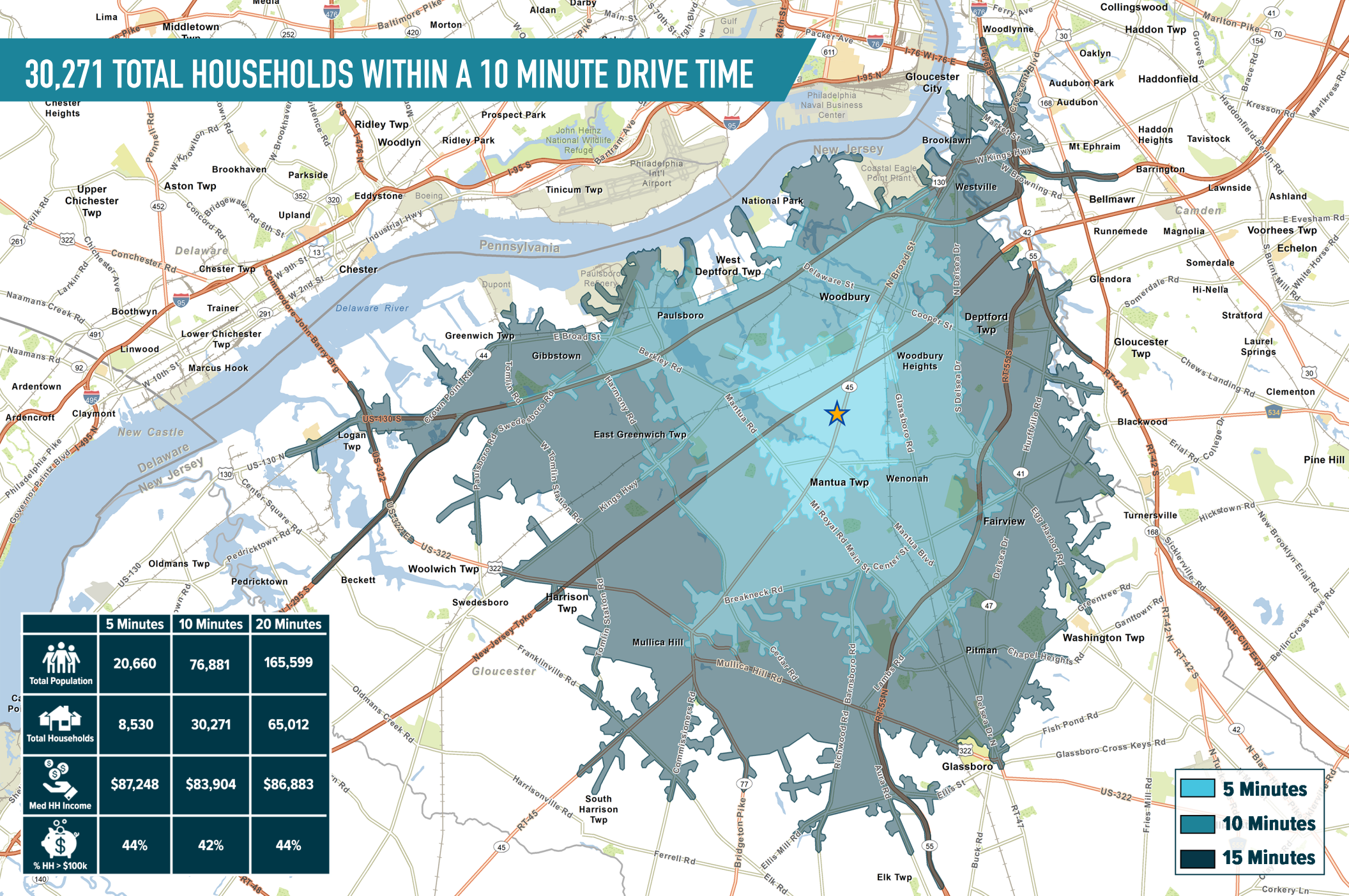
**VALERIE BARGER**

office 610.825.5222  
direct 610.260.2661  
vbarger@metrocommercial.com

**JOE DOUGHERTY**

office 610.825.5222  
direct 610.260.2670  
jdougherty@metrocommercial.com

# 30,271 TOTAL HOUSEHOLDS WITHIN A 10 MINUTE DRIVE TIME



	5 Minutes	10 Minutes	20 Minutes
Total Population	20,660	76,881	165,599
Total Households	8,530	30,271	65,012
Med HH Income	\$87,248	\$83,904	\$86,883
% HH > \$100k	44%	42%	44%

- 5 Minutes
- 10 Minutes
- 15 Minutes

The information and images contained herein are from sources deemed reliable. However, Metro Commercial Real Estate, Inc. makes no representation whatsoever as to their accuracy or authenticity. Images shown may be modified for illustrative purposes. Images may be out-of-date and not current. 11.30.23

**WEST DEPTFORD, NJ**  
1075 MANTUA PIKE



MetroCommercial.com

# NEARBY ACCESS TO NJ TURNPIKE AND ROUTE 295



The information and images contained herein are from sources deemed reliable. However, Metro Commercial Real Estate, Inc. makes no representation whatsoever as to their accuracy or authenticity. Images shown may be modified for illustrative purposes. Images may be out-of-date and not current. 11.30.23

**WEST DEPTFORD, NJ**  
 1075 MANTUA PIKE

LAST SPACE REMAINING!



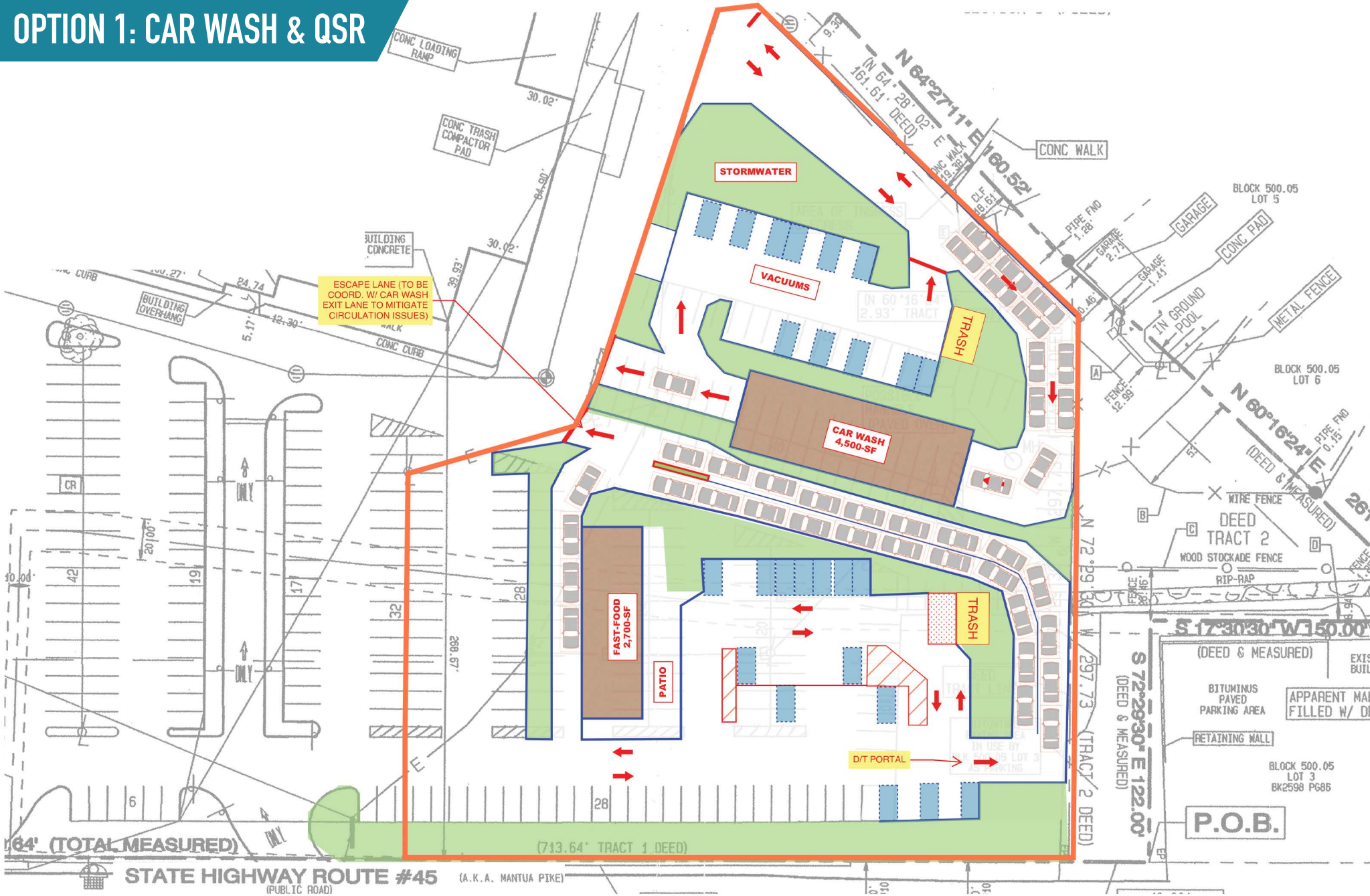
The information and images contained herein are from sources deemed reliable. However, Metro Commercial Real Estate, Inc. makes no representation whatsoever as to their accuracy or authenticity. Images shown may be modified for illustrative purposes. Images may be out-of-date and not current. 11:30:23

WEST DEPTFORD, NJ  
1075 MANTUA PIKE



MetroCommercial.com

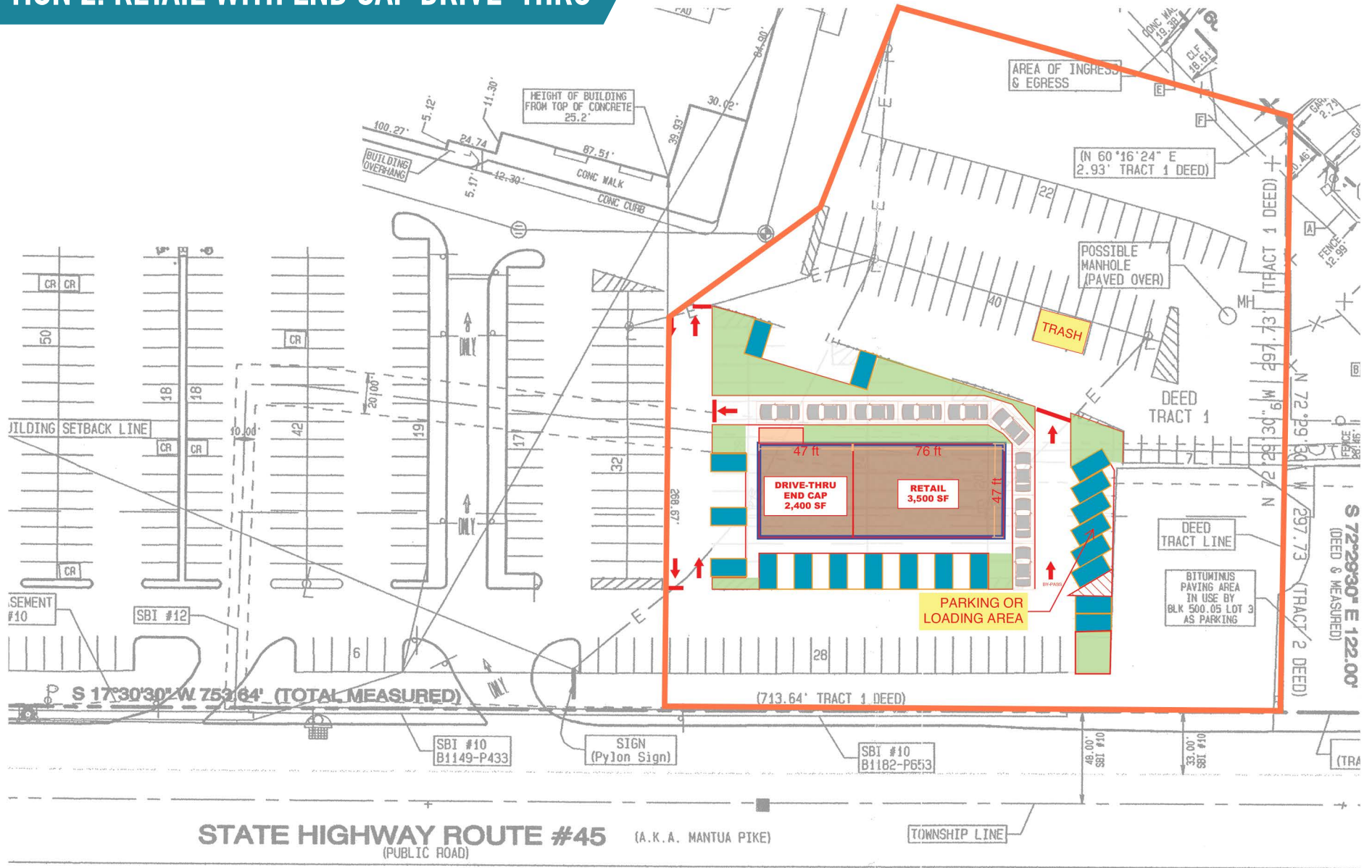
# OPTION 1: CAR WASH & QSR



ESCAPE LANE (TO BE COORD. W/ CAR WASH EXIT LANE TO MITIGATE CIRCULATION ISSUES)

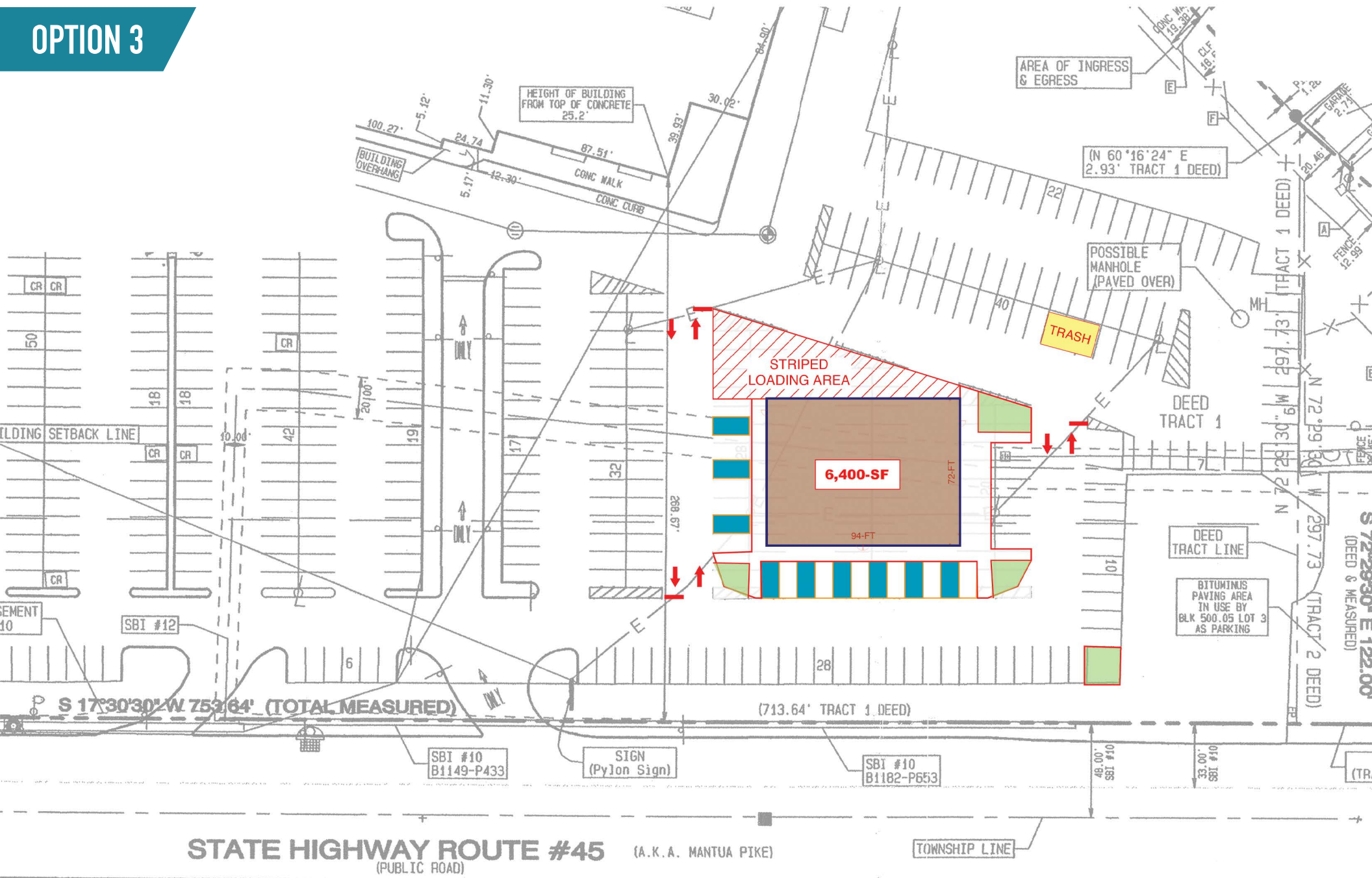
The information and images contained herein are from sources deemed reliable. However, Metro Commercial Real Estate, Inc. makes no representation whatsoever as to their accuracy or authenticity. Images shown may be modified for illustrative purposes. Images may be out-of-date and not current. 11.30.23

# OPTION 2: RETAIL WITH END CAP DRIVE-THRU



The information and images contained herein are from sources deemed reliable. However, Metro Commercial Real Estate, Inc. makes no representation whatsoever as to their accuracy or authenticity. Images shown may be modified for illustrative purposes. Images may be out-of-date and not current. 11.30.23

# OPTION 3



**STATE HIGHWAY ROUTE #45** (A.K.A. MANTUA PIKE)  
(PUBLIC ROAD)

TOWNSHIP LINE

The information and images contained herein are from sources deemed reliable. However, Metro Commercial Real Estate, Inc. makes no representation whatsoever as to their accuracy or authenticity. Images shown may be modified for illustrative purposes. Images may be out-of-date and not current. 11.30.23

**WEST DEPTFORD, NJ**  
1075 MANTUA PIKE



MetroCommercial.com