

510 CHURCH ST.

FOR SALE

2,852 SQ FT



PROPERTY DETAILS

510 S CURCH STREET | GEORGETOWN, TX 78626

510 Church Street offers a prime corner property in the heart of downtown Georgetown. Located at the corner of Church Street & East 6th Street—just a short walk to the historic Square.

The property allows a unique opportunity for the next owner to utilize this amazing location for a professional office, retail boutique, Short term rental, or permanent residence. You have the flexibility to tailor the property to your dreams.

Downtown Georgetown boasts a rich history and is strategically positioned in Williamson County, making it a hub for business activity. It's easily accessible and draws foot traffic from residents, tourists, and nearby communities.

TOTAL IMPROVEMENTS: 2,852 SQ FT

- Main Building: 2,084 SQ FT
- Detached Garage: 768 SQ FT

LOT SIZE: 0.36 AC OR 15,692 SQ FT

- Large Corner Lot
- Approx. 250' of roadway frontage

ASKING PRICE: \$975,000

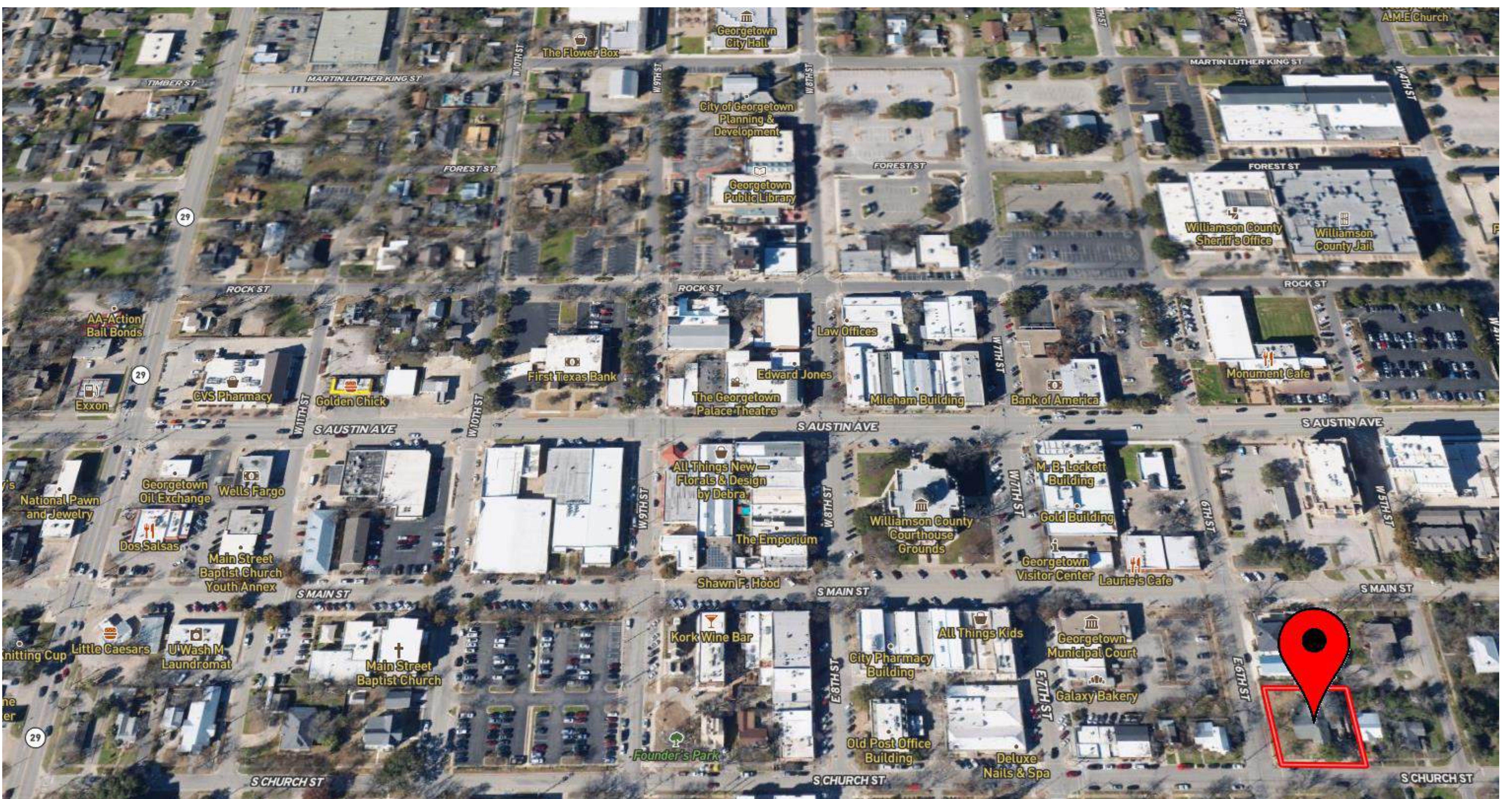
Northeast corner of South Church Street & East 6th Street

Mason Turner | Broker | 512.930.2800 | mason@turnerprop.com

510 CHURCH ST.

FOR SALE

2,852 SQ FT



Mason Turner | Broker | 512.930.2800 | mason@turnerprop.com

This property is being offered for sale or lease in its "AS IS, WHERE IS" condition. The Broker is submitting the attached information in its capacity as a representative of the owner. The material contained herein was obtained from sources deemed reliable. Turner Commercial Properties makes no warranty, express or implied, as to the accuracy of the information contained herein. All presented information submitted is subject to change without notice as regards price, terms or availability. Nothing contained herein should be relied upon as a promise or representation as to the future. Recipients should conduct their own investigation and analysis of the transaction described herein.

510 CHURCH ST.

FOR SALE

2,852 SQ FT



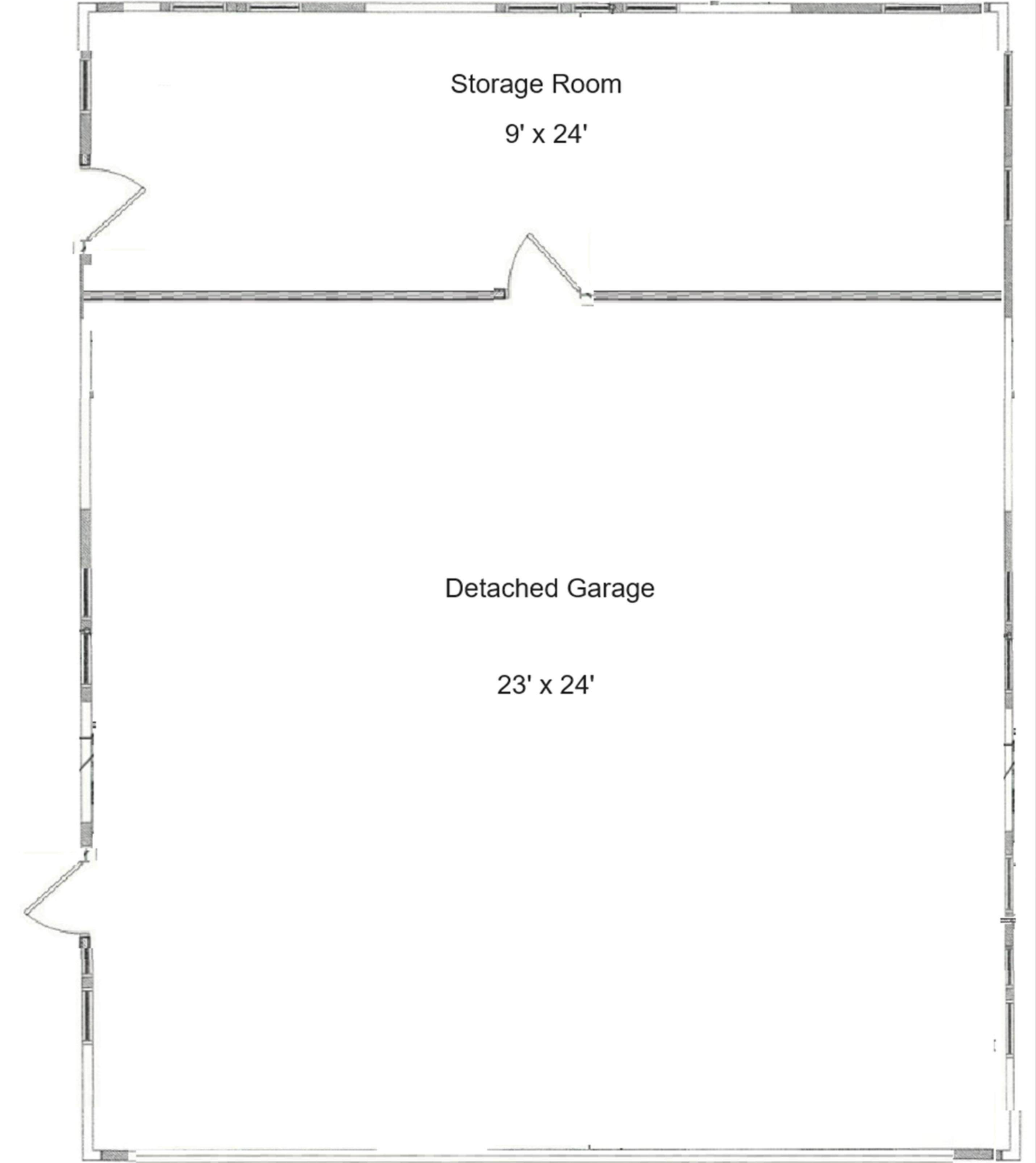
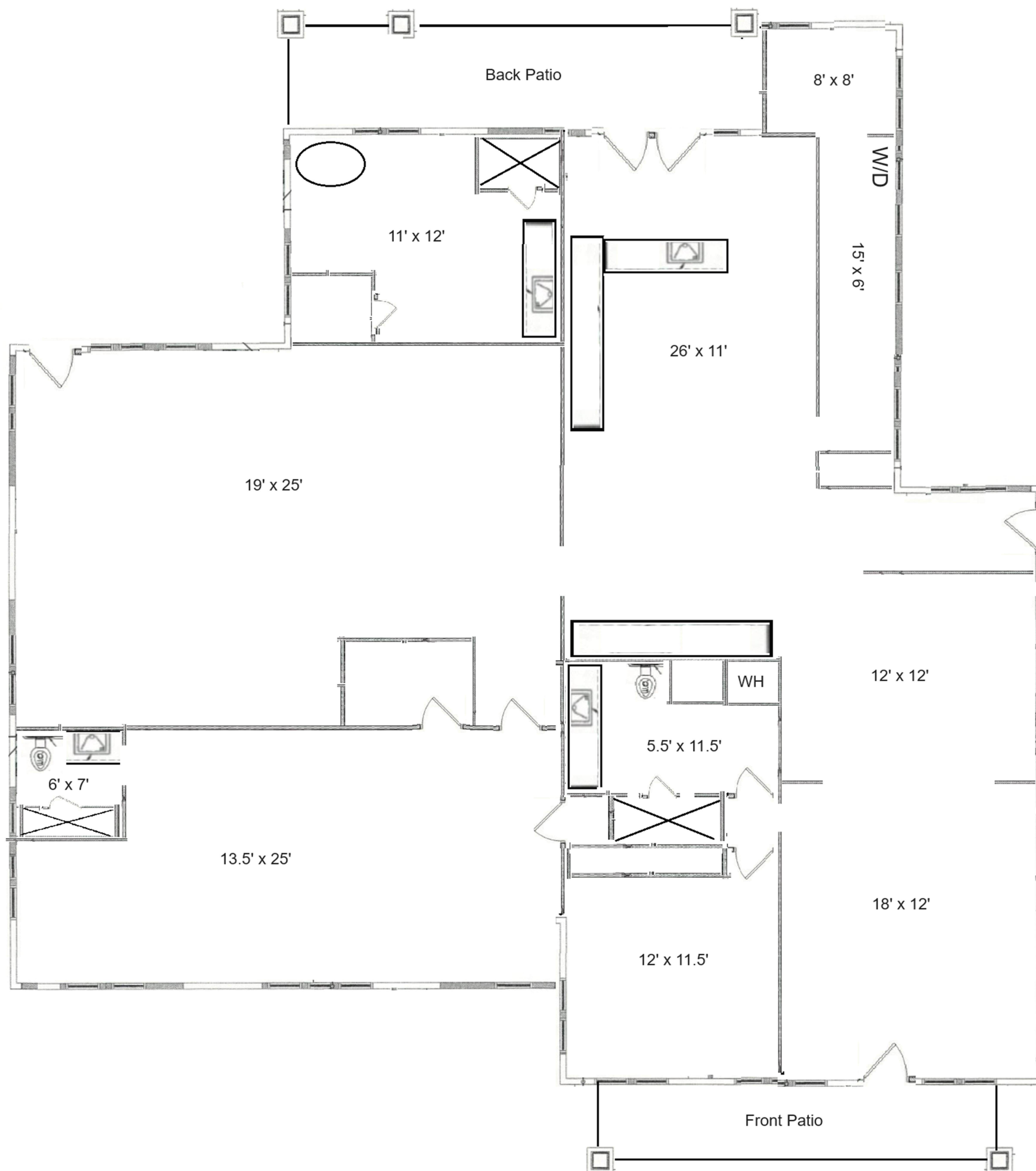
Mason Turner | Broker | 512.930.2800 | mason@turnerprop.com

This property is being offered for sale or lease in its "AS IS, WHERE IS" condition. The Broker is submitting the attached information in its capacity as a representative of the owner. The material contained herein was obtained from sources deemed reliable. Turner Commercial Properties makes no warranty, express or implied, as to the accuracy of the information contained herein. All presented information submitted is subject to change without notice as regards price, terms or availability. Nothing contained herein should be relied upon as a promise or representation as to the future. Recipients should conduct their own investigation and analysis of the transaction described herein.

510 CHURCH ST.

FOR SALE

2,852 SQ FT

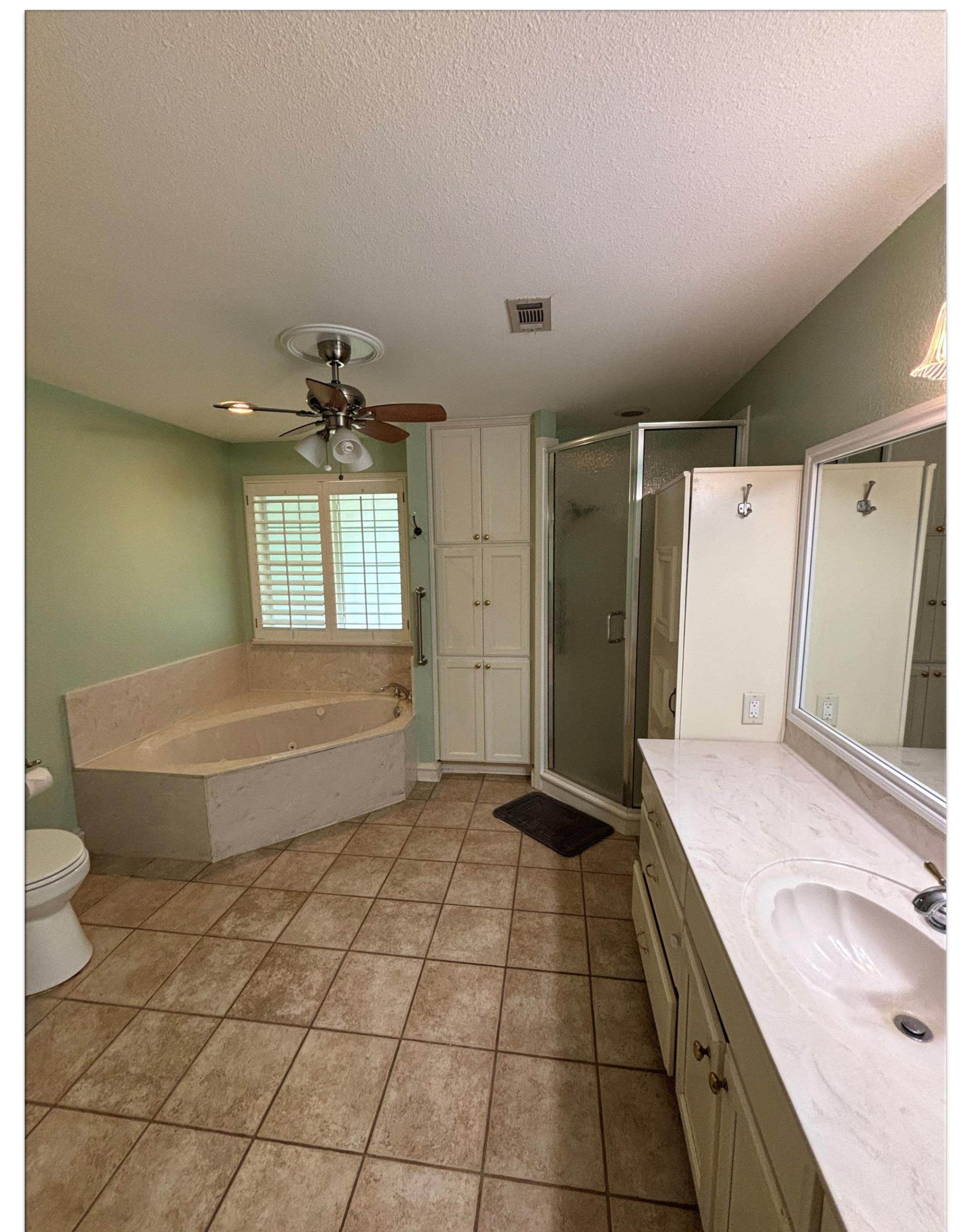


*Measurements are approximate

Mason Turner | Broker | 512.930.2800 | mason@turnerprop.com

TURNER COMMERCIAL

PROPERTIES



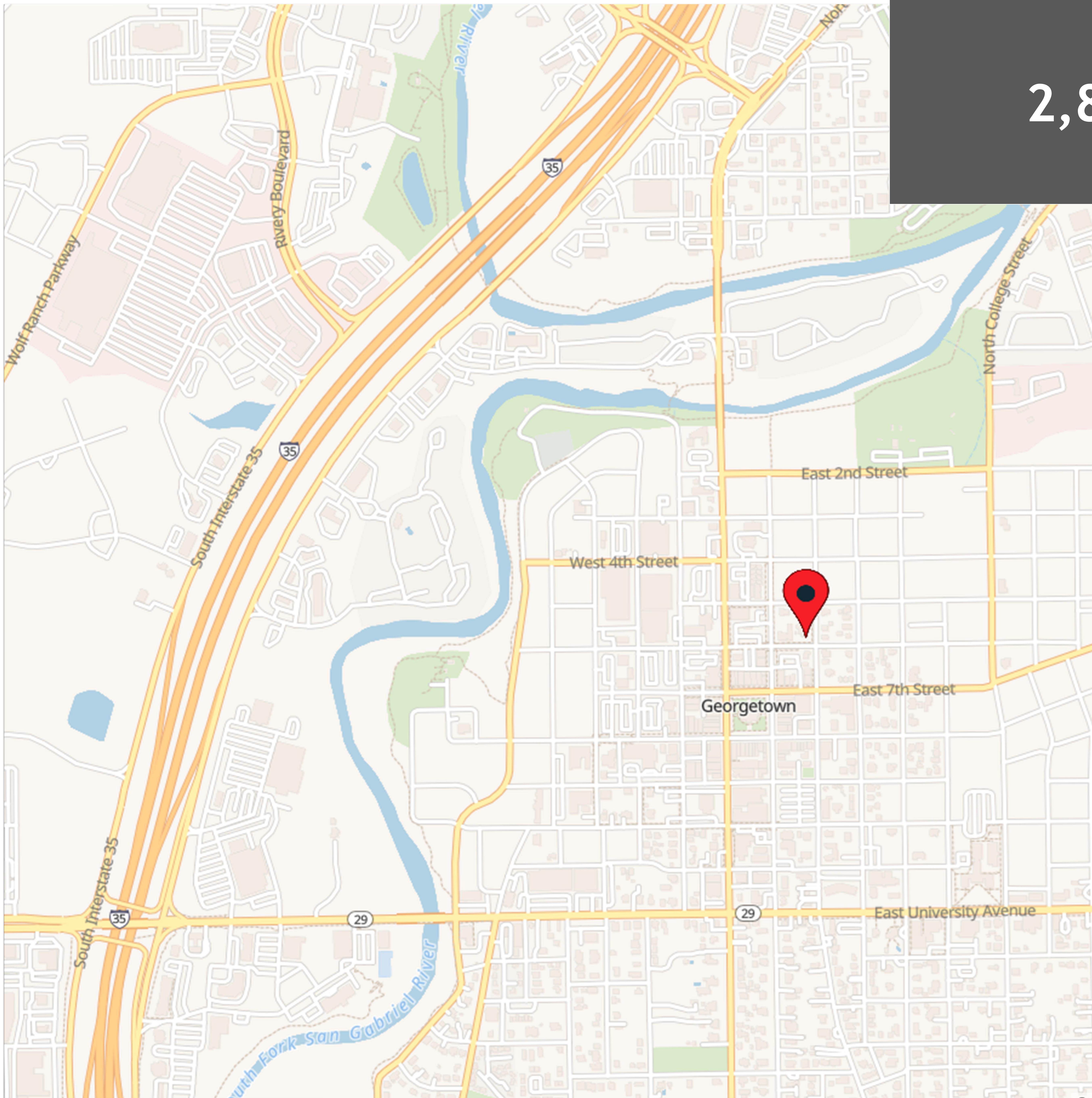
Mason Turner | Broker | 512.930.2800 | mason@turnerprop.com

This property is being offered for sale or lease in its "AS IS, WHERE IS" condition. The Broker is submitting the attached information in its capacity as a representative of the owner. The material contained herein was obtained from sources deemed reliable. Turner Commercial Properties makes no warranty, express or implied, as to the accuracy of the information contained herein. All presented information submitted is subject to change without notice as regards price, terms or availability. Nothing contained herein should be relied upon as a promise or representation as to the future. Recipients should conduct their own investigation and analysis of the transaction described herein.

510 CHURCH ST.

FOR SALE

2,852 SQ FT



Northwest corner of South Church Street & East 6th Street
Approx. 185 yard northeast of the Georgetown Square
2 blocks west of Austin Avenue
Approx. 1 ¼ miles west of IH-35

28 miles to Downtown Austin
35 miles to ABIA

Mason Turner | Broker | 512.630.9673 | mason@turnerprop.com

