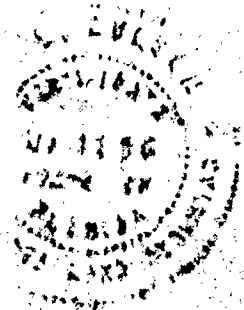
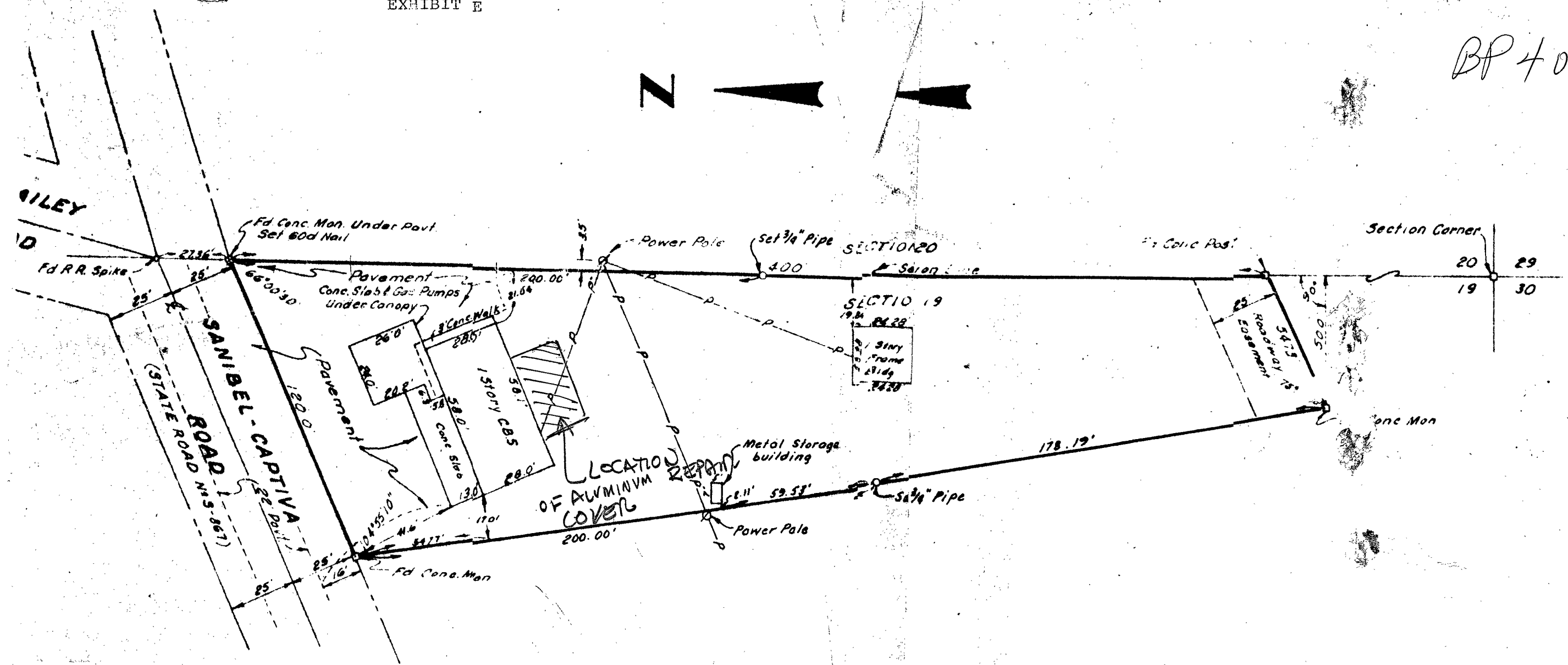


BP 4083



CERTIFICATE

I hereby certify that this plat is a true and correct representation of the recent survey made and platted under my direction.

Lester L. Nelson
Lester L. Nelson
 Professional Land Surveyor
 Florida Certificate No. 1965

NOTE: Improvements other than those shown are not located.

Revised thru Jan. 26, 1982

Approved
Robert D. Toomey
 11/2/83

SURVEY PLAT
 PARCEL IN E₂ OF SW₄ E_{1/2} of SE_{1/4}
 SECTION 19, T. 46 S., R. 23 E. T. 46 S., R. 23 E.
 SANIBEL ISLAND, LEE COUNTY, FLORIDA

JOHNSON ENGINEERING, INC.			
CIVIL ENGINEERS		LAND SURVEYORS	
FORT MYERS			
DATE	PROJECT NO.	PLAT NO.	SCALE
March 1975	11232	19-46-23	1"=40'

Toomey

19-46-23