

CLASS-A MEDICAL SPACE | VESTAVIA HILLS

THE C&M Building | 2871 Acton Road | Vestavia Hills, AL | 35243

LEASE RATE: \$24.50^{/SF} | FULL SERVICE

AVAILABLE SPACE: Suite 100: 7,628 SF

DETAILS

- Fully built-out medical space
- Controlled access
- Easy access to both I-459 & Hwy 280
- Property located at signalized intersection of Acton Road and Caldwell Mill Road
- Located in the City of Vestavia Hills; no occupational tax



EXCLUSIVELY OFFERED BY
MATT GILCHRIST, SIOR
mattg@grahamcompany.com

SAM CARROLL, SIOR
samc@grahamcompany.com

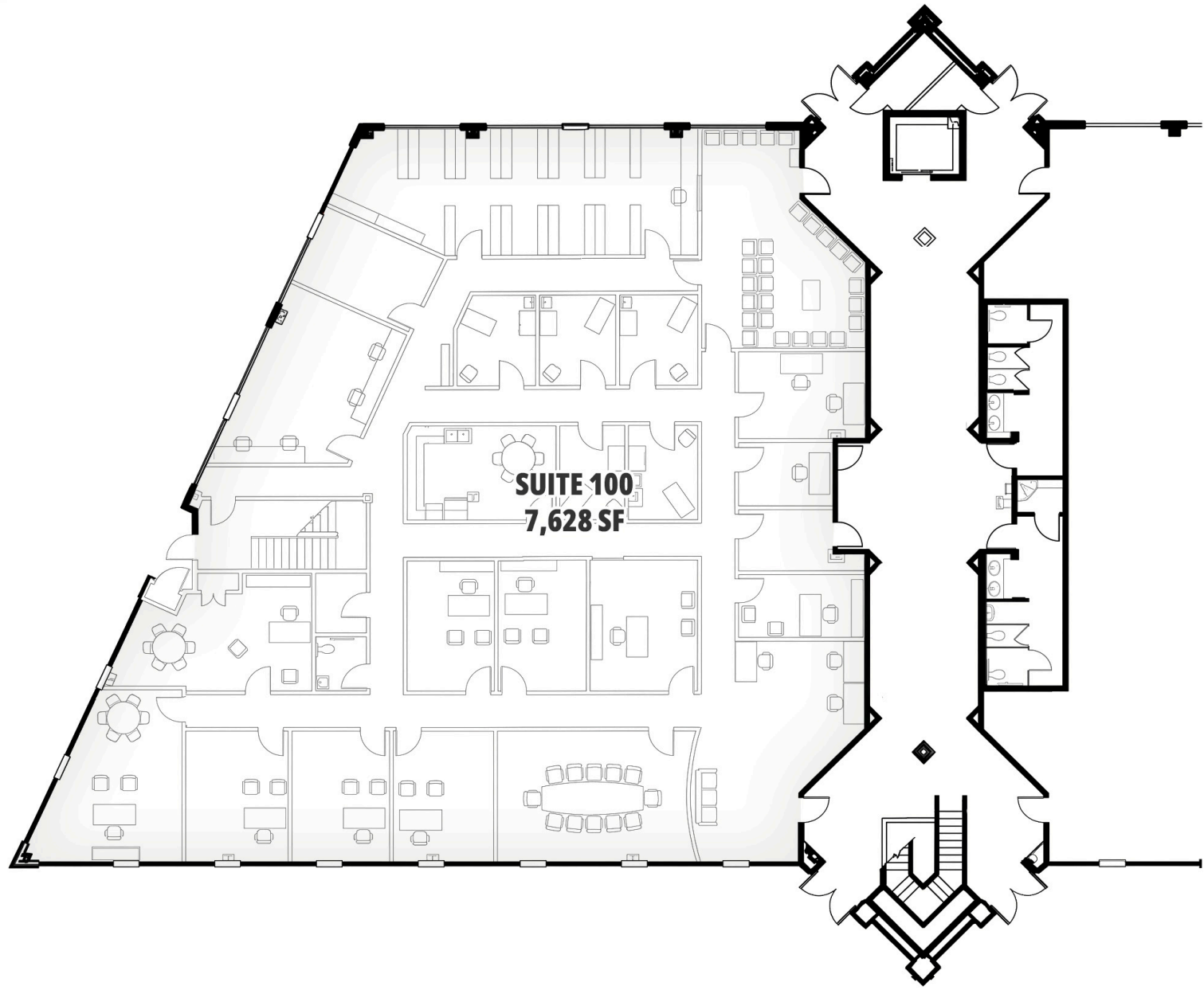
Information deemed reliable but not guaranteed

GrahamCompany.com | **205-871-7100**

CLASS-A MEDICAL SPACE | VESTAVIA HILLS

THE C&M Building | 2871 Acton Road | Vestavia Hills, AL | 35243

LEASE RATE: \$24.50/SF | FULL SERVICE



EXCLUSIVELY OFFERED BY
MATT GILCHRIST, SIOR
mattg@grahamcompany.com

SAM CARROLL, SIOR
samc@grahamcompany.com

Information deemed reliable but not guaranteed

GrahamCompany.com | **205-871-7100**