

FOR LEASE

±5,224 SF Medical / Office Building
505 Sir Francis Drake Blvd | Greenbrae, CA



www.505SFD.com

ADT Count: ±46,676 Vehicles | Excellent Visibility & Access from Sir Francis Drake Blvd

Laura Duffy

Vice President

+1 415 686 0255

laura.duffy@jll.com

CA RE License #01922792

Jordan Lazor

Vice President

+1 415 595 5102

jordan.lazor@jll.com

CA RE License #0201117



Jones Lang LaSalle Brokerage, Inc.
RE License #01856260

Property Highlights



Interior is in shell condition and ready for tenant improvements

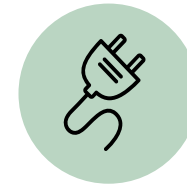
New HVAC, roof coating, and bathroom cores on both floors



±5,224 SF standalone
medical/office building
on ±0.31 AC lot



Abundant parking,
18 on-site stalls
(1 ADA)



350 amp
power supply



Building is fully
sprinklered



Convenient access
to Highway 101 &
I-580



Zoning: C2
(Commercial)



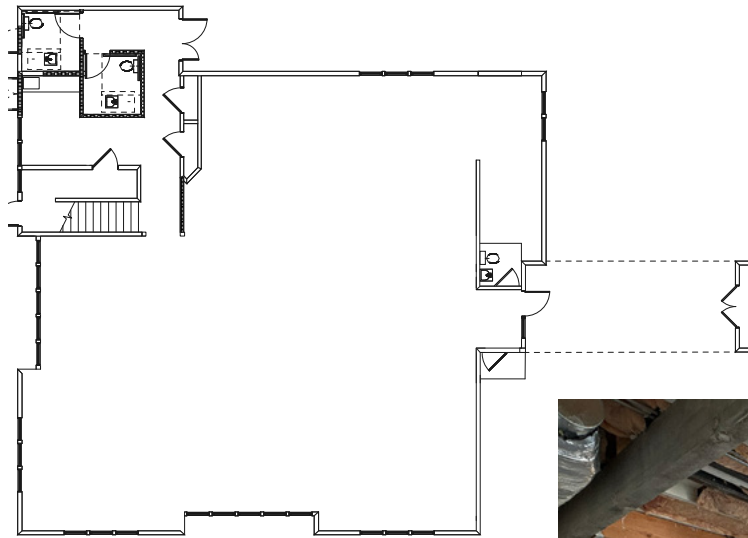
Excellent visibility &
signage opportunities
ADT count: ±46,676
vehicles



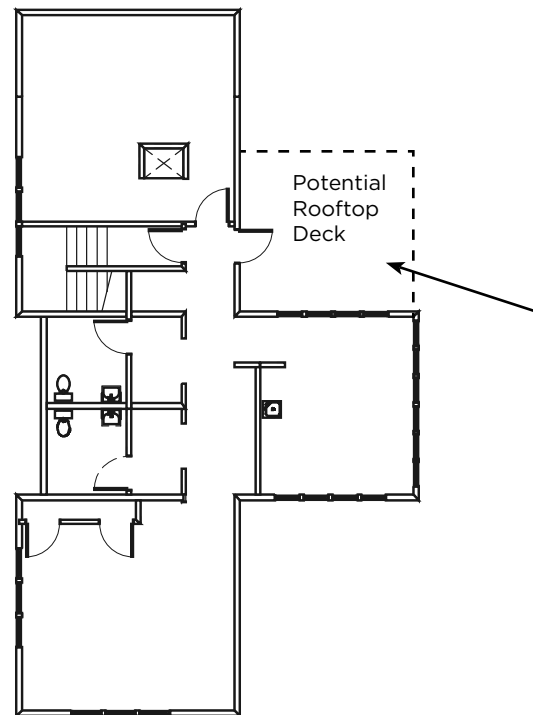
Close proximity to
SMART Station &
Ferry Terminal

Floor Plan

1st Floor



2nd Floor

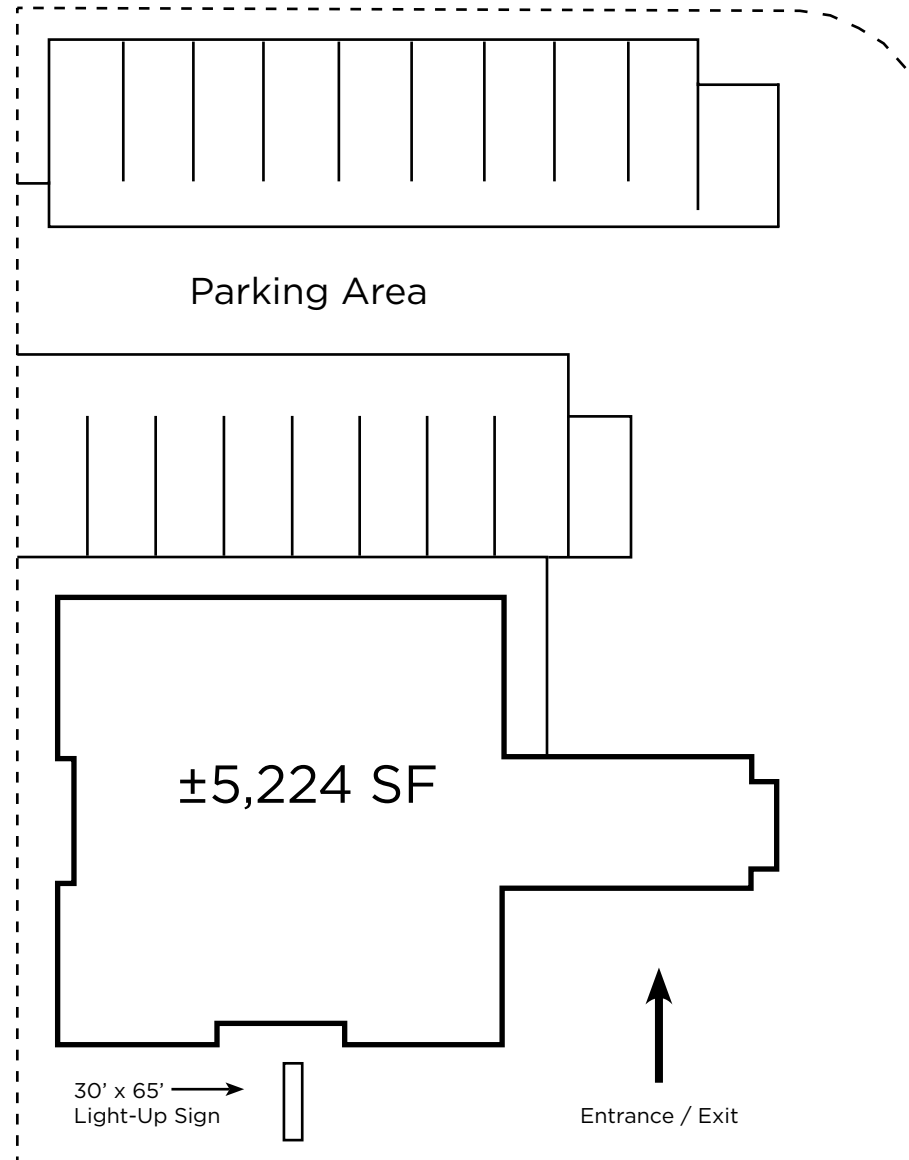


Total: ±5,224 SF

Want to Envision What Your Medical Space Can Look Like?

Check out this [Conceptual 3D Floor Plan Visualization!](#)

Site Plan



Location Map

Strategically located on **Sir Francis Drake Boulevard**, this property offers premier access to Highway 101 and Interstate 580, with the Larkspur Ferry Terminal, SMART train station, and Marin Airpoter all just moments away. Directly adjacent, the Bon Air Shopping Center provides a wealth of convenient shopping, dining, and fitness amenities. This prime location is further enhanced by its proximity to top-tier healthcare at MarinHealth Medical Center, highly-regarded schools, and abundant recreational opportunities at nearby parks and Mount Tamalpais.



Leasing Team

For more information,
please contact:

Laura Duffy
Vice President
+1 415 686 0255
laura.duffy@jll.com
CA RE License #01922792

Jordan Lazor
Vice President
+1 415 595 5102
jordan.lazor@jll.com
CA RE License #02011117

