



WOODCREST
CAPITAL, LLC

Santa Fe Shopping Center

1808-1812 Santa Fe Dr | Weatherford TX

LEASING
(817) 927-0050

Restaurant
Retail
Office
Medical

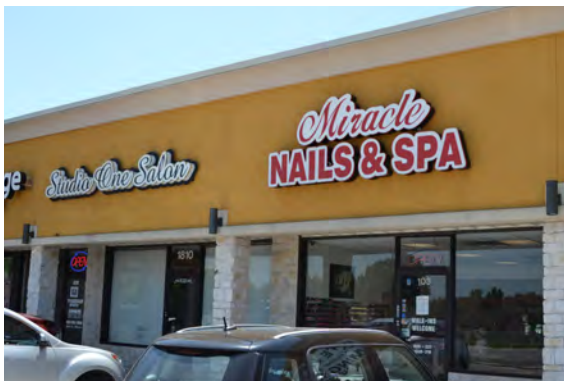
AVAILABLE
Retail: 780 SF
Flex/Warehouse:
800 SF



- 9,660 SF Center
- Parker County, Texas
- Excellent Visibility & Access
- 1 Mile from Weatherford College
- ½ Mile from I-20

Type	PSF
NNN's	\$ 7.16
Lease Rates	Call for Rates

Traffic Counts	
I-20	82,923 VPD
Santa Fe Dr	18,741 VPD



Demographics	1-mile*	3-mile	5-mile	True Trade Area**
Population	3,018	22,705	33,137	627,883
Households	1,435	8,988	12,751	231,441
Average HH Income	\$69,984	\$85,076	\$88,242	\$92,102

* 1, 3, and 5 mile radius data provided by Placer.ai using the STI: PopStat 2022 dataset

** True Trade Area values reflect the aggregate demographic data of the most prevalent Census Block Groups providing 80% of the actual traffic seen at the center from 3/1/2022-2/28/2023 as calculated by Placer.ai using the STI: PopStats 2022 dataset.

Woodcrest Capital, LLC
3113 South University Drive, Suite 600
Fort Worth, TX 76109

The information contained herein has been given to us by the owner of the property or other sources we deem reliable. We have no reason to doubt its accuracy, but we do not guarantee it. All information should be verified prior to purchase or lease.

(817) 927-0050 | woodcrestcapital.com

Santa Fe Shopping Center

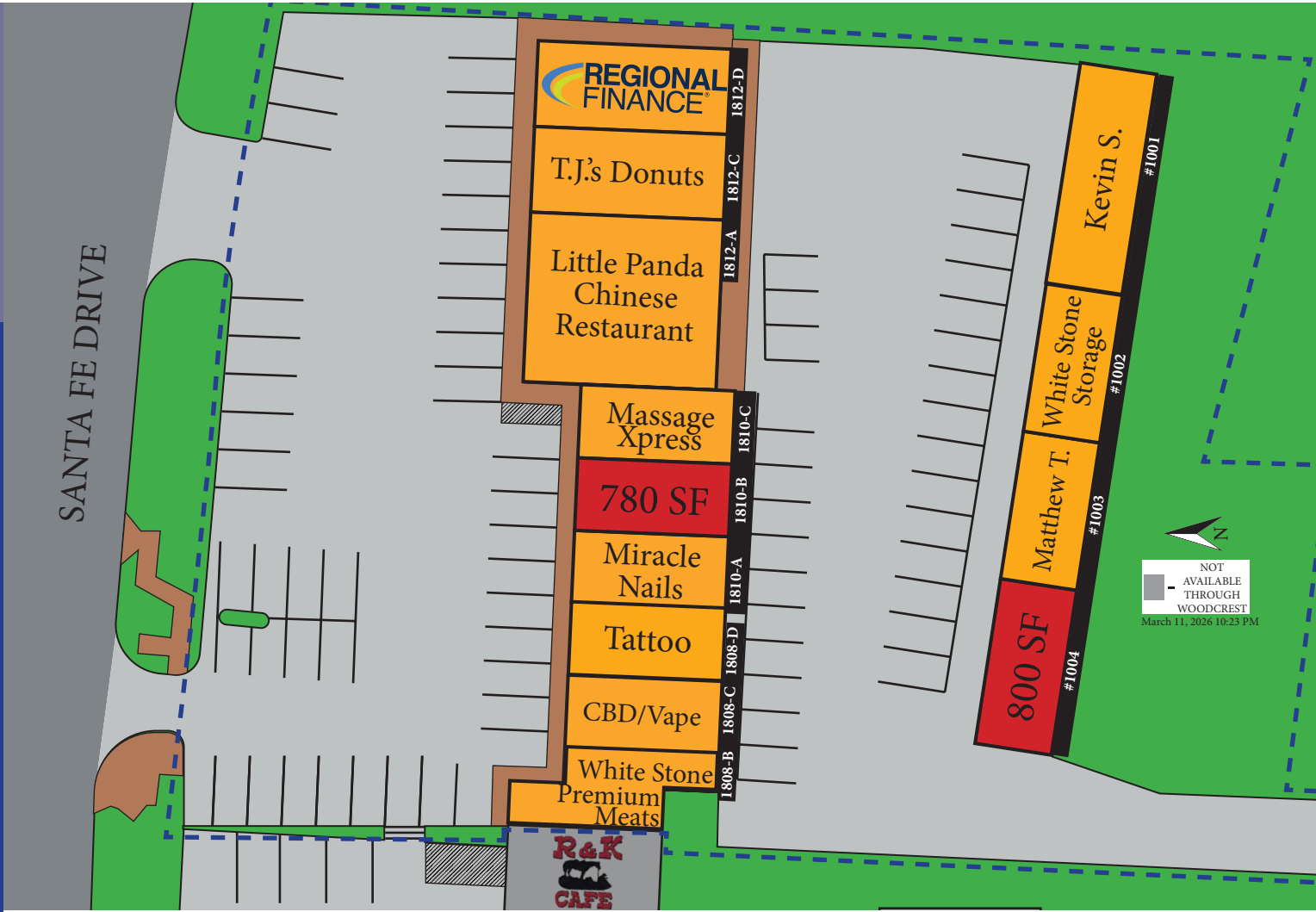
1808-1812 Santa Fe Dr | Weatherford TX

Woodcrest Capital, LLC

3113 South University Drive, Suite 600

Fort Worth, TX 76109

SANTA FE SHOPPING CENTER | Weatherford, Texas



Traffic data by Placer.ai 2021 dataset. Map locations approximate

(817) 927-0050 | woodcrestcapital.com