

LAND AVAILABLE

VULCAN DRIVE

ERLANGER, KY 41014

ZONING: INDUSTRIAL PARK

17 ACRES



PROPERTY HIGHLIGHTS

- Join L'OREAL USA, Regal Power Transmission Solutions, and Graham Packaging
- Rail access
- Utilities at the site

IDEAL USES

- Distribution
- Assembly
- Manufacturing
- Fulfillment
- Packaging

Bert Hehman
Associate Director of Sales & Leasing
859.630.4196
bhehman@corporex.com

Brian O'Toole
Senior Associate Leasing
859.292.5511
botoole@corporex.com

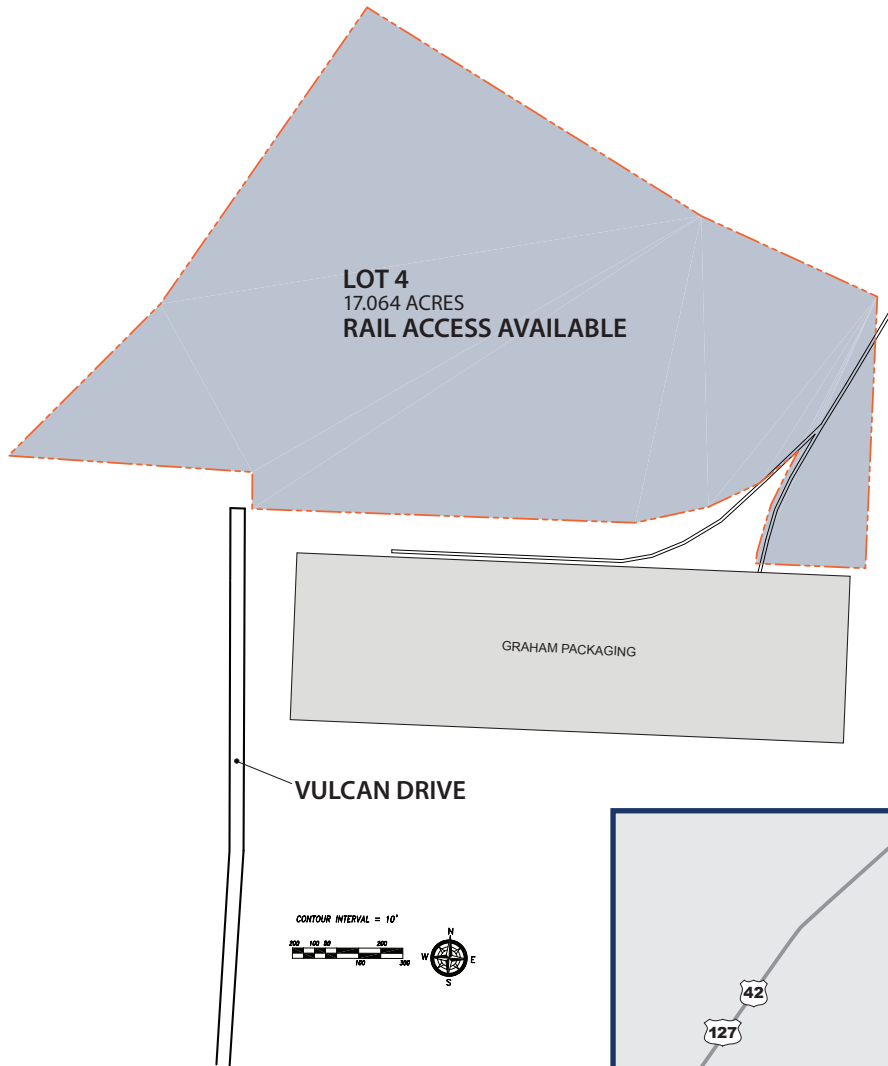
Wilson Huber
Office Leasing Sales Associate
859.292.5585
whuber@corporex.com

Corporex
corporex.com

LAND AVAILABLE

VULCAN DRIVE

ERLANGER, KY 41014



Bert Hehman
Associate Director of Sales & Leasing
859.630.4196
bhehman@corporex.com

Brian O'Toole
Senior Associate Leasing
859.292.5511
botoole@corporex.com

Wilson Huber
Office Leasing Sales Associate
859.292.5585
whuber@corporex.com

Corporex
corporex.com