

The Colliers logo is a blue rectangle with the word "Colliers" in white serif font, with a yellow and red horizontal bar below it.

For sale or lease

1300 W 6th Street, Little Rock, AR

For Sale or Lease: Single-Tenant Office Building Near Capitol

Features:

- Building size: approximately 6,600 SF
- Lot size: 0.41 acres
- **Reduced lease rate: \$13.00/SF, MG**
- **Reduced sale price: \$900,000**
- Street parking and private parking lot
- Walking distance from Arkansas State Capitol building
- Landlord pays taxes, insurance, and structural maintenance
- Tenant pays janitorial, utilities, and interior maintenance

Copyright © 2024 Colliers International. Information herein has been obtained from sources deemed reliable, however its accuracy cannot be guaranteed. The user is required to conduct their own due diligence and verification.

Lease rate:

\$13.00
SF MG

Sale price:

\$900K

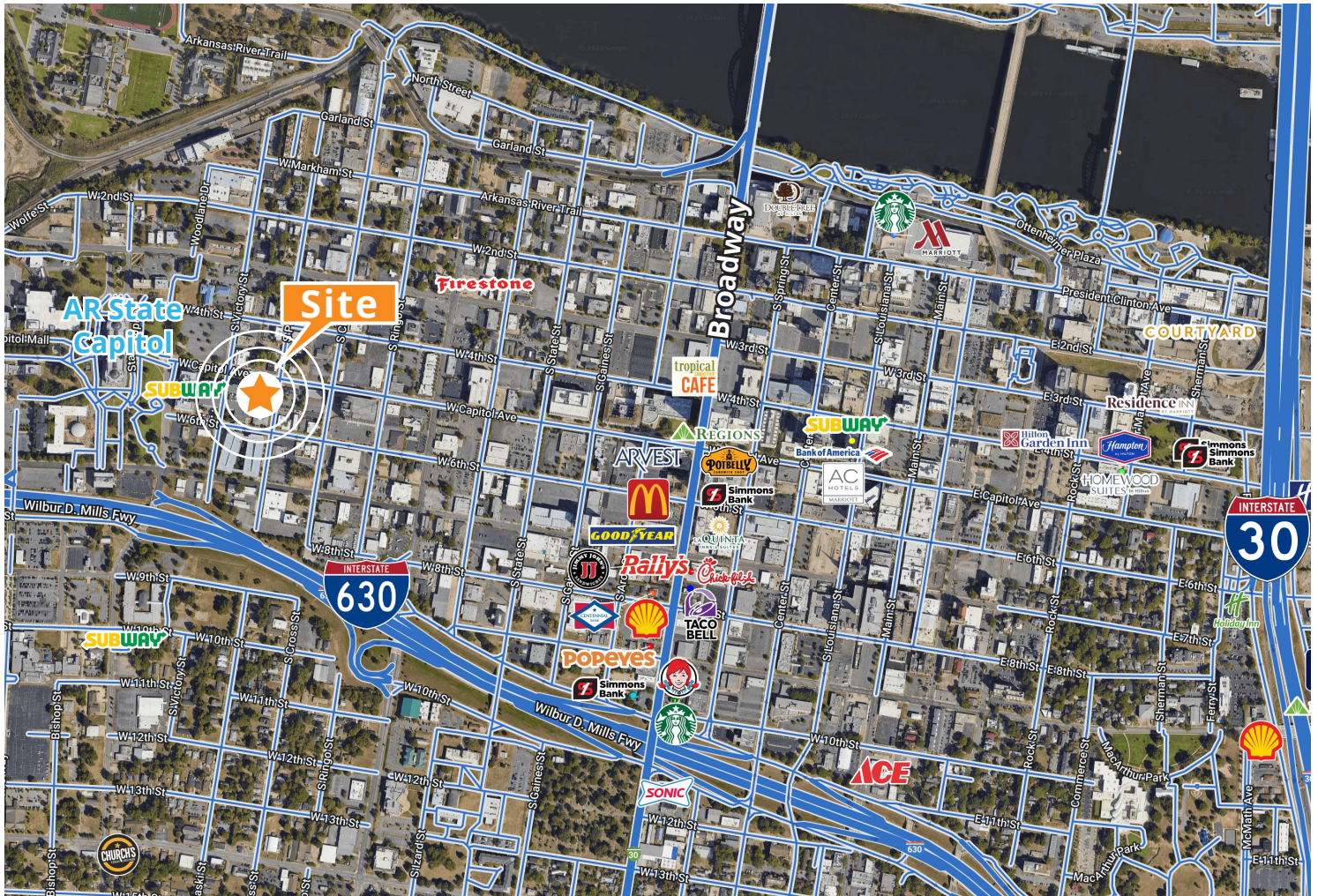
Contact us:

Justin Bentley, CCIM, SIOR
+1 501 850 0739
justin.bentley@colliers.com

Mark Bentley, SIOR
+1 501 850 0734
mark.bentley@colliers.com

Colliers | Arkansas
1 Allied Drive, Suite 1500
Little Rock, AR 72202
P: +1 501 372 6161
F: +1 501 372 0671

Neighborhood Map



Area Demographics

	1 Mile	3 Mile	5 Mile
Est. Population	5,498	54,196	124,982
Est. Households	2,615	25,248	57,076
Est. Average Household Income	\$89,827	\$74,347	\$81,606

Contact us:

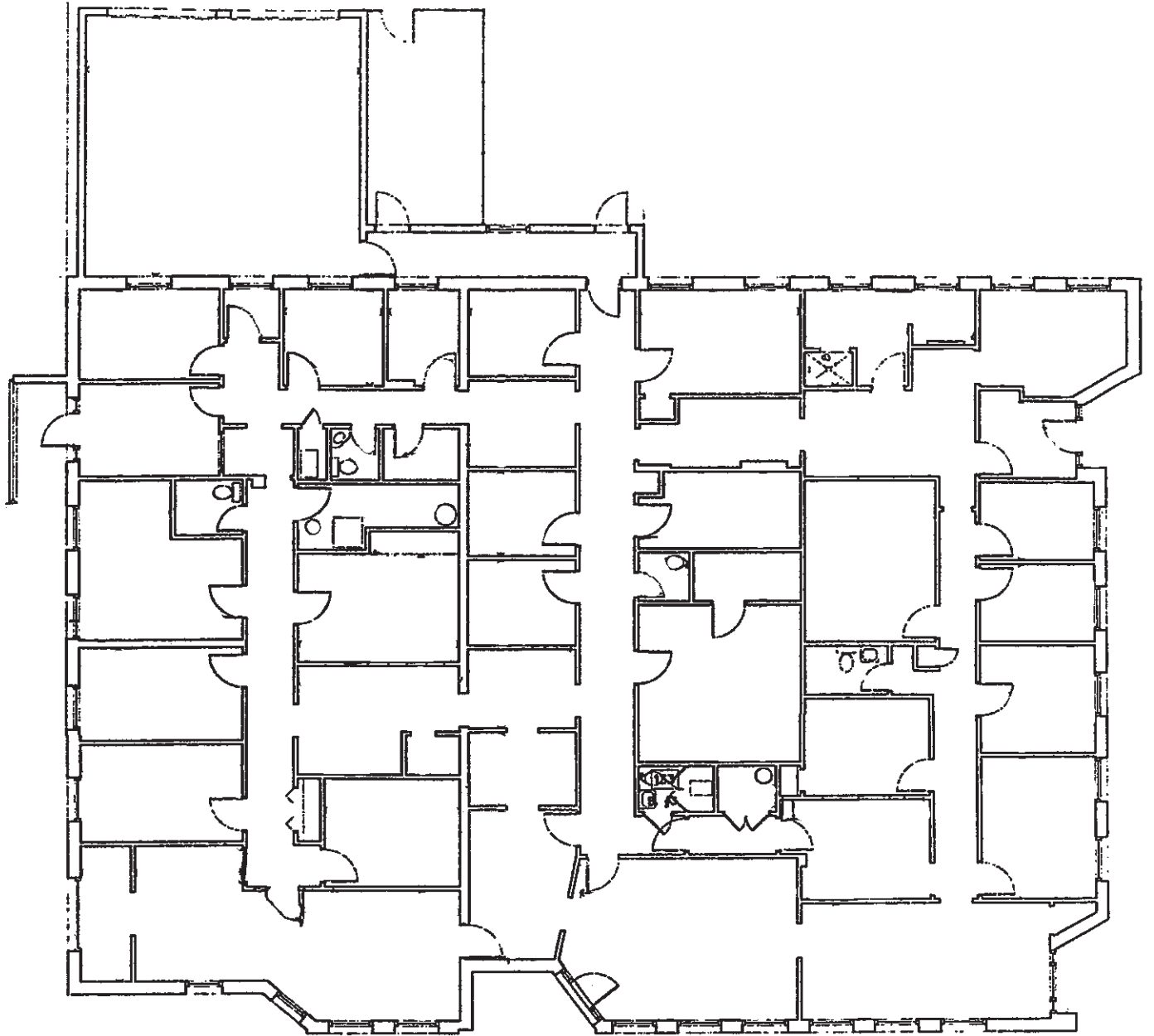
Justin Bentley, CCIM, SIOR
 +1 501 850 0739
justin.bentley@colliers.com

Mark Bentley, SIOR
 +1 501 850 0734
mark.bentley@colliers.com

Colliers | AR

1 Allied Drive, Suite 1500
 Little Rock, AR 72202
 P: +1 501 372 6161
 F: +1 501 372 0671

Floor Plan



Contact us:

Mark Bentley, SIOR
+1 501 850 0734
mark.bentley@colliers.com

Justin Bentley, CCIM, SIOR
+1 501 850 0739
justin.bentley@colliers.com

Colliers | AR

1 Allied Drive, Suite 1500
Little Rock, AR 72202
P: +1 501 372 6161
F: +1 501 372 0671