

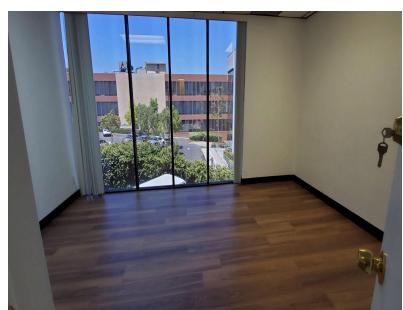
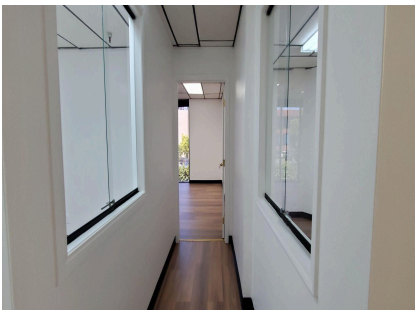
THE BETA BUILDING

2801 Camino Del Rio South, San Diego, CA. 92108



Suite # 207 1182sq 5 OFFICES AND OPEN SPACE. SMART LAYOUT. FOR LEASE BY OWNER.

This office is located in the stylish Beta Building, 2801 Camino Del Rio South in the heart of Mission Valley. Central to all of San Diego County. The office layout consists of a reception area, 3 good sized private offices and 2 large offices with floor to ceiling windows. This is a smart lay-out for any business. Lobbies have chandeliers, ornate furnishings and interior landscaping. Not stale commercial office space. There is a conference room and kitchen available to our tenants right down the hall. 24 hour access. Commercial use only. On-site management and security. To view additional pictures of the building please visit our website, www.beta2667.com. To see the suite please call Christine (619)571-4070. \$1.85 per square + utilities. Excellent value for this area.



Christine (619) 571-4070

Ashley (619)709-1565

