

# OFFICE SPACE FOR LEASE



## MAITLAND GREEN II

2290 Lucien Way  
Maitland, FL 32751

Maitland Green II is a 4-story Class A office building with approximately 84,000 RSF and 2,130 RSF of available space.

Located in the highly desirable Maitland Center Office Park, this corporate building provides efficient office suites for all professional businesses.

[Virtual Tour](#)

[Drone Video](#)

**CLASS A  
OFFICE SPACE**

**Space Available  
2,130 RSF**



For more information, contact:  
**Damien Madsen**  
(407) 256.2844  
DMadsen@harbertrealty.com

For more information, contact:  
**Josh Smith**  
(407) 377.4050  
JSmith@harbertrealty.com

Property Owned &  
Operated by:



## SPACE AVAILABLE

Suite	RSF
210	2,130



## BUILDING FEATURES & AMENITIES

- ▶ 84,000 RSF Class A 4-Story Building
- ▶ On-Site Institutional Property Management
- ▶ 4/1000 Parking Ratio
- ▶ Brand New Fitness Facility Located in Adjacent Building
- ▶ **New Building Feature: Advanced and Targeted Cleanings of Common Area Spaces**
- ▶ Large Centrally Located Courtyard for Collaborative Distancing Area



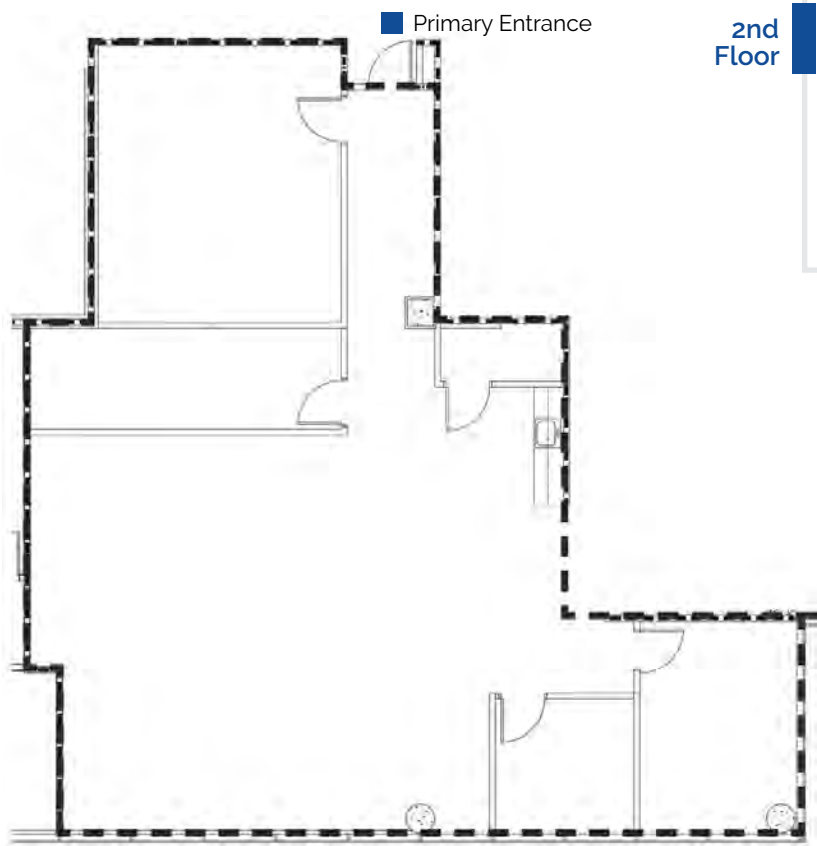
For more information, contact:

**Damien Madsen**  
 (407) 256.2844  
 DMadsen@harbertrealty.com

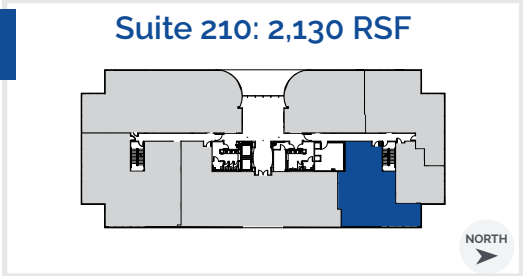
**Josh Smith**  
 (407) 377.4050  
 JSmith@harbertrealty.com

Property Owned &  
 Operated by:





2nd  
Floor

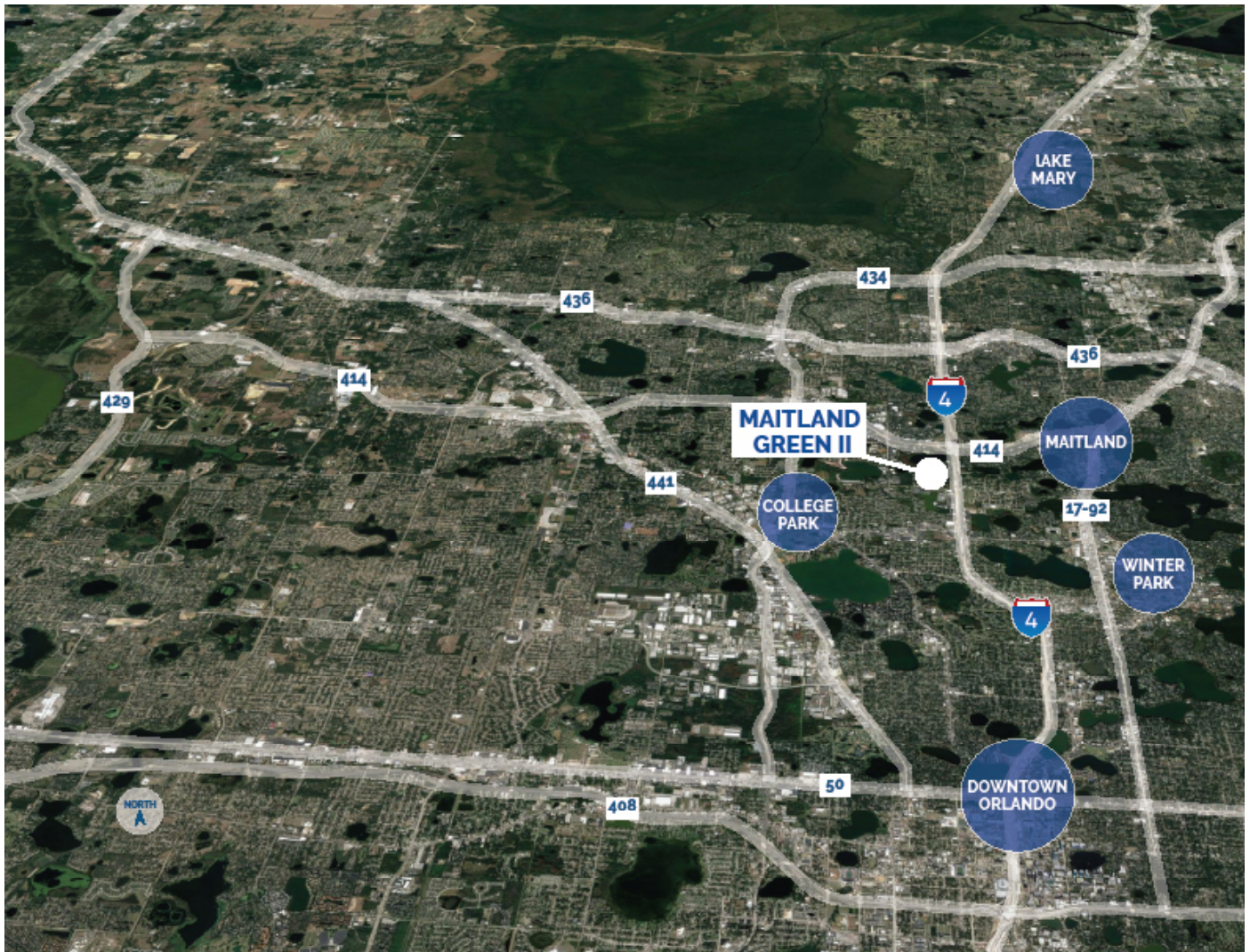


For more information, contact:  
**Damien Madsen**  
(407) 256.2844  
DMadsen@harbertrealty.com

**Josh Smith**  
(407) 377.4050  
JSmith@harbertrealty.com

Property Owned &  
Operated by:





## LOCATION HIGHLIGHTS

- ▶ Well-positioned within Maitland Center Office Park, one of Orlando's largest office submarkets
- ▶ Conveniently less than a half mile from I-4 & providing easy access to Downtown Orlando
- ▶ Close to business hotels, restaurants, retail and the RDV Sportsplex
- ▶ Ideally located in Central Florida's top executive housing market & the following established neighborhoods
  - Maitland: 3-Miles
  - Winter Park: 5-Miles
  - College Park: 7-Miles
  - Downtown: 8-Miles
  - Lake Mary: 12-Miles

For more information, contact:

**Damien Madsen**  
 (407) 256.2844  
 DMadsen@harbertrealty.com

**Josh Smith**  
 (407) 377.4050  
 JSmith@harbertrealty.com

Property Owned &  
 Operated by:

