

FOR LEASE CHISHOLM TRAIL SERVICE CENTER

18209 CHISHOLM TRAIL | SUITE 112
HOUSTON, TX 77029

CHISHOLM TRAIL
SERVICE CENTER

3,708 SF AVAILABLE

18209 CHISHOLM TRAIL

18209 CHISHOLM TRAIL

CHISHOLM TRAIL

JOHN KRUSE

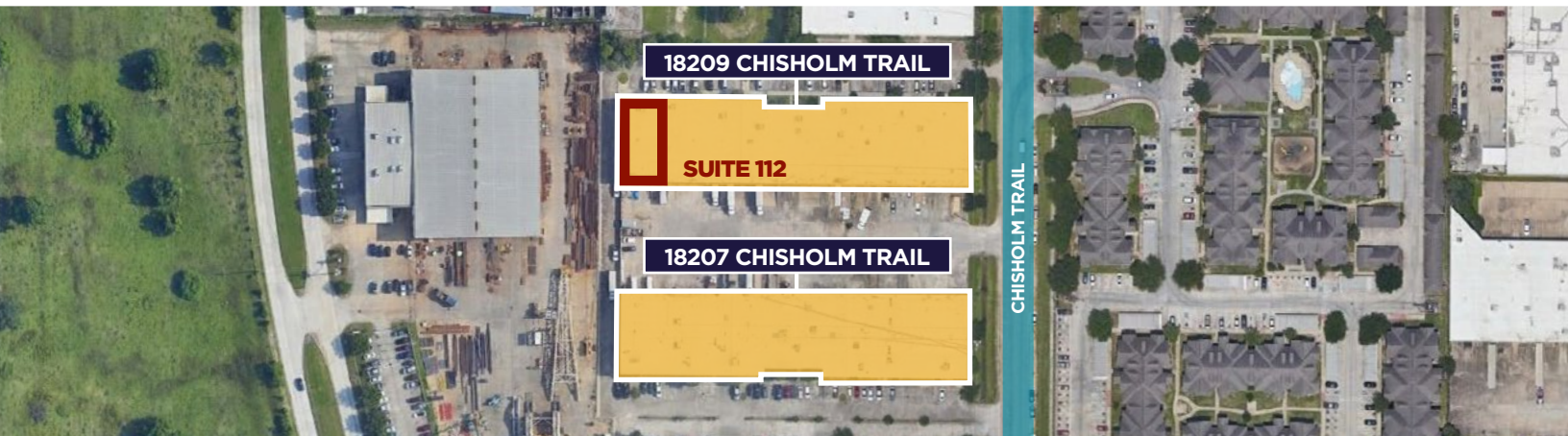
Managing Director
Direct: +1 281 688 9234
Mobile: +1 713 304 4919
john.kruse@cushwake.com

CARTER HOLMES

Senior Associate
Direct: +1 281 688 9274
Mobile: +1 713 417 5447
carter.holmes@cushwake.com



CUSHMAN &
WAKEFIELD



SPACE HIGHLIGHTS

TOTAL AVAILABILITY	3,708 SF
--------------------	----------

OFFICE AREA	1,345 SF
-------------	----------

WAREHOUSE AREA	2,363 SF
----------------	----------

CLEAR HEIGHT	18'
--------------	-----

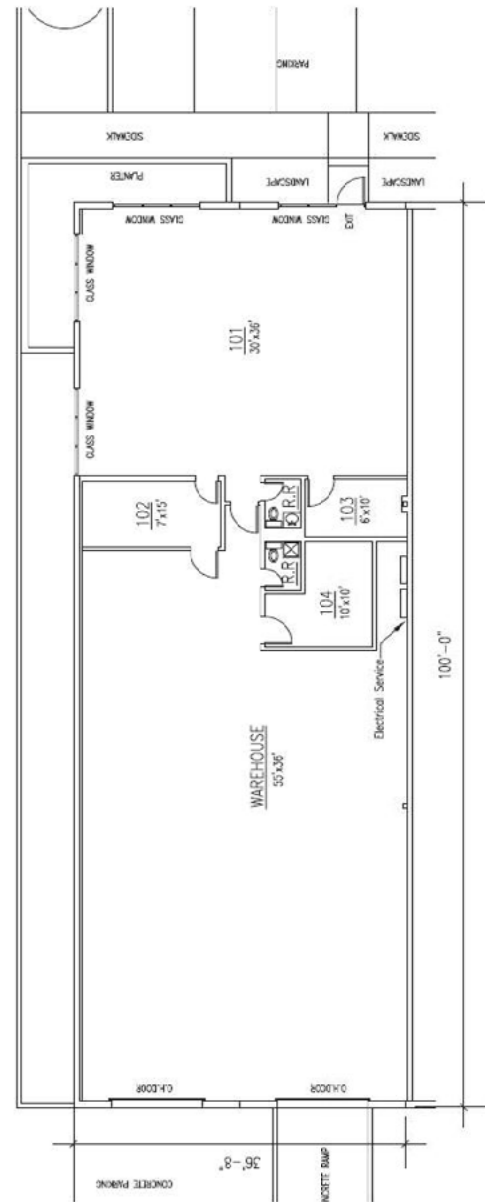
ZONING	Industrial
--------	------------

LOADING	(1) Dock (1) Ramp
---------	----------------------

CONFIGURATION	Rear Load
---------------	-----------

FEATURES

- Concrete Tilt Wall Construction
- Ample Parking
- All Concrete Paving
- Easy Access to Major Thoroughfare



JOHN KRUSE

Managing Director
Direct: +1 281 688 9234
Mobile: +1 713 304 4919
john.kruse@cushwake.com

CARTER HOLMES

Senior Associate
Direct: +1 281 688 9274
Mobile: +1 713 417 5447
carter.holmes@cushwake.com



**CUSHMAN &
WAKEFIELD**

1774

149

FOR LEASE CHISHOLM TRAIL SERVICE CENTER

**18209 CHISHOLM TRAIL | SUITE 112
HOUSTON, TX 77029**

For more information,
please contact:

JOHN KRUSE

Managing Director
Direct: +1 281 688 9234
Mobile: +1 713 304 4919
john.kruse@cushwake.com

CARTER HOLMES

Senior Associate
Direct: +1 281 688 9274
Mobile: +1 713 417 5447
carter.holmes@cushwake.com



1330 Post Oak Blvd., Suite 2700
Houston, TX 77056

cushmanwakefield.com

©2025 Cushman & Wakefield. All rights reserved. The information contained in this communication is strictly confidential. This information has been obtained from sources believed to be reliable but has not been verified. NO WARRANTY OR REPRESENTATION, EXPRESS OR IMPLIED, IS MADE AS TO THE CONDITION OF THE PROPERTY (OR PROPERTIES) REFERENCED HEREIN OR AS TO THE ACCURACY OR COMPLETENESS OF THE INFORMATION CONTAINED HEREIN, AND SAME IS SUBMITTED SUBJECT TO ERRORS, OMISSIONS, CHANGE OF PRICE, RENTAL OR OTHER CONDITIONS, WITHDRAWAL WITHOUT NOTICE, AND TO ANY SPECIAL LISTING CONDITIONS IMPOSED BY THE PROPERTY OWNER(S). ANY PROJECTIONS, OPINIONS OR ESTIMATES ARE SUBJECT TO UNCERTAINTY AND DO NOT SIGNIFY CURRENT OR FUTURE PROPERTY PERFORMANCE.

