

RETAIL FOR LEASE

401 Columbia River Hwy

CLATSKANIE, OR 97016



Prime standalone retail with drive-thru in the heart of Clatskanie

CONTACT

David Moore

503 707 9028 / dmoore@naielliott.com

NAIElliott



Drive-thru convenience with excellent visibility

Located in the heart of Clatskanie, OR, this space offers a unique opportunity in a charming, close-knit community surrounded by the beauty of the Pacific Northwest. Perfect for nonprofits and mission-driven organizations, it provides an inspiring setting to connect, collaborate, and thrive.

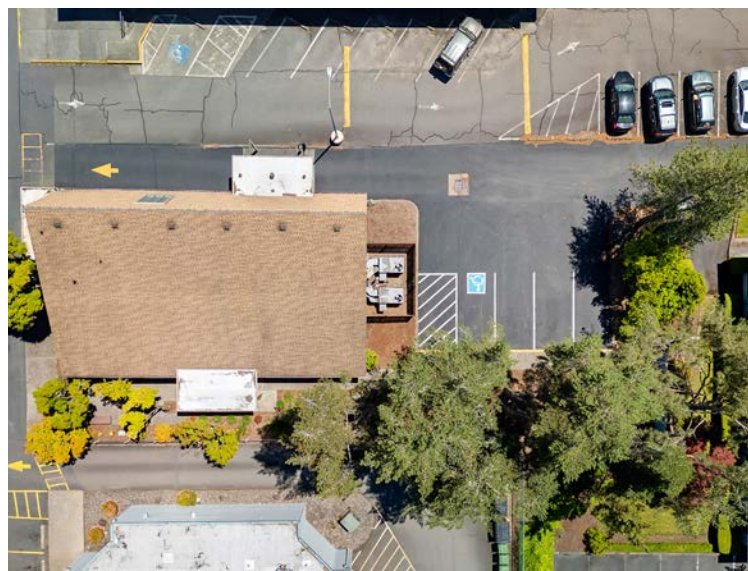
ADDRESS	401 Columbia River Highway, Clatskanie, OR 97016
PRICE/RATE	Negotiable
LEASE TYPE	NNN
BUILDING SIZE	3,894 SF (total)
	2,614 SF (ground floor)
	1,280 (2nd floor) (including 480 SF of unfinished storage)

HIGHLIGHTS

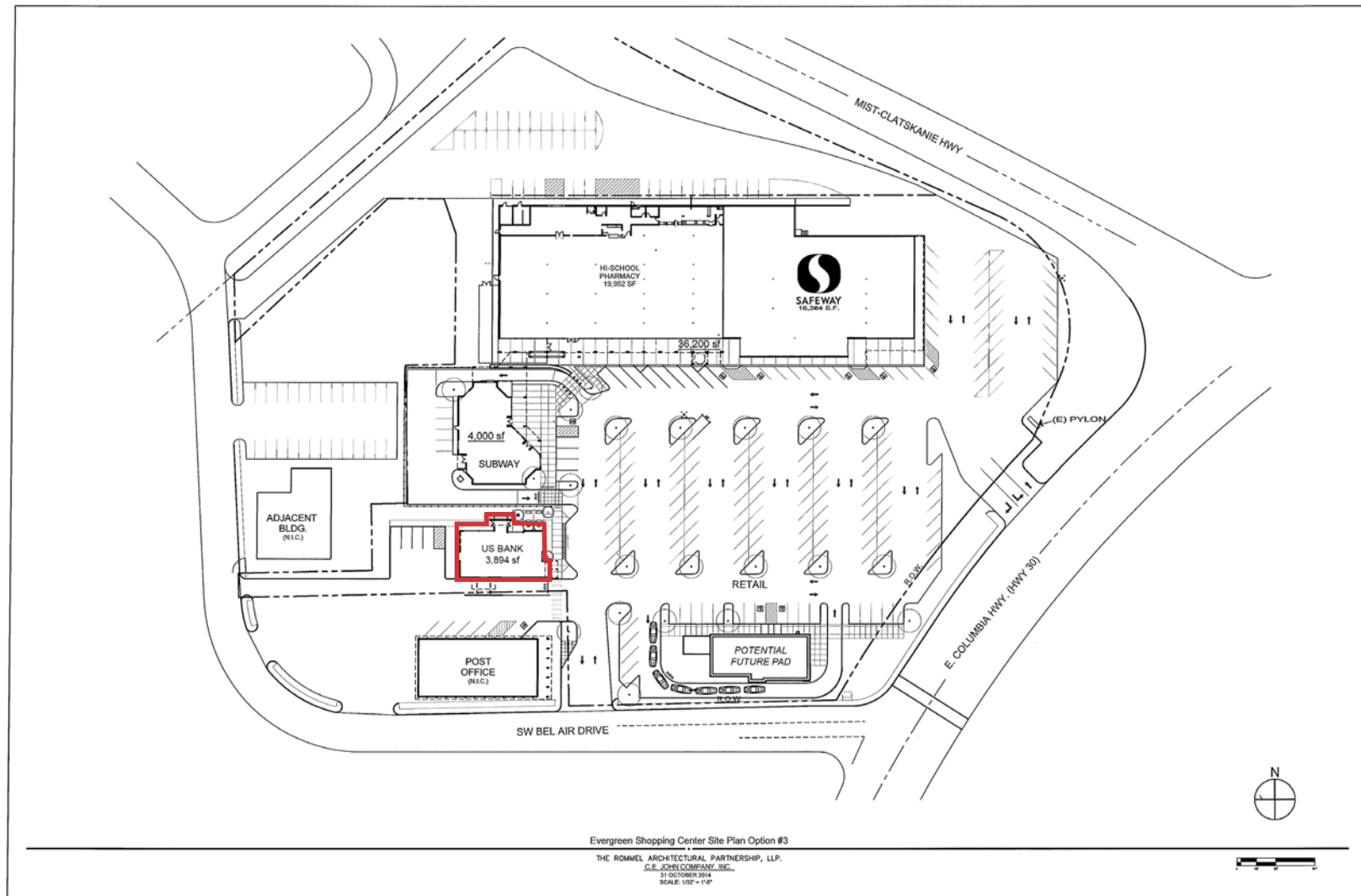
- Easy highway access
- Established co-tenants including Hi School Pharmacy, Safeway and Subway
- High visibility
- Standalone pad building with a drive-thru feature

TRAFFIC COUNTS

- Columbia River HWY & SW Belair Dr - 7,806 ADT ('20)



Site Plan



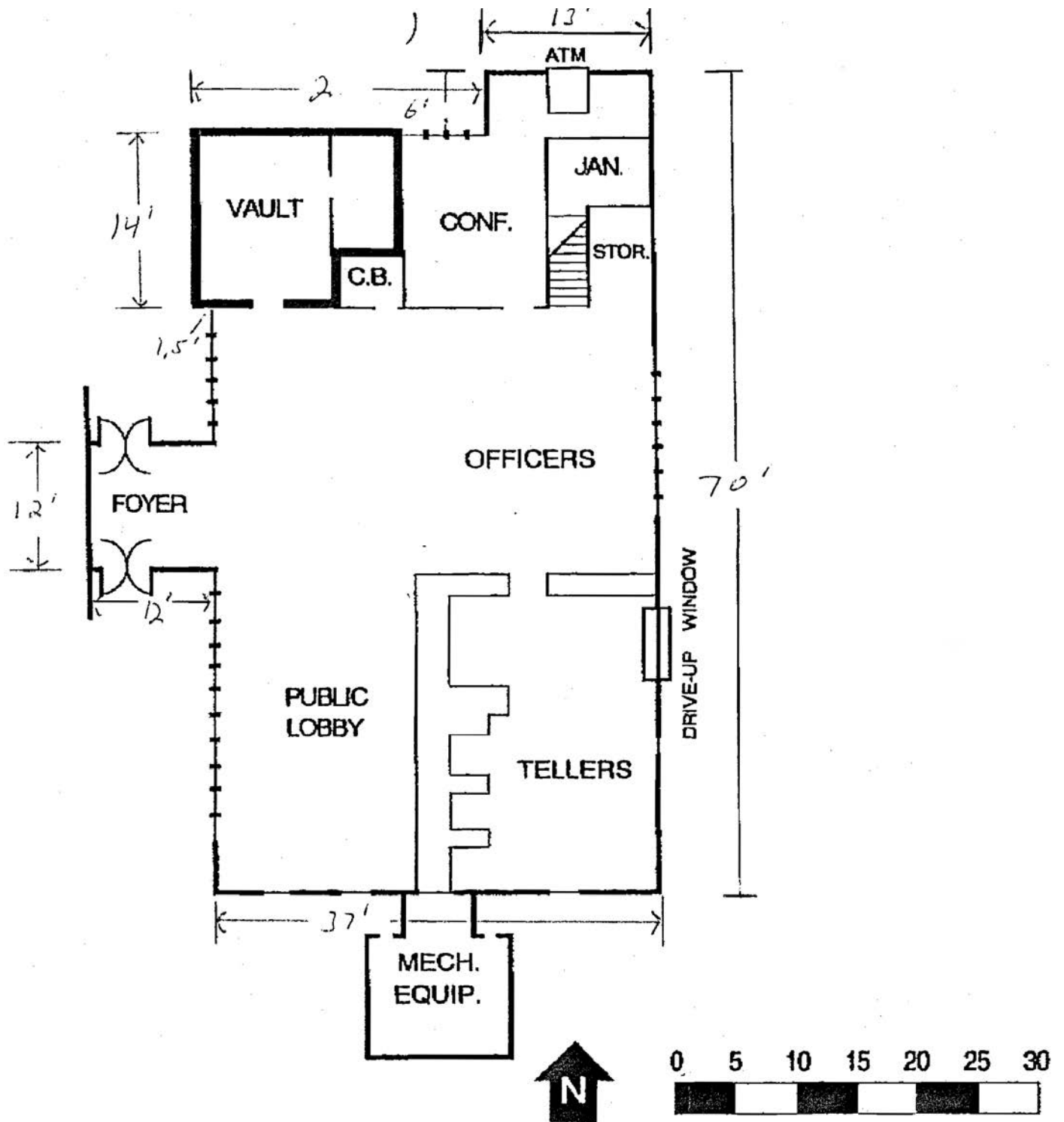
CONTACT

David Moore

503 707 9028 / dmoore@naielliott.com



Floor Plan



CONTACT

David Moore

503 707 9028 / dmoore@naielliott.com

NAIElliott

Photos



CONTACT

David Moore

503 707 9028 / dmoore@naielliott.com

NAIElliott



CONTACT

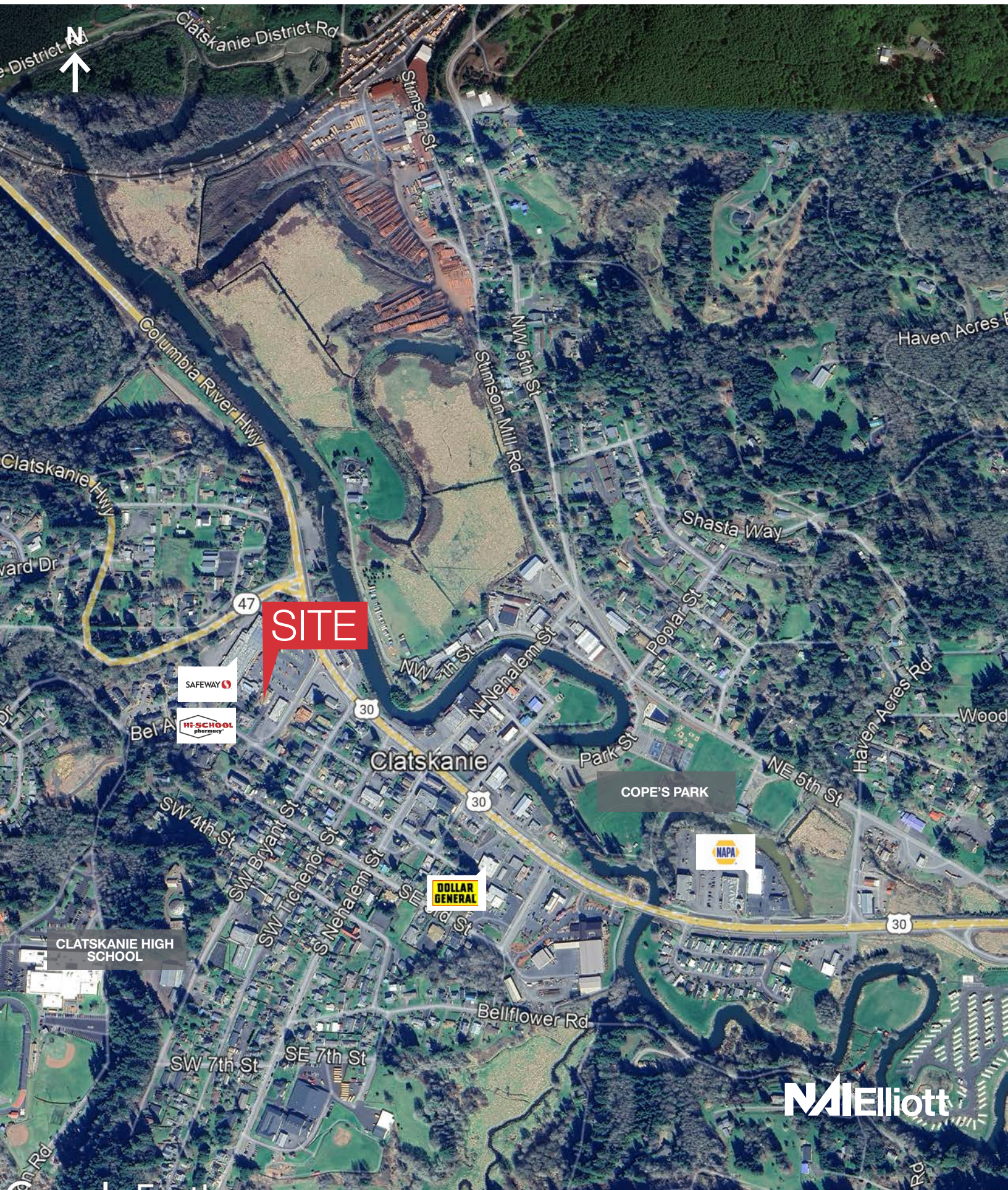
David Moore

503 707 9028 / dmoore@naielliott.com

NAIElliott

The information herein has been obtained from sources we deem reliable. We do not, however, guarantee its accuracy. All information should be verified prior to purchase/leasing. View the Real Estate Agency Pamphlet by visiting our website, www.naielliott.com/agencydisclosures

Trade Area





SITE