

# 5504 Main St +/- 4,864 Sqft Retail/Office Downtown Flowery Branch, Ga



**Historic Property in Downtown Flowery Branch  
Offered at \$1,495,000**

**BERKSHIRE HATHAWAY  
COMMERCIAL DIVISION**

**DON GRIMSLEY**  
COMMERCIAL REAL ESTATE

- **Historic two-story commercial building** built in 1900
- **Approx. 4,864± total square feet** (2,432 SF per level - top floor is unfinished). There is also approximately 2,432 SF of unfinished crawl space/basement for potential storage
- **0.13 acre corner lot at Main and Railroad Streets**
- Excellent opportunity for a **restaurant, event venue, retail, or office space that includes a open grass/lawn area**
- **Flexible open floor plan with two floors**
- **Additional structure/courtyard included** that used to serve as the town jail
- **Exceptional visibility and walkability** in a high-traffic downtown location

Don Grimsley  
Office: 770-533-6738  
Cell: 706-968-9000  
Email:  
Don@DonGrimsley.com  
500 Jesse Jewell Pkwy  
Ste 300  
Gainesville, GA 30501

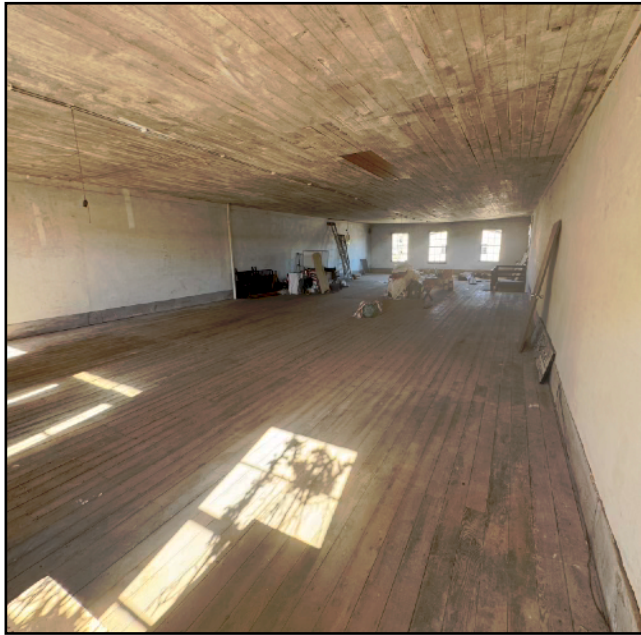
[Click Here for a Virtual Tour](#)





**Unfinished Second Story**

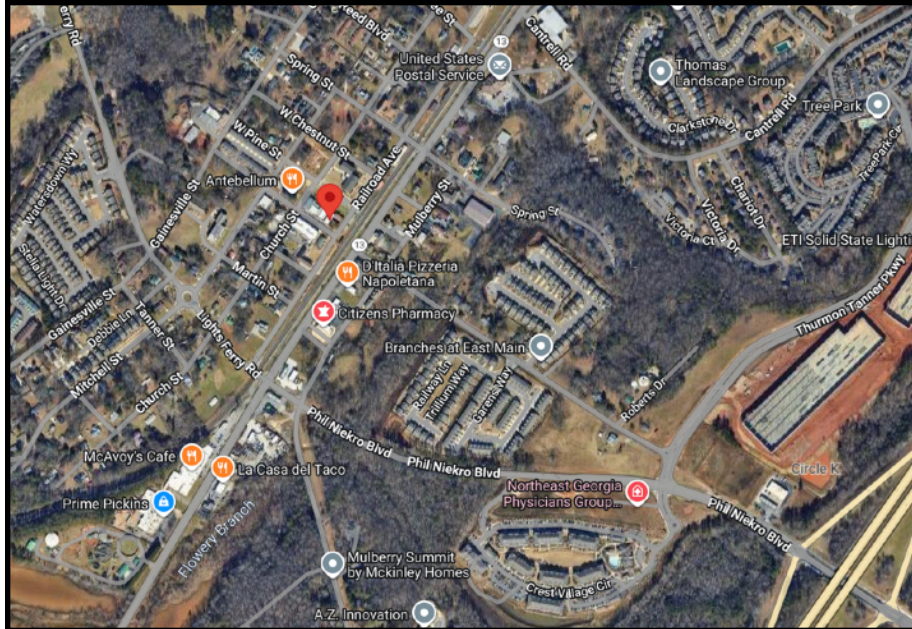




**Unfinished Second Story**



**Old Jail/Outdoor Courtyard Area**



**From Atlanta** - take I-85 North to I-985 to Exit 12. Turn left and travel to .8 miles to Railroad Ave...turn right for approx .2 miles. Turn left on Main street and the property will be the first building on your right.

For more information, call 770-533-6738 or email at [Don@DonGrimsley.com](mailto:Don@DonGrimsley.com)  
Berkshire Hathaway HomeServices Commercial Division: 770-536-3007





