

## Kietzke Plaza Office Complex

4600 Kietzke Ln, Reno, NV 89502

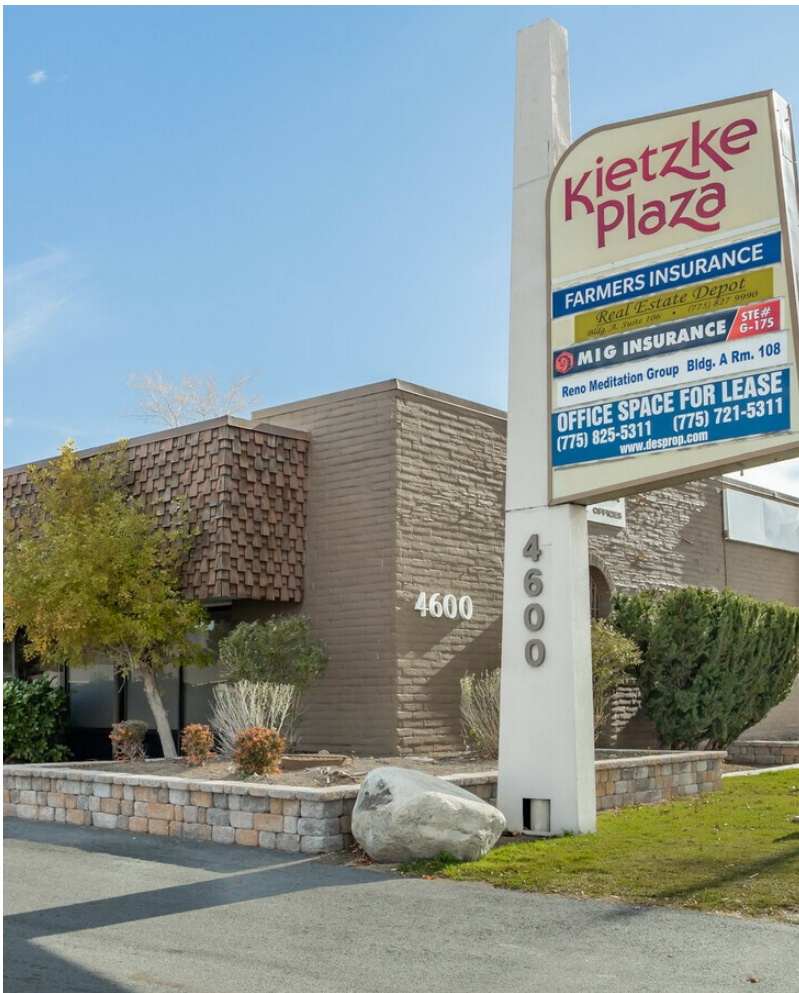
### Fred Desiderio

Desiderio Properties

4600 Kietzke Ln, Suite G-170, Reno, NV 89502

[desi3@prodigy.net](mailto:desi3@prodigy.net)

(775) 825-5311



# Kietzke Plaza Office Complex

\$19.20 /SF/YR

This location has over 100,000 square feet of leasable office space in fourteen single story buildings set in a garden setting. Reno, Nevada. Tenant improvement allowance available. Call for more information. (775) 825-5311

Easy access to highway 395 and the Reno/Tahoe International Airport. Within walking distance to one of Reno's major shopping area and across the street from the Reno/Sparks Convention Center. Utilities and 5 day janitorial service included. There is an on-site Conference Room which can be reserved by tenants with advanced notice. Also Business Class High Speed Internet Available....



Rental Rate:	\$19.20 /SF/YR
Total Space Available:	5,740 SF
Max. Contiguous:	2,510.00 SF
Property Type:	Office
Building Class:	C
Rentable Building Area:	112,116 SF
Year Built:	1974
Walk Score @:	63 (Somewhat Walkable)
Transit Score @:	45 (Some Transit)
Rental Rate Mo:	\$1.60 /SF/MO

### 1st Floor Ste A102

Space Available	614 SF
Rental Rate	\$19.20 /SF/YR
Date Available	Now
Service Type	Full Service
Built Out As	Standard Office
Space Type	Relet
Space Use	Office
Lease Term	Negotiable

3 Private Offices with Reception or Waiting Area. On your or HVAC system. Tenant Improvement allowance available.

1

### 1st Floor Ste B111

Space Available	830 SF
Rental Rate	\$19.20 /SF/YR
Contiguous Area	2,510 SF
Date Available	February 01, 2025
Service Type	Full Service
Built Out As	Standard Office
Space Type	Relet
Space Use	Office
Lease Term	Negotiable

(2) partitioned offices with large work area. Storage. Tenant allowance available. On your own HVAC system. High speed internet service

2

### 1st Floor Ste B113

Space Available	882 SF
Rental Rate	\$19.20 /SF/YR
Contiguous Area	2,510 SF
Date Available	February 01, 2025
Service Type	Full Service
Built Out As	Standard Office
Space Type	Relet
Space Use	Office
Lease Term	Negotiable

(2) partitioned offices with large work area. Storage. Tenant allowance available. On your own HVAC system. High speed internet service

3

### 1st Floor Ste B114

Space Available	798 SF
Rental Rate	\$19.20 /SF/YR
Contiguous Area	2,510 SF
Date Available	Now
Service Type	Full Service
Built Out As	Standard Office
Space Type	Relet
Space Use	Office
Lease Term	2 - 5 Years

4 Private office with storage. Reception area. Tenant Improvement allowance available. Control of your own HVAC unit.

4

### 1st Floor Ste c120

Space Available	540 SF
Rental Rate	\$19.20 /SF/YR
Date Available	Now
Service Type	Full Service
Built Out As	Standard Office
Space Type	Relet
Space Use	Office
Lease Term	Negotiable

1 Large Private office with storage. Reception area. Tenant Improvement allowance available. Control of your own HVAC unit.

5

### 1st Floor Ste c126

Space Available	420 SF
Rental Rate	\$19.20 /SF/YR
Date Available	Now
Service Type	Full Service
Built Out As	Standard Office
Space Type	Relet
Space Use	Office
Lease Term	Negotiable

1 Large Private office with storage. Reception area. Tenant Improvement allowance available. Control of your own HVAC unit.

6

## 1st Floor Ste M246

Space Available	1,656 SF
Rental Rate	\$19.20 /SF/YR
Date Available	Now
Service Type	Full Service
Built Out As	Standard Office
Space Type	Relet
Space Use	Office
Lease Term	2 - 5 Years

7 Private offices. Reception area. Kitchen. Tenant Improvement allowance available. Control of your own HVAC unit.

7

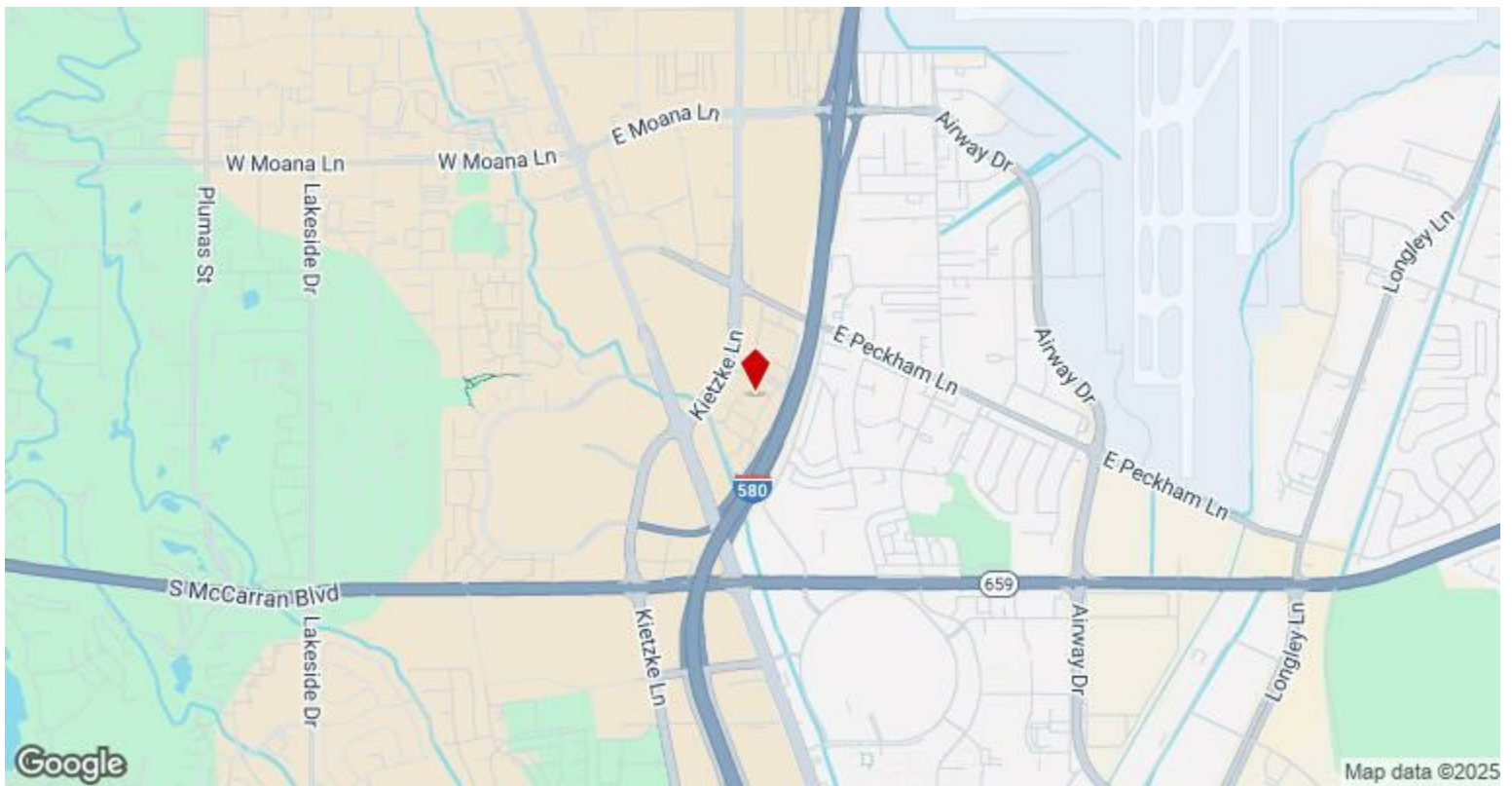
---

## Major Tenant Information

---

<b>Tenant</b>	<b>SF Occupied</b>	<b>Lease Expired</b>
Nevada Department of Taxation	2,000	
Occupational Safety & Health Administration	3,000	





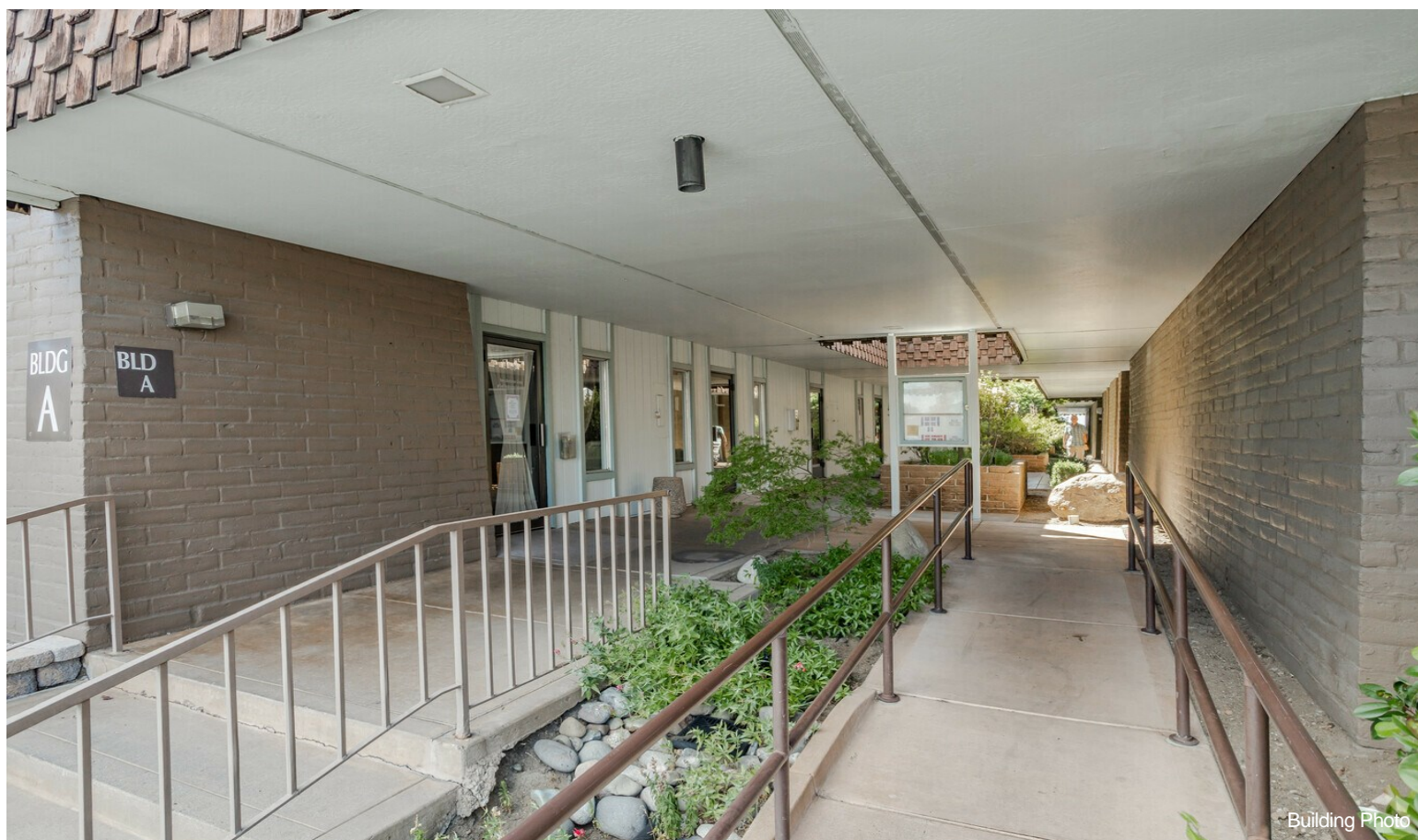
## 4600 Kietzke Ln, Reno, NV 89502

This location has over 100,000 square feet of leasable office space in fourteen single story buildings set in a garden setting. Reno, Nevada. Tenant improvement allowance available. Call for more information. (775) 825-5311

Easy access to highway 395 and the Reno/Tahoe International Airport. Within walking distance to one of Reno's major shopping area and across the street from the Reno/Sparks Convention Center. Utilities and 5 day janitorial service included. There is an on-site Conference Room which can be reserved by tenants with advanced notice. Also Business Class High Speed Internet Available.



# Property Photos



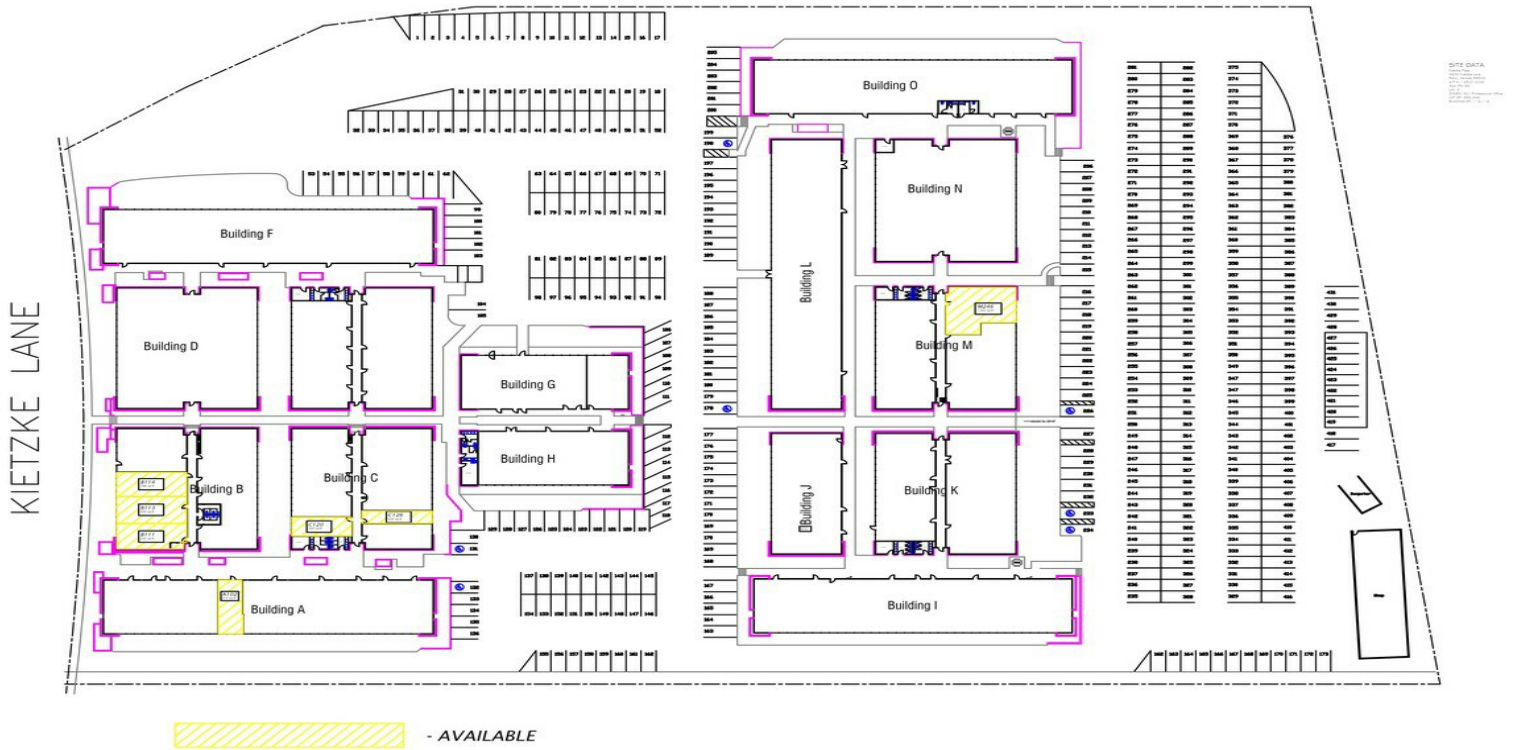


# Property Photos





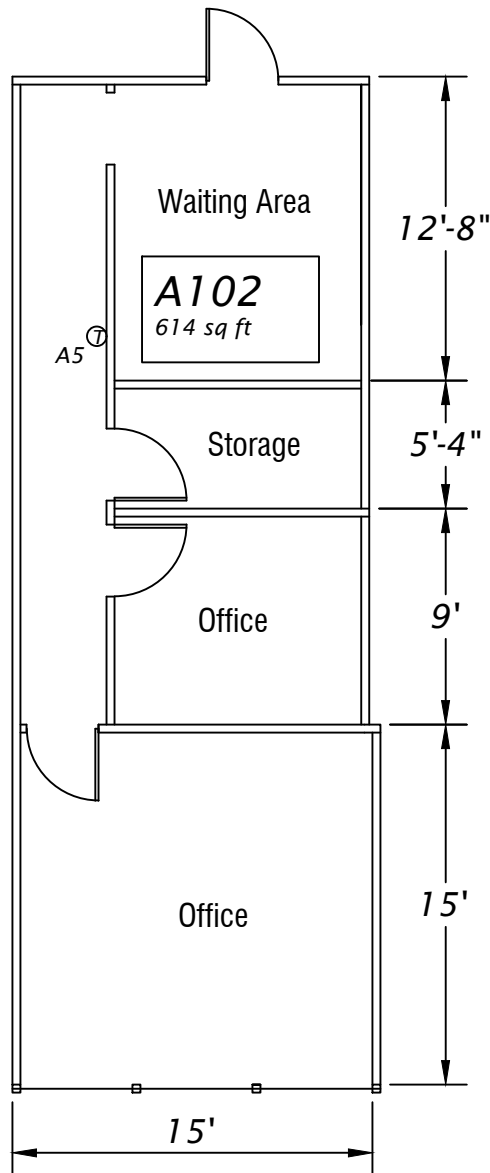
# Property Photos



**KIETZKE PLAZA OFFICE COMPLEX - RENO, NEVADA**



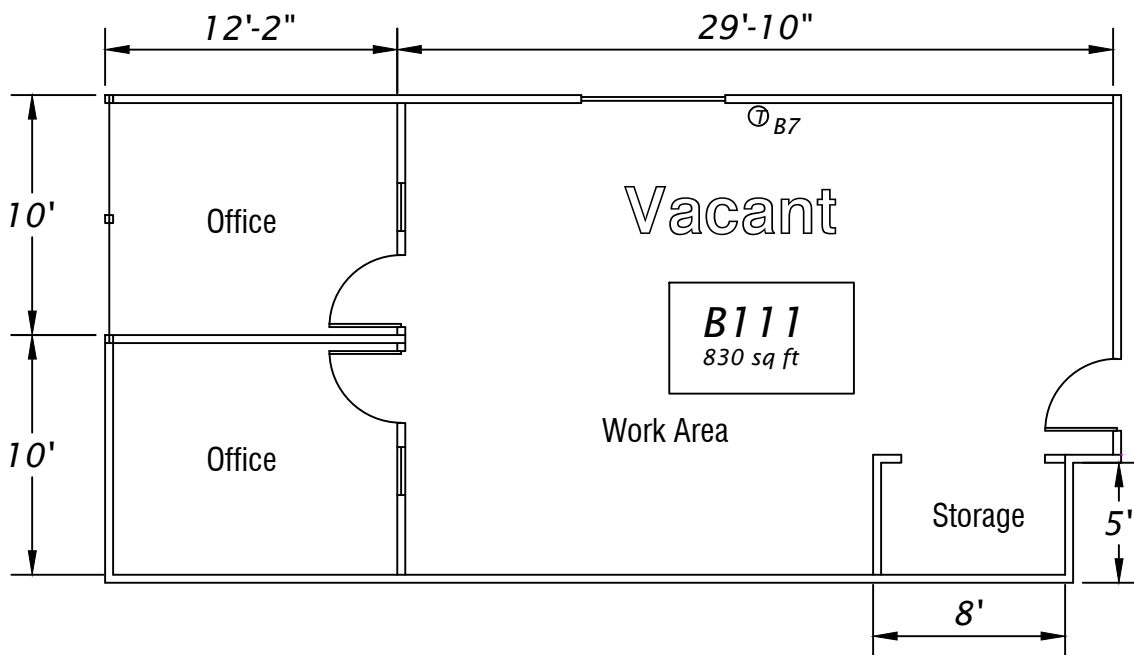
CONTACT INFO:  
Kietzke Plaza Office Complex LLC  
4600 Kietzke Lane G-170  
Reno, Nevada 89502  
(775) 825-5311  
(775) 825-5396 fax  
desprop@desprop.net



Scale: 1/8" = 1'-0"

Kietzke Plaza Office Complex  
4600 Kietzke Lane  
Building A Suite 102  
614 SF

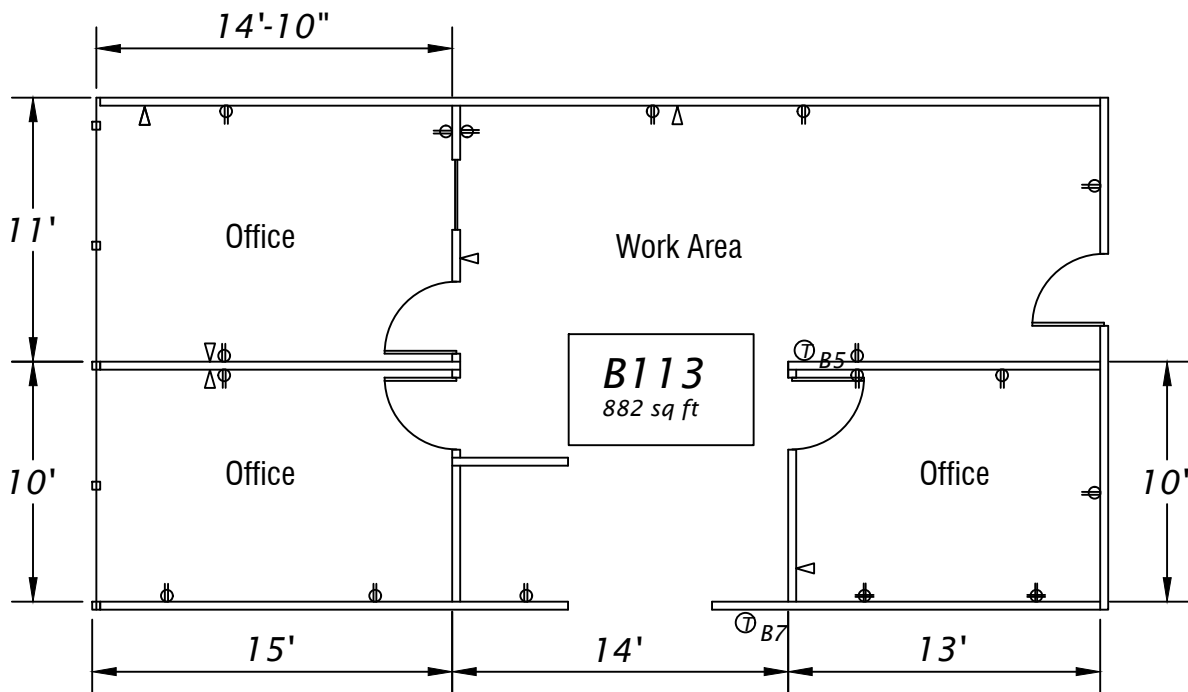
CONTACT INFO:  
Kietzke Plaza Office Complex LLC  
4600 Kietzke Lane G-170  
Reno, Nevada 89502  
(775) 825-5311  
(775) 825-5396 fax  
desprop@desprop.net



Kietzke Plaza Office Complex  
4600 Kietzke Lane  
Building B Suite 111  
830 SF



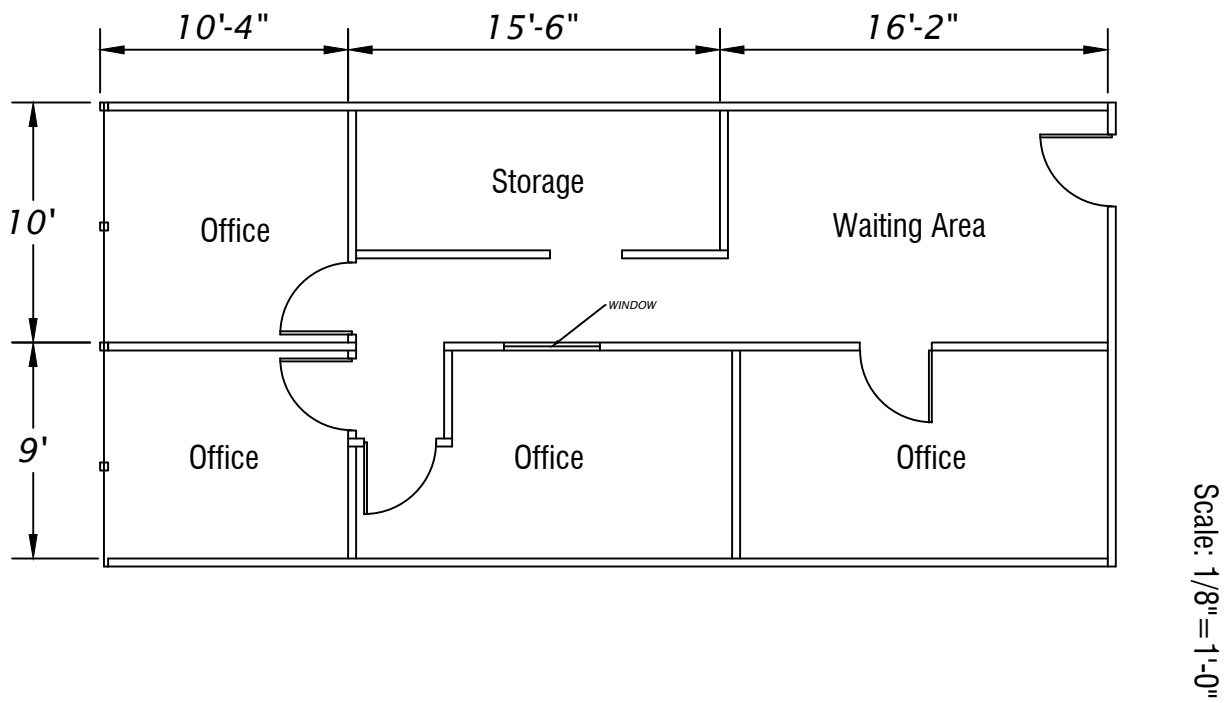
CONTACT INFO:  
Kietzke Plaza Office Complex LLC  
4600 Kietzke Lane G-170  
Reno, Nevada 89502  
(775) 825-5311  
(775) 825-5396 fax  
desprop@desprop.net



Scale: 1/8" = 1'-0"

Kietzke Plaza Office Complex  
4600 Kietzke Lane  
Building B Suite 113  
882 SF

CONTACT INFO:  
Kietzke Plaza Office Complex LLC  
4600 Kietzke Lane G-170  
Reno, Nevada 89502  
(775) 825-5311  
(775) 825-5396 fax  
desprop@desprop.net



Kietzke Plaza Office Complex  
4600 Kietzke Lane  
Building B Suite 114  
798 SF

CONTACT INFO:

Kietzke Plaza Office Complex LLC

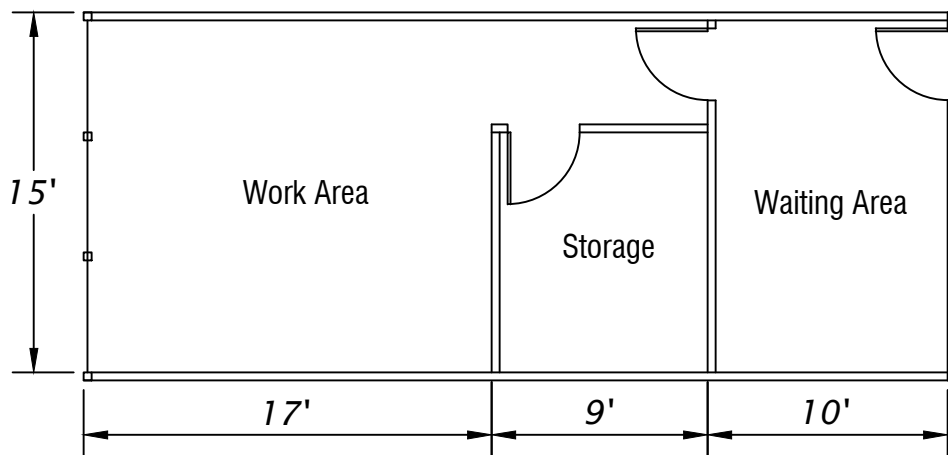
4600 Kietzke Lane G-170

Reno, Nevada 89502

(775) 825-5311

(775) 825-5396 fax

desprop@desprop.net



Scale: 1/8" = 1'-0"

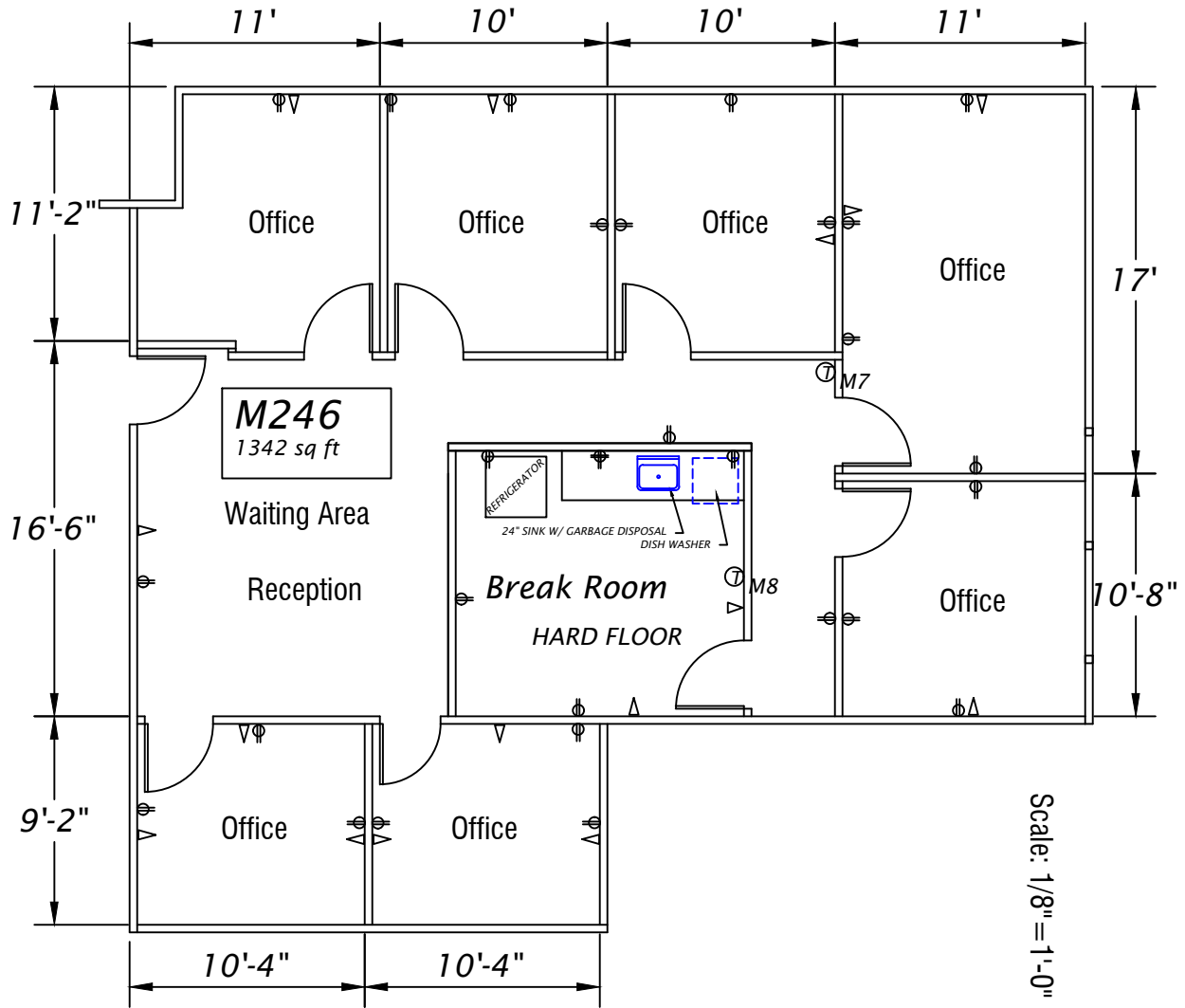
Kietzke Plaza Office Complex

4600 Kietzke Lane

Building C Suite 120

540 SF

CONTACT INFO:  
Kietzke Plaza Office Complex LLC  
4600 Kietzke Lane G-170  
Reno, Nevada 89502  
(775) 825-5311  
(775) 825-5396 fax  
desprop@desprop.net



Kietzke Plaza Office Complex  
4600 Kietzke Lane  
Building M Suite 246  
1342 SF