



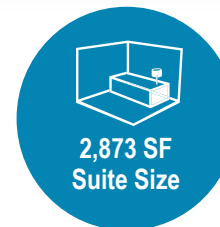
**1611 W. WHISPERING WIND  
DRIVE PHOENIX | AZ**

**FOR MORE INFORMATION, CONTACT:**

**CHRIS ROGERS**  
Executive Vice President  
O: 602.575.2309 | M: 602.513.0555  
crogers@daumcre.com

**TREVOR MCKENDRY**  
Executive Vice President  
O: 602.575.2332 | M: 602.686.2236  
tmckendry@daumcre.com

**FOR LEASE**  
2,873 SF SUITE 1





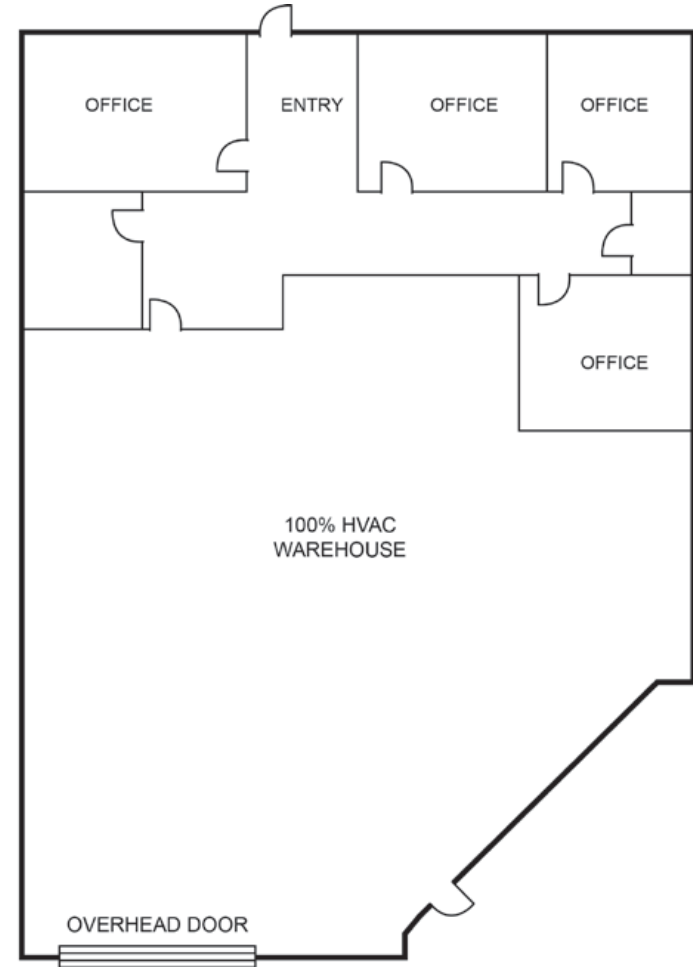
**1611 W. WHISPERING WIND  
DRIVE PHOENIX | AZ**

**FOR LEASE**  
**2,873 SF SUITE 1**

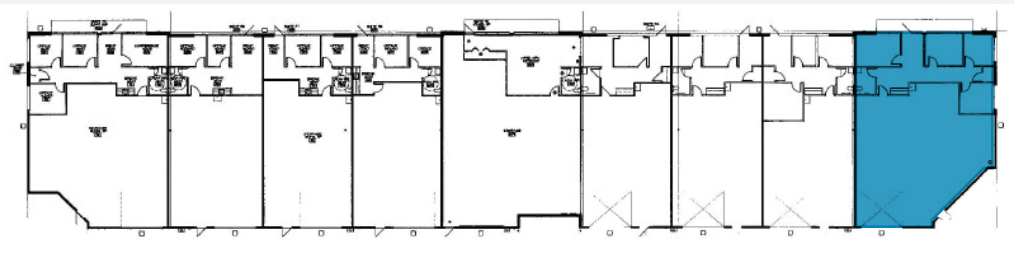
**FLOOR PLAN**

**PROPERTY HIGHLIGHTS**

- Suite 1 Available
- Suite Size: 2,873 SF
- Building Size: 20,777 SF
- 12' X 14' Grade Level Door
- 16' Clear Height
- New Landscaping & Asphalt
- CP/GCP Zoning



\*NOT TO SCALE



**FOR MORE INFORMATION, CONTACT:**

**CHRIS ROGERS**  
Executive Vice President  
O: 602.575.2309 | M: 602.513.0555  
crogers@daumcre.com

**TREVOR MCKENDRY**  
Executive Vice President  
O: 602.575.2332 | M: 602.686.2236  
tmckendry@daumcre.com



Although all information is furnished regarding for sale, rental or financing is from sources deemed reliable, such information has not been verified and no express representation is made nor is any to be implied as to the accuracy thereof, and it is submitted subject to errors, omissions, changes of price, rental or other conditions, prior sale, lease or financing, or withdrawal without notice. D/AQ Corp. # 01129558

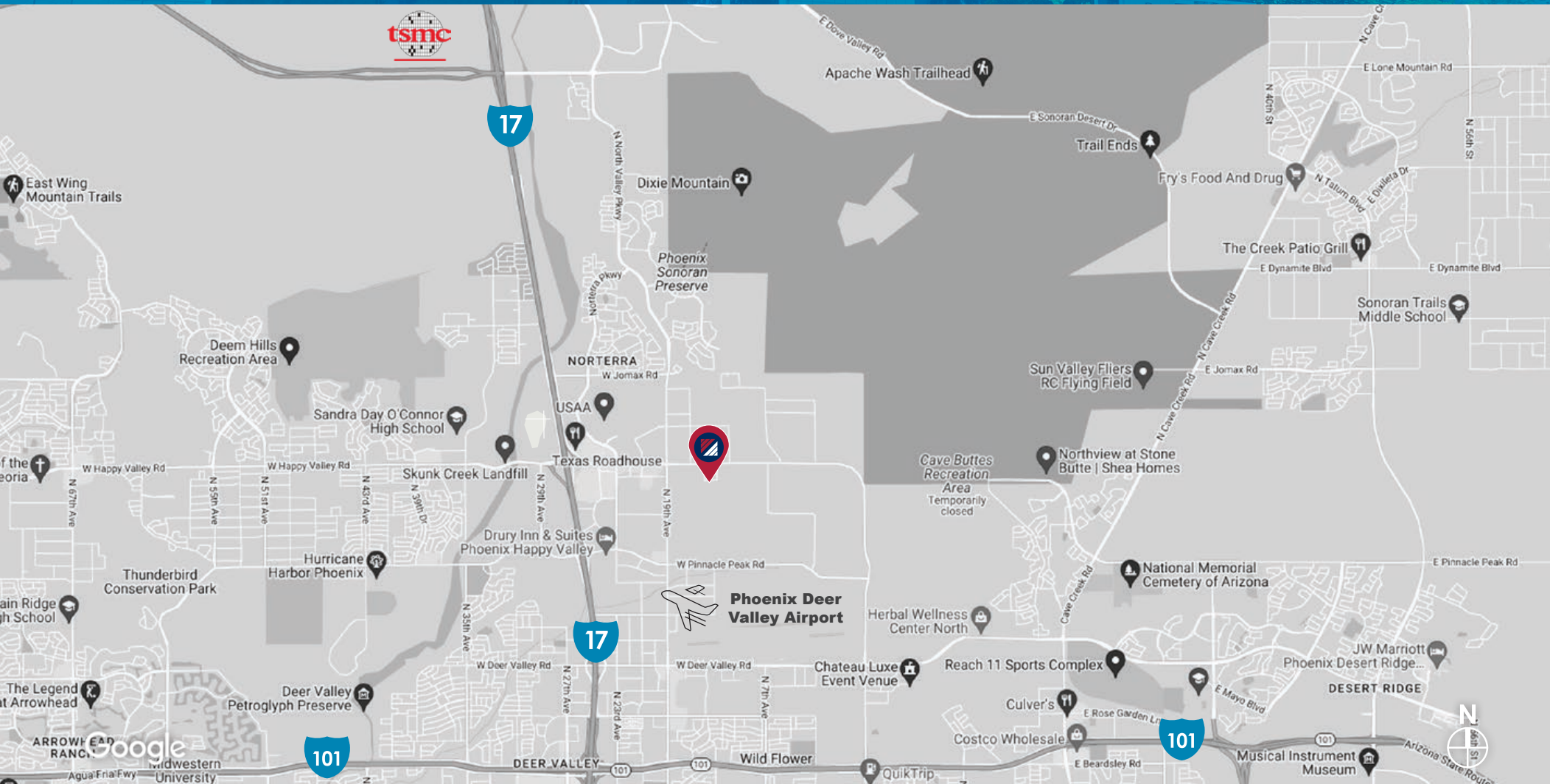


# 1611 W. WHISPERING WIND DRIVE PHOENIX | AZ

## FOR LEASE

### 2,873 SF SUITE 1

#### LOCATION MAP



#### FOR MORE INFORMATION, CONTACT:

**CHRIS ROGERS**  
Executive Vice President  
O: 602.575.2309 | M: 602.513.0555  
crogers@daumcre.com

**TREVOR MCKENDRY**  
Executive Vice President  
O: 602.575.2332 | M: 602.686.2236  
tmckendry@daumcre.com



Although all information is furnished regarding for sale, rental or financing is from sources deemed reliable, such information has not been verified and no express representation is made nor is any to be implied as to the accuracy thereof, and it is submitted subject to errors, omissions, changes of price, rental or other conditions, prior sale, lease or financing, or withdrawal without notice. D/AQ Corp. # 01129558

# 1611 W. WHISPERING WIND DRIVE PHOENIX | AZ

## TOP COMPANIES NO. EMPLOYEES

1. TSMC  
20,000 Employees
2. THE ARIZONA REPUBLIC  
1,011 Employees
3. COX  
2,158 Employees
4. HONEYWELL  
6,111 Employees
5. DISCOVER  
3,003 Employees
6. BEST WESTERN  
966 Employees
7. AMERICAN EXPRESS  
7,603 Employees
8. PETSMART  
2,034 Employees



## FOR MORE INFORMATION, CONTACT:

CHRIS ROGERS  
Executive Vice President  
O: 602.575.2309 | M: 602.513.0555  
crogers@daumcre.com

TREVOR MCKENDRY  
Executive Vice President  
O: 602.575.2332 | M: 602.686.2236  
tmckendry@daumcre.com



Although all information is furnished regarding for sale, rental or financing is from sources deemed reliable, such information has not been verified and no express representation is made nor is any to be implied as to the accuracy thereof, and it is submitted subject to errors, omissions, changes of price, rental or other conditions, prior sale, lease or financing, or withdrawal without notice. D/AQ Corp. # 01129558

**FOR LEASE**  
2,873 SF SUITE 1



**1611 W. WHISPERING WIND**  
**DRIVE PHOENIX | AZ**

**FOR MORE INFORMATION, CONTACT:**

CHRIS ROGERS  
Executive Vice President  
O: 602.575.2309 | M: 602.513.0555  
crogers@daumcre.com

TREVOR MCKENDRY  
Executive Vice President  
O: 602.575.2332 | M: 602.686.2236  
tmckendry@daumcre.com



Although all information is furnished regarding for sale, rental or financing is from sources deemed reliable, such information has not been verified and no express representation is made nor is any to be implied as to the accuracy thereof, and it is submitted subject to errors, omissions, changes of price, rental or other conditions, prior sale, lease or financing, or withdrawal without notice. D/AQ Corp. # 01129558