



# CLINTON MEDICAL/GENERAL OFFICE

1407 NORTH 2000 WEST, CLINTON, UT 84015

**RATE REDUCTION**



## PROPERTY INFORMATION

- ✓ **Suite C:** 1,648 RSF Main Level Office
- ✓ Lease Rate: \$23.00/SF Full Service
- ✓ **Lower Level:** 4,539 RSF Shell Space
- ✓ Lease Rate: \$7.00/SF NNN
  
- ✓ Tenant Improvement Allowance
- ✓ Large Common Break Room
- ✓ ADA Compliant
- ✓ Ample Parking

## DEMOGRAPHICS

	1 Mile	2 Mile	3 Mile
Population	10,825	84,847	169,012
Households	3,082	25,578	51,714
Avg. Household Income	\$89,162	\$73,892	\$73,268

## TRAFFIC COUNTS

### CONTACT US

**DEREK KLOPFER**  
 ✉ derek@cresutah.com ☎ 801.897.9264

**KELLEN KONCAR**  
 ✉ kellen@cresutah.com ☎ 801.824.1311

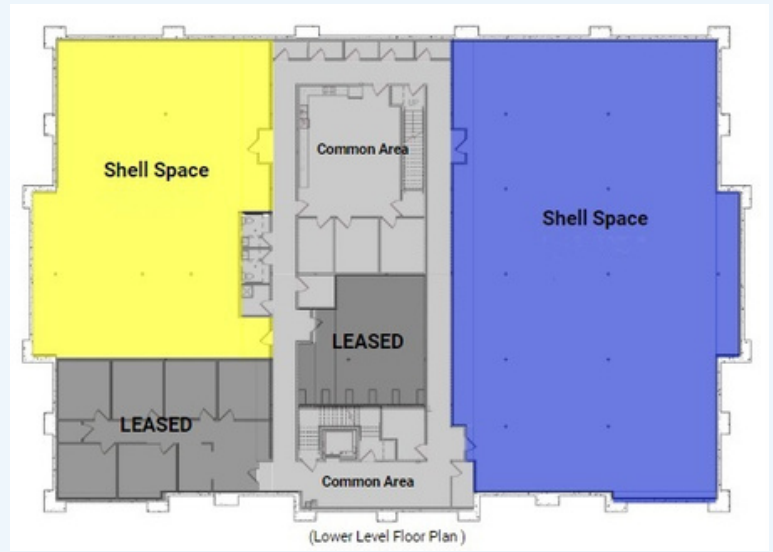
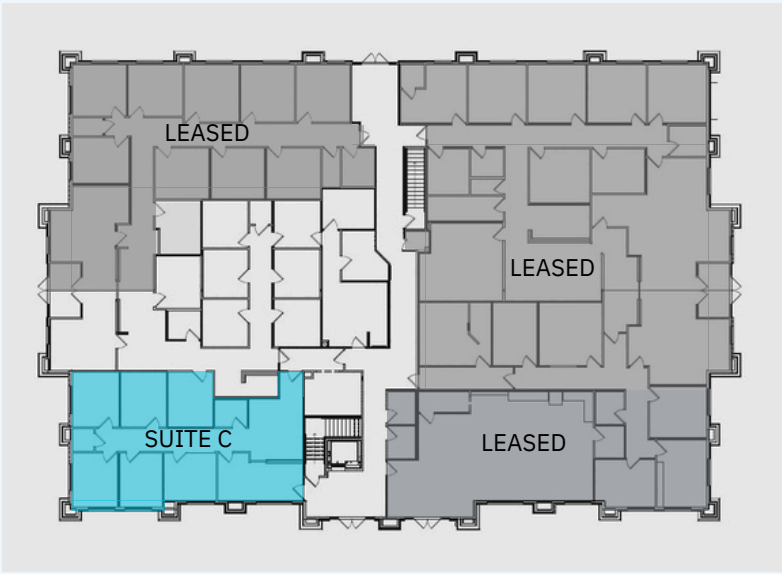
🌐 [www.cresutah.com](http://www.cresutah.com)

Call Us  
**801.876.6070** 📞



# CLINTON MEDICAL/GENERAL OFFICE

1407 NORTH 2000 WEST, CLINTON, UT 84015



This information is given with the understanding that all negotiations and/or real estate activity related to the property described above shall be conducted through this CRES office. The above information while not guaranteed, was obtained from sources we believe to be reliable.

## CONTACT US

**DEREK KLOPPER**

✉ [derek@cresutah.com](mailto:derek@cresutah.com)

☎ 801.897.9264

**KELLEN KONCAR**

✉ [kellen@cresutah.com](mailto:kellen@cresutah.com)

☎ 801.824.1311 [www.cresutah.com](http://www.cresutah.com)

Call Us  
**801.876.6070**