



# CHURCH FOR SALE

**1405 COTTONWOOD STREET  
WOODLAND, CALIFORNIA**

**±18,578 SQUARE FOOT FACILITY  
±2.98 ACRE PARCEL**

- **ABUNDANT PARKING**
- **BEAUTIFUL FACILITY**
- **GREAT LOCATION**
- **MATURE NEIGHBORHOOD**

**CALL FOR OFFERS  
BY FRIDAY  
DECEMBER 12, 2025**



**Peter Nixon**

**916 259 4453**

[peter.nixon@newcastlepg.com](mailto:peter.nixon@newcastlepg.com)

Lic. 00975548

**Kris Riley**

**916 259 4454**

[kris.riley@newcastlepg.com](mailto:kris.riley@newcastlepg.com)

Lic. 01290492





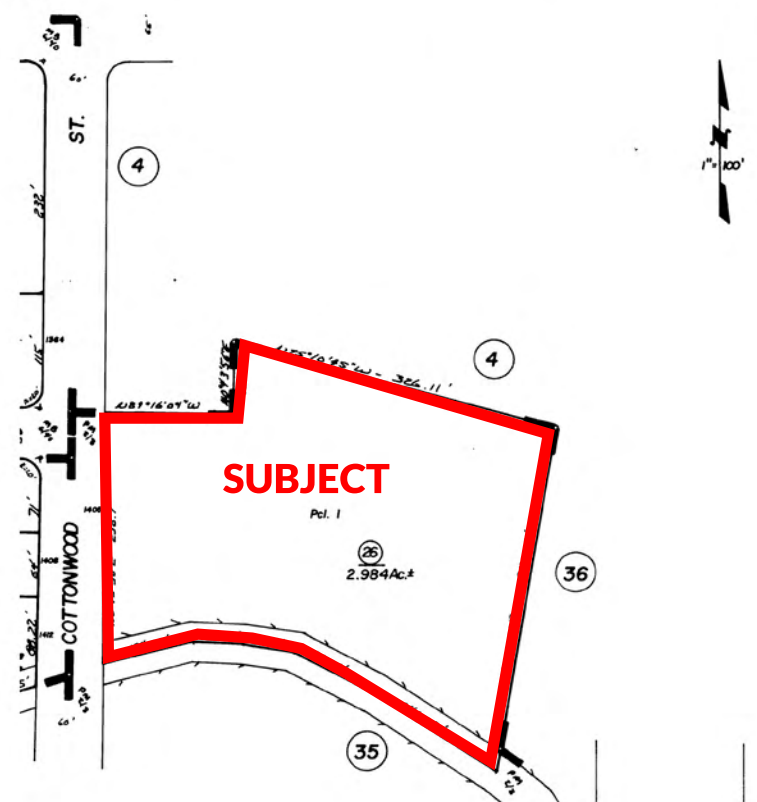


# 1405 COTTONWOOD STREET WOODLAND, CALIFORNIA

R 2E, M.D.B & M.

CAUTION - These maps ARE NOT to be used for legal descriptions.

39-01



## YOLO COUNTY ASSESSOR'S PARCEL NUMBER 039-010-026

### SIZE DISCLAIMER:

The Assessor acreage measurements are approximate only.  
The use of approximate acreage figures does not mean  
that more accurate measurements, or a survey, do not exist.





# CHURCH FOR SALE

1405 COTTONWOOD STREET  
WOODLAND, CALIFORNIA

**ASKING PRICE: \$2,520,000**

## THE OPPORTUNITY

This property represents a rare opportunity to obtain a well located, and well maintained, facility in the highly desirable community of Woodland, California. The site is positioned for continued use as a church facility or alternative re-use possibilities given the strong area demographics and its in-fill location.

## THE PROPERTY

- ±18,578 Square Foot Facility
- ±136 Parking Stalls (does not include on street parking)
- ±2.98 Acres of Land Area
- Zoned RL - Low Density Residential - Maximum of 8 Dwelling Units Per Acre (City of Woodland)

## THE POSSIBILITIES

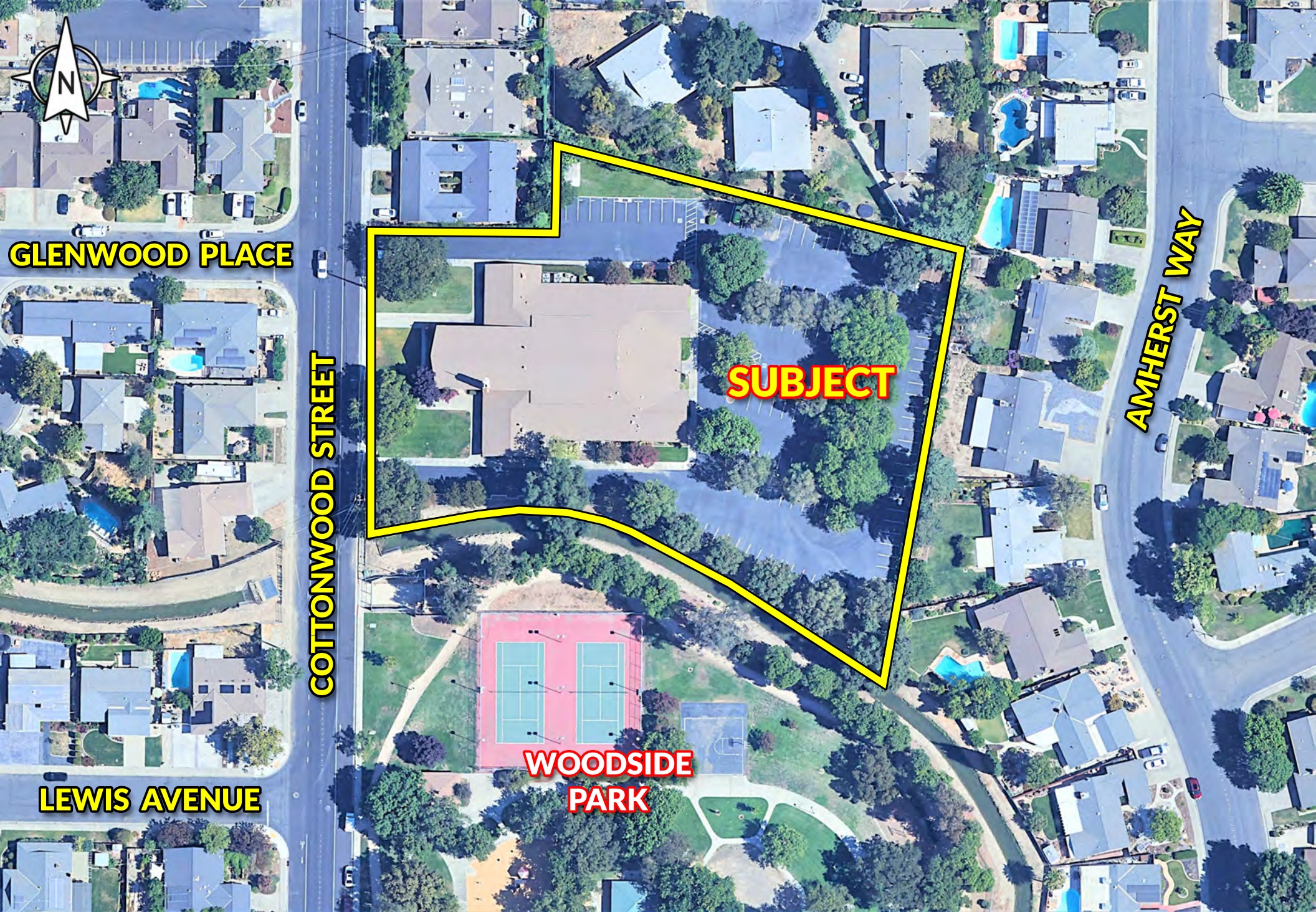
- Affordable Housing Redevelopment
- Childcare Center
- Charter School / Private School
- Community Center
- Multifamily Redevelopment
- Nonprofit Headquarters
- Professional Offices
- Professional or Vocational Training
- Public/Quasi-Public Uses
- Religious Assembly
- Residential Care Facility
- Senior Housing Redevelopment

Note: All uses are subject to discretionary governmental approval, which cannot be guaranteed. Some listed uses would require rezones, use permits and/or other entitlements, which may not occur.

**This information has been obtained from sources believed reliable, but has not been verified for accuracy or completeness. You should conduct a careful, independent investigation of the property and verify all information.**







**1405 COTTONWOOD STREET**  
**WOODLAND, CALIFORNIA**





# FLOOR PLAN MAP





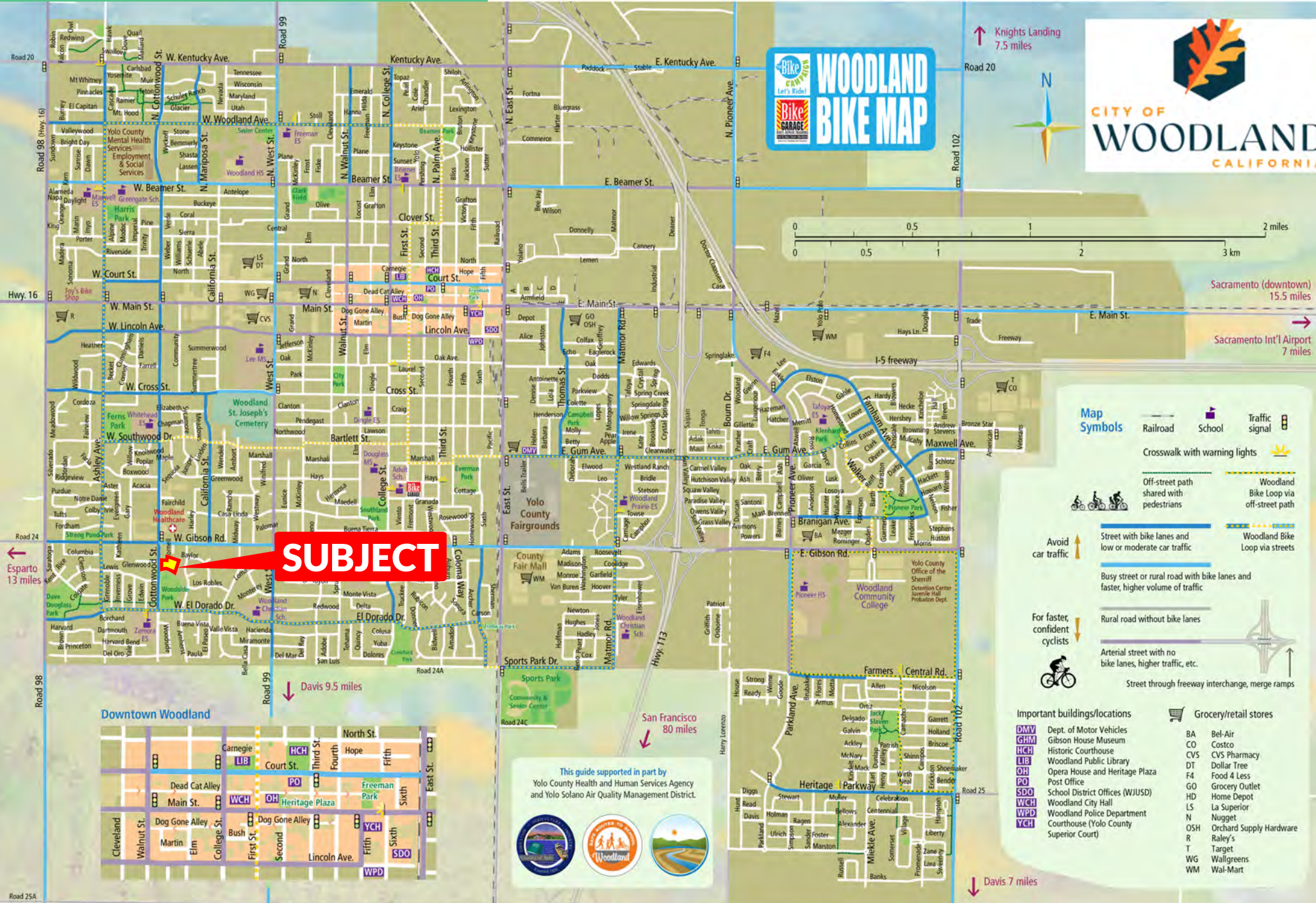
# 1405 COTTONWOOD STREET WOODLAND, CALIFORNIA





1405 COTTONWOOD STREET  
WOODLAND, CALIFORNIA

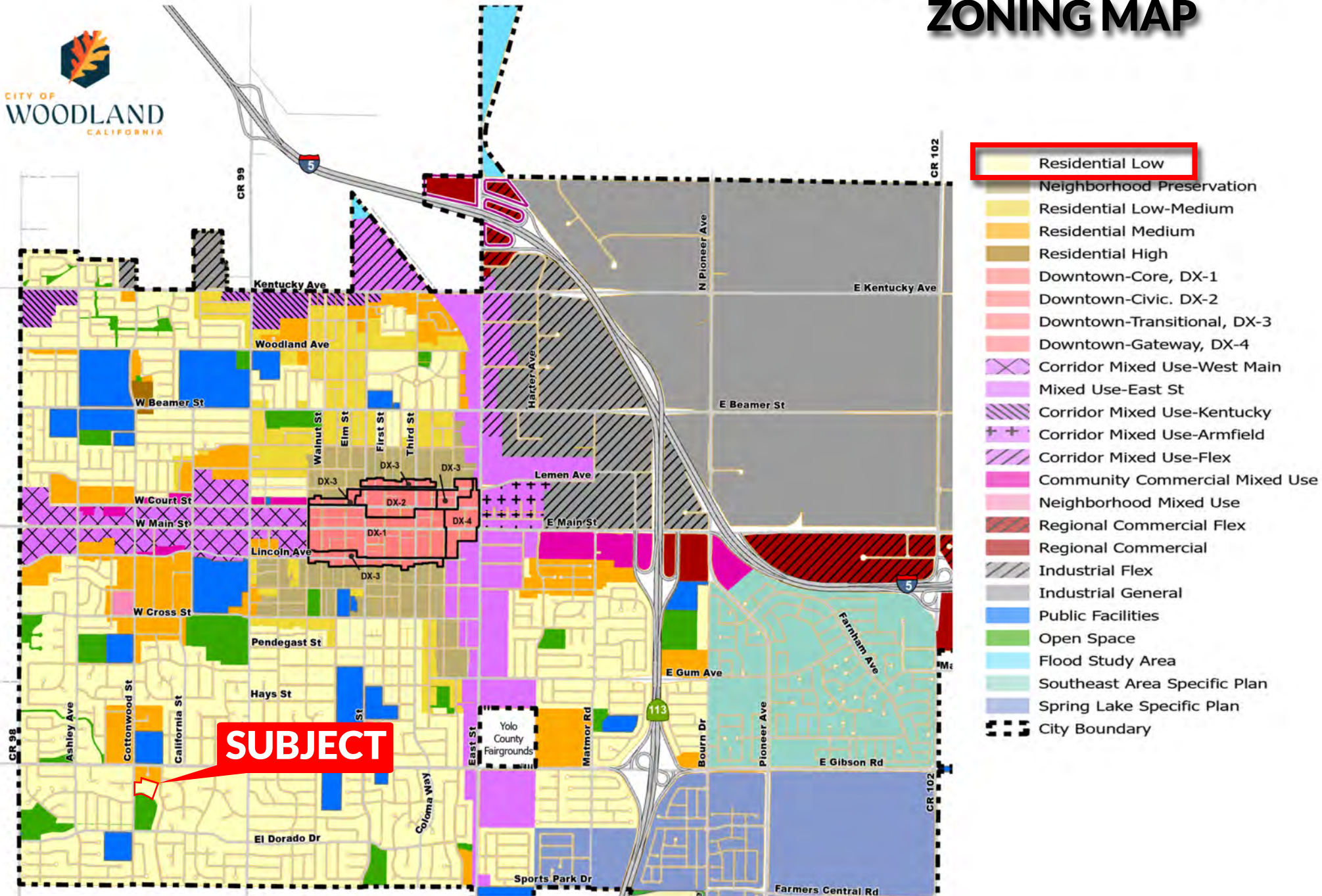
CITY OF WOODLAND  
BIKE MAP





**1405 COTTONWOOD STREET**  
**WOODLAND, CALIFORNIA**

**CITY OF WOODLAND**  
**ZONING MAP**



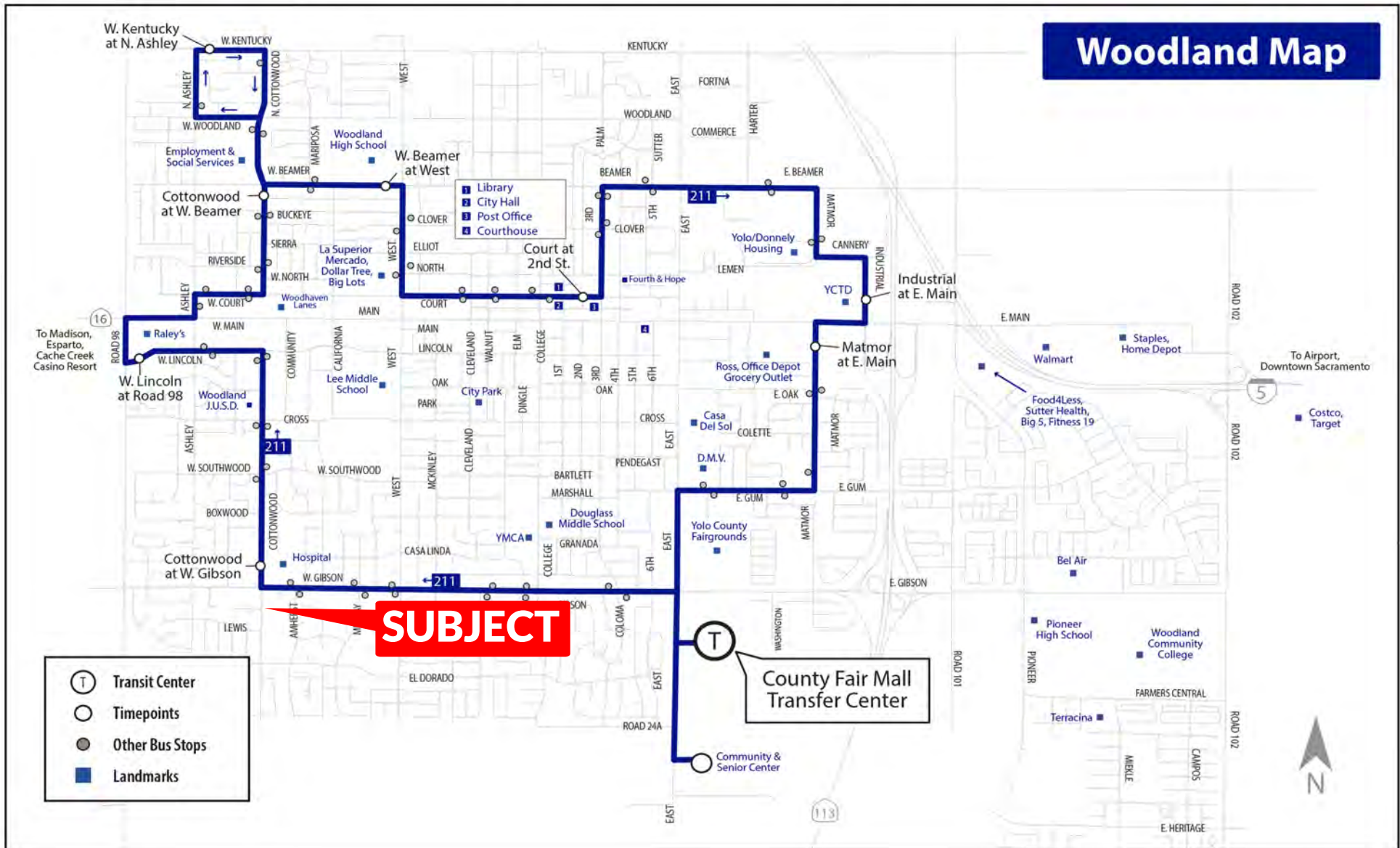


# CITY OF WOODLAND PUBLIC TRANSPORTATION

# Yolobus

## West Woodland Local

## Woodland Map





**1405 COTTONWOOD STREET**  
**WOODLAND, CALIFORNIA**



**YOLO  
COUNTY  
FAIRGROUNDS**

**EAST STREET**

**DOUGLAS  
MIDDLE  
SCHOOL**

**GIBSON  
ELEMENTARY  
SCHOOL**

**HOLY ROSARY  
CATHOLIC  
HIGH SCHOOL**

**WOODLAND**

**WEST GIBSON ROAD**

**WOODLAND  
MEMORIAL  
HOSPITAL**

**SUBJECT**

**COTTONWOOD STREET**

**WOODSIDE  
PARK**





**1405 COTTONWOOD STREET**  
**WOODLAND, CALIFORNIA**

**±18,578 SQUARE FOOT FACILITY**  
**±2.98 ACRE PARCEL**

**FOR  
SALE**



**Peter Nixon**  
**916 259 4453**  
[peter.nixon@newcastlepg.com](mailto:peter.nixon@newcastlepg.com)  
**Lic. 00975548**

**Kris Riley**  
**916 259 4454**  
[kris.riley@newcastlepg.com](mailto:kris.riley@newcastlepg.com)  
**Lic. 01290492**



This information has been obtained from sources believed reliable, but has not been verified for accuracy or completeness. You should conduct a careful, independent investigation of the property and verify all information. Any reliance on this information is solely at your own risk. Newcastle Properties Group and the Newcastle Properties Group logo are service marks of Newcastle Properties Group. All other marks displayed on this document are the property of their respective owners, and the use of such logos does not imply any affiliation with or endorsement of Newcastle Properties Group. Photos herein are the property of their respective owners. Use of these images without the express written consent of the owner is prohibited.