

Medical / Standard Office Space For Lease

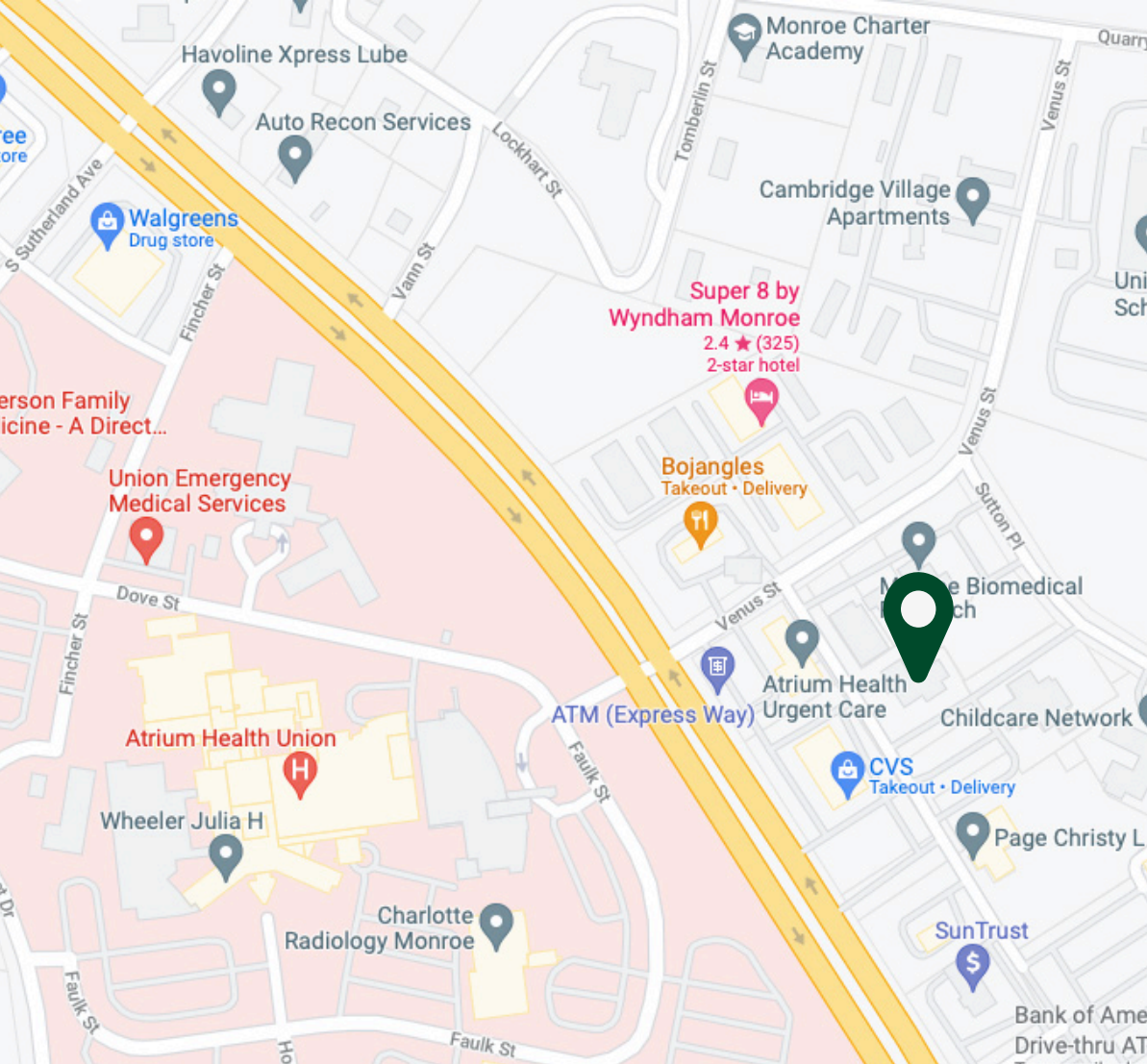
Multi Tenant Building

Up to +/- 3,000 RSF Available

701 E. Roosevelt
Boulevard, Building 200
Monroe, NC 28112



Isaac Harrow
Broker
O: 704.882.1700 ext. 220
M: 828.320.1986
iharrow@themosergroupinc.com



Building Highlights

Property Address 701 E. Roosevelt Boulevard, Building 200
Monroe, NC 28112

Available Space Up to +/- 3,000 RSF
(Can subdivide)

Submarket Union County

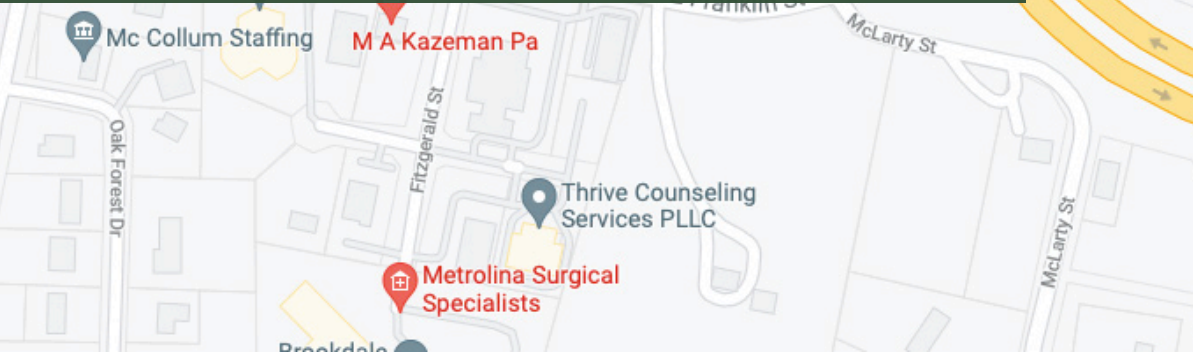
Parcel ID 09156015B

Located across from the Atrium Union Hospital in Monroe in an existing Medical Park

Demographics

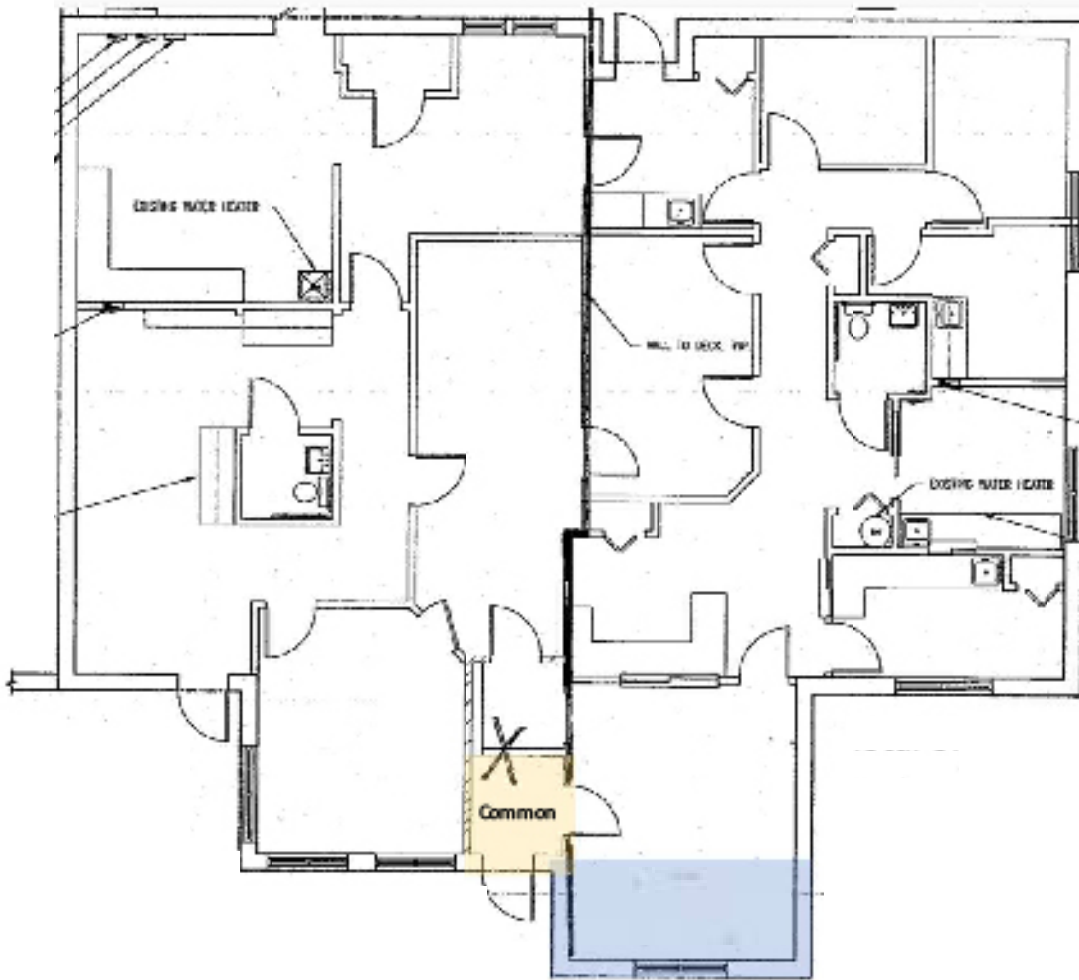
	3 Mile	5 Mile	10 Mile
Population	20,612	40,341	125,012
Households	6,730	13,571	42,138
Average HH Income	\$47,974	\$72,881	\$90,065

Medical / Standard Office | For Lease



\$19.50/SF

Floorplan





Krysta Bragg, FNP

Atrium Health Union

E Independence Blvd (74)

Camp Sutton
Historic Marke

Artium Pain
Management

Darst
Dermatology

Monroe
Biomedical
Research

Dr. Philip Igbinador
Dentistry

200A
Pinnacle
Dermatology

200B
Available space
(+/- 3,000 SF)

Daymark
Recovery Services

New 6,000 sqft Medical Building
Construction
beginning Fall 2023



Dr. Philip Igbinalolor
Dentistry

200A
Pinnacle Dermatology

Artium Pain
Management

Darnst
Dermatology

200B
Available space
(+/- 3,000 SF)

Monroe
Biomedical
Research

**Medical Park Zone
Renovation Scheduled
Summer 2023**

Daymark
Recovery Services



Up to +/- 3,000 RSF Office Space

Available for Lease



Isaac Harrow
Broker
O: 704.882.1700 ext 220
M: 828.320.1986
iharrow@themosergroupinc.com

701 E. Roosevelt Blvd.
Monroe, NC 28110