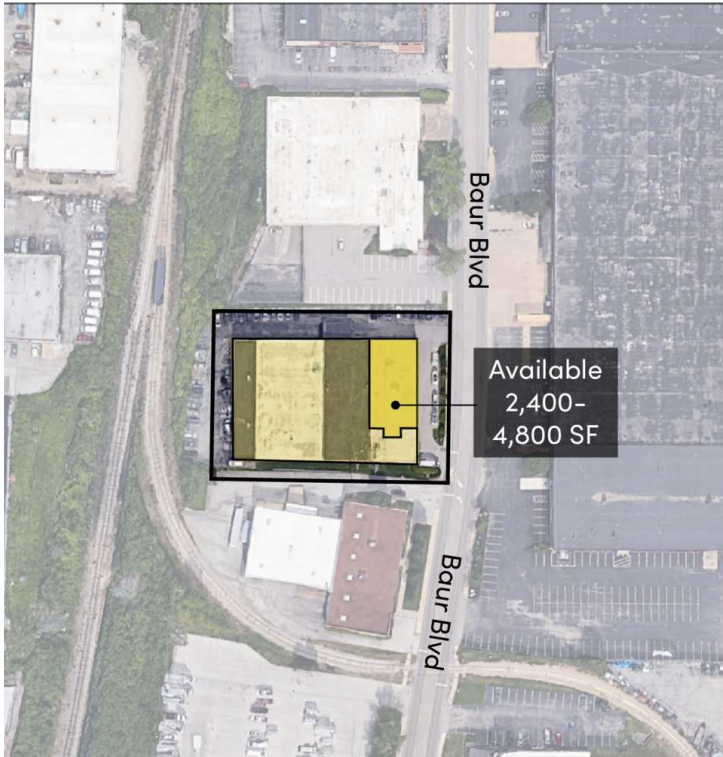


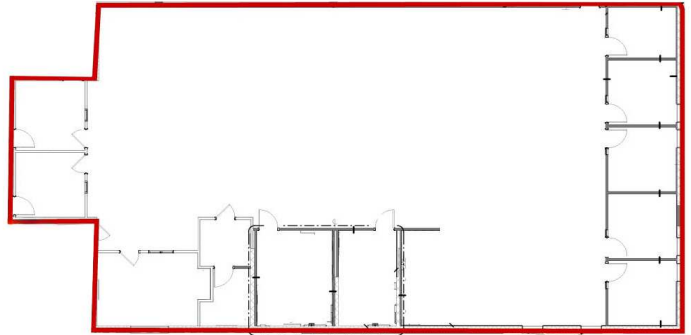
OFFICE FOR LEASE

10645 Baur Blvd | St. Louis, MO 63132



Floor Plan

2,400-4,800 SF Available



Property Highlights

- 2,400-4,800 SF Available For Lease
- Space Can Be Demised
- Turn Key Office Space
- Plug & Play, Furniture Included
- High Quality Office Finishes
- 5 Private Offices
- Conference Room
- Break Room Area
- Large Open Work Space
- Centrally Located: Direct Access to N Lindbergh Blvd and N Warson Rd

\$16.00 SF/YR
Full Service Less Janitorial



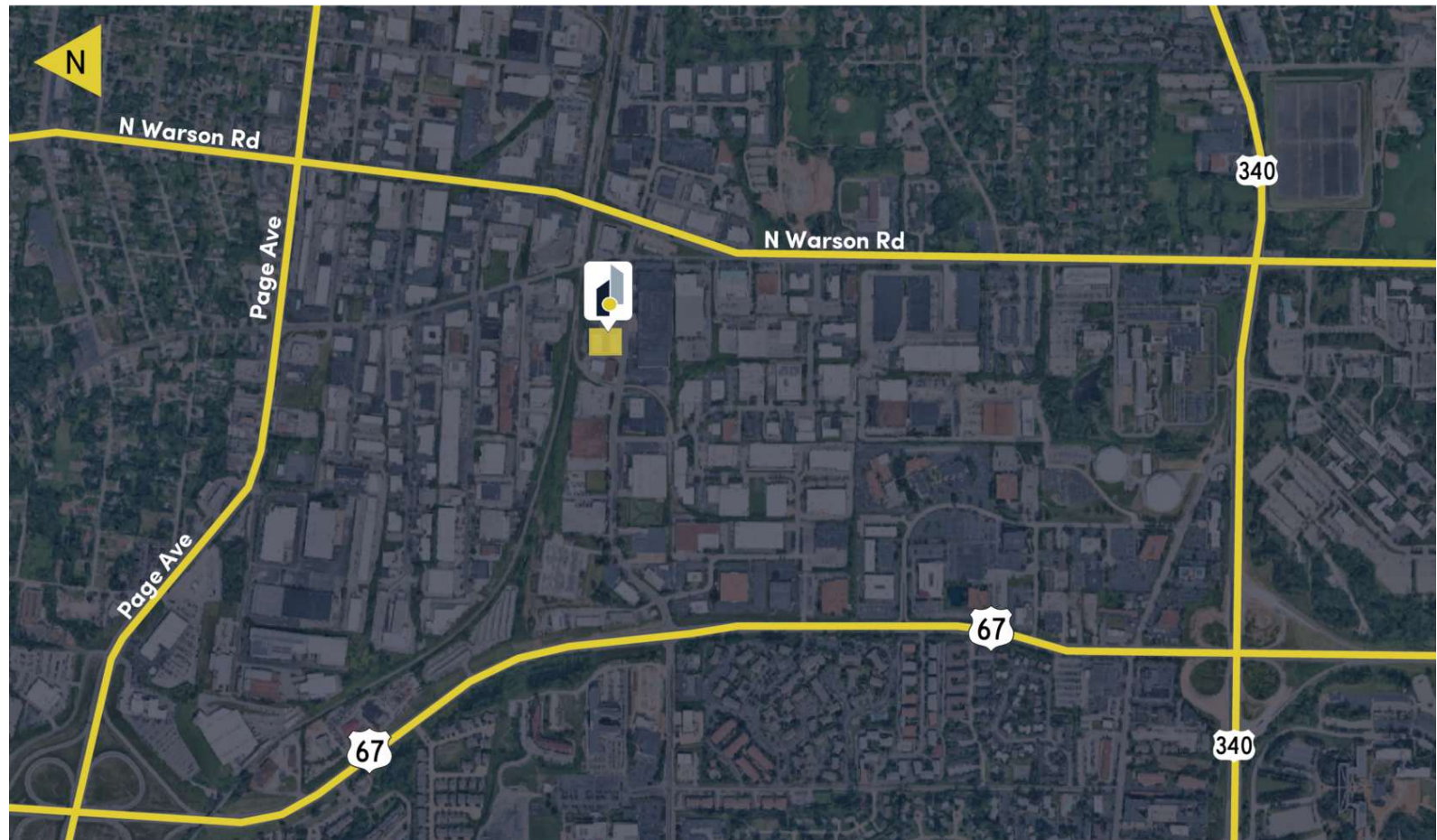
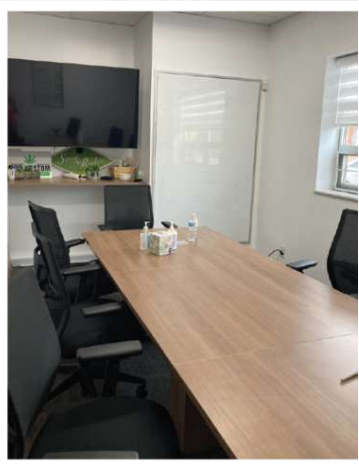
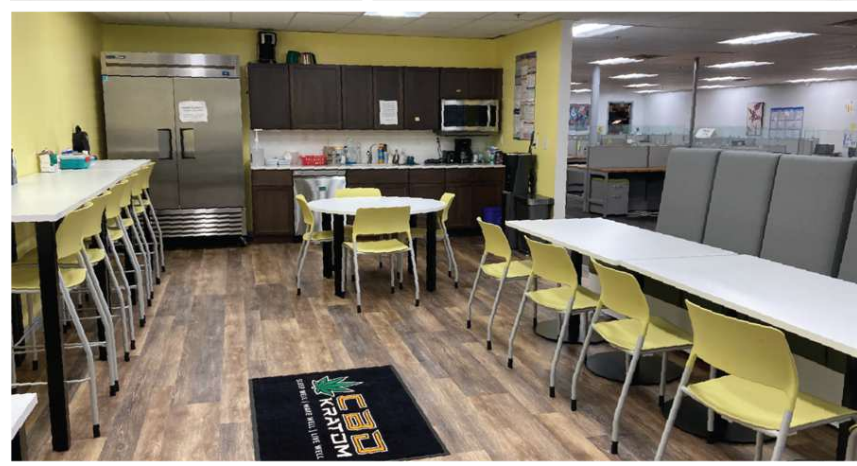
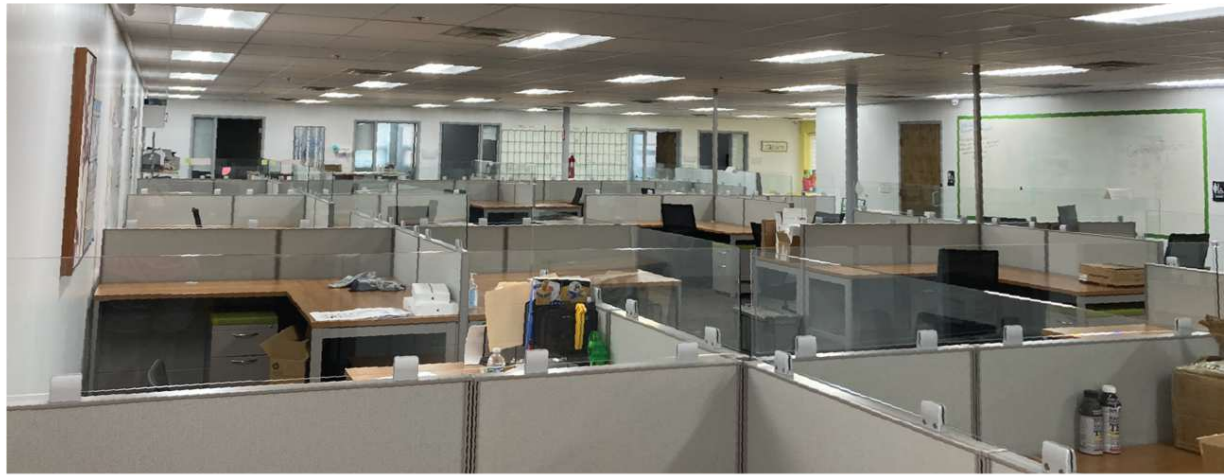
Drew Clary

Principal
(314) 744-8978
dclary@intcre.com



Benjamin Bacino

Associate | Brokerage
(314) 279-4060
bbacino@intcre.com



This information has been obtained from sources believed reliable but has not been verified for accuracy or completeness. You should conduct a careful, independent investigation of the property and verify all information. Any reliance on this information is solely at your own risk.

