

LEASE

HOPE PLAZA

454 Church Street Northeast Salem, OR 97301



PROPERTY DESCRIPTION

Discover a prime leasing opportunity at Hope Plaza. This impressive property offers a highly desirable location with excellent visibility and accessibility. Boasting modern architecture and ample space, it is perfectly suited for a variety of businesses looking to make their mark. The open layout and versatile floor plan provide the ideal blank canvas for creating a unique and inviting business space. With its prominent street frontage and convenient amenities, this property is an exceptional choice for those seeking a dynamic and thriving business location. Elevate your business at Hope Plaza.

PROPERTY HIGHLIGHTS

- New construction / First generation space
- Prime downtown location
- High visibility and accessibility
- Modern architecture and spacious layout
- Versatile floor plan for customization
- Prominent street frontage for maximum exposure
- Ideal for a variety of retail or office uses

OFFERING SUMMARY

Lease Rate:	\$1.75 SF/month (Full Service - Less janitorial, phone/data)
Number of Units Available:	1
Available SF:	Suite 140 - 570 SF
Lot Size:	1.01 Acres
Total Building Size:	7,268 SF

DEMOGRAPHICS	0.3 MILES	0.5 MILES	1 MILE
Total Households	323	1,242	4,913
Total Population	636	3,547	12,806
Average HH Income	\$127,133	\$80,799	\$71,645

Jeff Miller
(503) 999-5210



COLDWELL BANKER
COMMERCIAL
MOUNTAIN WEST
REAL ESTATE

LEASE

HOPE PLAZA

454 Church Street Northeast Salem, OR 97301



Jeff Miller
(503) 999-5210



**COLDWELL BANKER
COMMERCIAL**
MOUNTAIN WEST
REAL ESTATE

©2022 Coldwell Banker. All Rights Reserved. Coldwell Banker and the Coldwell Banker Commercial logos are trademarks of Coldwell Banker Real Estate LLC. The Coldwell Banker® System is comprised of company owned offices which are owned by a subsidiary of Realty Brokerage Group LLC and franchised offices which are independently owned and operated. The Coldwell Banker System fully supports the principles of the Equal Opportunity Act. Each office is independently owned and operated. The information provided is deemed reliable, but it is not guaranteed to be accurate or complete, and it should not be relied upon as such. This information should be independently verified before any person enters into a transaction based upon it.

LEASE

HOPE PLAZA

454 Church Street Northeast Salem, OR 97301



Jeff Miller
(503) 999-5210

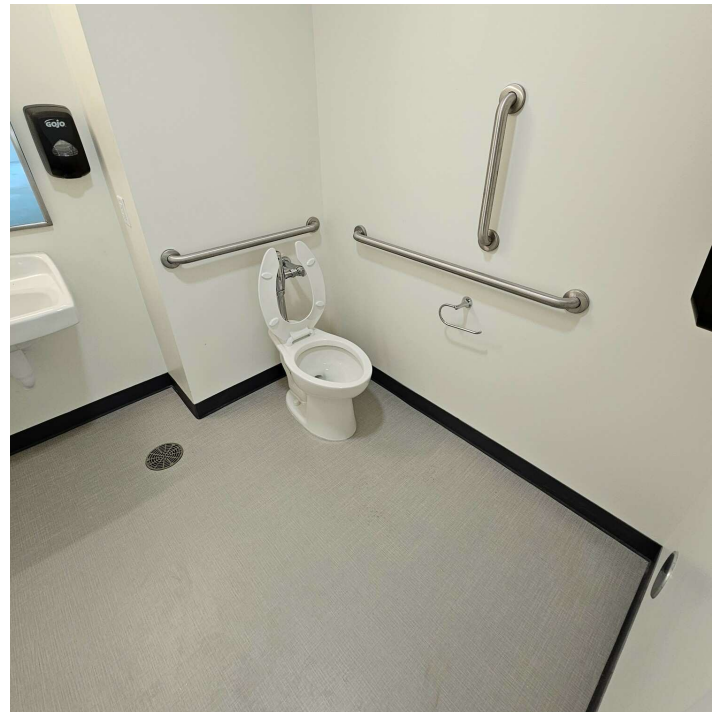


**COLDWELL BANKER
COMMERCIAL**
MOUNTAIN WEST
REAL ESTATE

LEASE

HOPE PLAZA

454 Church Street Northeast Salem, OR 97301



Jeff Miller
(503) 999-5210

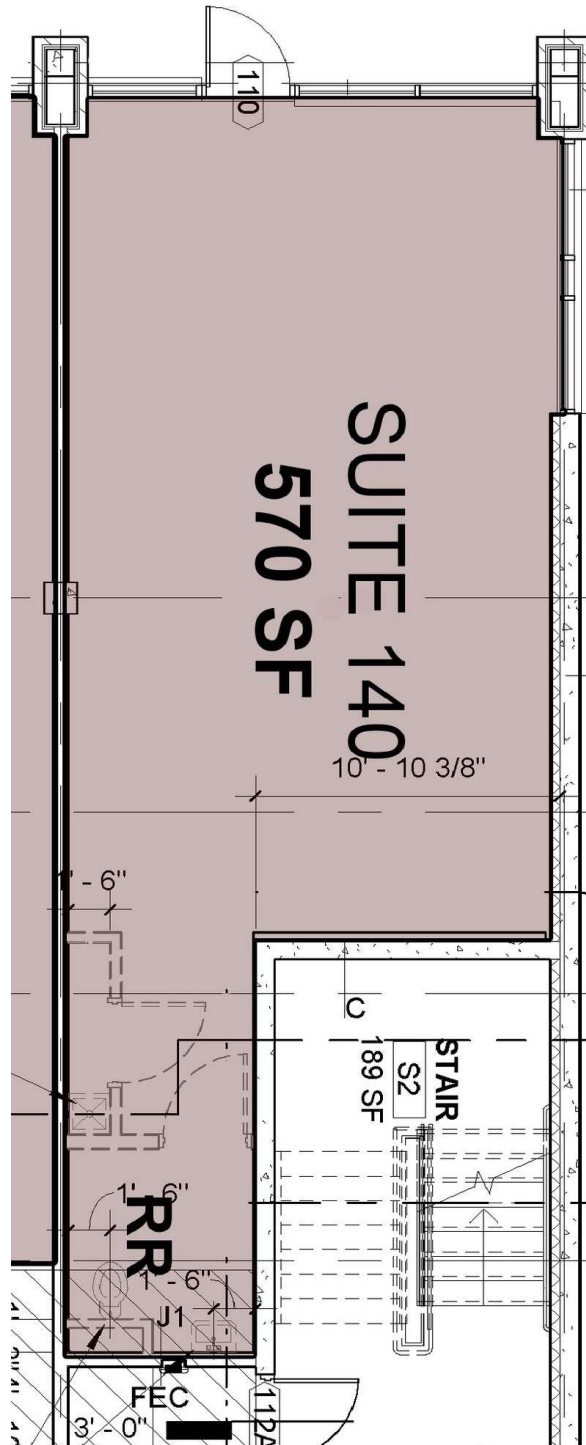


**COLDWELL BANKER
COMMERCIAL**
MOUNTAIN WEST
REAL ESTATE

LEASE

HOPE PLAZA

454 Church Street Northeast Salem, OR 97301



Jeff Miller
(503) 999-5210

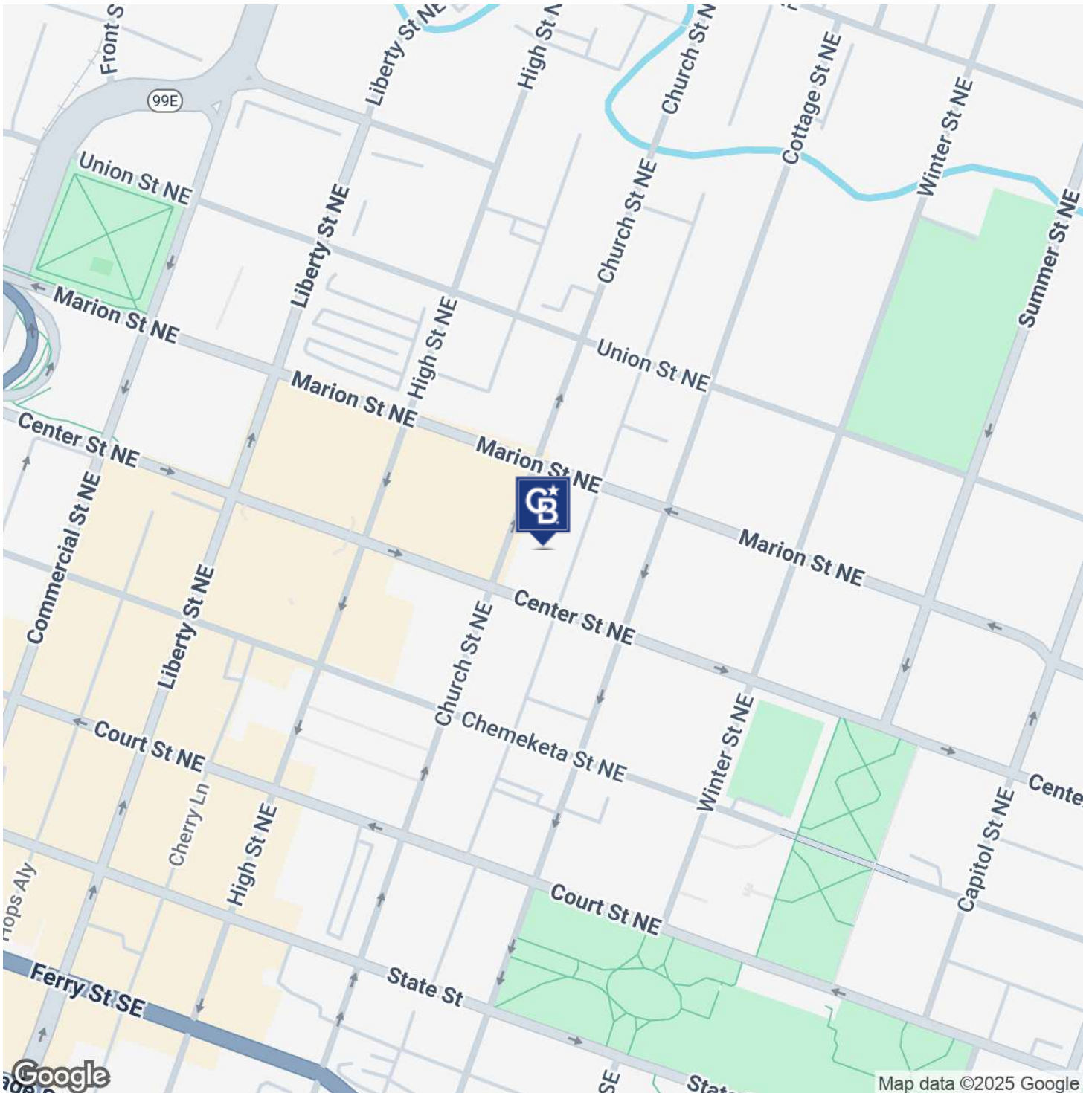


**COLDWELL BANKER
COMMERCIAL**
MOUNTAIN WEST
REAL ESTATE

LEASE

HOPE PLAZA

454 Church Street Northeast Salem, OR 97301



Jeff Miller
(503) 999-5210

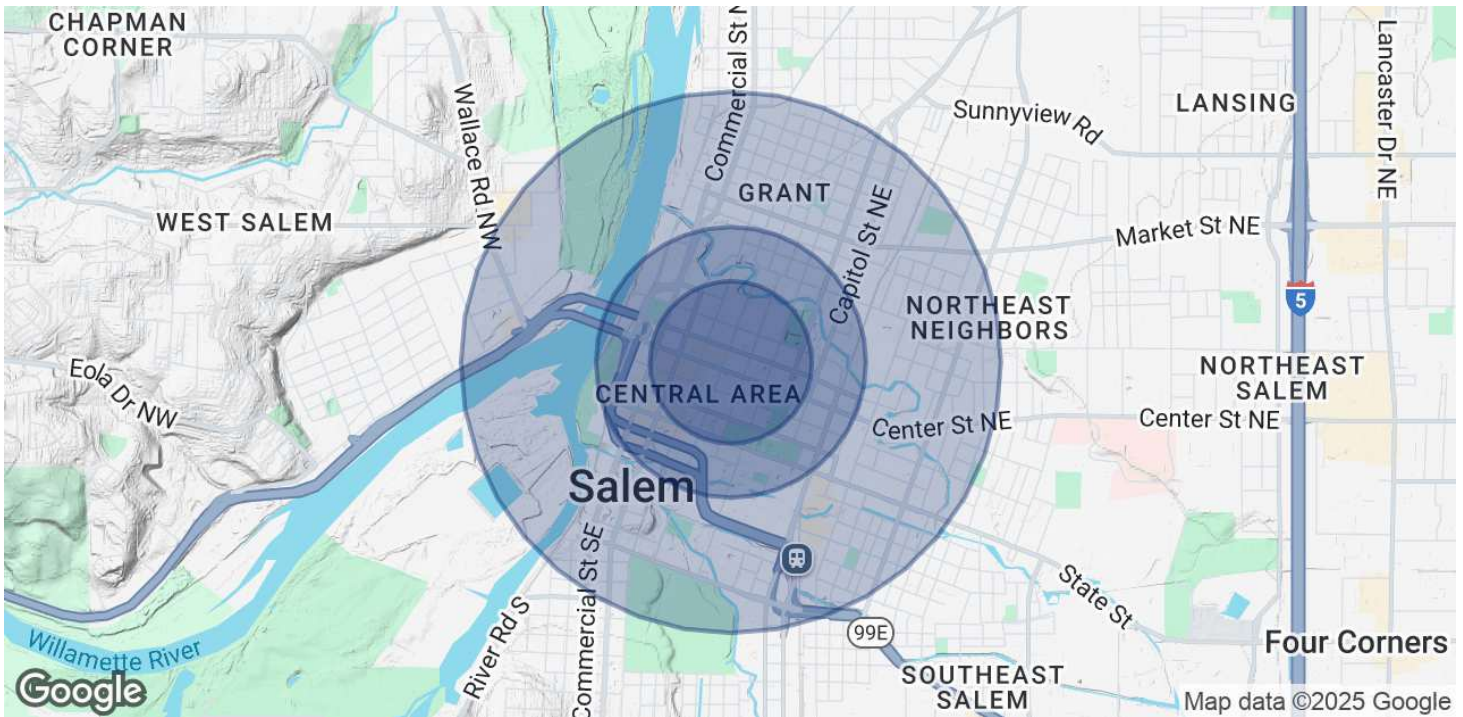


**COLDWELL BANKER
COMMERCIAL**
MOUNTAIN WEST
REAL ESTATE

LEASE

HOPE PLAZA

454 Church Street Northeast Salem, OR 97301



POPULATION

	0.3 MILES	0.5 MILES	1 MILE
Total Population	636	3,547	12,806
Average Age	42	36	37
Average Age (Male)	43	36	37
Average Age (Female)	41	36	38

HOUSEHOLDS & INCOME

	0.3 MILES	0.5 MILES	1 MILE
Total Households	323	1,242	4,913
# of Persons per HH	2	2.9	2.6
Average HH Income	\$127,133	\$80,799	\$71,645
Average House Value	\$371,452	\$376,649	\$360,465

Demographics data derived from AlphaMap

Jeff Miller
(503) 999-5210



**COLDWELL BANKER
COMMERCIAL**
MOUNTAIN WEST
REAL ESTATE