



16710 VENTURA BLVD. ENCINO, CA 91436

**RETAIL SPACES AVAILABLE**



OFFERING MEMORANDUM





## ● SITE DESCRIPTION

IKON Properties is proud to present a mixed-use retail property in prime Encino, located directly across from Mercedes-Benz Encino. This highly visible opportunity is ready to be tailored to fit your business, offering the perfect setting for retail, showroom, or service concepts.

The property features assisted valet parking, a strong tenant mix, and sits below 152 luxury apartment units, providing a built-in customer base and consistent foot traffic.

This is a rare chance to secure space in one of Encino's most sought-after corridors, surrounded by affluent demographics and established neighboring brands.



# FOR LEASE



PROPERTY TYPE  
Retail

AVAILABLE SPACES  
1,297 SF - 3,925 SF

UNITS AVAILABLE  
3 Units



# PROPERTY HIGHLIGHTS

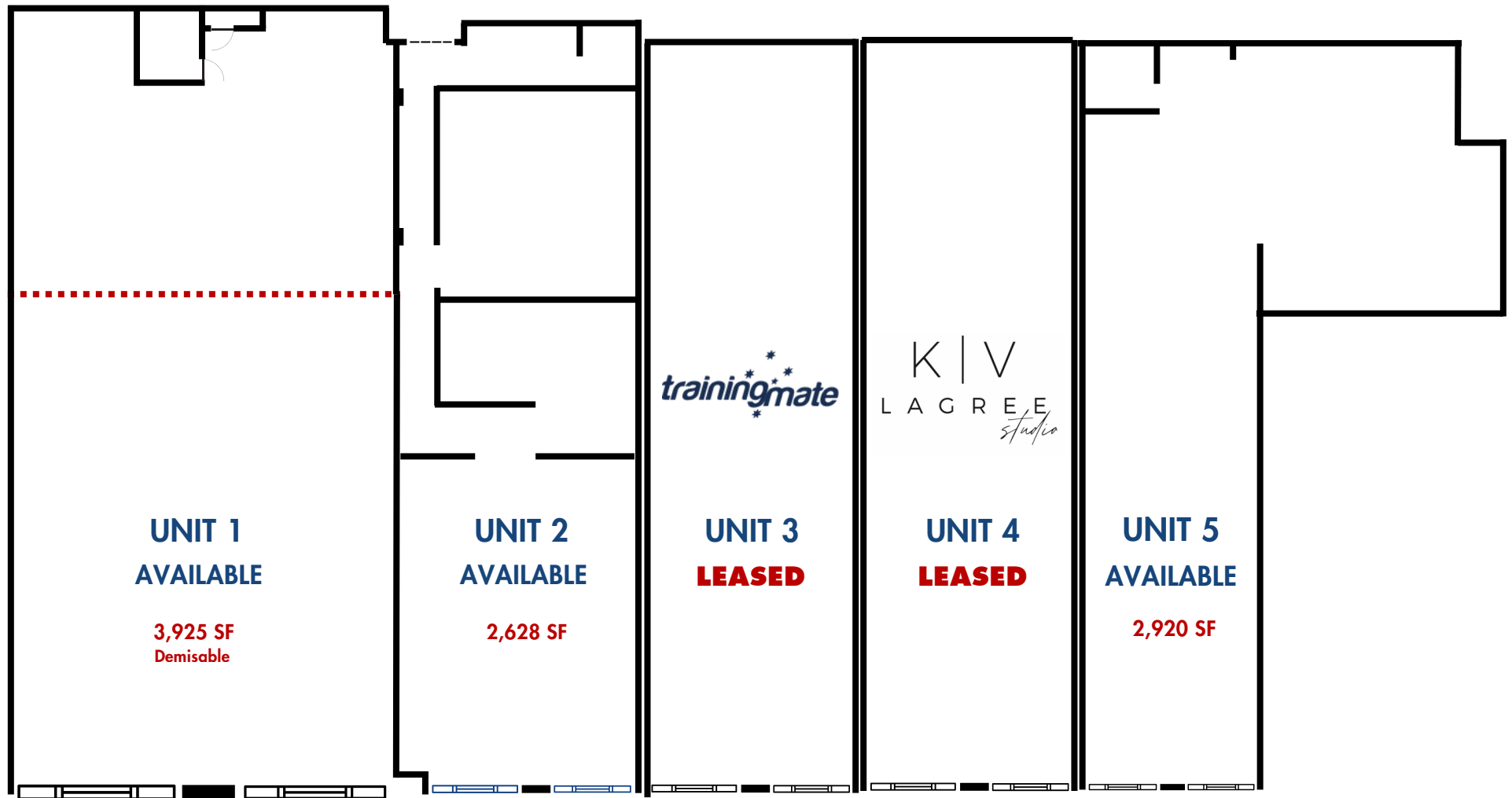
- Prime Encino Location, Directly Across Mercedes-Benz
- Luxurious Mixed-Use Retail
- Convenient Assisted Valet Service
- 152 Luxury Units Above, Providing Daily Foot Traffic
- Ideal for Food, Retail & Service Uses
- Potential Patio Opportunities





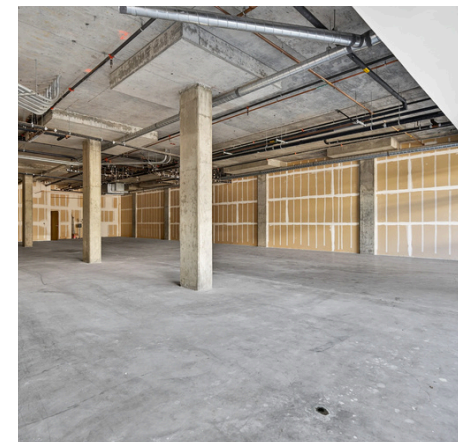
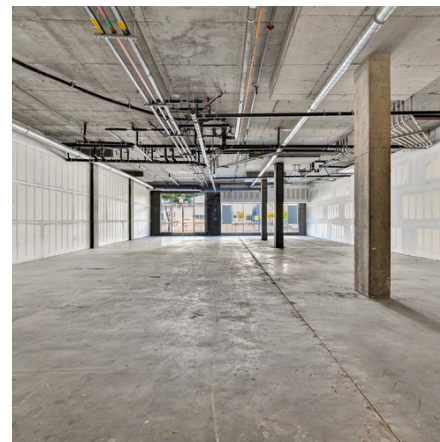
# FLOOR PLAN

Measurements are deemed highly reliable but not guaranteed.

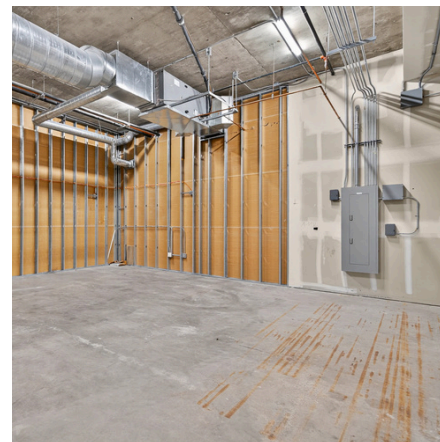


**VENTURA BLVD**

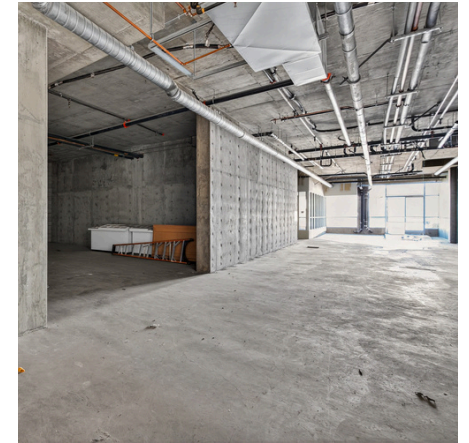
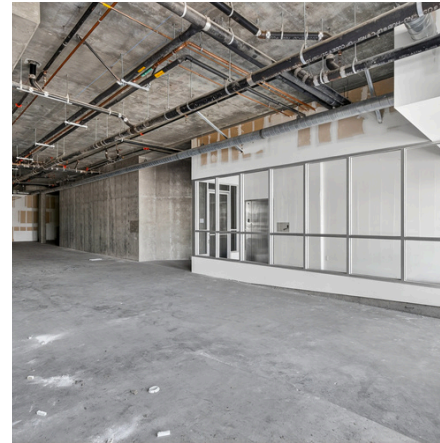






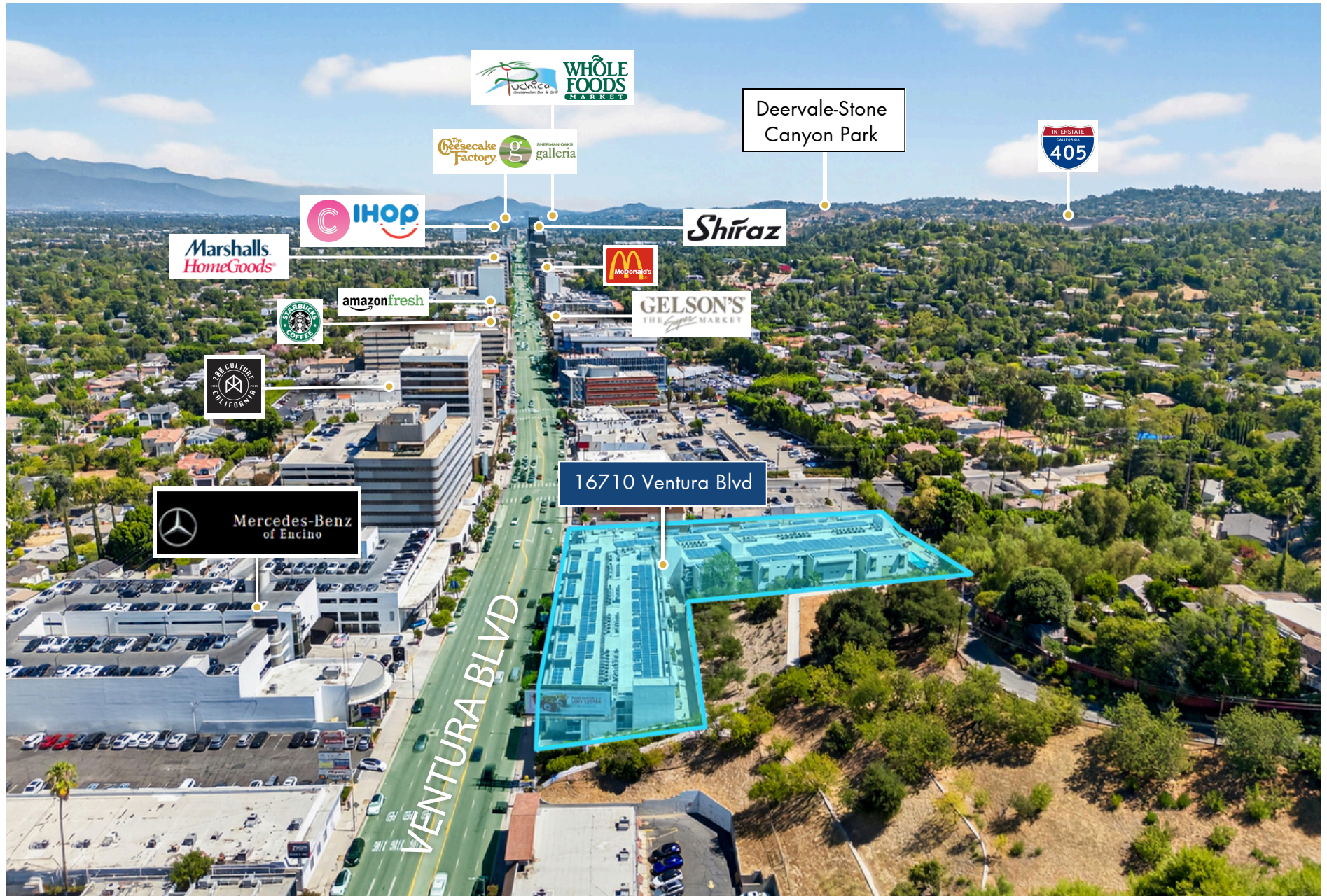








# RETAIL MAP



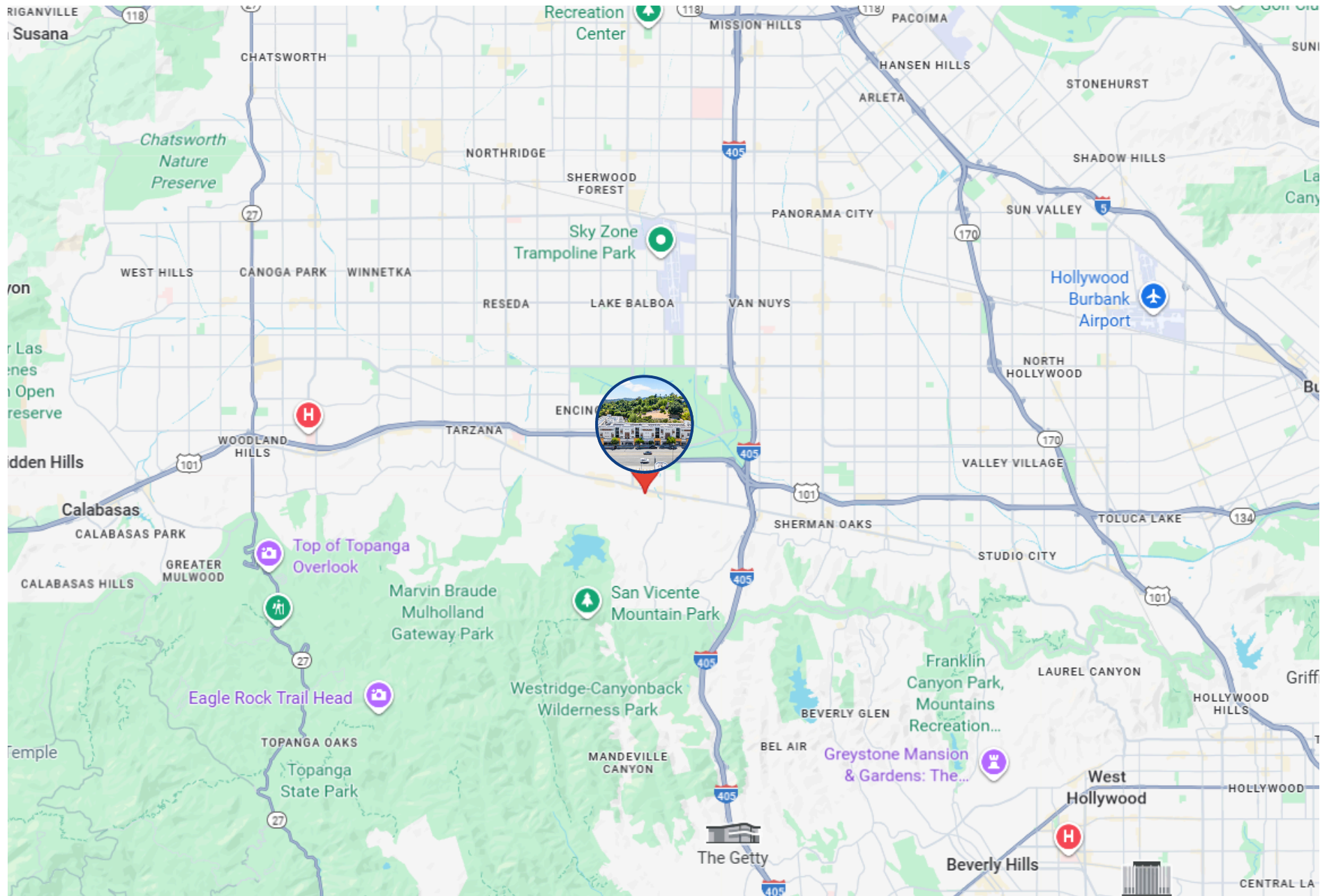


LOCATED ALONG THE SOUTH SIDE OF  
VENTURA BOULEVARD NEAR THE  
INTERSECTION OF VENTURA BOULEVARD AND  
BALBOA BOULEVARD, IN THE HEART OF  
ENCINO'S VIBRANT COMMERCIAL CORRIDOR  
WITHIN THE SAN FERNANDO VALLEY





# LOCATION MAP







Category	1 Mile	3 Mile	5 Mile
2024 Total Population	11,296	147,091	439,133
2029 Population	10,973	143,246	427,534
Pop Growth 2024-2029	-2.86%	-2.61%	-2.64%
Average Age	44.50	41.30	40.30
2024 Total Households	4,423	59,143	161,036
HH Growth 2024-2029	-3.12%	-2.85%	-2.88%
Median Household Income	\$131,454	\$89,656	\$80,133
Avg Household Size	2.50	2.40	2.60
2024 Avg HH Vehicles	2	2	2
Median Home Value	\$1,108,721	\$959,930	\$887,478
Median Year Built	1964	1969	1968





The information contained in the following listing is proprietary and strictly confidential. It is intended to be reviewed only by the party receiving it from IKON Properties and it should not be made available to any other person or entity without the written consent of IKON Properties. By taking possession of and reviewing the information contained herein the recipient agrees to hold and treat all such information in the strictest confidence. The recipient further agrees that the recipient will not photocopy or duplicate any part of the email content. If you have no interest in the subject property, please promptly delete this email. This email has been prepared to provide summary, unverified financial and physical information to prospective purchasers, and to establish only a preliminary level of interest in the subject property. The information contained herein is not a substitute for a thorough due diligence investigation. IKON Properties has not made any investigation, and makes no warranty or representation with respect to the income or expenses for the subject property, the future projected financial performance of the property, the size and square footage of the property and improvements, the presence or absence of contaminating substances, PCBs or asbestos, the compliance with local, state and federal regulations, the physical condition of the improvements thereon, or financial condition or business prospects of any tenant, or any tenant's plans or intentions to continue its occupancy of the subject property. The information contained in this offering memorandum has been obtained from sources we believe are reliable; however, IKON Properties has not verified, and will not verify, any of the information contained herein, nor has IKON Properties conducted any investigation regarding these matters and makes no warranty or representation whatsoever regarding the accuracy or completeness of the information provided. All potential buyers must take appropriate measures to verify all of the information set forth herein. Prospective buyers shall be responsible for their costs and expenses of investigating the subject property.







**BLAS FERNANDEZ**  
DIRECTOR, COMMERCIAL INVESTMENTS

818.319.9191  
blas@ikonpropertiesla.com  
ikonpropertiesla.com  
LIC NO. 02012036



**JAMES VANIAN**  
INVESTMENT ASSOCIATE

818.262.6065  
james@ikonpropertiesla.com  
ikonpropertiesla.com  
LIC NO. 02085069