

219 WEST 14TH STREET

BETWEEN 7TH & 8TH AVENUES | CHELSEA



219 WEST 14TH STREET

BETWEEN 7TH & 8TH AVENUES | CHELSEA

PROPERTY DETAILS

SIZE: 1,100 SF Ground Floor
~200 SF Storage Basement

FRONTAGE: 15'

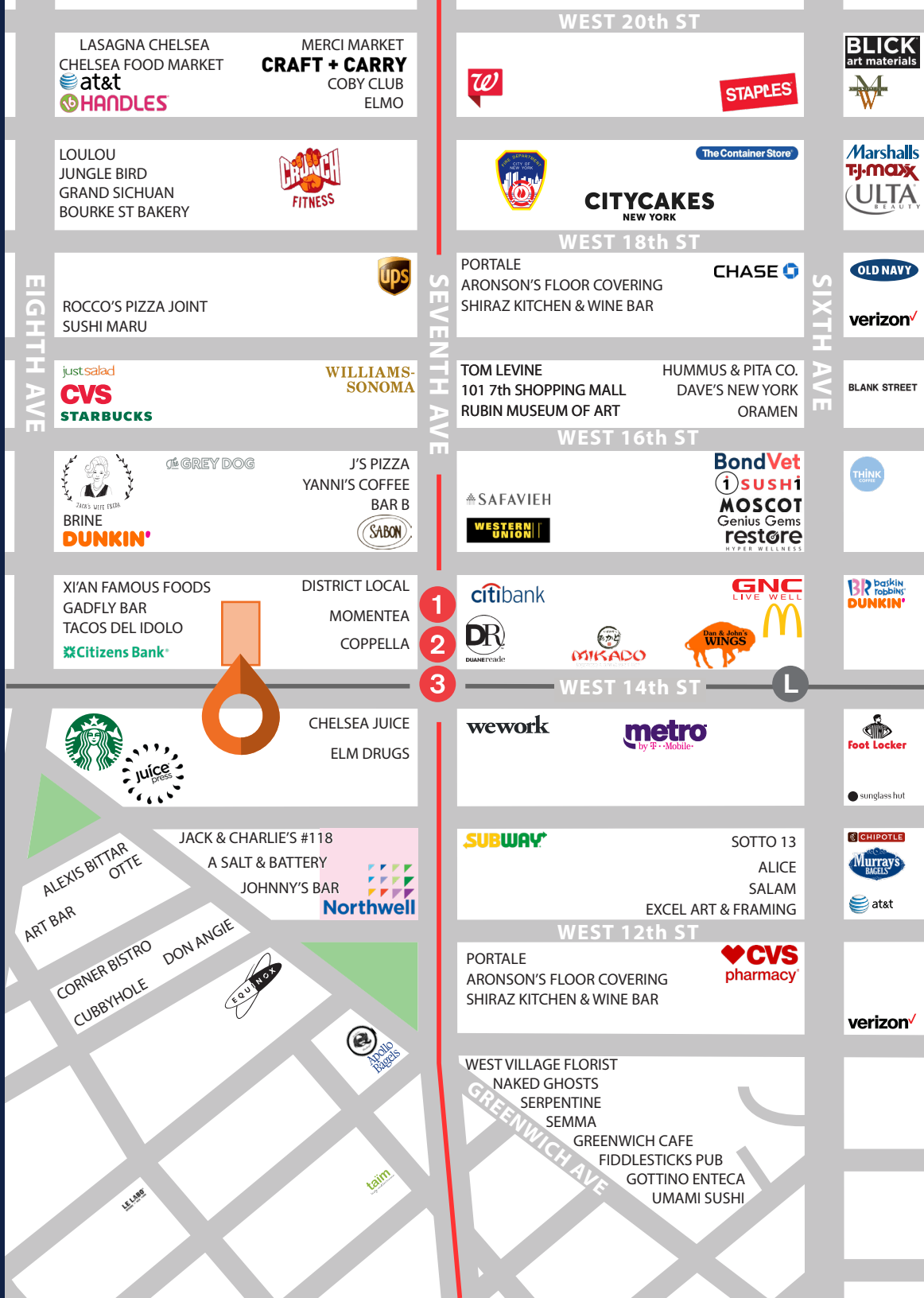
CEILING HEIGHT: 10'

POSSESSION: Immediate

TRANSPORTATION: 1 2 3 A C E L

HIGHLIGHTS

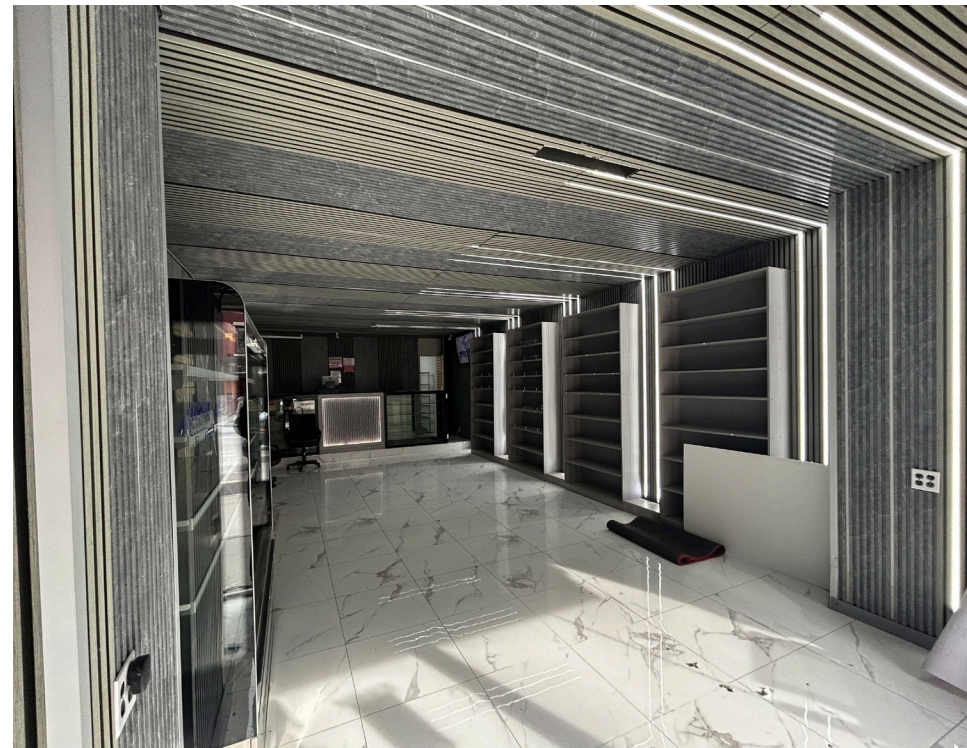
- Formerly *Chelsea Organics*
- High foot traffic area
- Dense residential neighborhood
- Neighboring tenants include:
Starbucks, Chase Bank, Bank of America, Citi Bank, Duane Reade (Walgreens), CVS Pharmacy, The UPS Store, The Vitamin Shoppe, Whole Foods Market, Trader Joe's, Target, TJ Maxx, & more!



219 WEST 14TH STREET

BETWEEN 7TH & 8TH AVENUES | CHELSEA

INTERIORS:



All information supplied in this marketing presentation and/or flyer is from sources deemed reliable and is furnished subject to errors, omissions, modifications, removal of listings from sale/lease and to any listing condition. Any square footage, dimensions, floor plans and/or technical data set forth are approximations and are subject to further elaboration/confirmation.

219 WEST 14TH STREET

BETWEEN 7TH & 8TH AVENUES | CHELSEA

FOR MORE INFORMATION,
PLEASE CONTACT:

HUNTER LAZAN

772.559.5195 | HLazan@ksrny.com

FREDDY SOUID

917.968.0329 | FSoud@ksrny.com

JACK KHASKI

917.355.0559 | JackK@ksrny.com

