



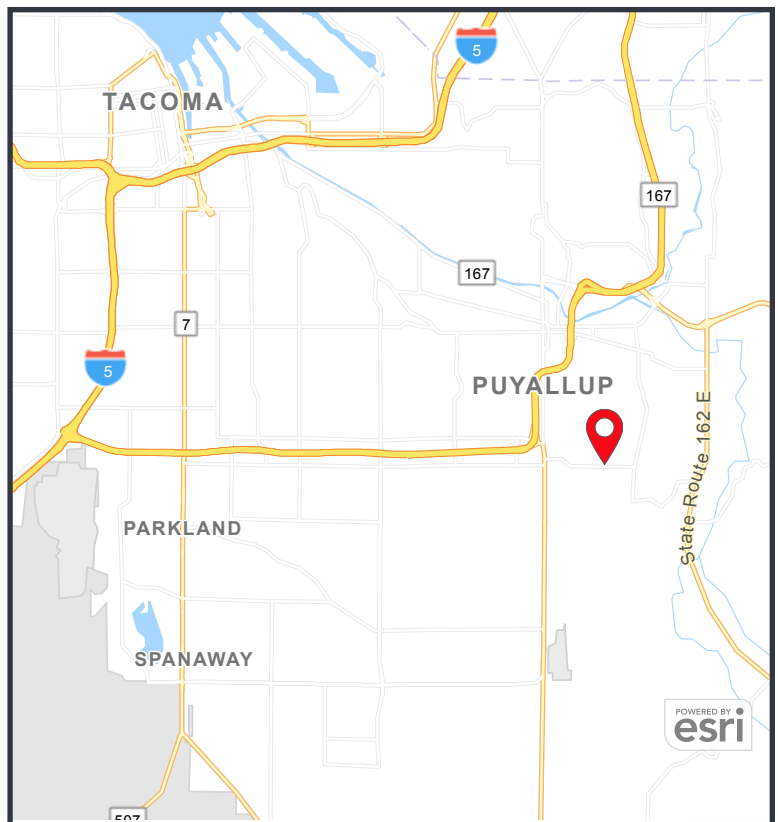
FOR SALE
\$2,100,000

 **SITE 5.16± ACRES**

- Land use and civil approvals for a 94,000 SF facility in place
- Zoned ML for a variety of retail & industrial uses (view code [Here](#))
- Sloped topography
- Surveys, Phase I, geotech, winter water, traffic, & other studies are in hand

 **LOCATION**

Surrounded by residential communities and commercial centers which provides a variety of development options. Broad retail/light industrial zoning uses. Site has excellent visibility on heavily traveled street just 1.5 miles from Highway 512. Average car counts exceed 17,500 vehicles.



CONTACT US



Garett Hall
Broker
360.259.8790
ghall@burrtemkin.com

Jim Kemmerer
Principal
425.837.1500
kemmerer@burrtemkin.com

380 Front Street South
Issaquah, WA 98027



This property is surrounded by residential communities and commercial centers which provides a strategic location for retail and industrial uses as supported by the property's broad zoning.

FOR SALE: \$2,100,000

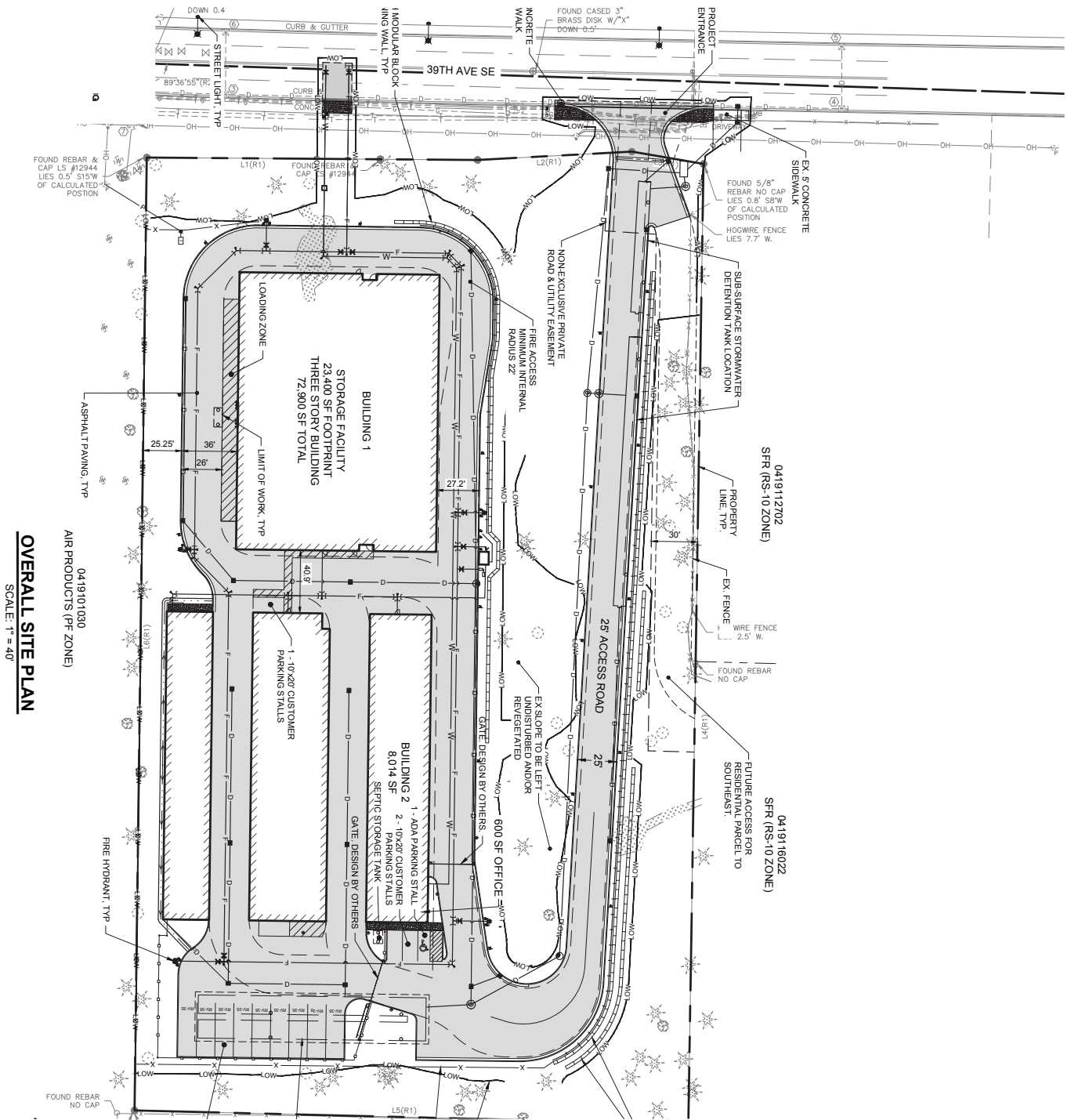
CONTACT US



Garett Hall
Broker
360.259.8790
ghall@burrtemkin.com

Jim Kemmerer
Principal
425.837.1500
kemmerer@burrtemkin.com

380 Front Street South
Issaquah, WA 98027



OVERALL SITE PLAN
SCALE: 1" = 40'

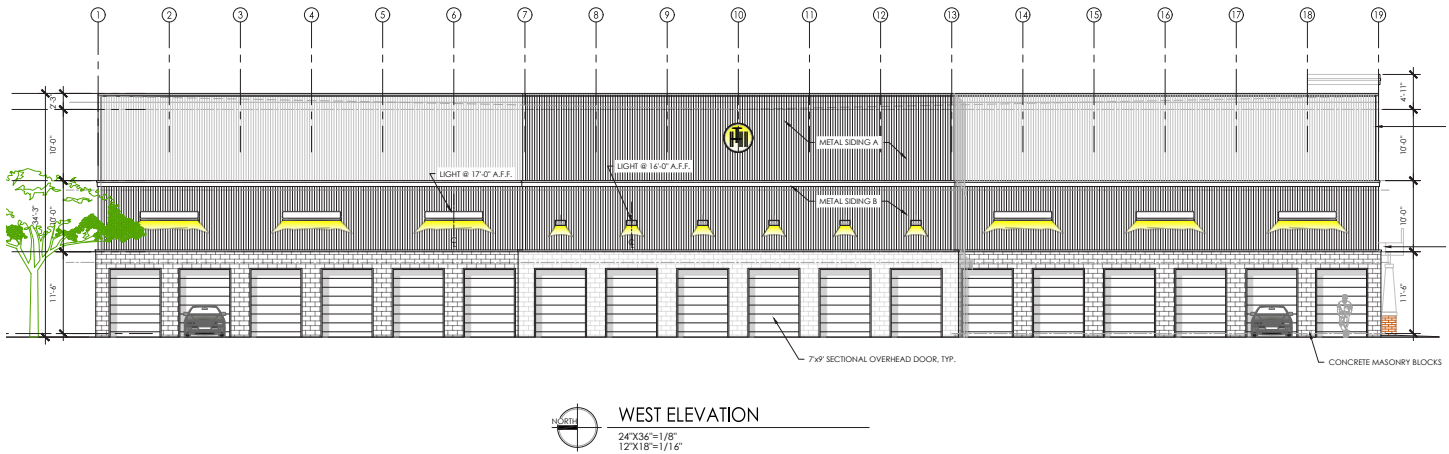
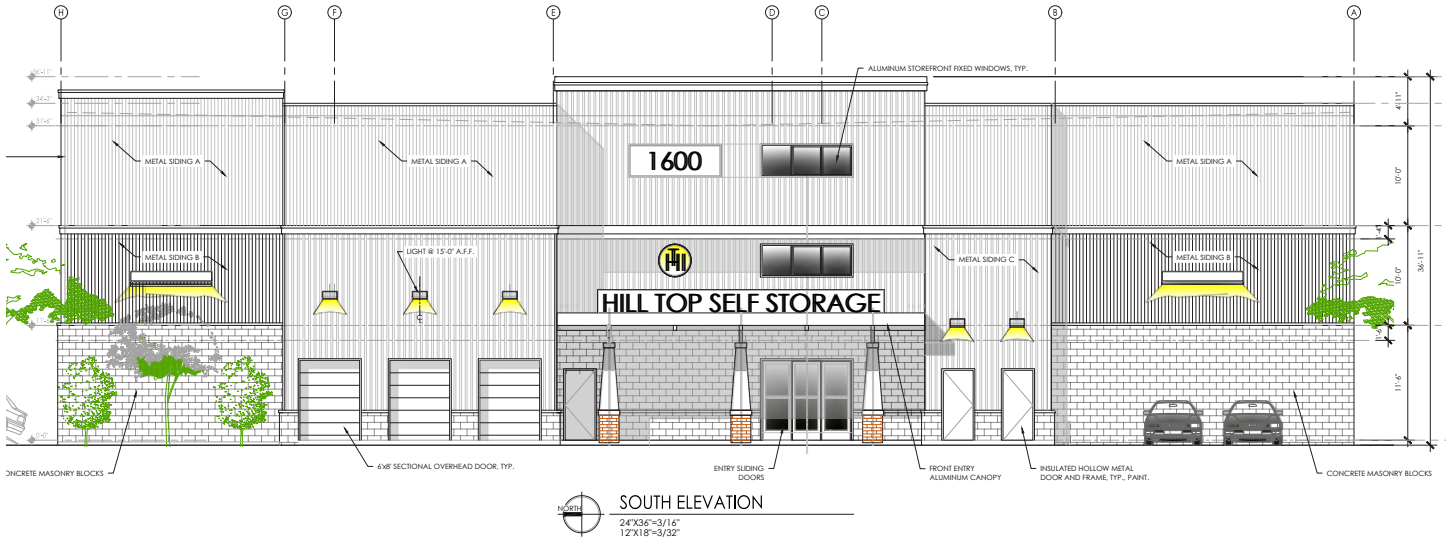
CONTACT US



Garett Hall
Broker
360.259.8790
ghall@burrtemkin.com

Jim Kemmerer
Principal
425.837.1500
kemmerer@burrtemkin.com

380 Front Street South
Issaquah, WA 98027



CONTACT US



Garett Hall
Broker
360.259.8790
ghall@burrtemkin.com

Jim Kemmerer
Principal
425.837.1500
kemmerer@burrtemkin.com

380 Front Street South
Issaquah, WA 98027