

TOWNE LAKE



TOWNE LAKE MARKET

LOCATED AT THE INTERSECTION OF GREENHOUSE RD AND CYPRESS N HOUSTON

ABOUT THE AREA

Set up shop in Towne Lake - an award winning 2,400 acre master planned community in Cypress Texas. Towne Lake Market is strategically located at the corner of Cypress North Houston and Greenhouse Road with direct access to US 290 and just a short drive to Barker Cypress Road.

FEATURES:

- Located in MPC Towne Lake on the hard corner of Greenhouse Rd and Cypress N Houston
- Minutes away from Boardwalk Towne Lake
- Beautifully designed retail development with drive through opportunities
- Patio space available
- Future direct access to US 290 via Greenhouse Rd railroad underpass

IDEAL TENANTS:

- Restaurant, Juice Bar, Coffee Shop
- Medical, Wellness/Fitness
- Insurance and Financial Services
- Salon/Spa Services
- Retail, Entertainment and More



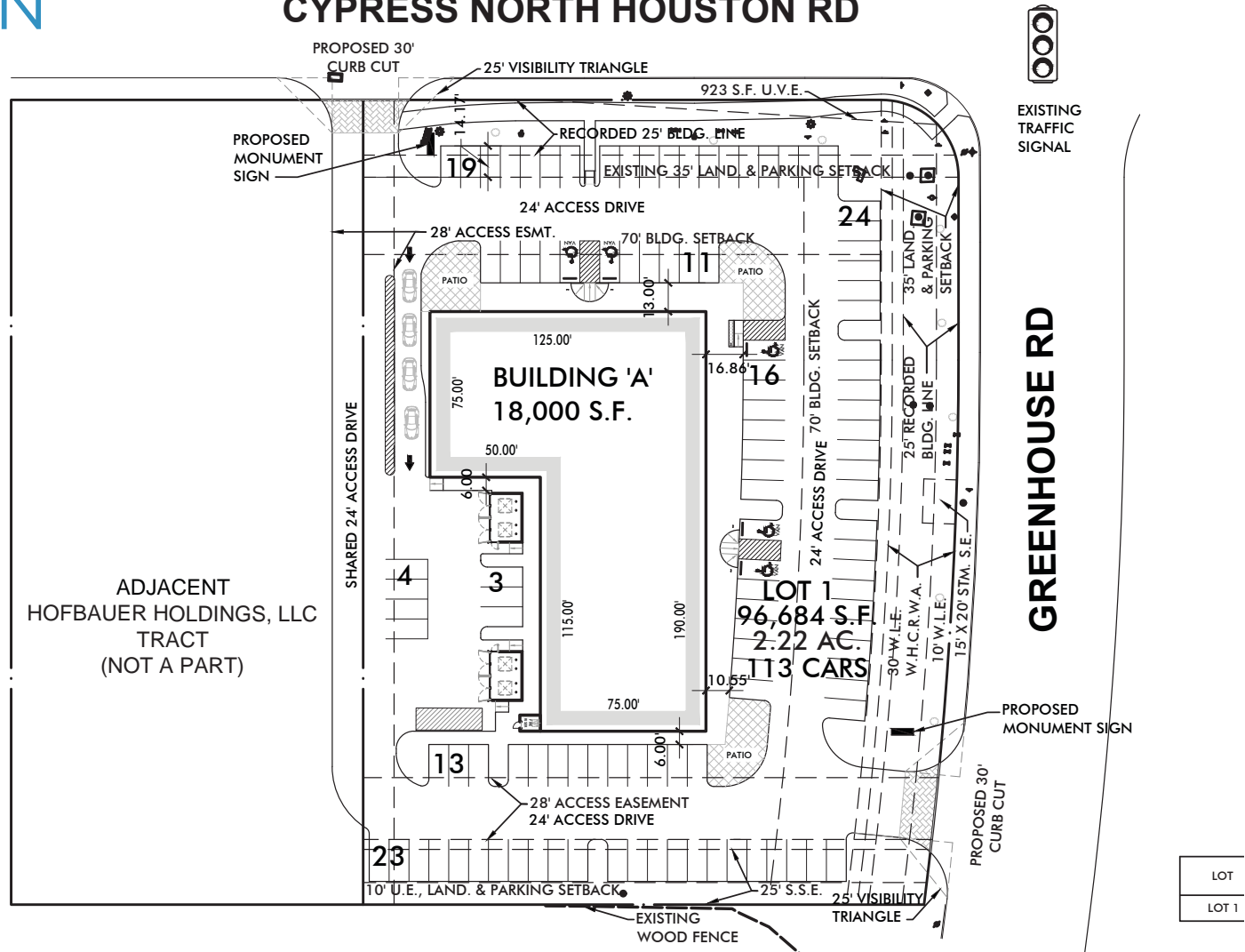
TOWNE LAKE MARKET

Located in the heart of

TOWNE LAKE

SITE PLAN

CYPRESS NORTH HOUSTON RD



GREENHOUSE & CYPRESS NORTH HOUSTON RD

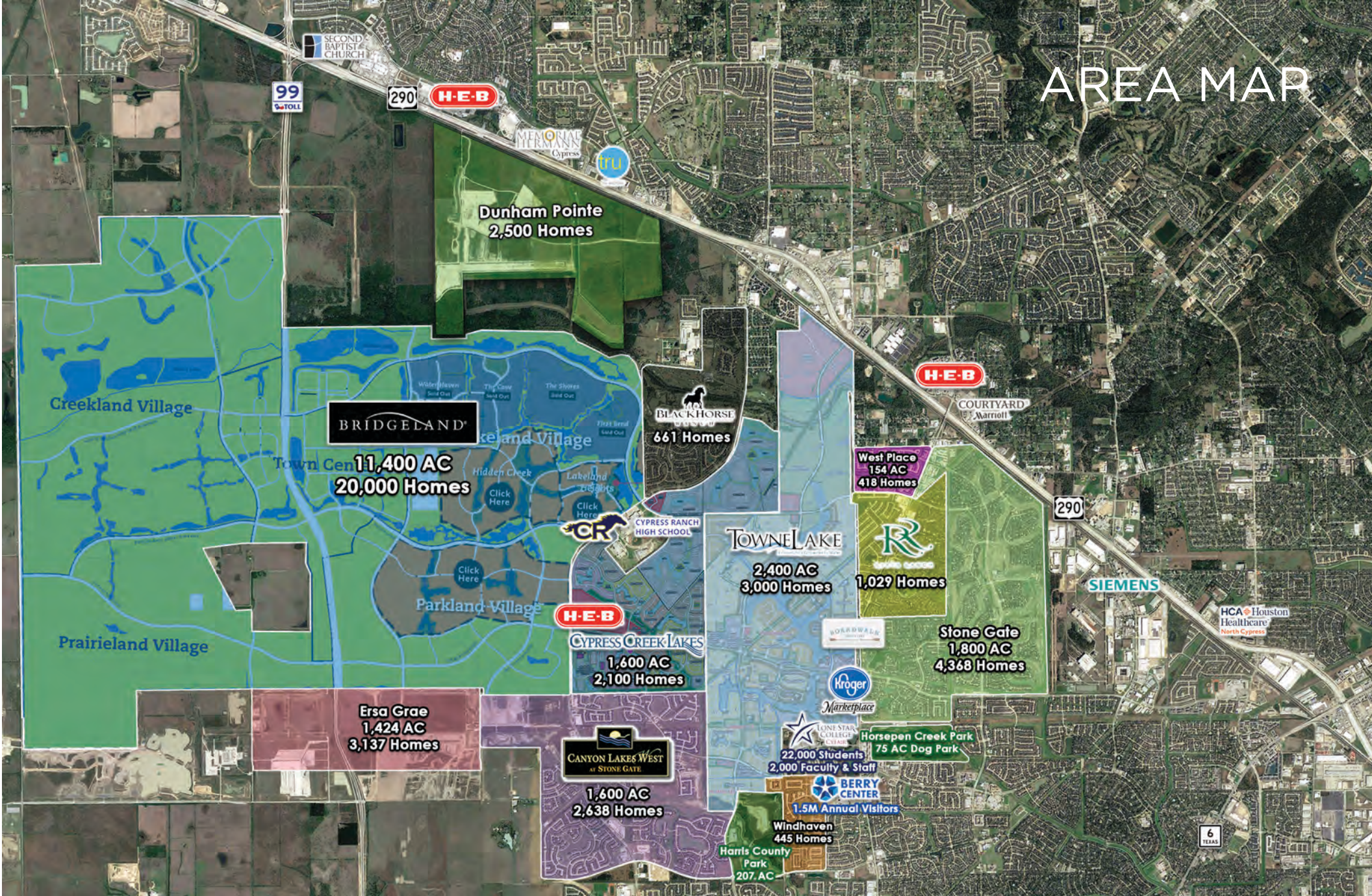
CYPRESS, TEXAS

TOWNE LAKE MARKET

Located in the heart of



AREA MAP



TOWNE LAKE MARKET

Located in the heart of





TOWNE LAKE[®]

Population

3 mile radius	113,766
5 mile radius	304,813
7 mile radius	489,173

Avg. HH Income

3 mile radius	\$136,701
5 mile radius	\$123,640
7 mile radius	\$109,428

Households

3 mile radius	36,675
5 mile radius	99,540
7 mile radius	166,802

Total Employees

3 mile radius	21,588
5 mile radius	64,044
7 mile radius	118,978

TOWNE LAKE MARKET

Located in the heart of

TOWNE LAKE[®]



FOR LEASING INFORMATION
MARY CALDWELL, CCIM, SIOR
MCALDWELL@CALDWELLCOS.COM
281.664.6636

