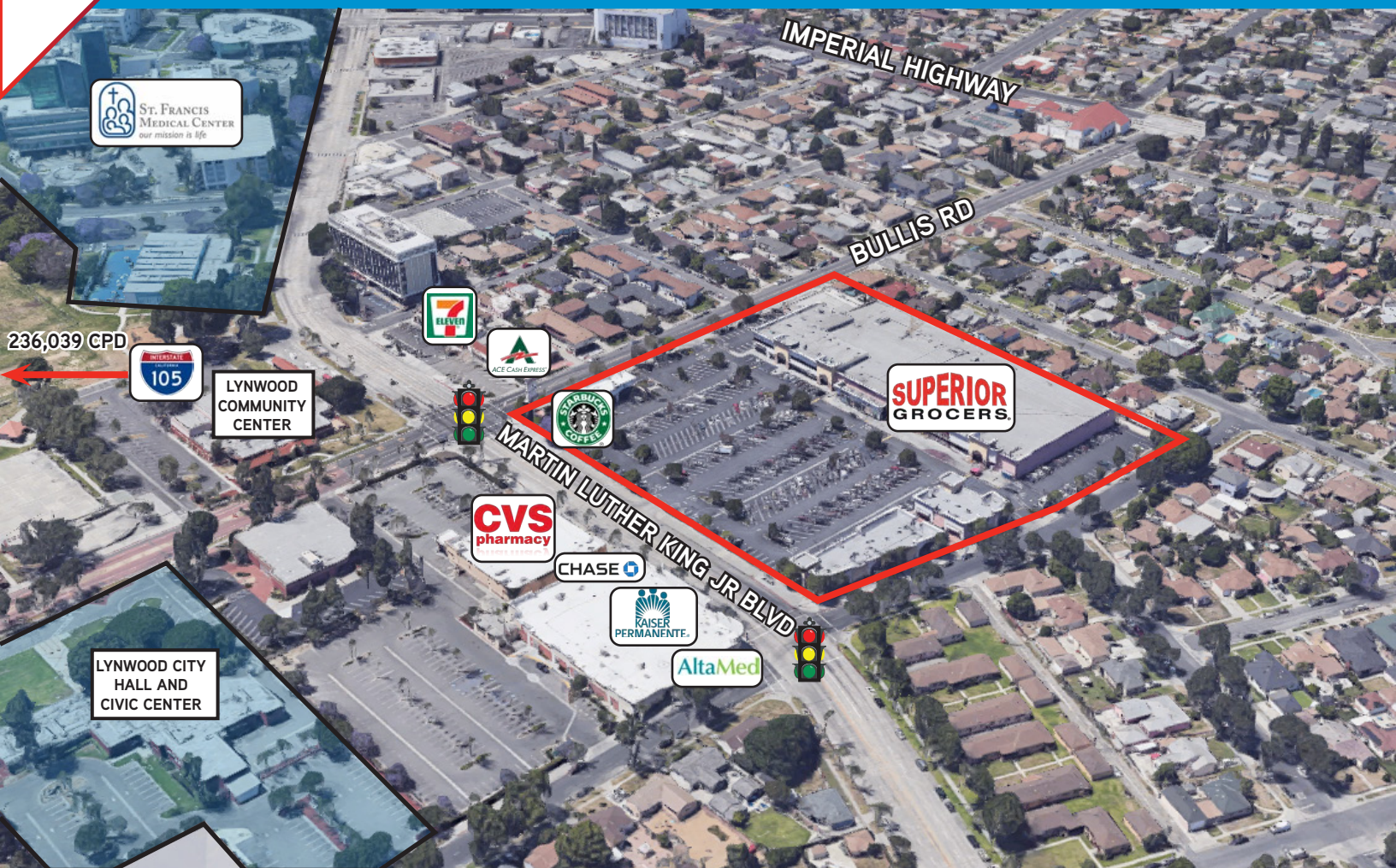


**SUPERIOR
GROCERS.**

FOR LEASE > SUPERIOR GROCERS ANCHORED RETAIL SPACE
3831 E MARTIN LUTHER KING JR BLVD
LYNWOOD, CA 90262

Colliers
INTERNATIONAL
RETAIL FORESIGHT



SHOPPING CENTER CHARACTERISTICS

LEASE RATE:	Negotiable (Triple Net)
SHOPPING CENTER GLA:	±109,924 SF
PREMISES SIZE:	±1,166 SF Restaurant plus ± 500 SF Patio
AREA TENANTS:	Superior Grocers, CVS, Starbucks, Chase, Altamed, AT&T, Kaiser

HIGHLIGHTS

- > Busy neighborhood center anchored by a strong performing Superior Grocers
- > Ideally positioned at a signalized intersection within a dense residential area
- > Located across from the City Hall/Civic Center and St. Francis Medical Center (590,000 SF hospital)
- > Easy access from Martin Luther King Jr Blvd, Imperial Hwy and the 105 & 710 freeways

FOR FURTHER INFORMATION PLEASE CALL: +1 323 609 3172

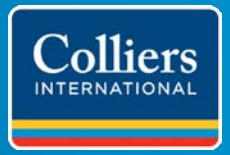
JAMES RODRIGUEZ
SR. VICE PRES. | LIC. NO. 01164377
james.rodriguez@colliers.com

MICHAEL BOHORQUEZ
VICE PRES. | LIC. NO. 01870842
michael.bohorquez@colliers.com

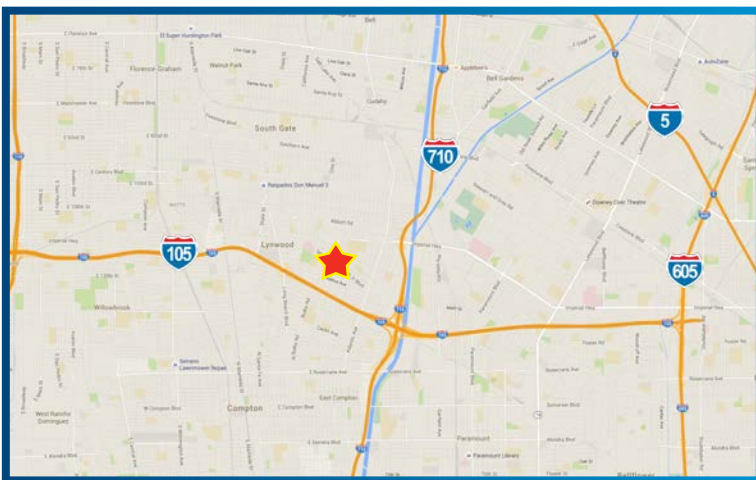
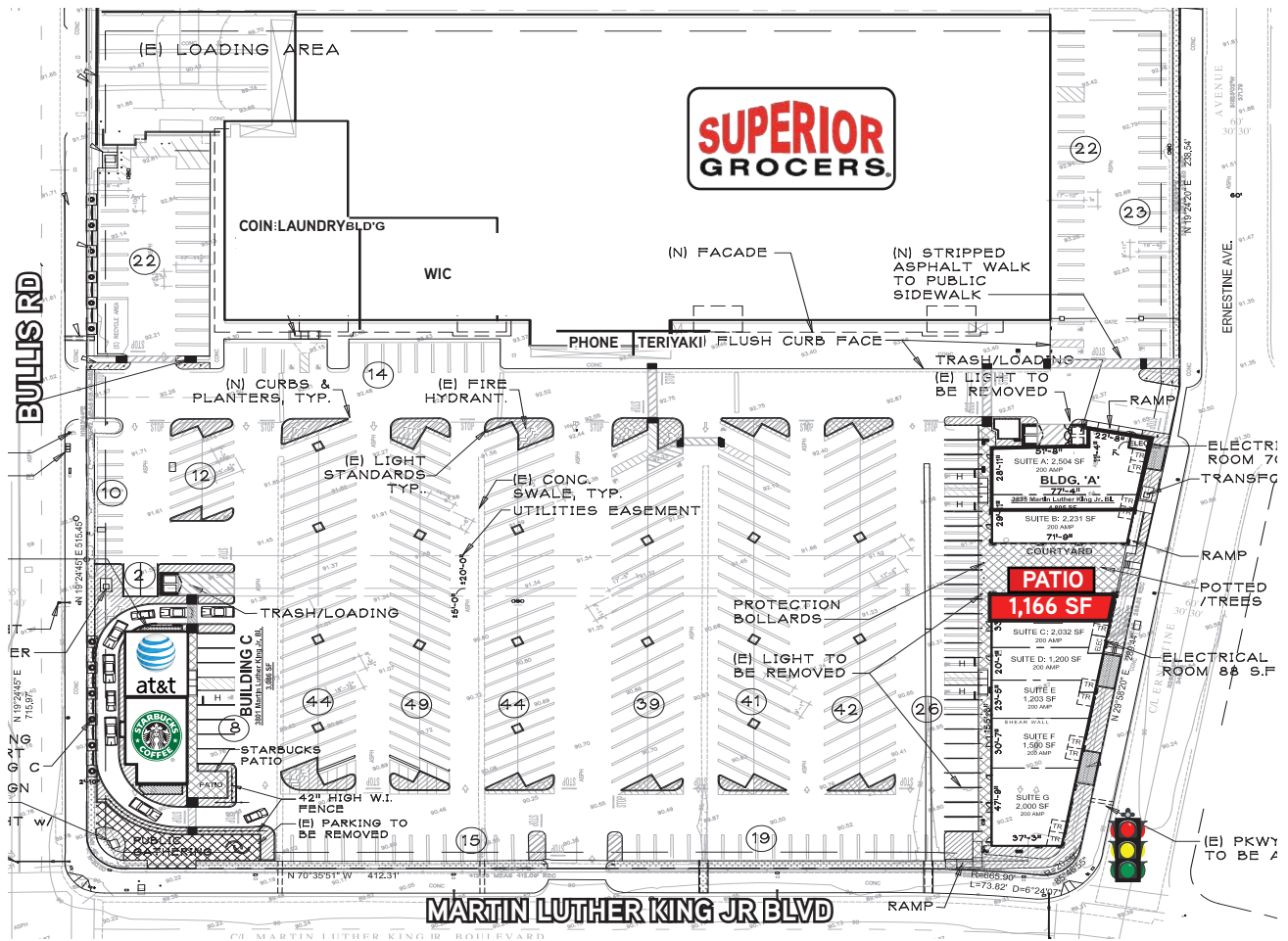
COLLIERS INTERNATIONAL GREATER LOS ANGELES, INC | DTLA
865 S. Figueroa St., Suite 3500 | Los Angeles, CA 90017
<https://tinyurl.com/RodriguezBohorquezTeam>

SUPERIOR GROCERS

FOR LEASE > SUPERIOR GROCERS ANCHORED RETAIL SPACE
3831 E MARTIN LUTHER KING JR BLVD
LYNWOOD, CA 90262



RETAIL FORESIGHT



2019 DEMOGRAPHICS	1 Mile	3 Mile	5 Mile
Population:	50,782	399,275	971,940
Est. Households:	11,528	95,508	248,171
Hispanic Population:	91.0%	85.2%	81.2%
Est. Daytime Population:	22,214	193,446	536,530
Avg. Household Income:	\$76,573	\$66,373	\$67,824

Source: Applied Geographic Solutions

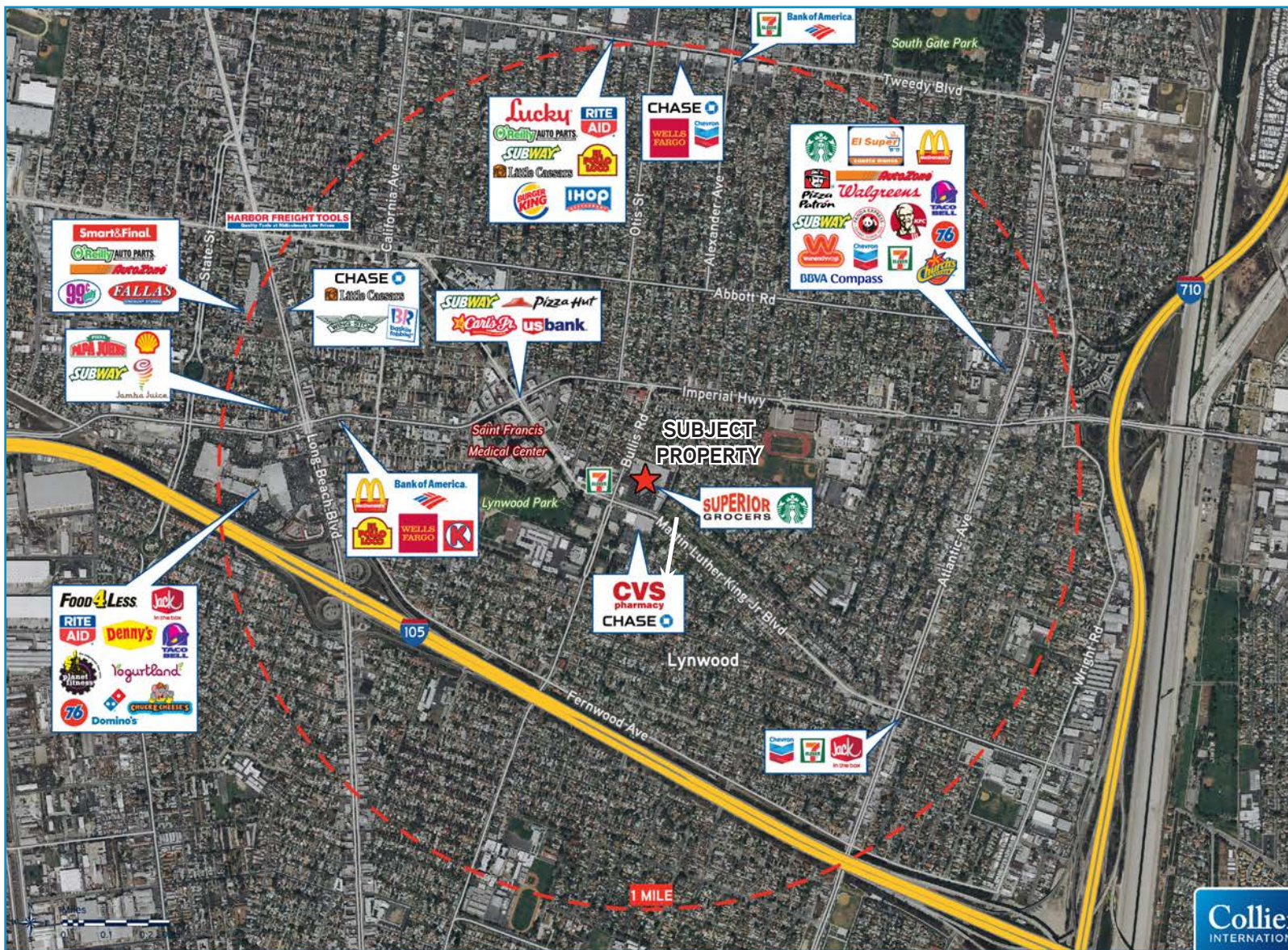
FOR FURTHER INFORMATION PLEASE CALL: +1 323 609 3172

JAMES RODRIGUEZ
 SR. VICE PRES. | LIC. NO. 01164377
 james.rodriguez@colliers.com

MICHAEL BOHORQUEZ
 VICE PRES. | LIC. NO. 01870842
 michael.bohorquez@colliers.com

COLLIERS INTERNATIONAL GREATER LOS ANGELES, INC | DTLA
 865 S. Figueroa St., Suite 3500 | Los Angeles, CA 90017
<https://tinyurl.com/RodriguezBohorquezTeam>

Retail Competition Map - 1 mile Radius



FOR FURTHER INFORMATION PLEASE CALL: +1 323 609 3172

JAMES RODRIGUEZ
 SR. VICE PRES. | LIC. NO. 01164377
 james.rodriquez@colliers.com

MICHAEL BOHORQUEZ
 VICE PRES. | LIC. NO. 01870842
 michael.bohorquez@colliers.com

COLLIERS INTERNATIONAL GREATER LOS ANGELES, INC | DTLA
 865 S. Figueroa St., Suite 3500 | Los Angeles, CA 90017
<https://tinyurl.com/RodriguezBohorquezTeam>