



653 Home Road

Mansfield, OH 44901



Offering Summary

Sale Price	\$875,000
Building Size:	7,200 SF
Lot Size:	7.534 Acres
Year Built:	1994
Zoning:	Commercial
APN:	0386015513001 0386015513002

Property Overview

Outstanding 7,200 square feet retail/flex building located on 7.53 acres. The building features a spacious retail area with three offices and restrooms, along with a storage area equipped with a mezzanine. The expansive lot is ideal for a company requiring a laydown yard or having rolling stock. Additionally, there is a paved parking lot for customers and a concrete outdoor dock for loading purposes.

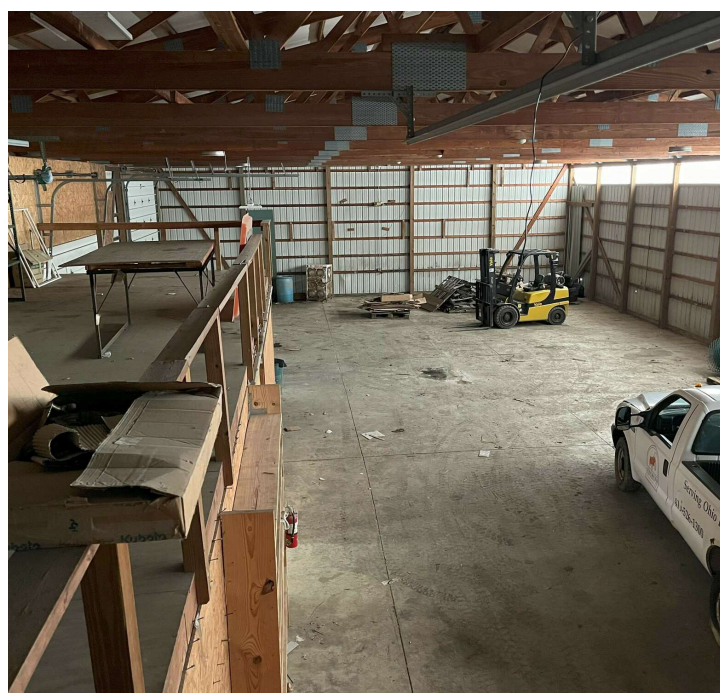
Location Overview

Conveniently located just to the North-West of the intersection of 4th Street and Home Road.



653 Home Road

Mansfield, OH 44901



SHAI•HESS
COMMERCIAL REAL ESTATE LLC.

Brokerage, Development, Management
www.shai-hess.com



Additional Photos

653 Home Road

Mansfield, OH 44901



Shai-Hess Commercial | 1471 Granville Road | Newark, OH 43055 | 740.587.7441 | shai-hess.com

Information contained has been established from sources that we have no doubt as to accuracy, but we do not guarantee it.





653 Home Road

Mansfield, OH 44901



Google

Map data ©2024 Imagery ©2024 CNES / Airbus, Maxar
Technologies, USDA/FPAC/GEO



Shai-Hess Commercial | 1471 Granville Road | Newark, OH 43055 | 740.587.7441 | shai-hess.com

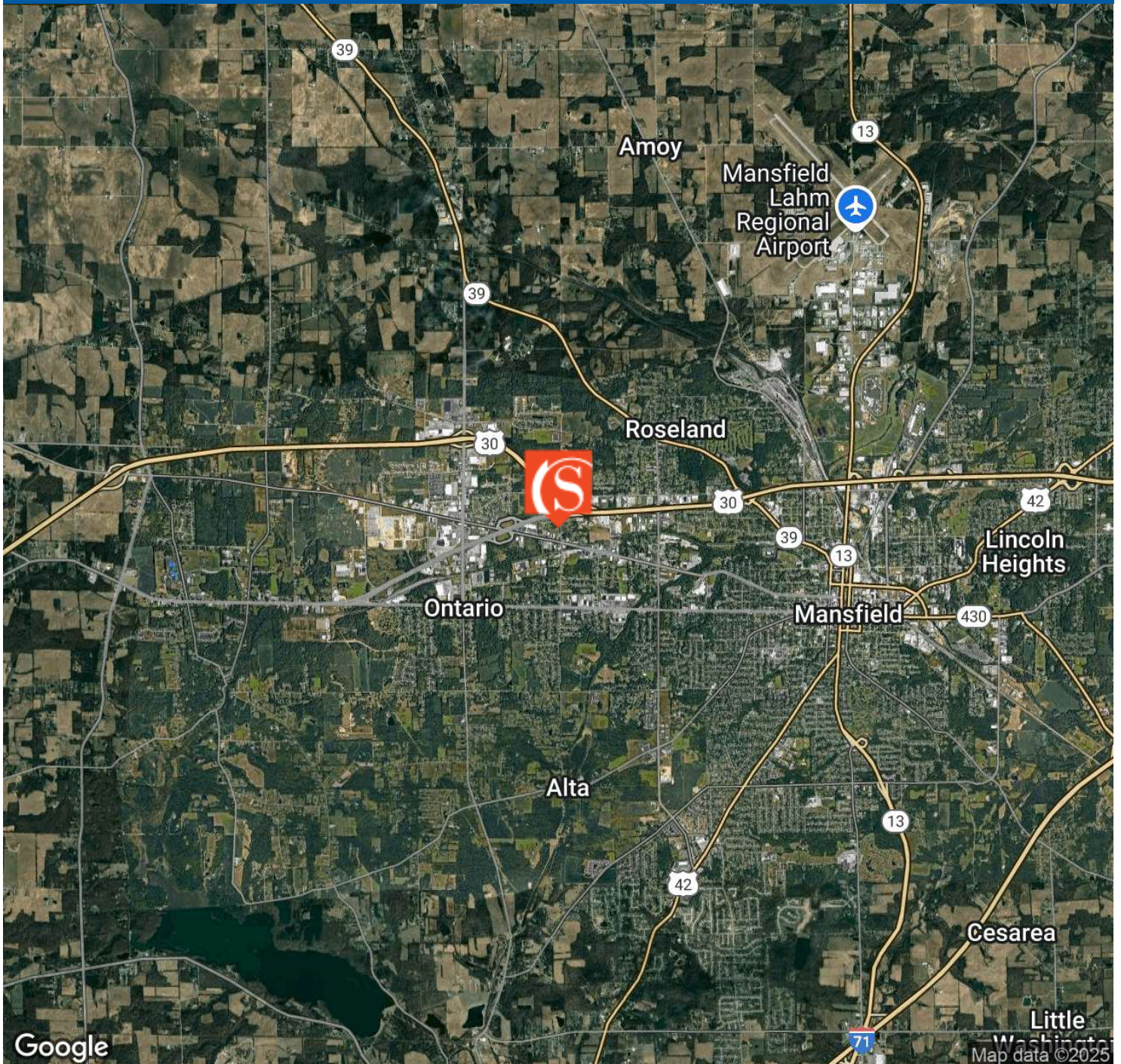
Information contained has been established from sources that we have no doubt as to accuracy, but we do not guarantee it.





653 Home Road

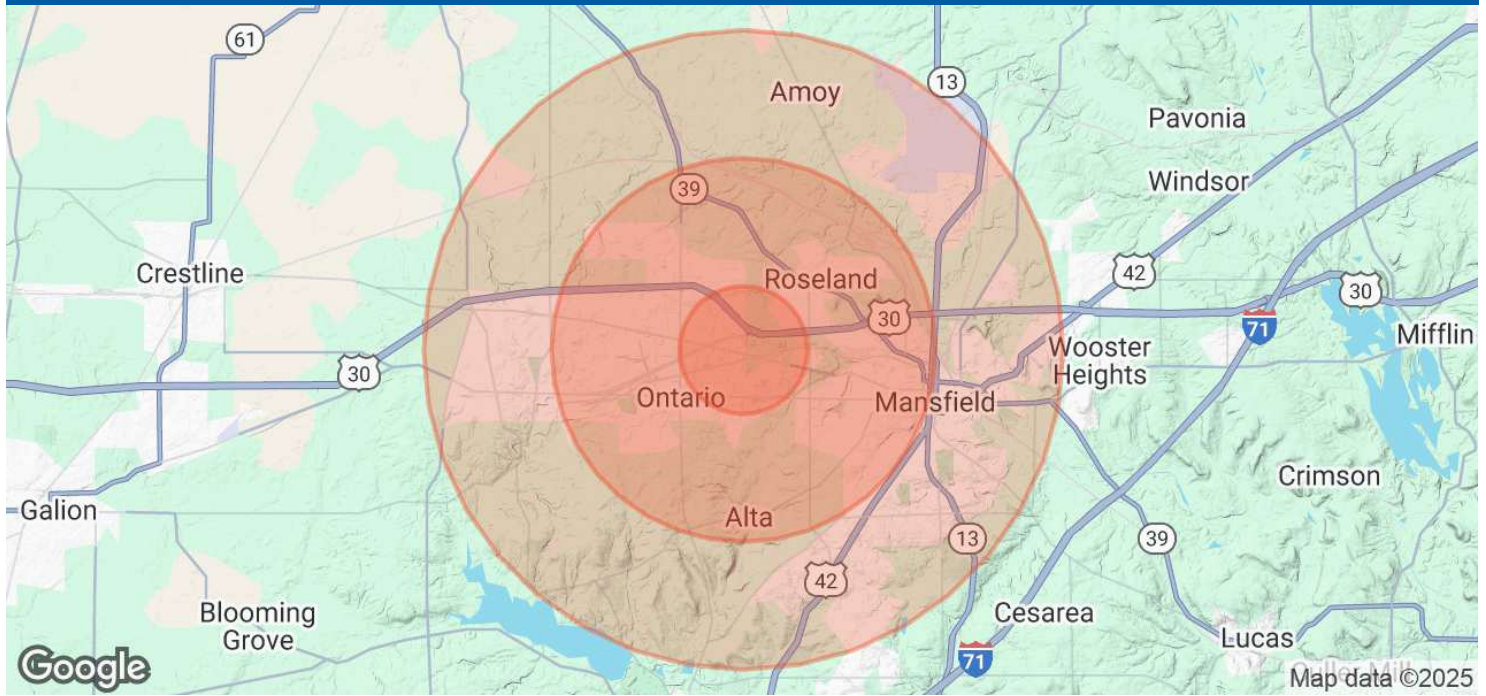
Mansfield, OH 44901





653 Home Road

Mansfield, OH 44901



Population

	1 Mile	3 Miles	5 Miles
Total Population	2,096	27,992	61,378
Average Age	47.2	39.2	40.7
Average Age (Male)	42.5	36.1	38.6
Average Age (Female)	50.1	42.3	39.6

Households & Income

	1 Mile	3 Miles	5 Miles
Total Households	1,054	13,779	28,021
# of Persons per HH	2.0	2.0	2.2
Average HH Income	\$53,417	\$47,880	\$48,679
Average House Value	\$99,690	\$84,567	\$92,311

2020 American Community Survey (ACS)

