

Chippewa Medical Building

5701 Chippewa Street

St. Louis, MO 63109



**4,250 SF
Medical Office
For Lease**

FOR ADDITIONAL INFO, CONTACT:

Joseph Lampe, Director - Healthcare

314-728-6007 / jlampe@ccr-stl.com

Jared Stone, Associate

314-604-8466 / jstone@ccr-stl.com

Leased By:



8000 Maryland Avenue, Suite 1120

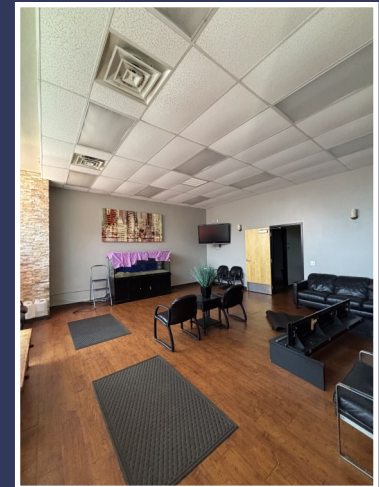
St. Louis, MO 63105

www.ccr-stl.com

Building Highlights:

- ◆ Modern medical office design flexible for many uses: Primary Care, Pain Management, Urgent Care, Oral Surgery, MRI Clinic, Veterinarian, and more
- ◆ Prominent building and pylon signage opportunities
- ◆ Private .12 acre parking lot with 12 dedicated spaces
- ◆ Well maintained interior featuring: waiting room, reception area, 4 exam rooms, procedure room, nurse station, X-Ray room, break room, 2 restrooms, and 2 offices
- ◆ Dense residential demographics: 145,239 residents within a 3-mile radius
- ◆ Prime Southhampton location with excellent visibility and frontage along Chippewa Street
- ◆ High traffic corridor: 16,000+ Vehicles Per Day

FOR ADDITIONAL INFO, CONTACT:



Leased By:



8000 Maryland Avenue, Suite 1120
St. Louis, MO 63105
www.ccr-stl.com

Joseph Lampe, Director - Healthcare
314-728-6007 / jlampe@ccr-stl.com

Jared Stone, Associate
314-604-8466 / jstone@ccr-stl.com



5701 Chippewa Street

5641 Chippewa Street (Private .12 acre lot with 12 parking spaces)



Chippewa Street

Hampton Ave

Hampton Village Plaza

Sulphur Ave

FOR ADDITIONAL INFO, CONTACT:

Joseph Lampe, Director - Healthcare
314-728-6007 / jlampe@ccr-stl.com

Jared Stone, Associate
314-604-8466 / jstone@ccr-stl.com

Leased By:



8000 Maryland Avenue, Suite 1120
St. Louis, MO 63105
www.ccr-stl.com

The information contained herein has been obtained from the owner of the property or from other sources. The brokers do not guarantee the accuracy of the information. Sellers and brokers make no representation as to the environmental or other condition of the property and recommend that purchaser/tenant investigate fully.