

FOR LEASE

BALTIMORE COUNTY, MD

SOUTH DOLFIELD

10211 - 10219 SOUTH DOLFIELD ROAD, OWINGS MILLS, MD 21117



PROPERTY HIGHLIGHTS:

- ▶ GARAGE AND SURFACE PARKING AVAILABLE
- ▶ SEPARATELY/INDIVIDUALLY MAINTAINED HVAC UNITS
- ▶ PROPERTY MANAGEMENT ON-SITE
- ▶ WALKABLE DISTANCE TO FOUNDRY ROW AND METRO CENTRE
- ▶ CONVENIENT ACCESS TO I-795 AND REISTERSTOWN ROAD

DAVID S. BROWN
ENTERPRISES, LTD.

KEVIN KEANE | SVP, OFFICE LEASING
410.581.2519 | KEVIN@DAVIDSBROWN.COM

BRENT MANGUM | VP, OFFICE LEASING
410.581.2518 | BRENT@DAVIDSBROWN.COM

RYAN BARRETT | LEASING ASSOCIATE
410.581.2521 | RBARRETT@DAVIDSBROWN.COM

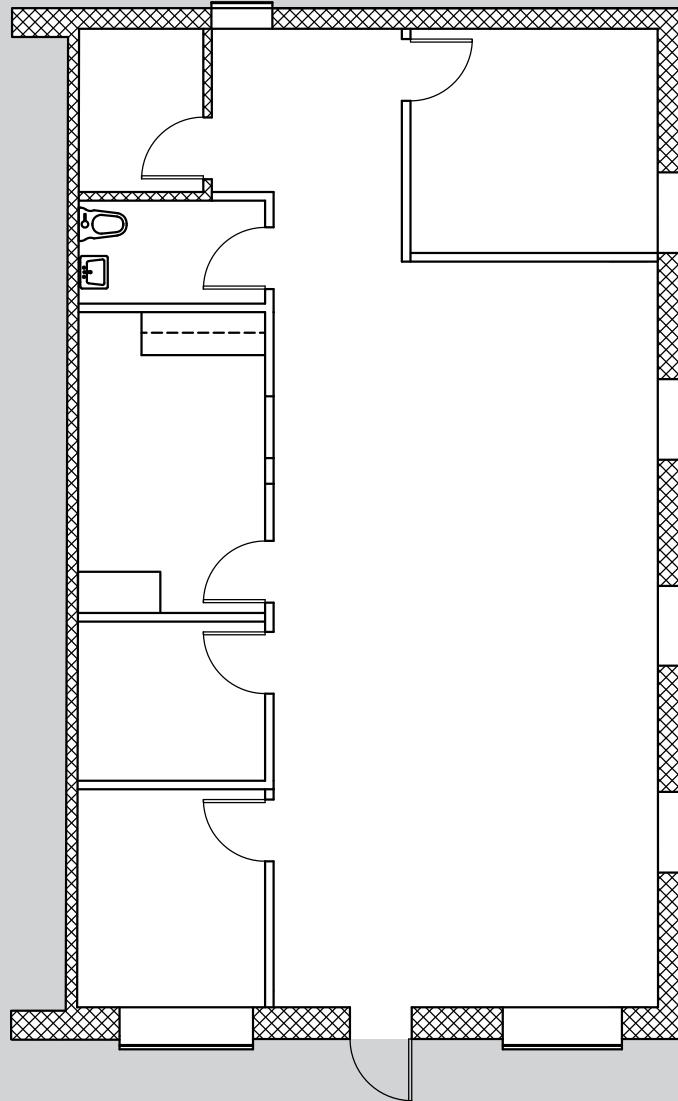
DAVID S. BROWN ENTERPRISES | 100 PAINTERS MILL ROAD, OWINGS MILLS, MD 21117 | 410.581.2520 | WWW.DAVIDSBROWN.COM |

FOR LEASE

B BALTIMORE COUNTY, MD

SOUTH DOLFIELD

10211 - 10219 SOUTH DOLFIELD ROAD, OWINGS MILLS, MD 21117



.....
AVAILABLE

▶ SUITE 10219 - 1,500 SF

.....

SOUTH DOLFIELD

10211 - 10219 SOUTH DOLFIELD ROAD, OWINGS MILLS, MD 21117

MAP

