



Premier Warehouse Distribution  
Class 'A' Facility



**±111,769 SF AVAILABLE FOR LEASE**

**2333 E. PACIFICA PLACE | RANCHO DOMINGUEZ, CA 90220**

**30' CLEAR | ESFR SPRINKLER SYSTEM | 15 DOCK HIGH POSITIONS | AVAILABLE SEPTEMBER 1ST, 2024**



**Rexford  
Industrial**

**CBRE**



**±111,769 SF Building**

**2333 E. PACIFICA PLACE**



### Property Highlights

- Rancho Pacifica Industrial Park
- Best in Class Space
- Private Secured Park Environment
- 24 Hour Park Security
- ESFR Sprinkler System
- 30' Clearance
- 15 Dock Positions
- Refurbished ±2,683 SF Office
- Close Proximity to Ports of LA & LB  
& 405, 110, 91 & 710 Freeways

Los Angeles  
International  
Airport

Inglewood

Manhattan Beach

Gardena

Santa Fe  
Springs

Hermosa Beach

Carson

Cerritos

Torrance

Long Beach  
Airport

Long Beach

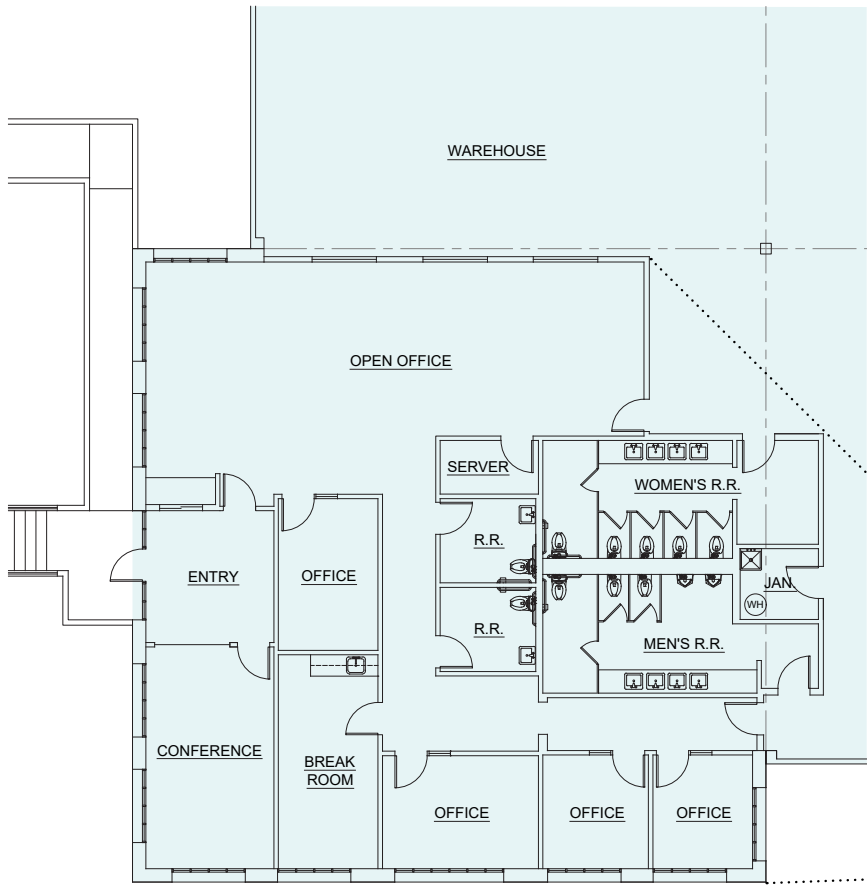
Palos Verdes

San Pedro

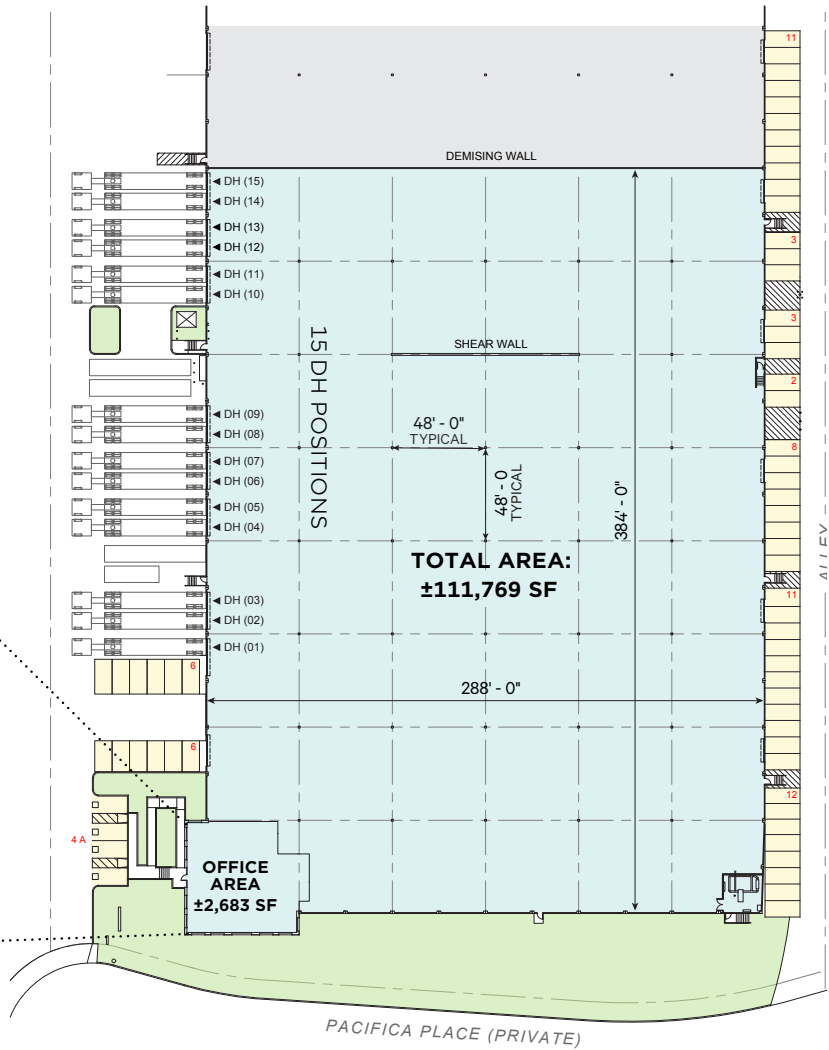
Los  
Angeles  
Port

Long  
Beach  
Port





OFFICE AREA: 3,396 SF



**OFFICE**  
±2,683 SF

**WAREHOUSE**  
±109,086 SF

**TOTAL**  
±111,769 SF

PLAN LAYOUT SUBJECT TO FIELD CONDITIONS AND MAY DIFFER FROM PLAN AS SHOWN. ALL INFORMATION PRESENTED ON THIS DRAWING IS PRESUMED TO BE ACCURATE, HOWEVER TENANT SHOULD VERIFY PERTINENT INFORMATION PRIOR TO COMMITTING TO A LEASE. ANY FURNITURE OR APPLIANCES SHOWN ON PLAN ARE FOR CONCEPT ONLY AND WILL BE TENANT PROVIDED.



**Rexford  
Industrial**

## Leasing Contacts

**JOHN SCHUMACHER**

+1 310 489 1439

JOHN.SCHUMACHER@CBRE.COM

LIC. 00987225

**BRET QUINLAN**

+1 310 408 8696

BRET.QUINLAN@CBRE.COM

LIC. 01144338

**JAMES HOOKS**

+1 310 897 1789

JAMES.HOOKS@CBRE.COM

LIC. 01813302

**JENNY EDWARDS**

+1 310 745 7506

JENNY.EDWARDS@CBRE.COM

LIC. 02217120

# CBRE

**CBRE**

2221 Rosecrans Ave, STE 100

El Segundo, CA 90245

© 2024 CBRE, Inc. All rights reserved. This information has been obtained from sources believed reliable but has not been verified for accuracy or completeness. CBRE, Inc. makes no guarantee, representation or warranty and accepts no responsibility or liability as to the accuracy, completeness, or reliability of the information contained herein. You should conduct a careful, independent investigation of the property and verify all information. Any reliance on this information is solely at your own risk. CBRE and the CBRE logo are service marks of CBRE, Inc. All other marks displayed on this document are the property of their respective owners, and the use of such marks does not imply any affiliation with or endorsement of CBRE. Photos herein are the property of their respective owners. Use of these images without the express written consent of the owner is prohibited.