

203, 205, 221, & 223 W. SOPHIA STREET
MAUMEE, OHIO 43537

INDUSTRIAL BUILDING FOR SALE OR LEASE
9,427 Square Feet Available



**SIGNATURE
ASSOCIATES**
KNOW SIGNATURE | KNOW RESULTS

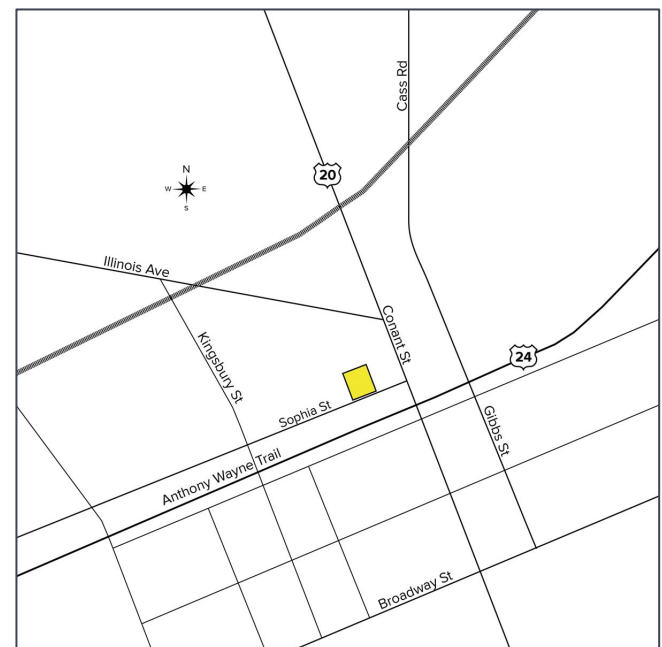
FULL-SERVICE COMMERCIAL REAL ESTATE

**FREESTANDING MAUMEE
INDUSTRIAL/OFFICE BUILDING**



GENERAL INFORMATION

Sale Price:	\$575,000
Lease Rate:	\$4.75/sf NNN
Building Size:	9,427 square feet
Number of Stories:	1
Year Constructed:	1955
Condition:	Good
Acreage:	0.51
Land Dimensions:	205.32' x 79' Irregular
Closest Cross Street:	Between Kingsbury Rd. & Conant St.
County:	Lucas
Zoning:	Controlled Industrial District
Parking:	Approximately 13 spaces
Curb Cuts:	2
Street:	2 lane, 2 way



For more information, please contact:

MEGAN MALCZEWSKI, CCIM, SIOR
(419) 215 1008
mmalczewski@signatureassociates.com

SIGNATURE ASSOCIATES
7150 Granite Circle, Suite 200
Toledo, Ohio 43617
www.signatureassociates.com

Information is subject to verification and no liability for errors or omissions is assumed. Price is subject to change and listing withdrawal.

203, 205, 221 & 223 Sophia St., Maumee, OH 43537

Industrial Building For Sale or Lease

9,427
Square Feet
AVAILABLE

BUILDING SPECIFICATIONS

Office Space:	Approx. 3,500 square feet
Shop Space:	Approx. 4,427 square feet 3 Bay Garage - 1,500 square feet
Exterior Walls:	Mostly steel; some concrete block on the north side of the building
Structural System:	Wood and steel
Roof:	Flat and pitched deck, asphalt shingle
Floors:	Concrete slab
Floor Coverings:	Carpet and tile in office areas
Ceiling Height:	Approx. 10' to 12' at eaves Clear Height – 9' to 11'
Basement:	No
Heating:	Office - entirely heated via electric base board heat. Shop - Gas forced unit suspended space heaters. Garage - No heat.
Air Conditioning:	Wall mounted or ground modular A/C units in office areas only
Power:	200-amp, 3+ panels, all single phase
Security System:	Yes
Restrooms:	1 men's and 1 women's
Overhead Door:	4 – 9' x 10' and 1 – 10' x 10'
Truck Well/Dock:	No
Sprinklers:	No
Rail:	No
Cranes:	No
Floor Drains:	No
Signage	Facia

BUILDING INFORMATION

Current Occupant:	Sealing Resource, Inc.
Occupancy Date:	Upon closing or lease execution
Sign on Property:	Yes
Key Available:	Yes - lockbox

LEASE DETAILS

Term:	Negotiable
Security Deposit:	Equal to 1 month's rent
Options:	Negotiable
Improvement Allowance:	Negotiable
Tenant Responsible for: Utilities, suite janitorial, content and liability insurance and prorata share of NNN charges.	

Comments:

- Interior office area was updated in recent years and is in good condition.
- Sealing Resource, Inc. leased for one year 3,223 square feet and 1,810 square feet for \$3,000/month + gas. Tenant will vacate premises with sixty days notice. Lease commenced on June 1, 2024.

Office layout consists of:

- Open front office area
- 11 private offices
- Storage rooms
- File room
- Large conference room
- Training room (unfinished, no flooring)

For more information, please contact:

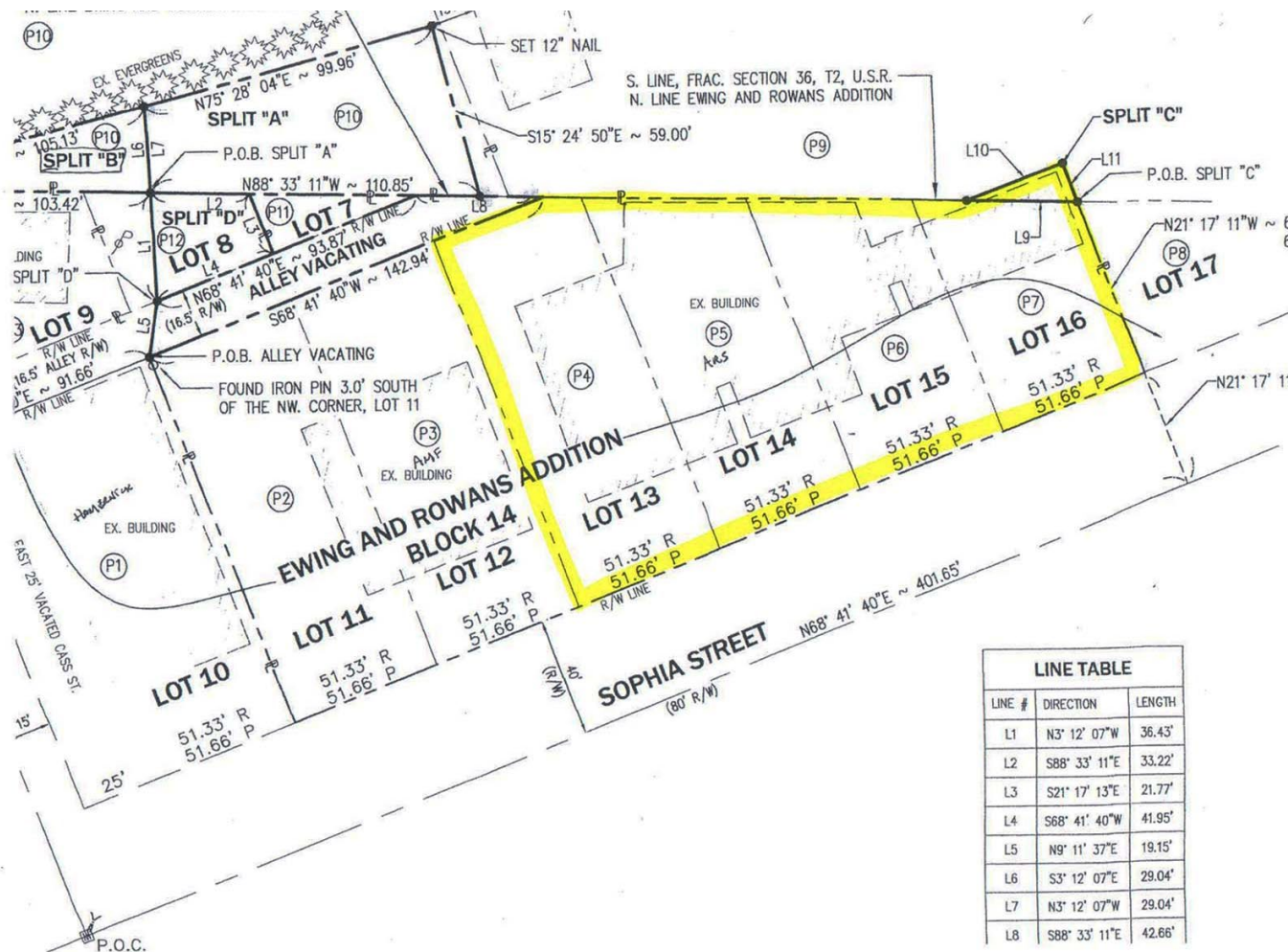
MEGAN MALCZEWSKI, CCIM, SIOR
(419) 215 1008
mmalczewski@signatureassociates.com

SIGNATURE ASSOCIATES
7150 Granite Circle, Suite 200
Toledo, Ohio 43617
www.signatureassociates.com

203, 205, 221 & 223 Sophia St., Maumee, OH 43537

Industrial Building For Sale or Lease

9,427
Square Feet
AVAILABLE



Lot #	Address	TD/Parcel	Assessor	Acreage	Bldg Size	2025 Annual RE Taxes
13	223 W. Sophia Street	36-07467	43-184-007	0.1555	-----	\$ 1,122.29
14	221 W. Sophia Street	36-07471	43-184-006	0.1420	-----	\$ 1,009.59
14	205 W. Sophia Street	36-07474	43-184015	0.1174	7,927	\$ 10,284.27
16	203 W. Sophia Street	36-07477	43-184-014	0.0927	1,500	\$ 1,796.99

For more information, please contact:

MEGAN MALCZEWSKI, CCIM, SIOR

(419) 215 1008

mmalczewski@signatureassociates.com

SIGNATURE ASSOCIATES

7150 Granite Circle, Suite 200

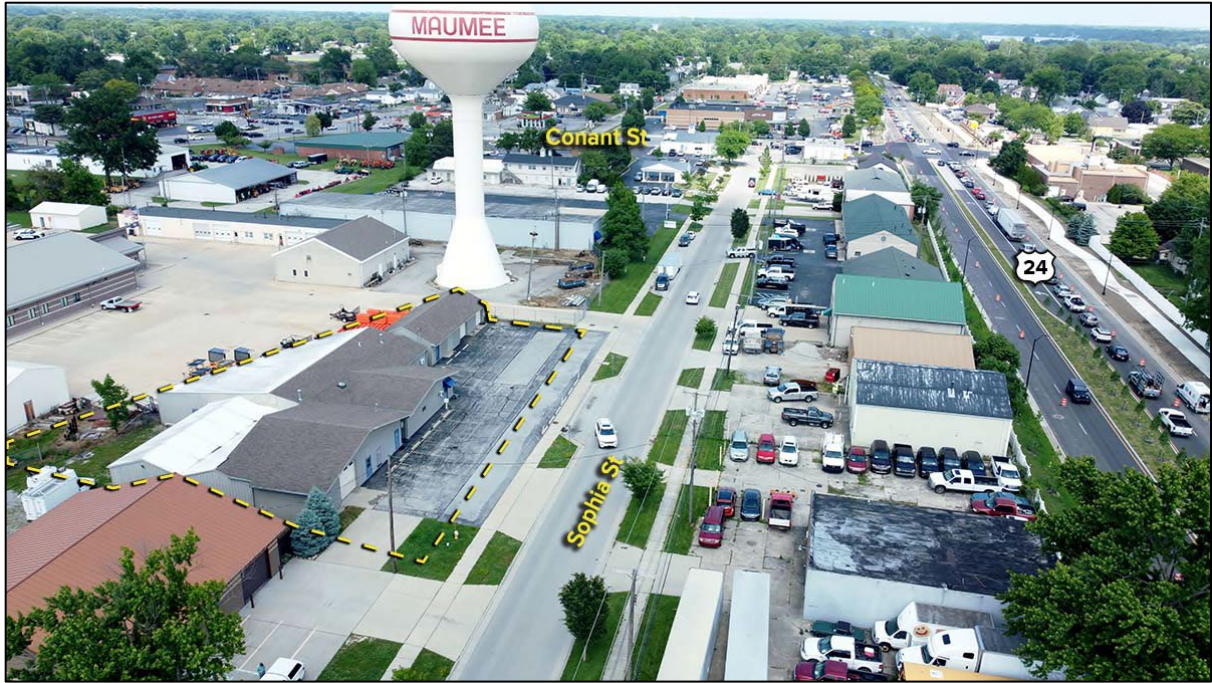
Toledo, Ohio 43617

www.signatureassociates.com

203, 205, 221 & 223 Sophia St., Maumee, OH 43537

Industrial Building For Sale or Lease

9,427
Square Feet
AVAILABLE



For more information, please contact:

MEGAN MALCZEWSKI, CCIM, SIOR

(419) 215 1008

mmalczewski@signatureassociates.com

SIGNATURE ASSOCIATES

7150 Granite Circle, Suite 200

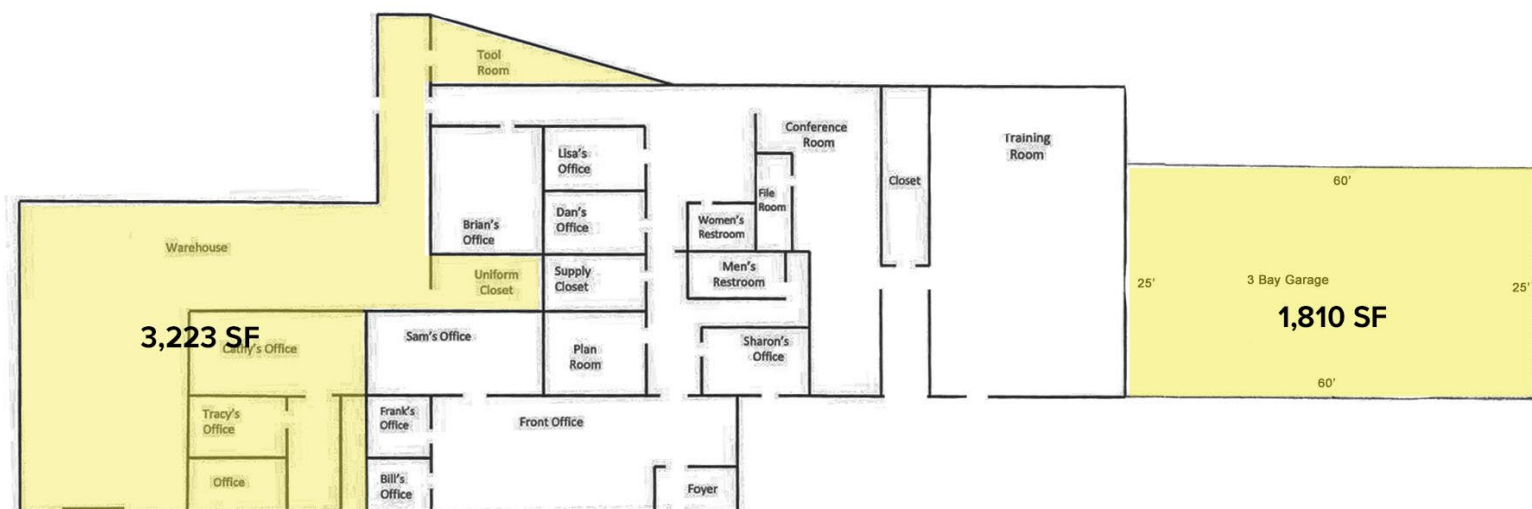
Toledo, Ohio 43617

www.signatureassociates.com

Information is subject to verification and no liability for errors or omissions is assumed. Price is subject to change and listing withdrawal.

203, 205, 221 & 223 Sophia St., Maumee, OH 43537
Industrial Building For Sale or Lease

9,427
Square Feet
AVAILABLE



5,033 SF Leased for 1 year
commencing June 1, 2025
to Sealing Resource, Inc.



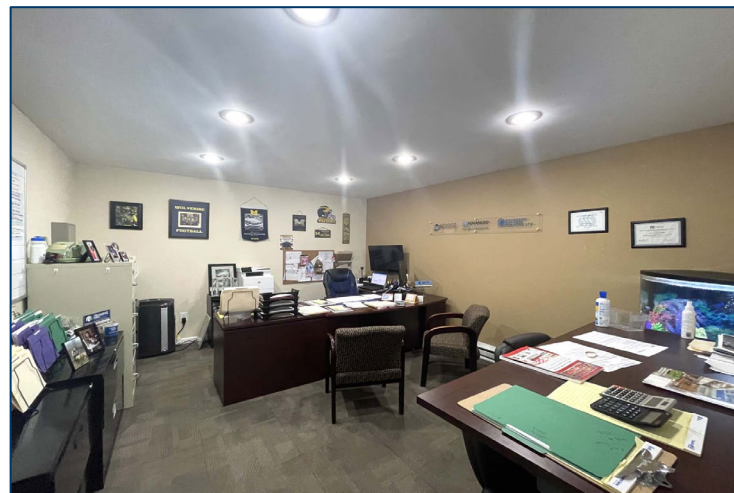
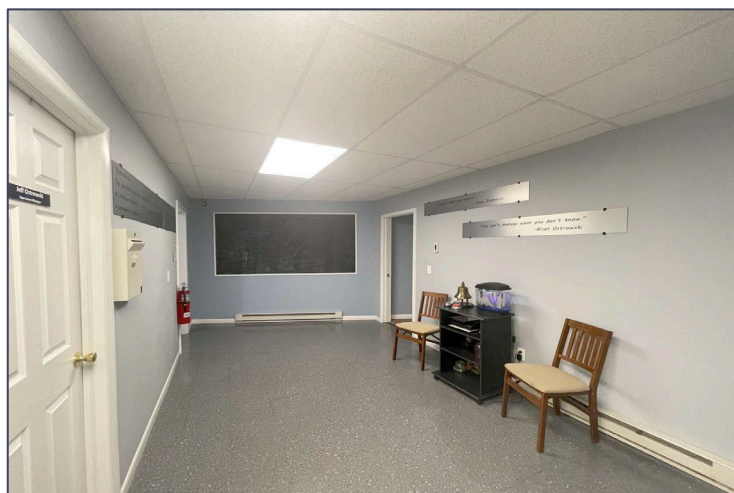
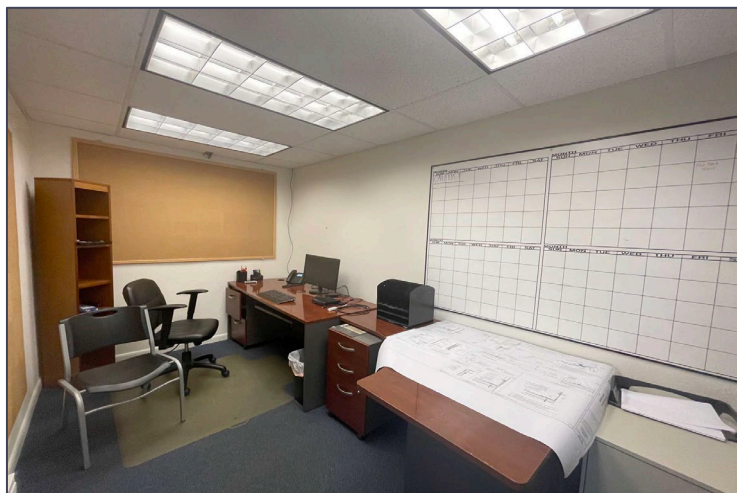
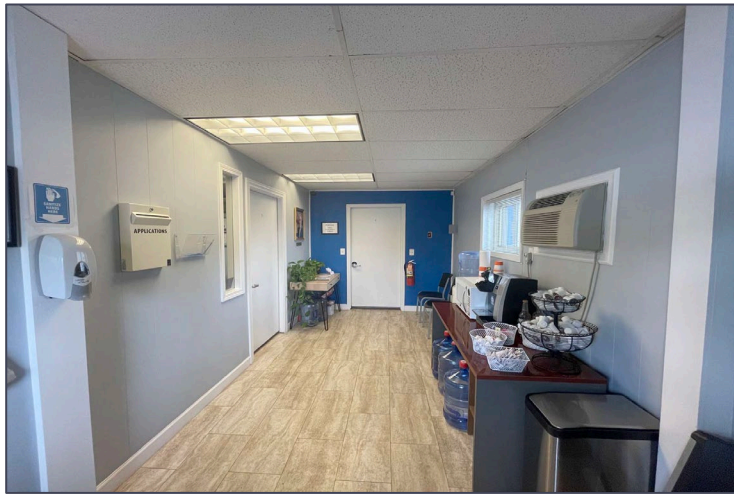
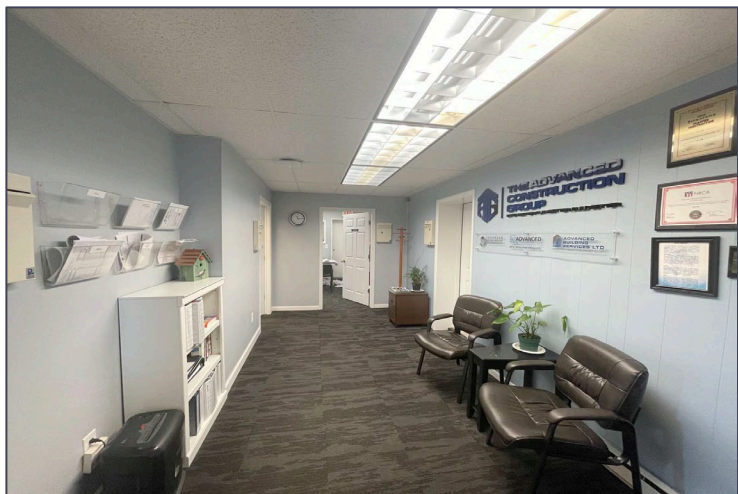
For more information, please contact:

MEGAN MALCZEWSKI, CCIM, SIOR
(419) 215 1008
mmalczewski@signatureassociates.com

SIGNATURE ASSOCIATES
7150 Granite Circle, Suite 200
Toledo, Ohio 43617
www.signatureassociates.com

203, 205, 221 & 223 Sophia St., Maumee, OH 43537
Industrial Building For Sale or Lease

9,427
Square Feet
AVAILABLE



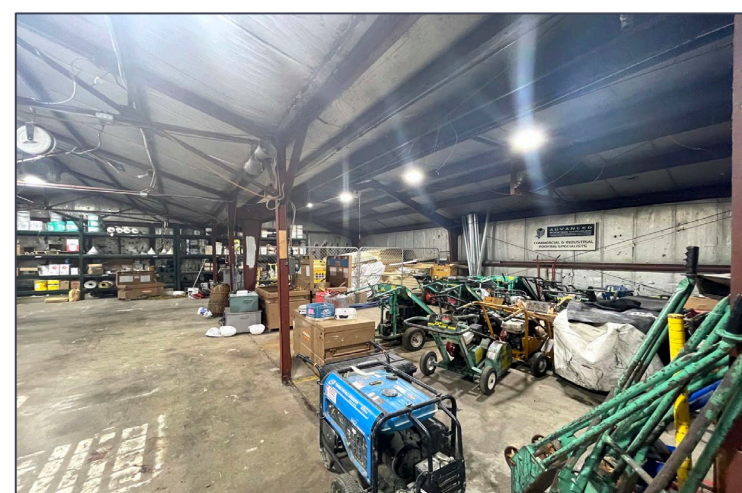
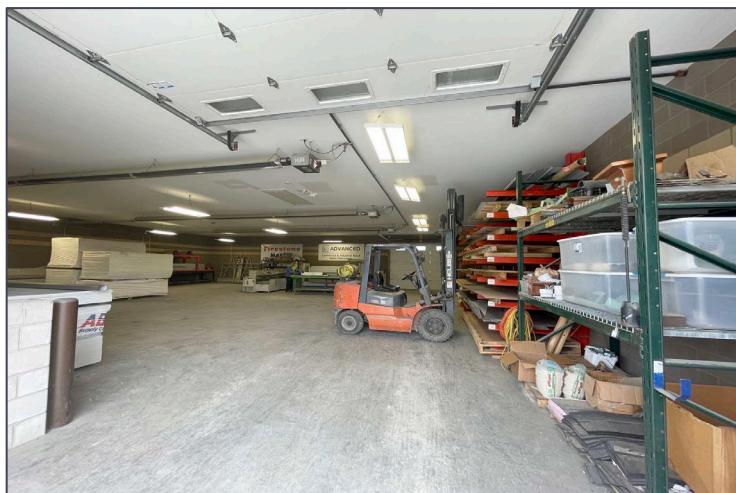
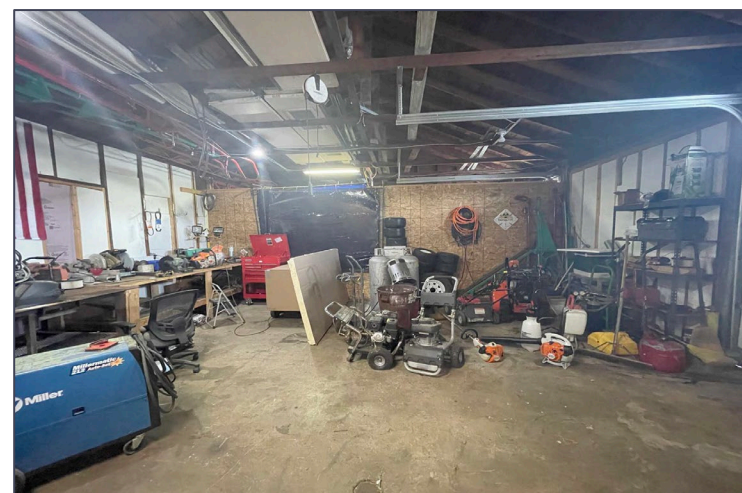
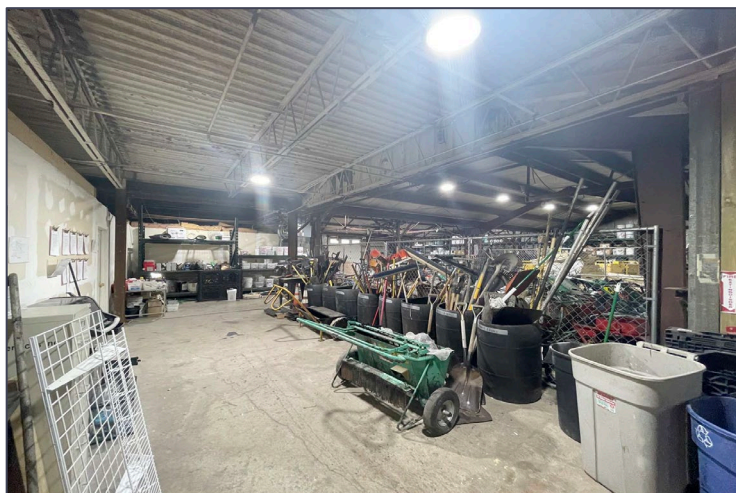
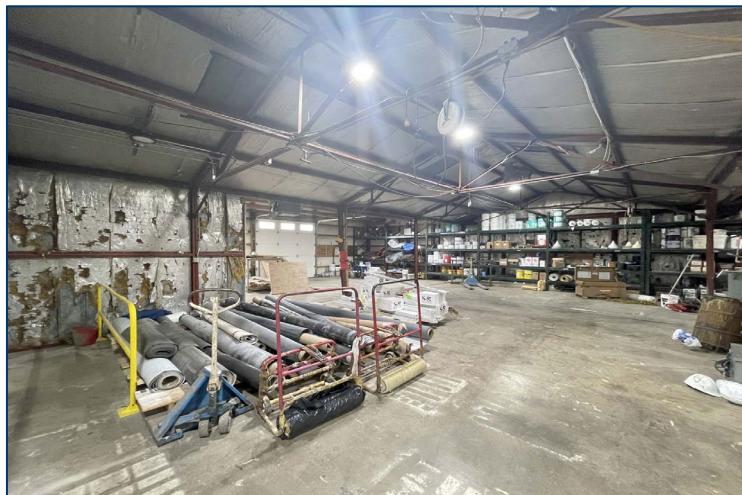
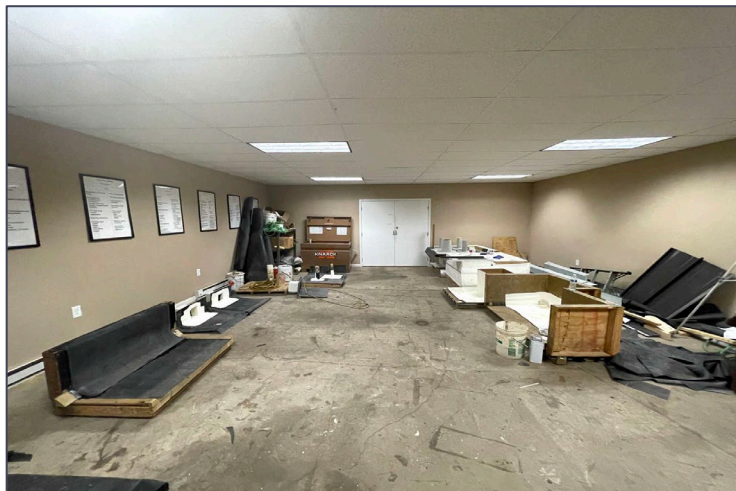
For more information, please contact:

MEGAN MALCZEWSKI, CCIM, SIOR
(419) 215 1008
mmalczewski@signatureassociates.com

SIGNATURE ASSOCIATES
7150 Granite Circle, Suite 200
Toledo, Ohio 43617
www.signatureassociates.com

203, 205, 221 & 223 Sophia St., Maumee, OH 43537
Industrial Building For Sale or Lease

9,427
Square Feet
AVAILABLE



For more information, please contact:

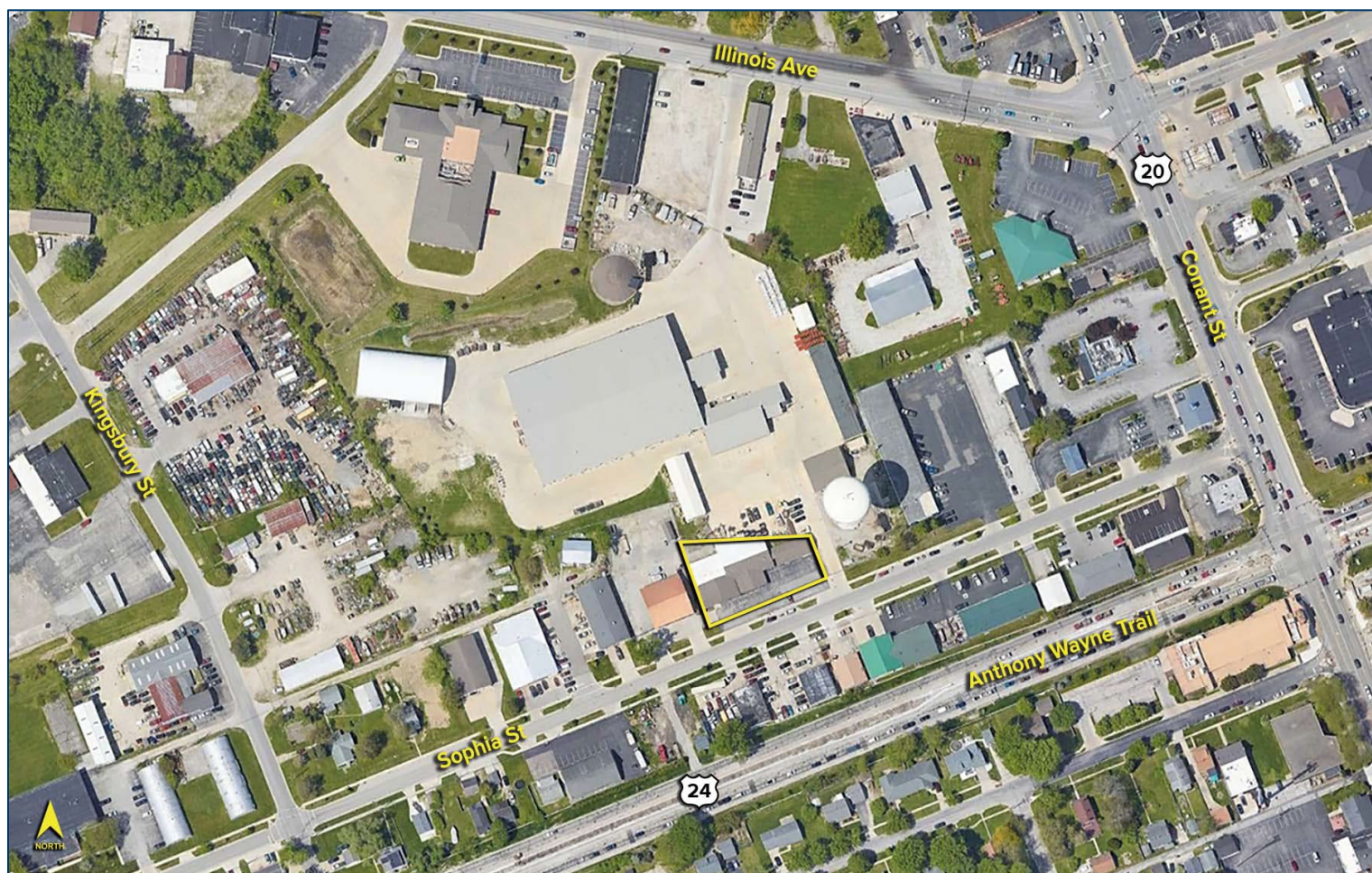
MEGAN MALCZEWSKI, CCIM, SIOR
(419) 215 1008
mmalczewski@signatureassociates.com

SIGNATURE ASSOCIATES
7150 Granite Circle, Suite 200
Toledo, Ohio 43617
www.signatureassociates.com

203, 205, 221 & 223 Sophia St., Maumee, OH 43537

Industrial Building For Sale or Lease

9,427
Square Feet
AVAILABLE



UTILITIES

Electric:	Toledo Edison
Gas:	Columbia Gas
Water:	City of Maumee
Sanitary Sewer:	City of Maumee
Storm Sewer:	City of Maumee

For more information, please contact:

MEGAN MALCZEWSKI, CCIM, SIOR

(419) 215 1008

mmalczewski@signatureassociates.com

SIGNATURE ASSOCIATES

7150 Granite Circle, Suite 200

Toledo, Ohio 43617

www.signatureassociates.com

Information is subject to verification and no liability for errors or omissions is assumed. Price is subject to change and listing withdrawal.