

Available – 47,000 SF Warehouse on Large Gated Site by I-55 & Harlem Ave.

4.40 Acre Privately Located Land Site

6958 W. 60th Street, Chicago, IL 60638



OFFERING SUMMARY

Sale Price:	Contact Broker
Site Size:	4.40 Acres
Warehouse Size:	47,000 SF
Ward:	13 th (Alderman Quinn)
Zoning:	PMD 12

PROPERTY OVERVIEW

47,000 SF Warehouse on a 4.40 acre site in Chicago’s Clearing Industrial Area. Well located with easy access to I-55 via Harlem, the site is fully gated in a very private setting with 60th Street dead ending at the automated gated entrance to the site. Recently updated offices and new asphalt with major roof repairs undertaken. There are three (3) docks, two (2) drive-ins and ceiling heights from 16-18’ clear.

PROPERTY HIGHLIGHTS

- Large Fully Gated Site
- Very Privately Located
- Easy Access to I-55
- Recent Updates to Grounds and Facility

Contact:
Cesar Alvarez
cesar@chicagocommercial.com
773-524-2600

**Available – 47,000 SF Warehouse on Large
Gated Site by I-55 & Harlem Ave.**

4.40 Acre Privately Located Land Site

6958 W. 60th Street, Chicago, IL 60638



chicagocommercial.com



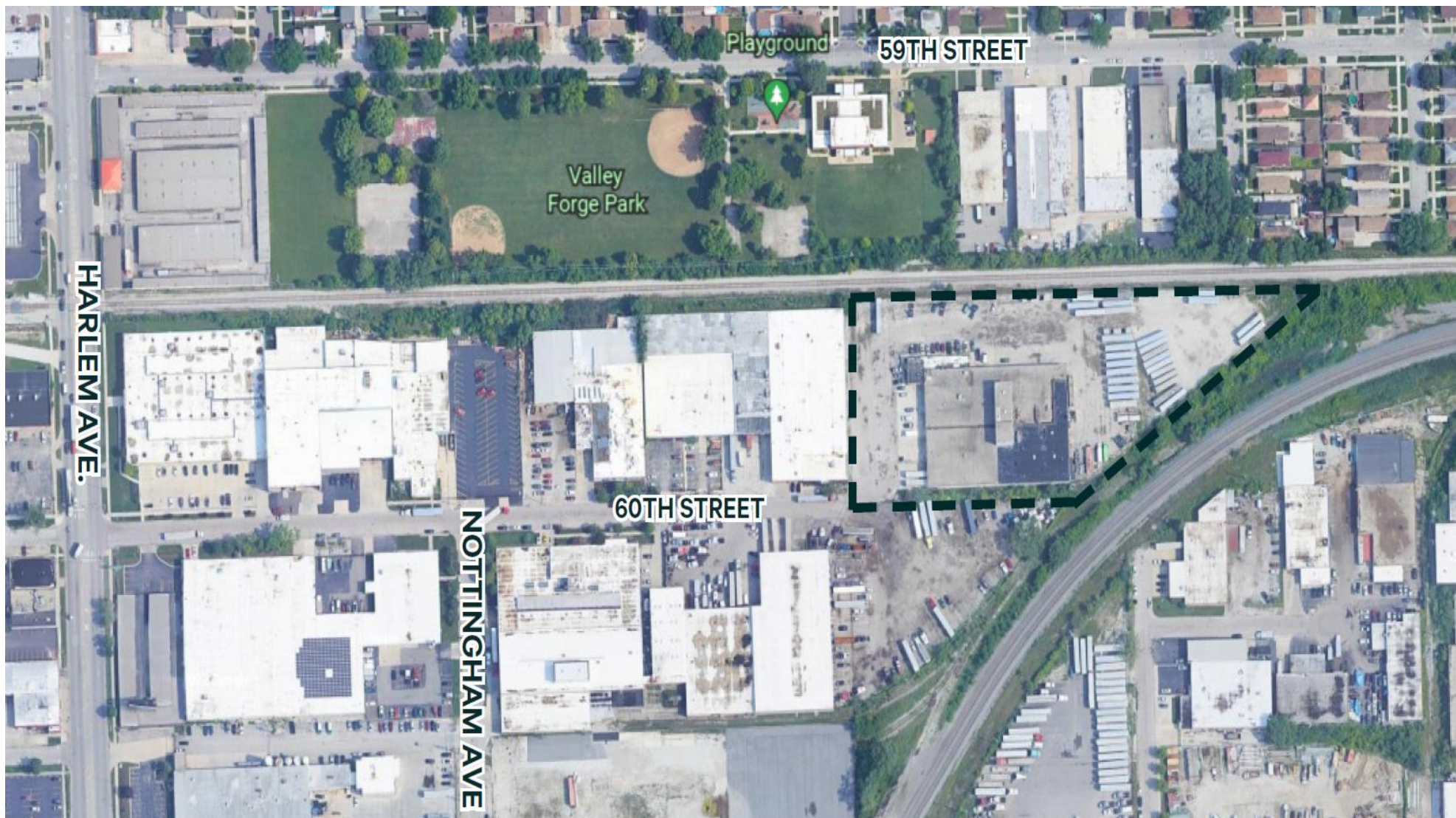
**Available – 47,000 SF Warehouse on Large
Gated Site by I-55 & Harlem Ave.**

4.40 Acre Privately Located Land Site

6958 W. 60th Street, Chicago, IL 60638



chicagocommercial.com



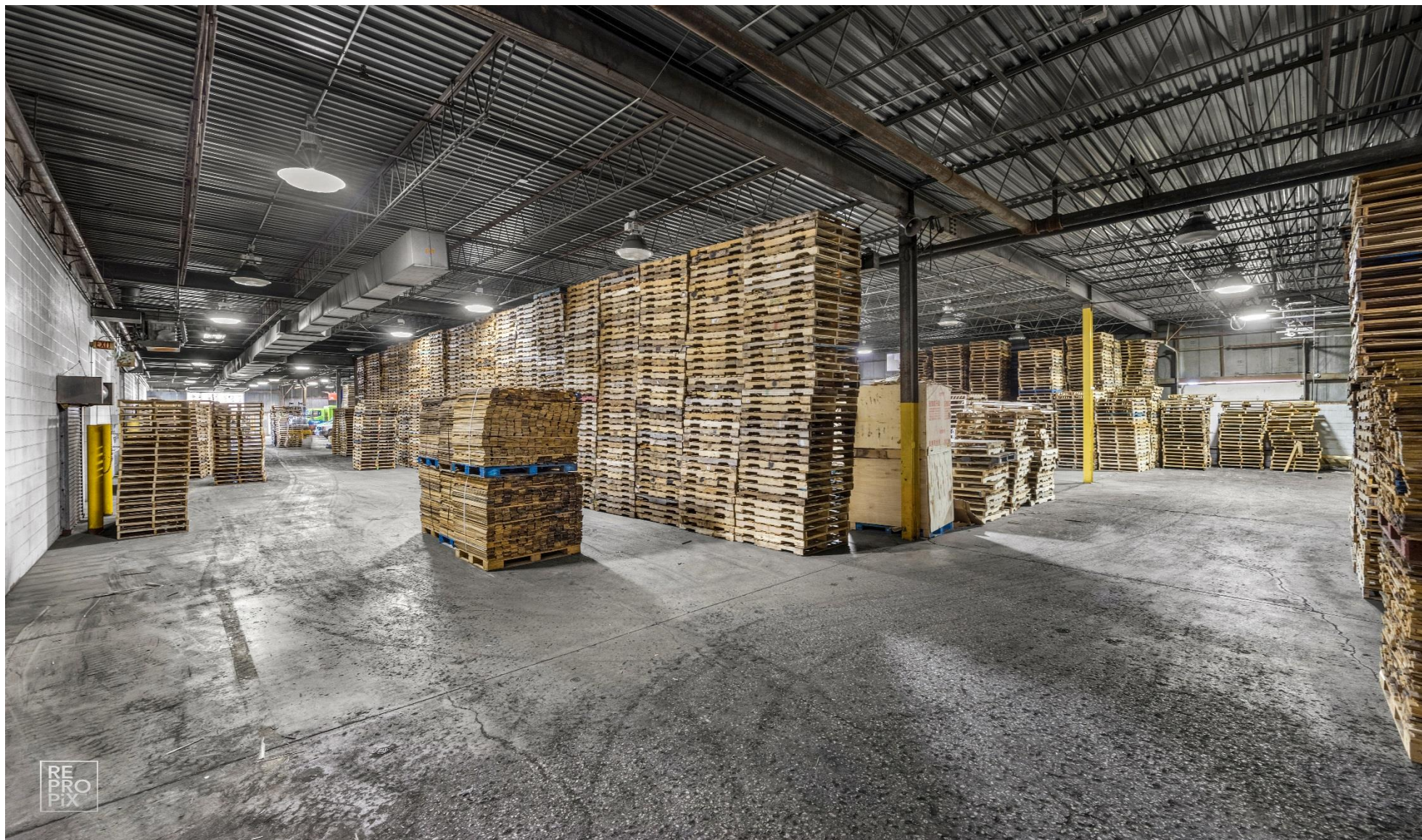
***Available – 47,000 SF Warehouse on Large
Gated Site by I-55 & Harlem Ave.***

4.40 Acre Privately Located Land Site

6958 W. 60th Street, Chicago, IL 60638



chicagocommercial.com



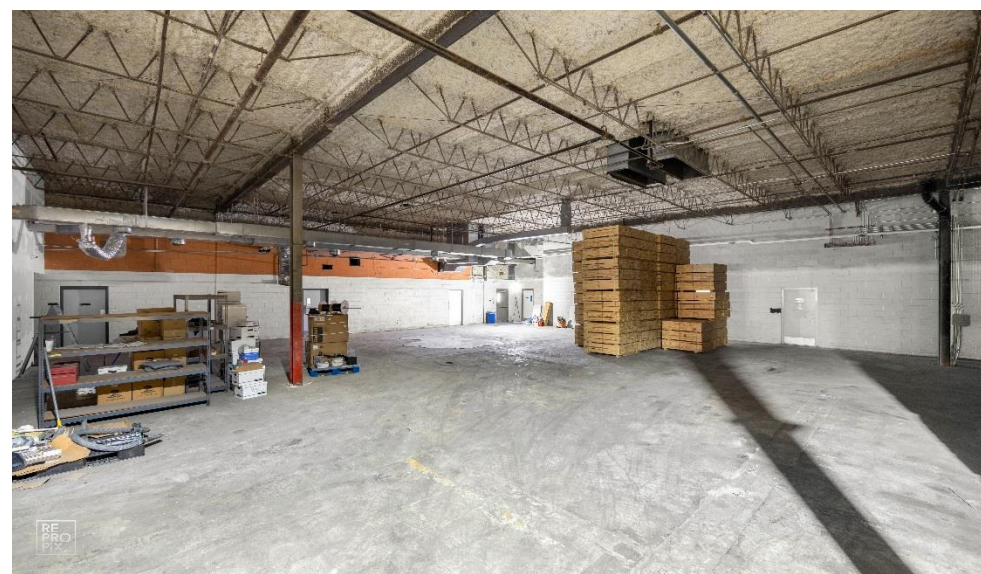
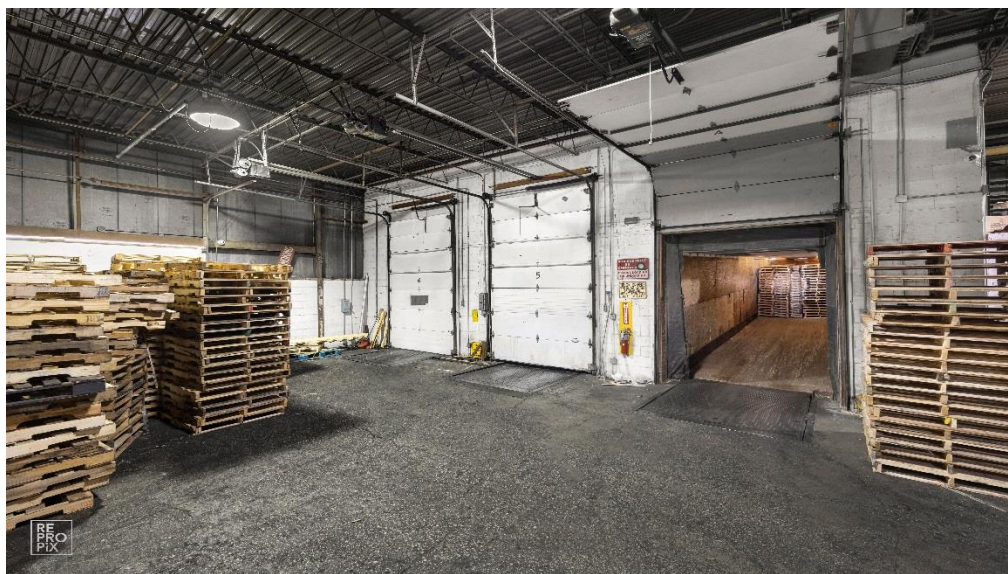
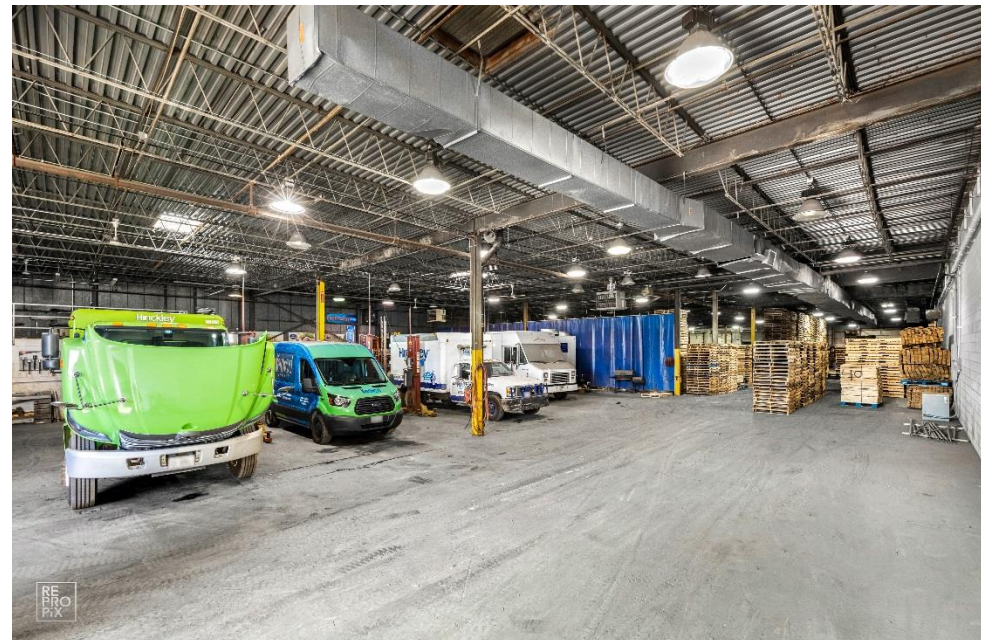
Available – 47,000 SF Warehouse on Large Gated Site by I-55 & Harlem Ave.

4.40 Acre Privately Located Land Site

6958 W. 60th Street, Chicago, IL 60638



chicagocommercial.com



**Available – 47,000 SF Warehouse on Large
Gated Site by I-55 & Harlem Ave.**

4.40 Acre Privately Located Land Site

6958 W. 60th Street, Chicago, IL 60638



chicagocommercial.com

