

▶ ROCHESTER BUSINESS CENTER

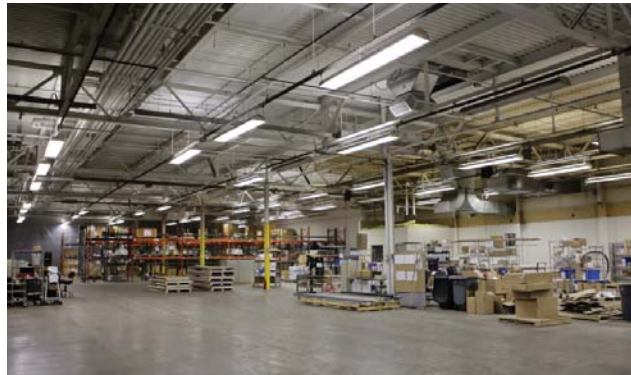
465 PAUL ROAD, CHILI, NY 14624

Rochester Business Center offers warehouse/distribution and manufacturing space in a campus-type setting just minutes to expressways and downtown Rochester. This former Bausch & Lomb Frame Center in the Town of Chili has plentiful on-site parking.

Current Availabilites:

- 69,000 - 83,599 SF space with 5 docks
- 2,401 SF of office space

A floor plan follows.



83,599 SF
AVAILABLE



WEST
SIDE



ON-SITE
PARKING



CONTACT ADAM BORRELL

(585) 287-5861

aborrell@buckprop.com



BUCKINGHAM
PROPERTIES

Real Estate...*Reimagined.*

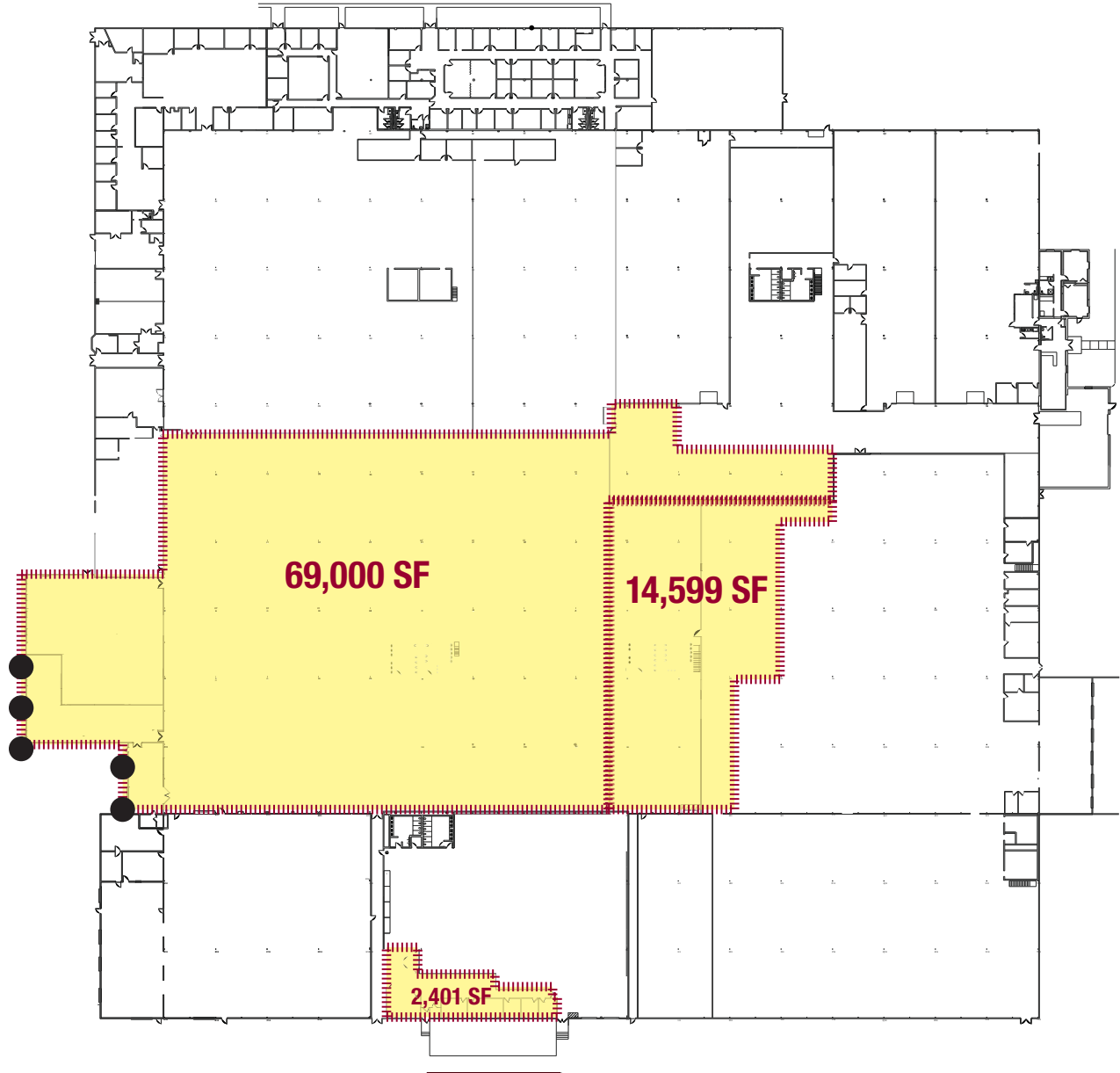
T: (585) 295-9500

www.buckprop.com

▶ ROCHESTER BUSINESS CENTER

465 PAUL ROAD, CHILI, NY 14624

● DOCK



CONTACT ADAM BORRELL

(585) 287-5861

aborrell@buckprop.com



**BUCKINGHAM
PROPERTIES**