

For Lease

**4115 University Blvd. W.
Jacksonville, Florida 32217
Warehouse Space - Southside Submarket**



21,600 sq.ft.



Contact:
Brian Pate
(904) 356-2228
bpate@escresults.com

Easton, Sanderson & Company

Industrial - Commercial R.E. Sales, Leasing & Management

300 E. State Street (Suite G) Jacksonville, FL. 32202

www.escresults.com Licensed Real Estate Brokers



For Lease

**4115 University Blvd. W.
Jacksonville, Florida 32217
Warehouse Space - Southside Submarket**



- 21,600 sq.ft. Warehouse
- **AVAILABLE: November 2024**
- Great Southside location
- (2) Grade Level Doors
- (1) Truck well (dock high)
- Nice Offices & showroom
- Zoned IL
- 16' Ceiling Height
- Multiple Restroom
- 200 Amp 3 Phase Power
- Ample parking

**Lease Rate: \$7.00 PSF
CAM – \$1.20 PSF**

Contact:
Brian Pate
(904) 356-2228
bpate@escresults.com

Easton, Sanderson & Company

Industrial - Commercial R.E. Sales, Leasing & Management

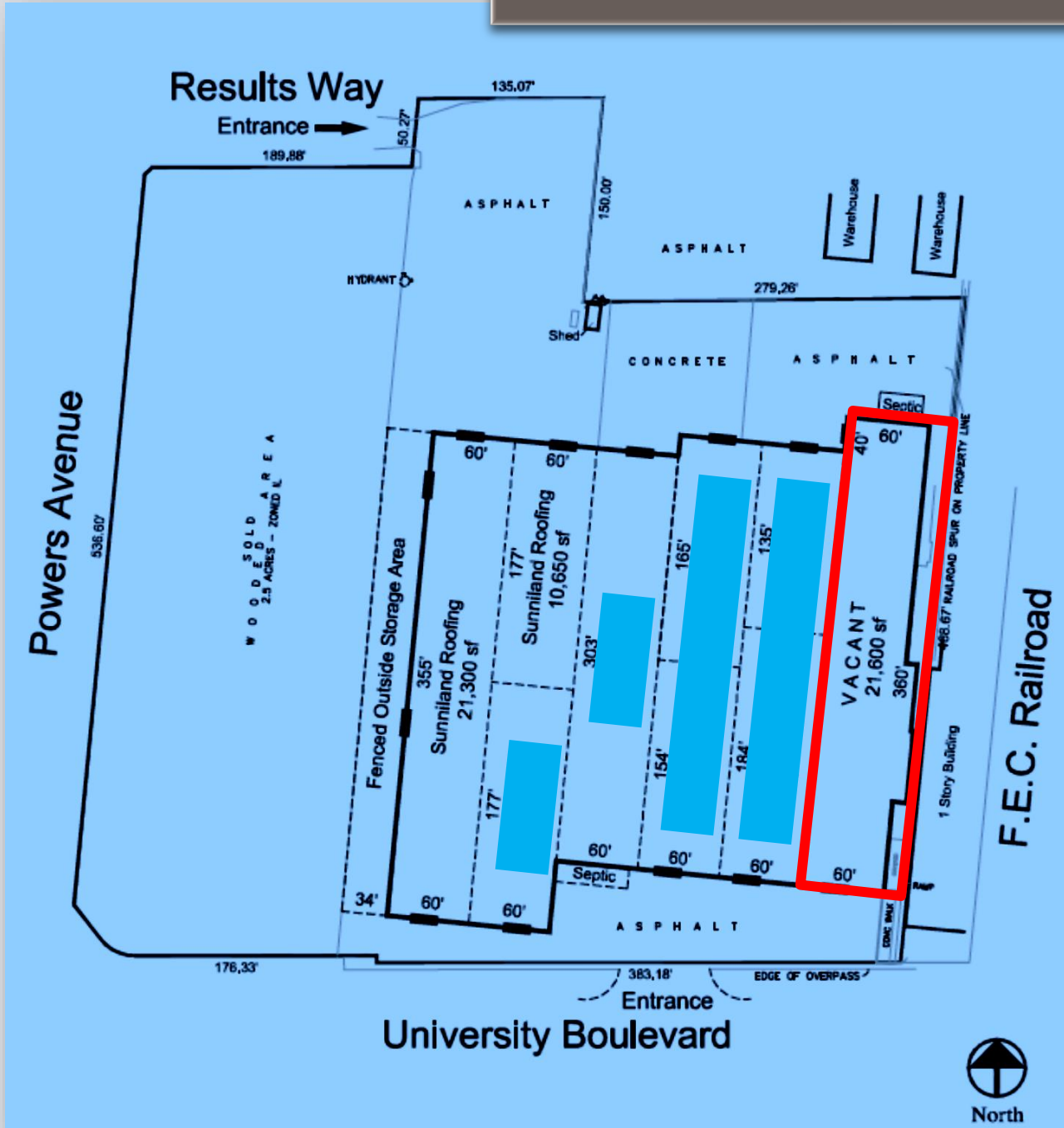
300 E. State Street (Suite G) Jacksonville, FL. 32202

www.escresults.com Licensed Real Estate Brokers



For Lease

4115 University Blvd. W.
Jacksonville, Florida 32217
Warehouse Space - Southside Submarket



Contact:
Brian Pate
(904) 356-2228
bpate@esresults.com

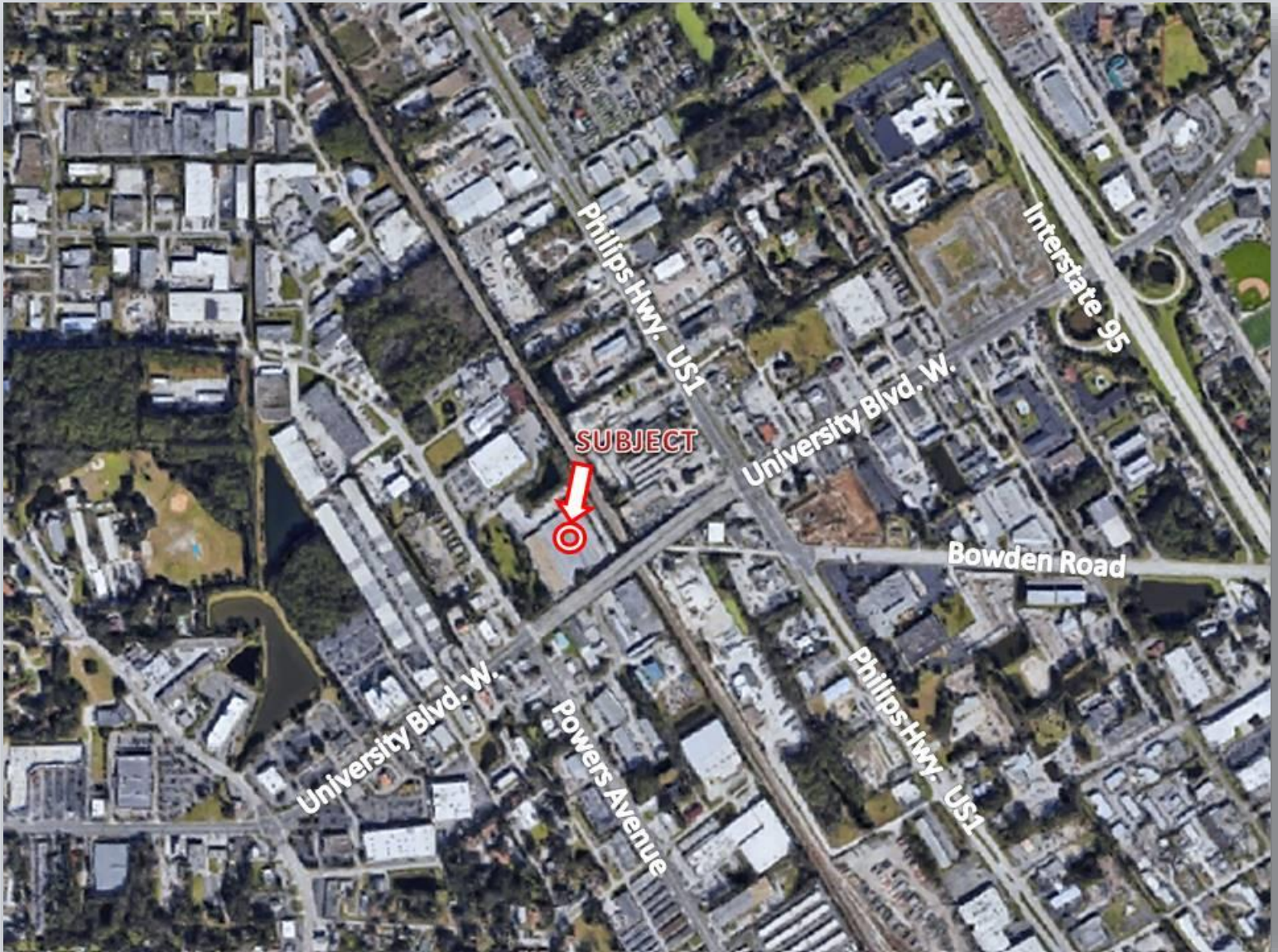
Easton, Sanderson & Company

Industrial - Commercial R.E. Sales, Leasing & Management
300 E. State Street (Suite G) Jacksonville, FL. 32202
www.esresults.com Licensed Real Estate Brokers



For Lease

**4115 University Blvd. W.
Jacksonville, Florida 32217**
Warehouse Space - Southside Submarket



Contact:
Brian Pate
(904) 356-2228
bpate@esresults.com

Easton, Sanderson & Company

Industrial - Commercial R.E. Sales, Leasing & Management
300 E. State Street (Suite G) Jacksonville, FL. 32202
www.esresults.com Licensed Real Estate Brokers

