

FLAGSHIP RETAIL FOR LEASE AT SIX-CORNER INTERSECTION OF IRVING PARK/CICERO/MILWAUKEE



Flagship retail space located at the extremely well-traveled six-corner intersection of Irving Park/Cicero/Milwaukee. This is an amazing opportunity to lease a space with some of the greatest visibility in any Chicago neighborhood! Traffic count of 68,000 vehicles per day.

TRAFFIC COUNTS:

30,000+ VPD—Irving Park Road
27,000+ VPD—Cicero Avenue
11,000+ VPD—Milwaukee Ave
68,000+VPD TOTAL!

SPACE SIZE:	±4,864 SF
LEASE PRICE:	\$16 PSF
LEASE TYPE:	NNN
TAXES:	\$4.25 PSF Approx.
ZONING:	B1-3



MJ WEINBERGER
847-334-2587
MJ@STRAUSSREALTY.COM

STRAUSS REALTY, LTD.
4350 N. MILWAUKEE AVE.
CHICAGO, ILLINOIS 60641
PHONE: 773-736-3600

STRAUSS

REALTY, LTD.

4801 W. IRVING PARK RD.
CHICAGO, IL 60641

FLAGSHIP RETAIL FOR LEASE AT SIX-CORNER INTERSECTION OF IRVING PARK/CICERO/MILWAUKEE



Amazing 6-corner location with multiple new construction developments and many national retailers and franchises in the area, including:

Target	Petsmart	Chipotle
Ross Dress for Less	Famous Footwear	T-Mobile Store
Six Corners Plaza	Domino's	Sears Appliance Repair
Rasenick's Workwear	Chase Bank	
Marshalls	Dollar General	



MJ WEINBERGER

847-334-2587

MJ@STRAUSSREALTY.COM

STRAUSS REALTY, LTD.
4350 N. MILWAUKEE AVE.
CHICAGO, ILLINOIS 60641
PHONE: 773-736-3600

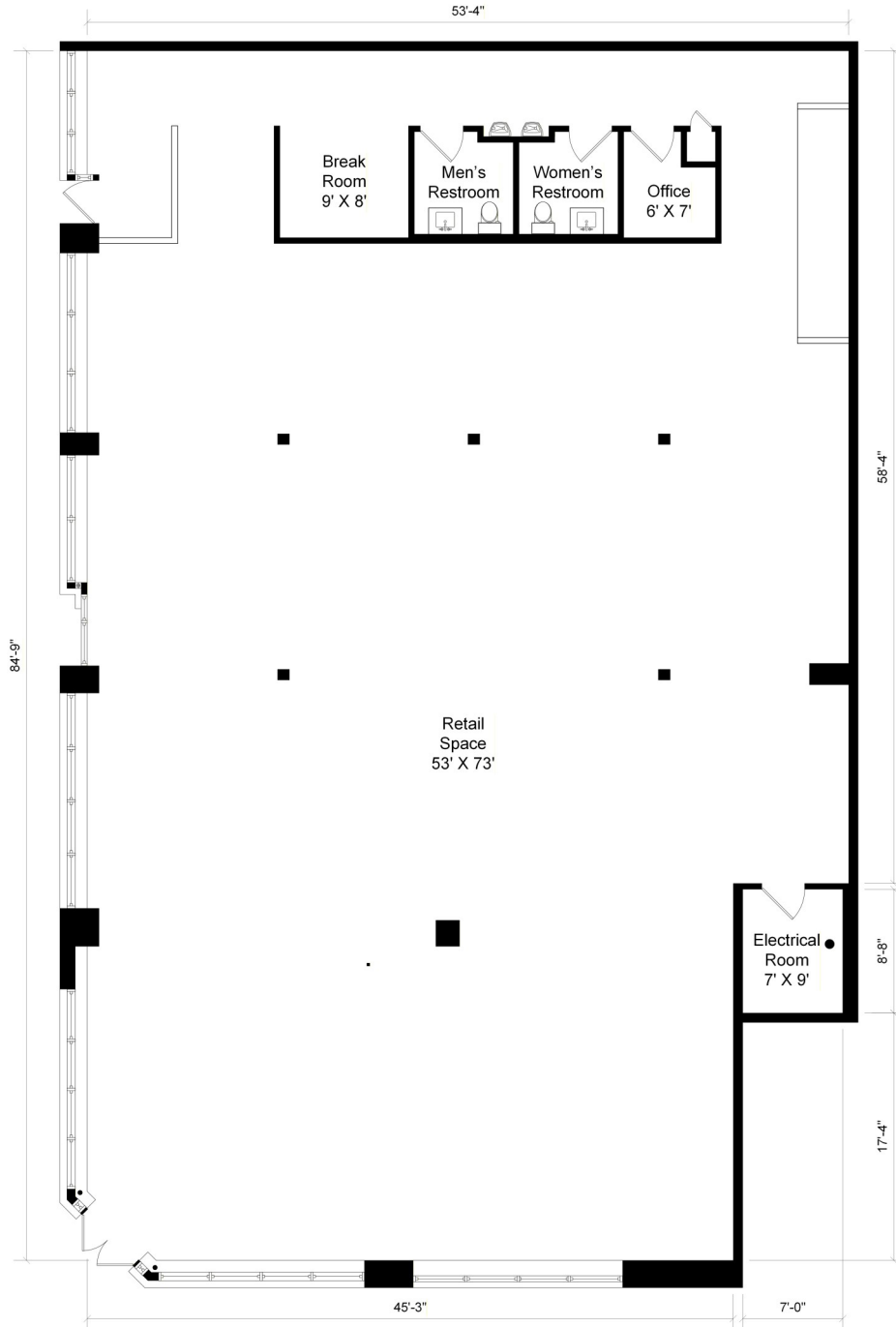
This flyer was produced using data from private and government sources deemed reliable. The information herein is provided without representation.

STRAUSS

REALTY, LTD.

4801 W. IRVING PARK RD.
CHICAGO, IL 60641

FLOOR PLAN



MJ WEINBERGER

847-334-2587

MJ@STRAUSSREALTY.COM

STRAUSS REALTY, LTD.
4350 N. MILWAUKEE AVE.
CHICAGO, ILLINOIS 60641
PHONE: 773-736-3600

This flyer was produced using data from private and government sources deemed reliable. The information herein is provided without representation.