

RETAIL FOR LEASE STOCKTON PLAZA

2309-2415 W. HAMMER LANE, STOCKTON, CA



LISTING DATA

LOCATION: 2339 W. Hammer Lane,
Stockton, CA

AVAILABLE SPACE: 3,703± square feet
Former Medical Office
AVAILABLE MAY 2024!

FEATURES:

- Dominant neighborhood grocery anchored shopping center in North Stockton, California
- The center is located directly across the street from Sutter Gould's Stockton Medical Plaza, a 70,000sf 3-story medical facility, which generates additional foot traffic in the shopping center.
- The center offers exceptional parking, access and visibility to Hammer Lane, a primary thoroughfare in Stockton!
- Successful national tenants include: Food Source, Auto Zone, Great Clips, and McDonalds



DEMOGRAPHICS AND TRAFFIC COUNTS

DEMOGRAPHICS:	1 MILE	2 MILES	3 MILES
Population:	21,442	81,531	135,819
Average HH Income:	\$102,352	\$97,529	\$102,404

TRAFFIC COUNTS:

Hammer Lane: 47,306± Cars ADT
Don Avenue: 15,878± Cars ADT



ECONOMIC DATA

LEASE RATE: Call for lease rate

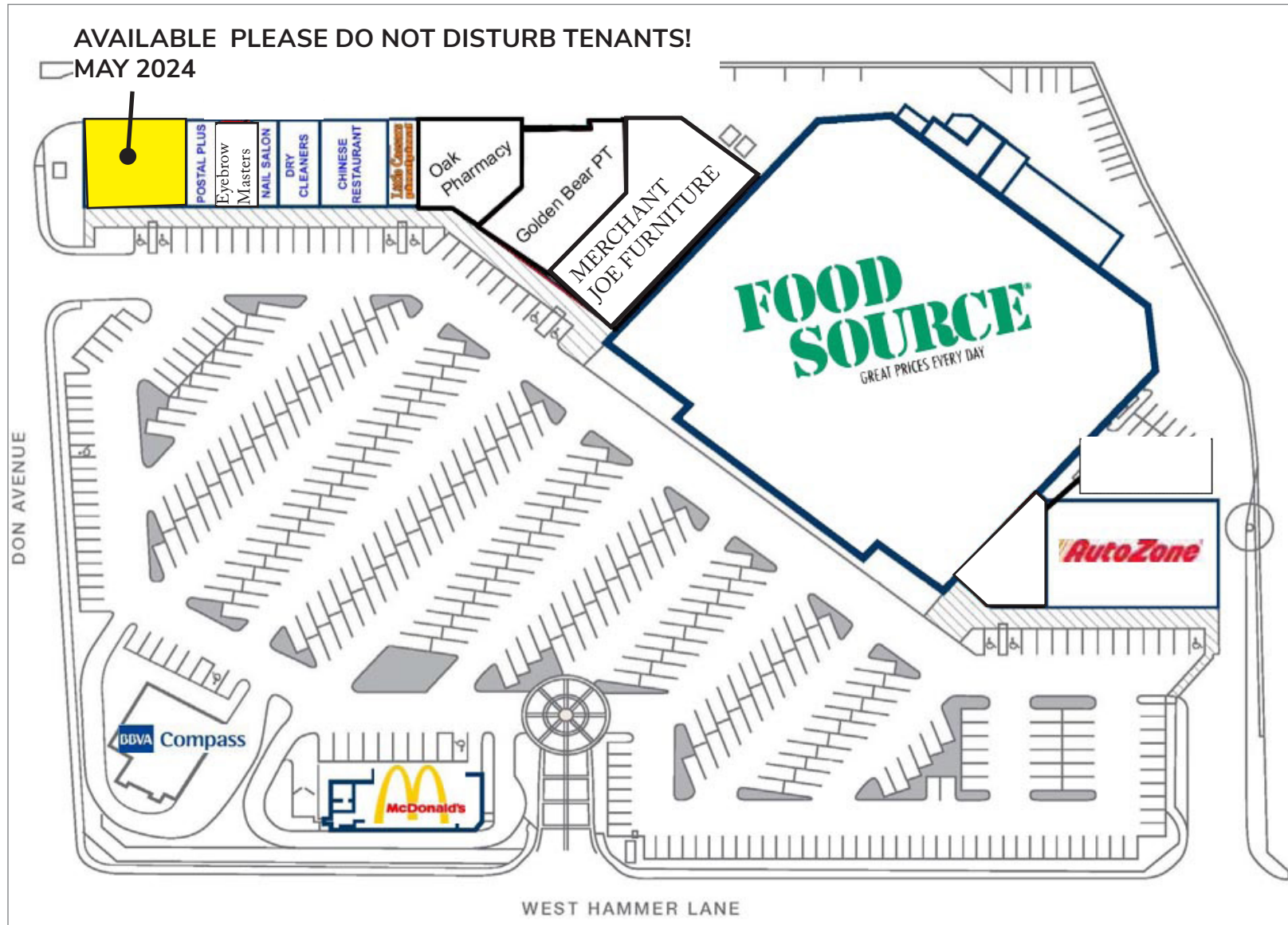
CONTACT

Christopher W. Sill
BRE #01188616
csill@lee-associates.com
D 209.983.6837

All information furnished regarding property for sale, rental or financing is from sources deemed reliable, but no warranty or representation is made to the accuracy thereof and same is submitted to errors, omissions, change of price, rental or other conditions prior to sale, lease or financing or withdrawal without notice. No liability of any kind is to be imposed on the broker herein.

RETAIL FOR LEASE STOCKTON PLAZA

2309-2415 W. HAMMER LANE, STOCKTON, CA



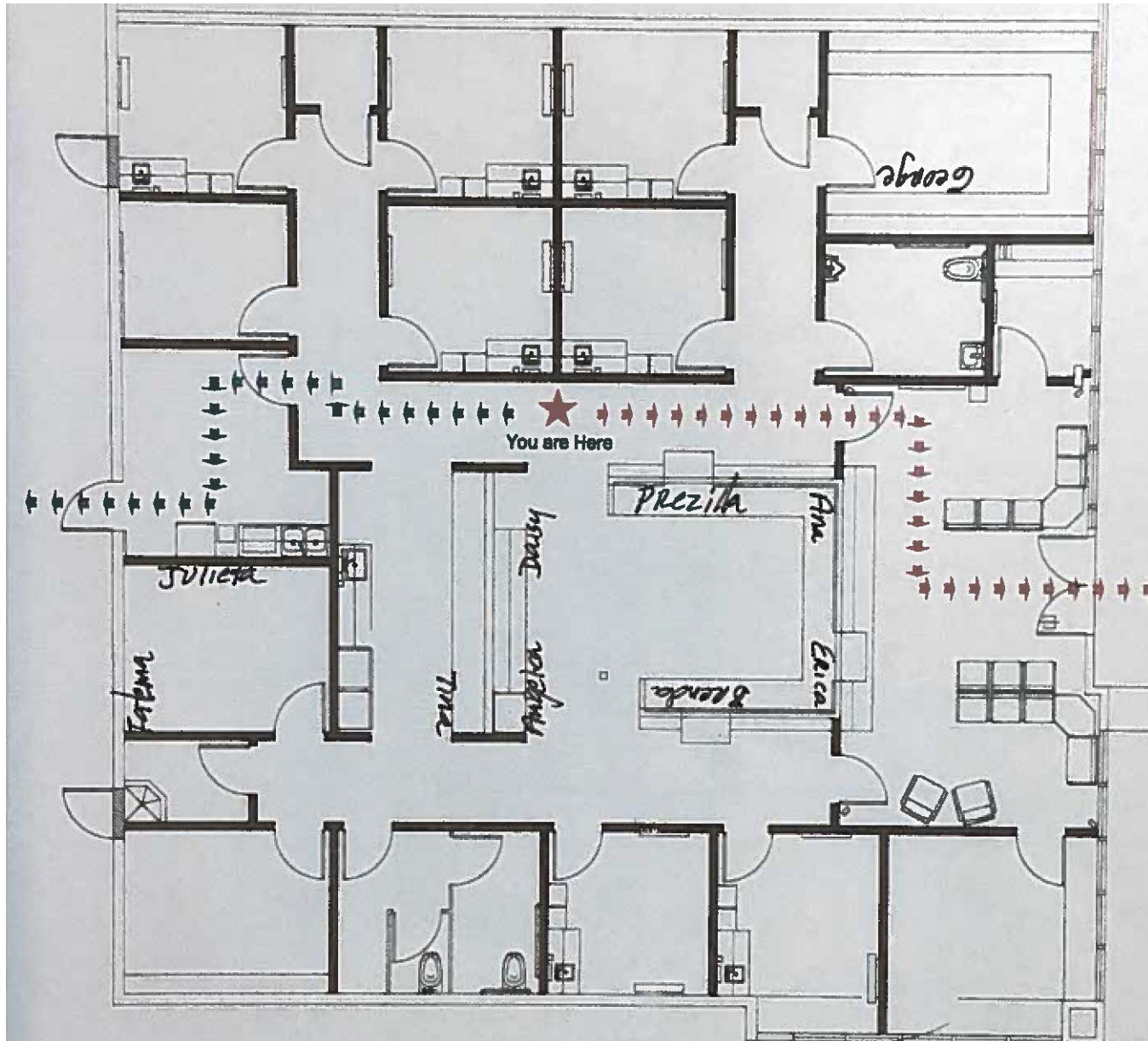
All information furnished regarding property for sale, rental or financing is from sources deemed reliable, but no warranty or representation is made to the accuracy thereof and same is submitted to errors, omissions, change of price, rental or other conditions prior to sale, lease or financing or withdrawal without notice. No liability of any kind is to be imposed on the broker herein.

RETAIL FOR LEASE
STOCKTON PLAZA

2309-2415 W. HAMMER LANE, STOCKTON, CA



FLOOR PLAN

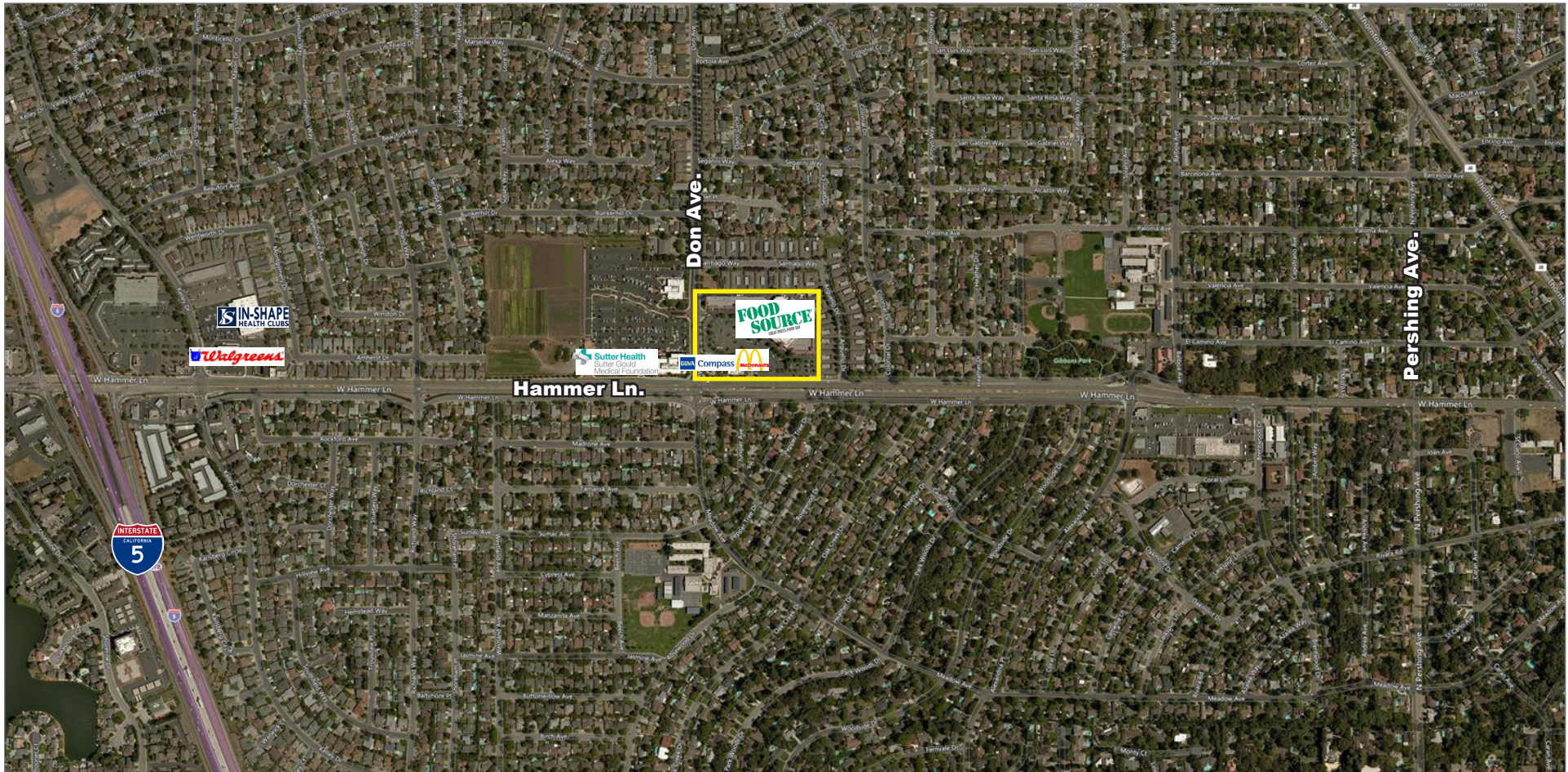


CONTACT

Christopher W. Sill
BRE #01188616
csill@lee-associates.com
D 209.983.6837

RETAIL FOR LEASE STOCKTON PLAZA

2309-2415 W. HAMMER LANE, STOCKTON, CA



CONTACT

Christopher W. Sill
BRE #01188616
csill@lee-associates.com
D 209.983.6837

All information furnished regarding property for sale, rental or financing is from sources deemed reliable, but no warranty or representation is made to the accuracy thereof and same is submitted to errors, omissions, change of price, rental or other conditions prior to sale, lease or financing or withdrawal without notice. No liability of any kind is to be imposed on the broker herein.