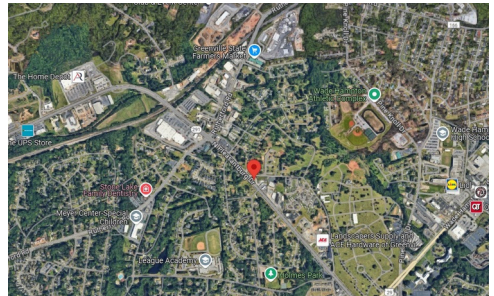


# Office for Sale

1908 N Pleasantburg Dr (Hwy 291)

Price:  
**\$449,500**



**Corner property on highly traveled N. Pleasantburg Drive (Hwy 291) in Greenville, South Carolina. Close to Wade Hampton (Hwy 29), Rutherford Road, North Main area, and Cherrydale.**

- **Size:** 1,200 sf office on .43 acres
- **Billboard Income:** \$8,000 annually
- **Zoning:** C-2 (Greenville County and adjacent to city limits of Greenville).
- **Traffic Count:** 34,000 vpd (GCGIS 2021)
- **Floor plan:** 3-5 offices plus kitchen and storage

**Matt Carter, SIOR, CCIM**

864-313-9078

[mcarter@joynercommercial.com](mailto:mcarter@joynercommercial.com)

[www.JoynerCommercial.com](http://www.JoynerCommercial.com)



## Additional Information

(floorplan, plat, photos, more)

**BERKSHIRE  
HATHAWAY**  
HOMESERVICES

C. DAN JOYNER,  
REALTORS®

COMMERCIAL DIVISION

Berkshire Hathaway HomeServices C. Dan Joyner, REALTORS  
230 Buist Avenue Greenville, SC 29609

©2024 BHH Affiliates, LLC. Real Estate Brokerage Services are offered through the network member franchisees of BHH Affiliates, LLC. Most franchisees are independently owned and operated. Berkshire Hathaway HomeServices and the Berkshire Hathaway HomeServices symbol are registered service marks of Columbia Insurance Company, a Berkshire Hathaway affiliate. Information not verified or guaranteed. If your property is currently listed with a Broker, this is not intended as a solicitation. Equal Housing Opportunity.