

FOR SALE - 7 Story Mixed Use Building

Office, Storage and Residential Apartments

192 Erie Boulevard, Schenectady, NY 12305



FOR SALE
\$7,900,000

Property Highlights

- Building Size: +/- 66,167 SF
- Availability:
 - 1st Floor: +/- 4,824 SF | \$15 / SF
 - 2nd Floor: +/- 9,630 SF | \$15 / SF
 - GF: +/- 1,200 SF office / flex | \$10 / SF
 - GF: +/- 2,000 SF Storage / garage | \$7 / SF
- Frontage: 181'
- Year Built: 1970 / Renovated in 2021
- HVAC: Gas-fired RTU's / Central AC
- Elevators: 2 Passenger Elevators
- Parking: 60 Paved & Lighted Spaces / 3:1 Parking Ratio to Office Tenants
- Permitted Uses: Office, Medical Office, Retail, Daycare, Cultural/Community Facilities, Schools, & Restaurants.
- Residential Units: Floors 4-7

Property Information

Recently renovated 7 story mixed use building located on Erie Blvd, one of the primary gateways into downtown Schenectady. Floors 1-3 are commercial office and flex space with floors 4-7 converted into apartments. Office suites ranging from 1200 SF to 9630 SF and up to 2000 SF storage space w/ loading docks. Great central location to attract and retain staff. Easy highway access for clients. Staff can walk to restaurants, banking, shopping and after work, entertainment venues. Building has off-street parking. Locally owned and managed by an experienced and respected landlord.

Felton McLaughlin, CCIM, SIOR
o: 518 465 1400 Ext. 208
c: 518 428 1164
e: fmclaughlin@naiplatform.com



James "Jay" Verro, CCIM
o: 518 465 1400 Ext. 214
c: 518 369 5048
e: jverro@ccim.net



14 Corporate Woods Blvd, Albany NY, 12211



518 465 1400



naiplatform.com



Interior Pictures - Commercial:



14 Corporate Woods Blvd, Albany NY, 12211



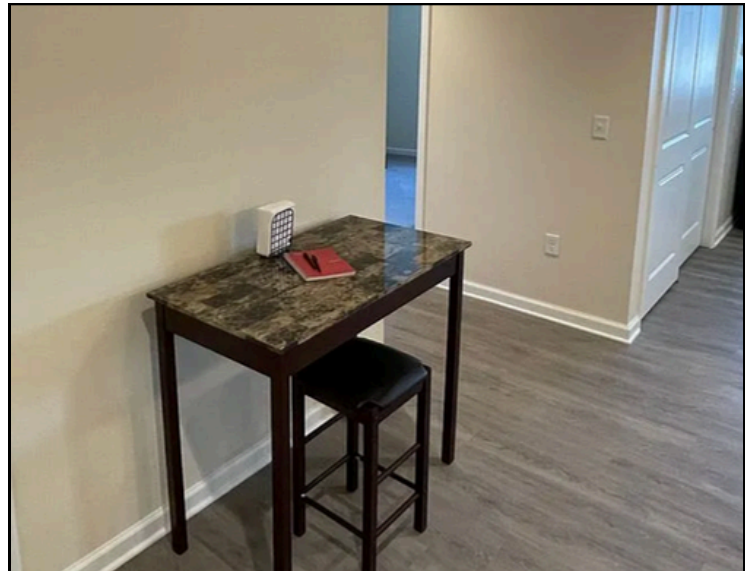
518.465.1400



naplatform.com

NAIPlatform

Interior Pictures - Residential:



14 Corporate Woods Blvd, Albany NY, 12211



518.465.1400



naplatform.com

NAIPlatform

Outdoor Terrace by 2nd Floor Entrance:

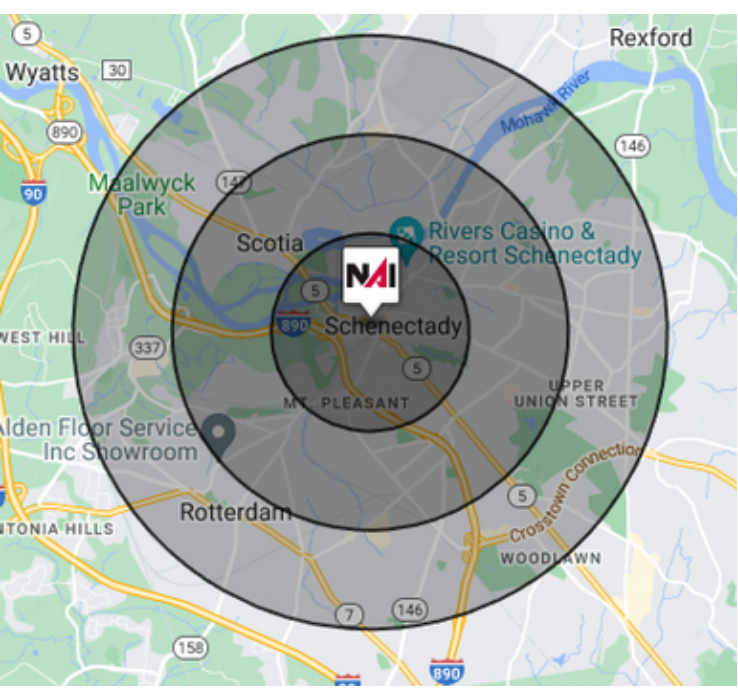


Exterior of Building:





Demographics Of Surrounding Area



	1 Miles	2 Miles	3 Miles
Total households	7,142	27,014	43,556
Total population	18,757	67,302	106,413
Population white	41.1%	46.1%	56.2%
Population black	28.4%	21.8%	16.5%
Population hispanic	14.7%	13.2%	10.9%
Population asian	6.4%	6.7%	6.3%
Population pacific islander	0.2%	0.2%	0.1%
Population american indian	1.4%	1.4%	1.0%
Population other	10.2%	10.2%	7.7%
Persons per household	2.6	2.5	2.4
Average household income	\$64,537	\$75,159	\$85,935
Average house value	\$220,766	\$208,299	\$223,139
Average age	37	39	40
Average age male	36	37	38
Average age female	38	40	41

We obtained the information above from sources we believe to be reliable. However, we have not verified its accuracy and make no guarantee, warranty or representation about it. It is submitted subject to the possibility of errors, omissions, change of price, rental or other conditions, prior sale, lease or financing, or withdrawal without notice. We include projections, opinions, assumptions or estimates for example only, and they may not represent current or future performance of the property. You and your tax and legal advisors should conduct your own investigation of the property and transaction.