



# Office/Retail Space in Lake Worth, FL

NEWLY RENOVATED RETAIL  
CENTER WITH UP TO 18,000  
SF FOR LEASE



32 S Dixie Hwy, Lake Worth, FL 33460

[View On Map](#)





# PROPERTY HIGHLIGHTS

Located on the prominent corner of Dixie Highway and 1<sup>st</sup> Ave. S. this high exposure corner property offers over 180 linear feet of frontage to Dixie Highway. Completely remodeled in 2025 the upgrades include new roof, new a/c, new LED lighting throughout, painted interior & exterior this 18,000 SQFT property includes the adjacent parking lot.

## Property Footage

- Approximately 18,000 square feet which can be leased as a single unit or divided
- 3,159 SF retail space, while the adjacent two-story building totals 15,000 SF, ideal for showroom, office, or creative space.

## Excellent Frontage and Visibility

- 20,000 Average cars per day
- 180 feet of frontage to Dixie Highway
- Corner property steps in close proximity to downtown Lake Worth

## Ample Parking

- The site includes 12 on-site parking spaces, with an adjacent lot providing 20+ additional spaces, ensuring ample parking for customers and staff.

## Newly Renovated in 2025

- Brand new rood installed
- State of the art HVAC system
- Modern LED lighting
- Fresh interior and exterior paint
- Delivering a move-in ready space for a variety of commercial uses

## Demographics

### 2024 Population

### Avg. Household Income

### 1 Mile

22,593

\$70,269

### 3 Miles

104,333

\$92,740

### 5 Miles

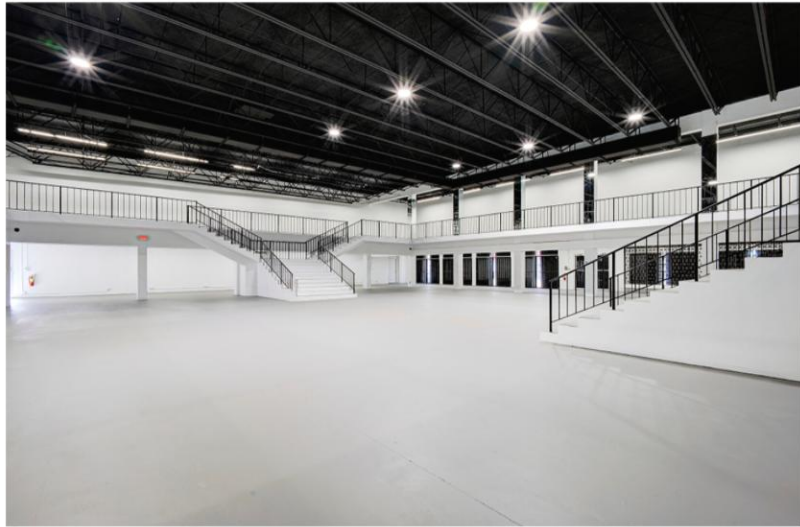
253,806

\$82,448





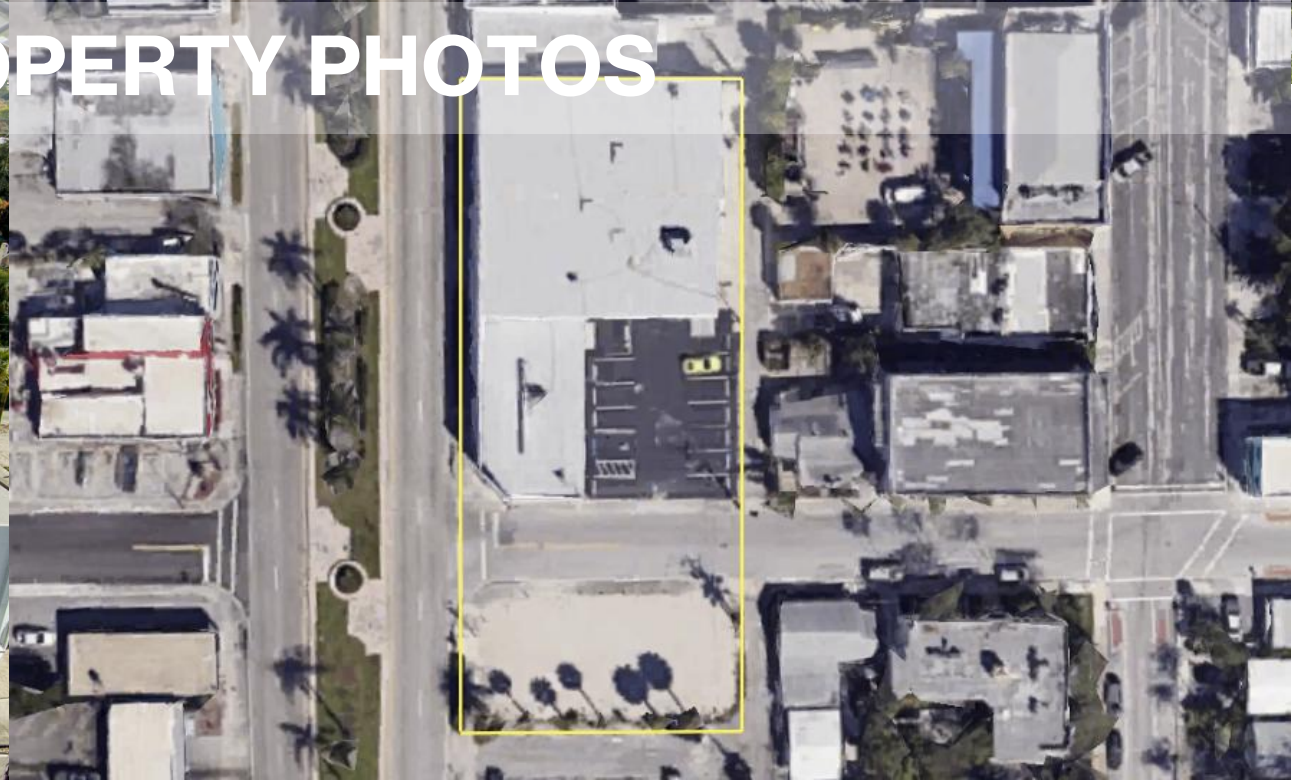
# PROPERTY PHOTOS







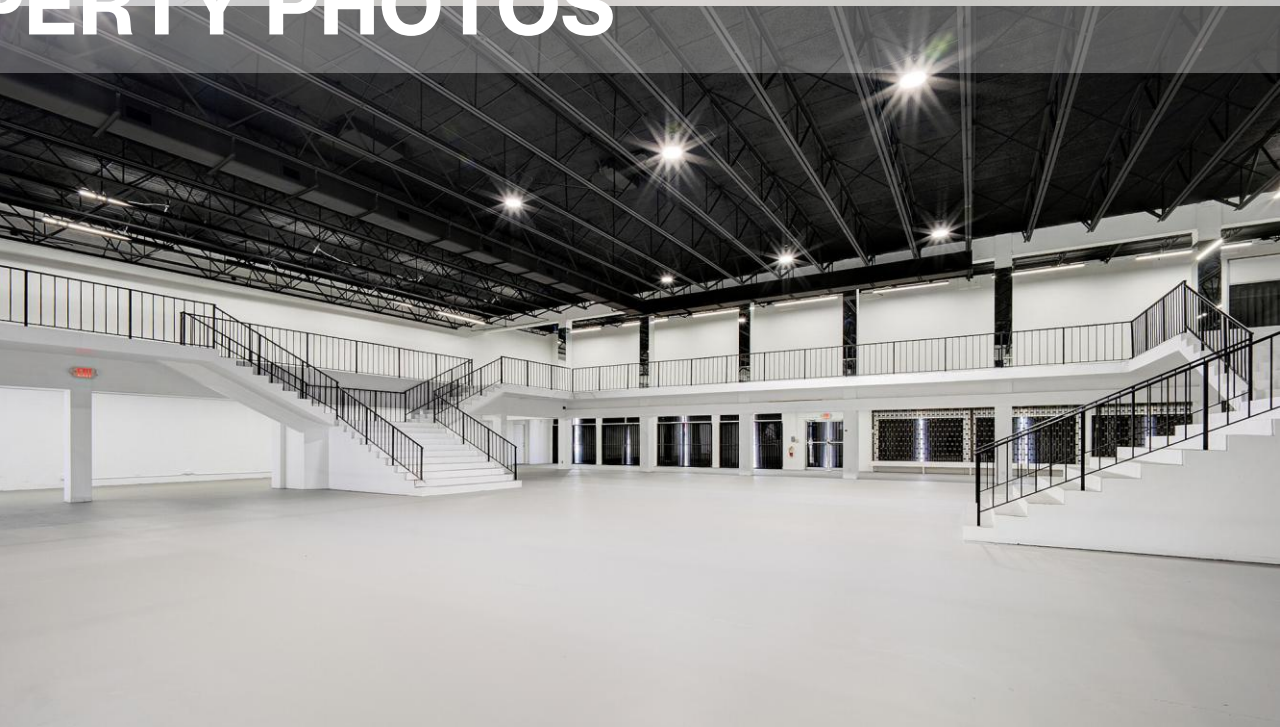
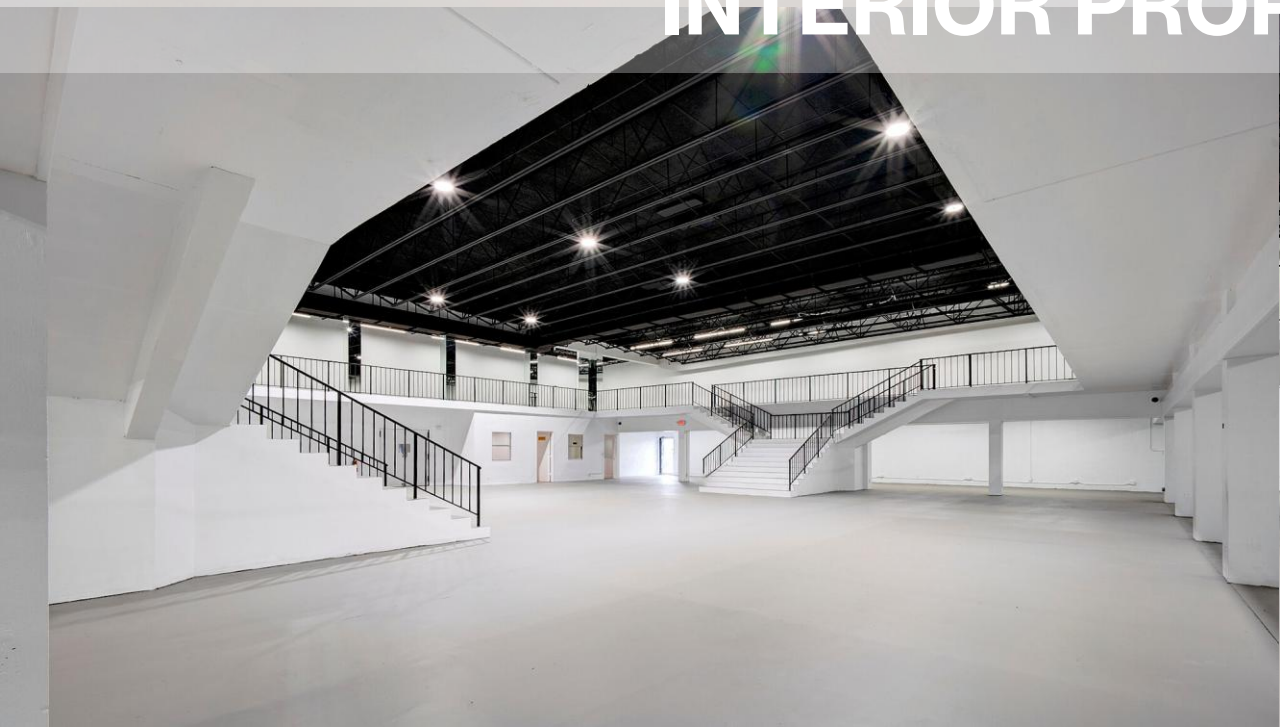
# EXTERIOR PROPERTY PHOTOS







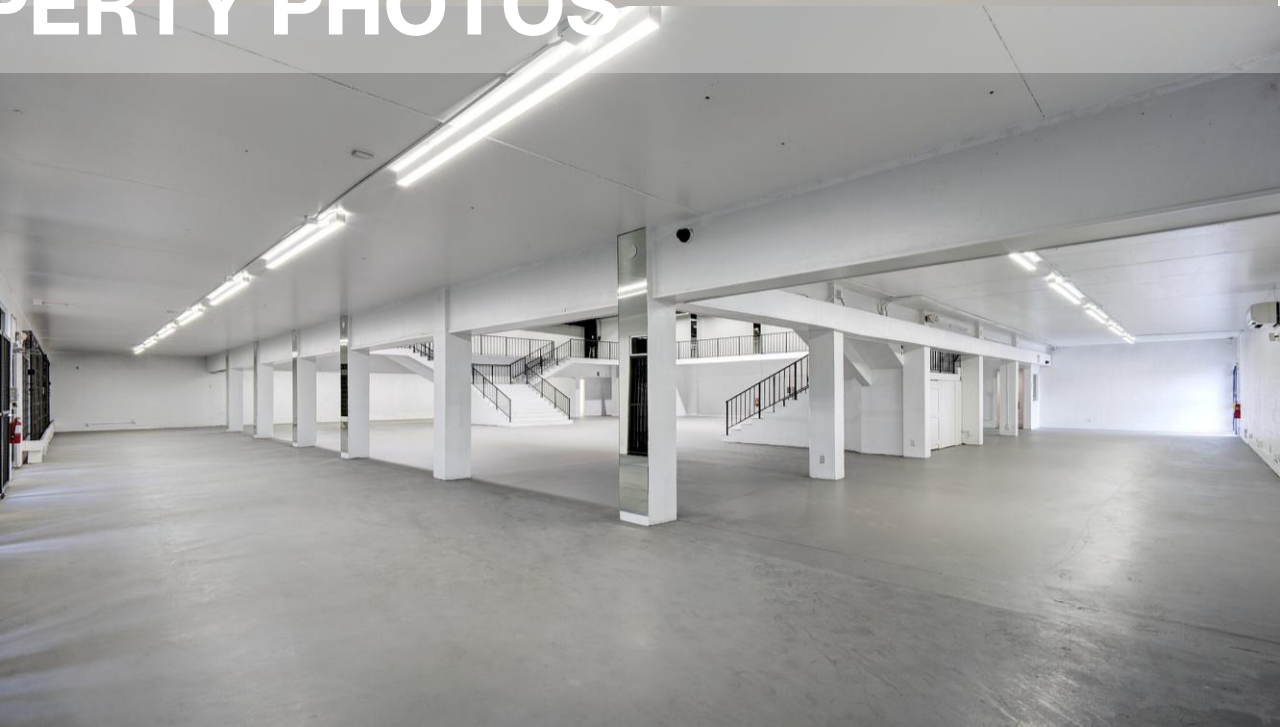
## INTERIOR PROPERTY PHOTOS





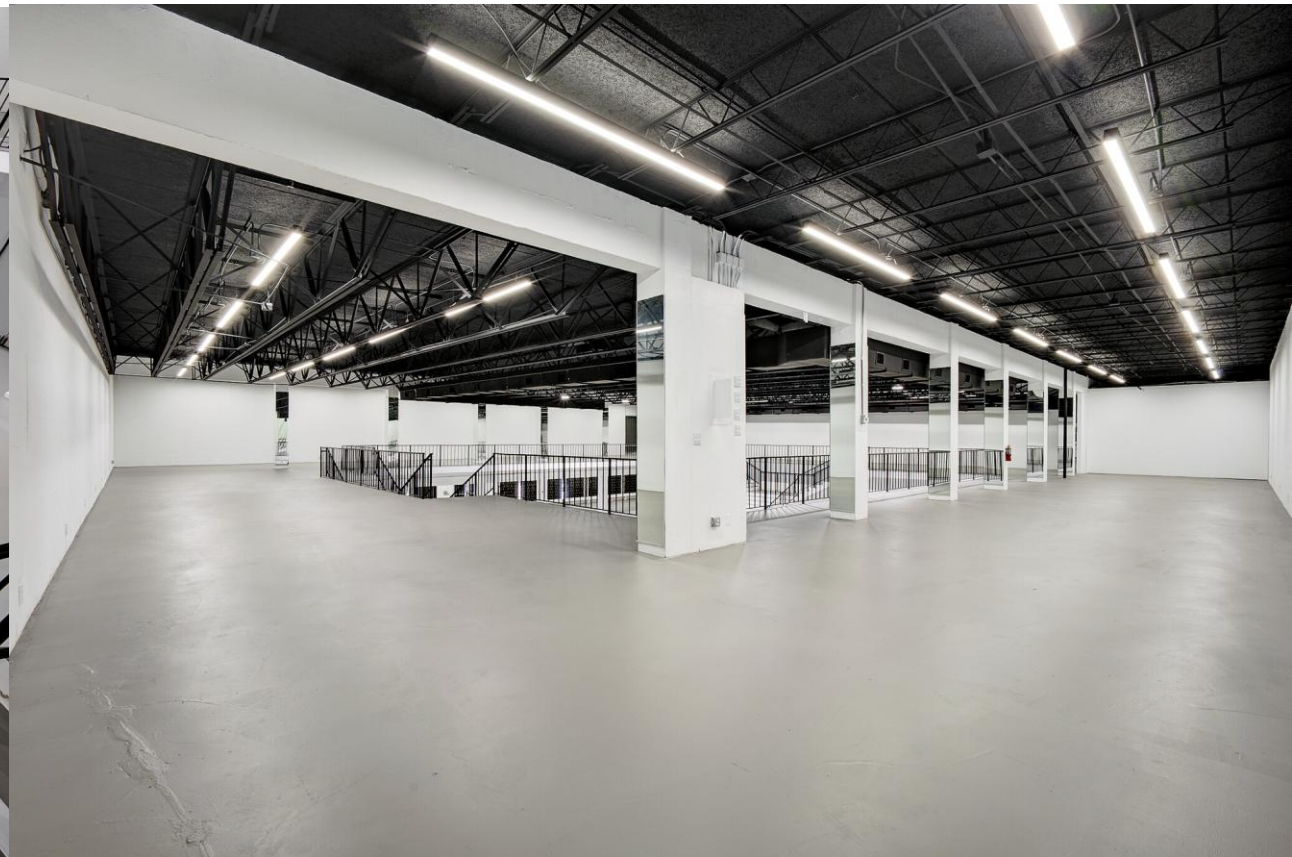
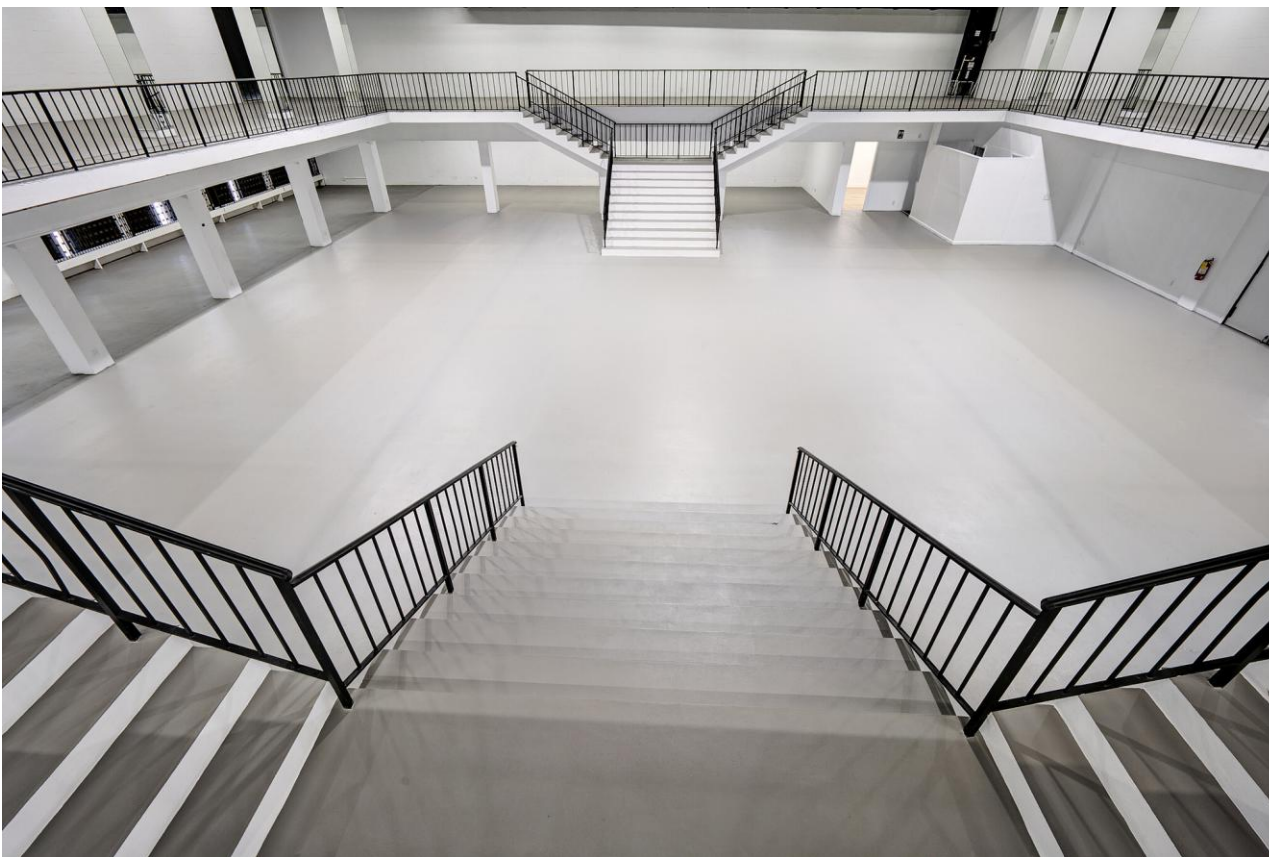


# INTERIOR PROPERTY PHOTOS





# INTERIOR PROPERTY PHOTOS

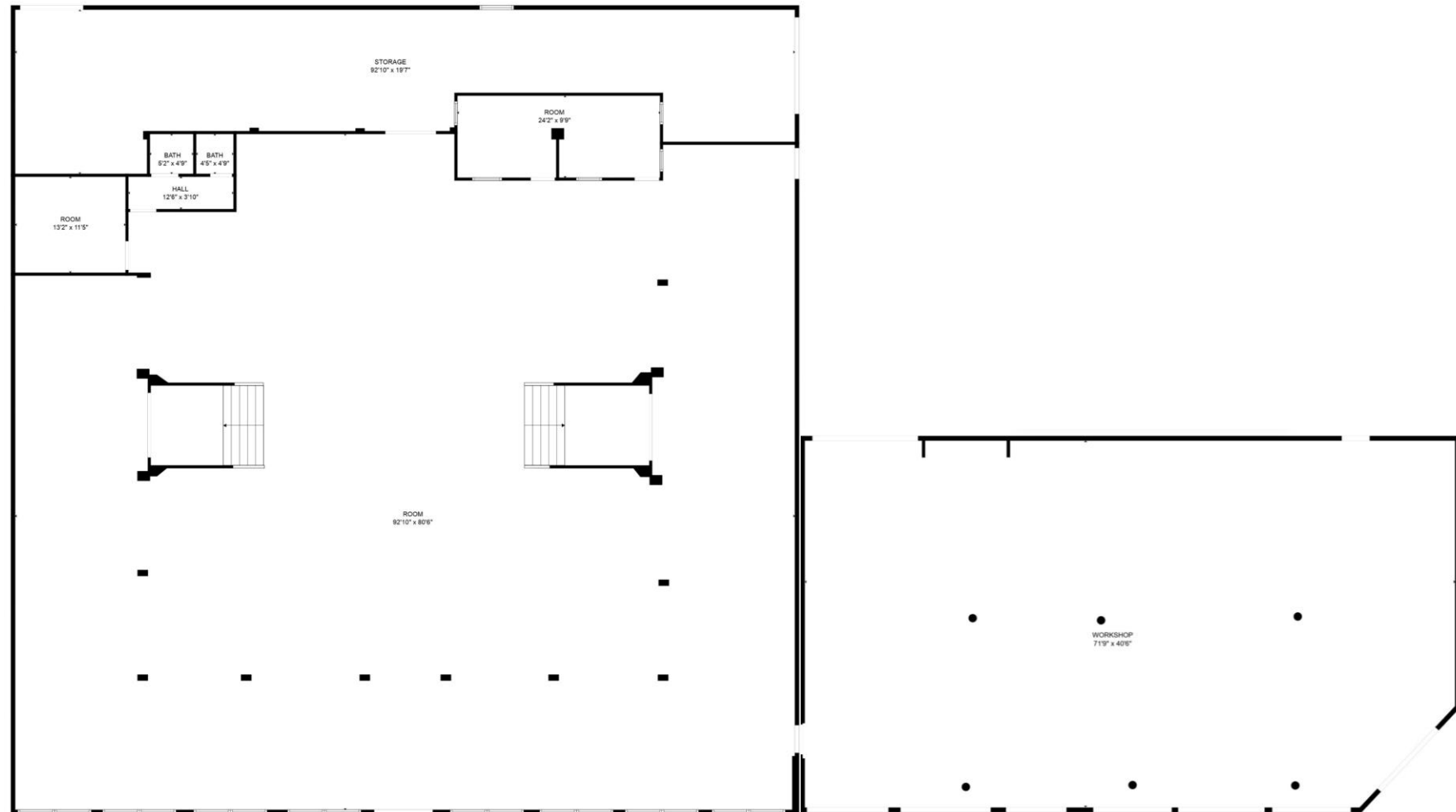








# FLOOR PLAN



FLOOR PLAN CREATED BY CUBICASA APP. MEASUREMENTS DEEMED HIGHLY RELIABLE BUT NOT GUARANTEED.

**TOTAL: 534 sq. ft**  
FLOOR 1: 534 sq. ft  
EXCLUDED AREAS: STORAGE: 1344 sq. ft, ROOM: 6965 sq. ft  
WALLS: 191 sq. ft

FLOOR PLAN CREATED BY CUBICASA APP. MEASUREMENTS DEEMED HIGHLY RELIABLE BUT NOT GUARANTEED.







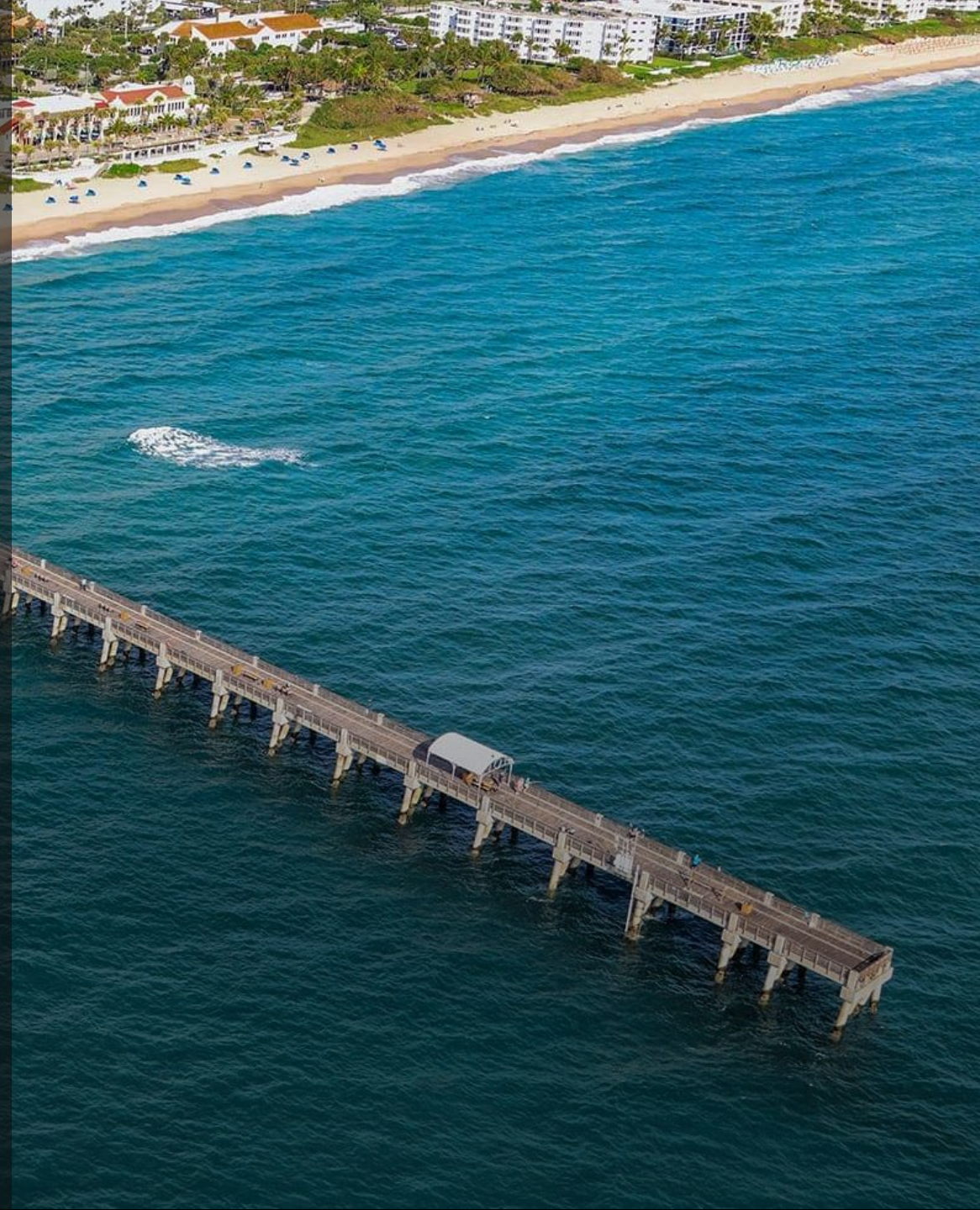
# The Market

## Lake Worth (Palm Beach County)

Lake Worth, Florida, located in Palm Beach County just south of West Palm Beach, is a coastal city known for its vibrant character, historic charm, and artistic energy. The city offers a unique blend of beach-town relaxation and cultural richness, making it an increasingly popular choice for individuals seeking both lifestyle and community. With its colorful downtown, walkable streets, and strong sense of local pride, Lake Worth delivers a welcoming environment for residents from all walks of life. In recent years, Lake Worth has experienced steady revitalization, with investments in its historic districts, parks, and infrastructure. The downtown area, centered around Lake and Lucerne Avenues, features a variety of independent boutiques, cafés, galleries, and live performance venues. The city's annual Street Painting Festival draws thousands of visitors and highlights its strong support for the arts. Meanwhile, the nearby Lake Worth Beach and Municipal Pier provide scenic ocean views and outdoor recreation just minutes from the heart of town. Lake Worth's commitment to sustainability and green living is evident in local initiatives aimed at preserving its natural beauty. Attractions like the Snook Islands Natural Area, with its kayaking trails and wildlife habitat, reflect the city's environmental values. Historic neighborhoods filled with preserved mid-century homes and Key West-style cottages give the city a distinct architectural identity and charm.

With its central location in South Florida, Lake Worth offers convenient access to major roadways such as I-95 and US-1, connecting residents easily to West Palm Beach, Boca Raton, and Fort Lauderdale. Public transportation and proximity to Brightline stations further enhance mobility throughout the region.


The real estate market in Lake Worth currently favors buyers, with increased inventory. Nearby West Palm Beach, with its growing tech sector, bustling Clematis Street nightlife, and institutions like Palm Beach Atlantic University, complements Lake Worth's appeal with a strong regional economy and educational infrastructure.





# CONTACT LEASING

Caio H. Martin  
Current Capital Realty  
[caio@cc-reg.com](mailto:caio@cc-reg.com)

 (781) 367 1454  
LIC # 3251304 (FL)



Current Capital Realty  
4000 Hollywood Blvd, #765-S  
Hollywood, FL 33021 (954) 966-  
8181 [www.currentcapitalgroup.com](http://www.currentcapitalgroup.com)  
FL DRE LIC # CQ1026113



CURRENT CAPITAL  
Real Estate Group



**32 S Dixie Hwy | [View On Map](#)**