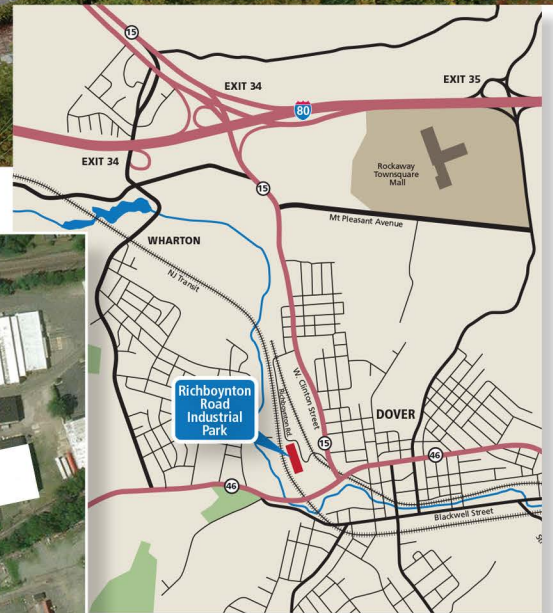


RICHBOYNTON ROAD INDUSTRIAL PARK

52 Richboynton Road
Dover, New Jersey



Richboynton Road Industrial Park is located 25 miles west of Port Newark and 1.25 miles south of Exit 34 off Route 80.



WP Properties

PROPERTY OWNERS & MANAGERS

400 Morris Avenue, Suite 276, Denville, NJ 07834

For leasing and management information please contact:

Jeffrey T. Barnish, Partner
jbarnish@wpproperties.com – 201-873-2787

RICHBOYNTON ROAD INDUSTRIAL PARK

52 Richboynton Road, Dover, NJ

52 Richboynton Road

UNIT 1

10,542 S.F. (1,500 S.F. Office)

12' Ceilings
2 TB, 1 DI
Gas Fired Unit Heaters
LED Lighting

\$11.50/S.F. NNN

\$1.34/S.F. Taxes

\$2.52/S.F. CAM

UNIT 2

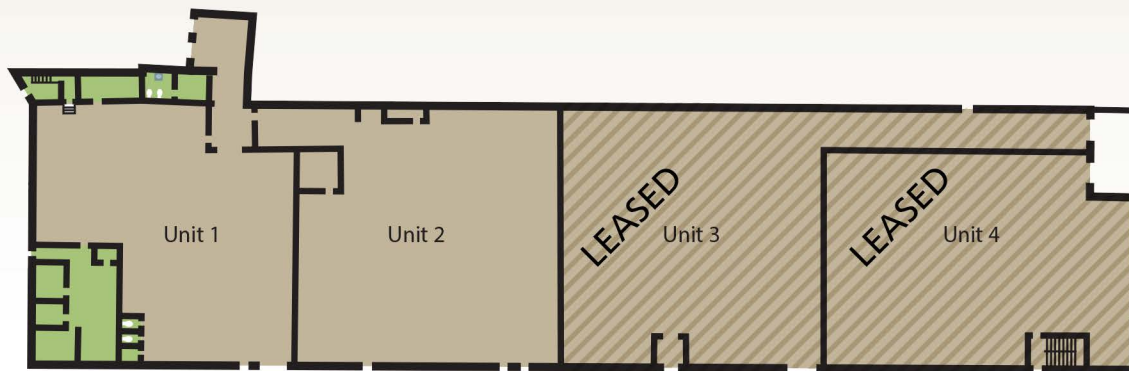
10,360 S.F.

12' Ceilings
2 TB
Gas Fired Unit Heaters
LED Lighting

\$11.25/S.F. NNN

\$1.34/S.F. Taxes

\$2.52/S.F. CAM



PROPERTY OWNERS & MANAGERS

400 Morris Avenue, Suite 276, Denville, NJ 07834

For leasing and management information
please contact:

Jeffrey T. Barnish, Partner

jbarnish@wpproperties.com – 201-873-2787