

port washington, ny

65 shore road

prime gold coast shopping center | former bank space available



DEMOGRAPHICS	1 MILE	3 MILES	5 MILES
Population	18,619	55,583	160,953
Median HHI	\$106,475	\$122,932	\$97,726
Daytime Population	16,946	53,879	169,054

Available	4,388 square feet (former bank)
Asking Rent	Upon request
Extras	\$14 per square foot
Area Retail	Stop & Shop, Home Goods, Burger King, Petland Discounts, Sherwin Williams, Rite Aid, ACE Hardware, West Marine, HSBC, Roslyn Savings Bank and many more
Comments	<ul style="list-style-type: none"> • grocery anchored shopping center • former bank space, available January 2019 • drive thru possible on +/- 3,000 square foot pad site

For More Information:

Jessica Hansen | hansen@sabre.life | T 516 874 8070 x1533

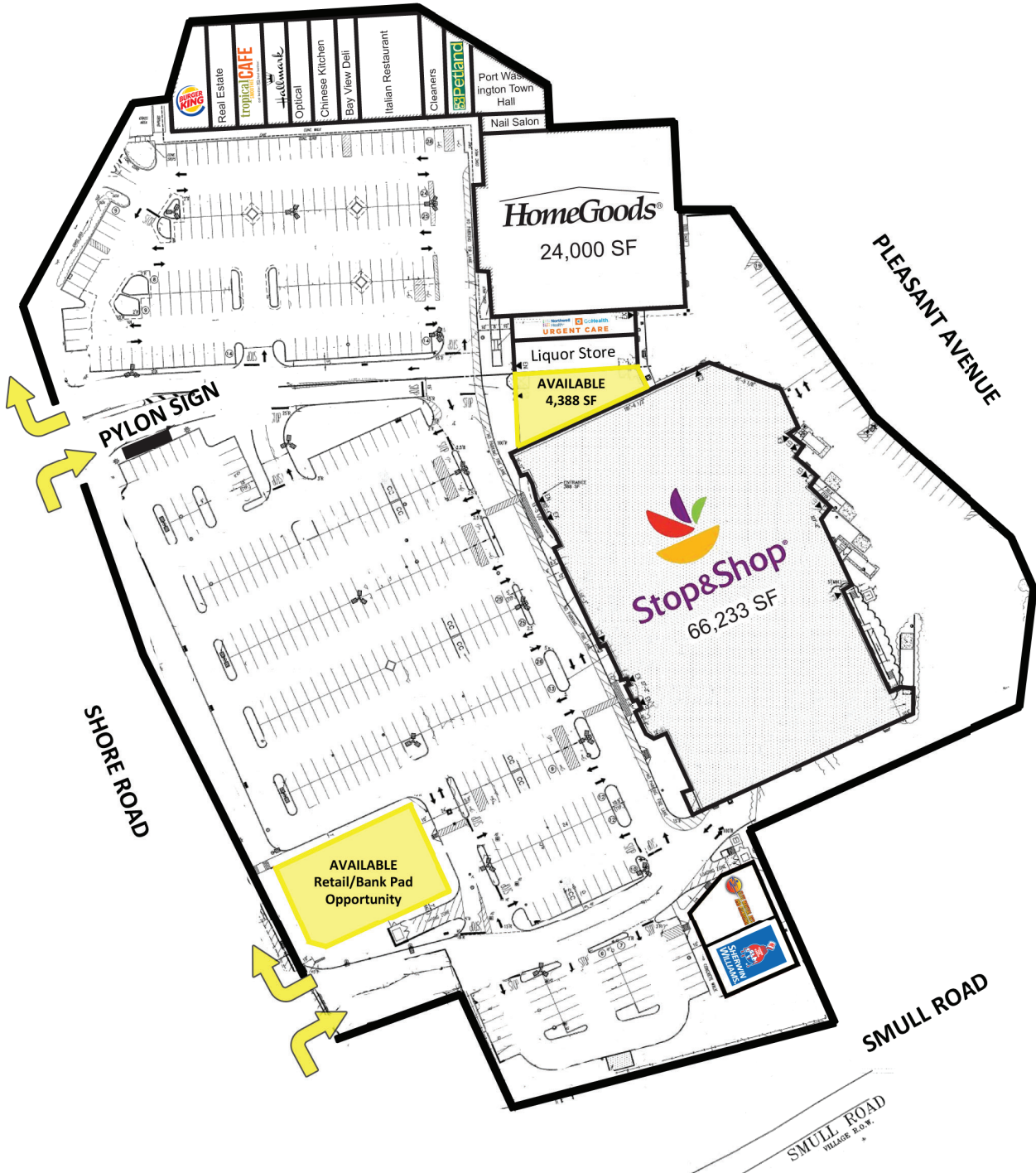
Jayson Siano | siano@sabre.life | T 516 874 8070 x1501

sabre.life



port washington, ny

65 shore road



For More Information:

Jessica Hansen | hansen@sabre.life | T 516 874 8070 x1533

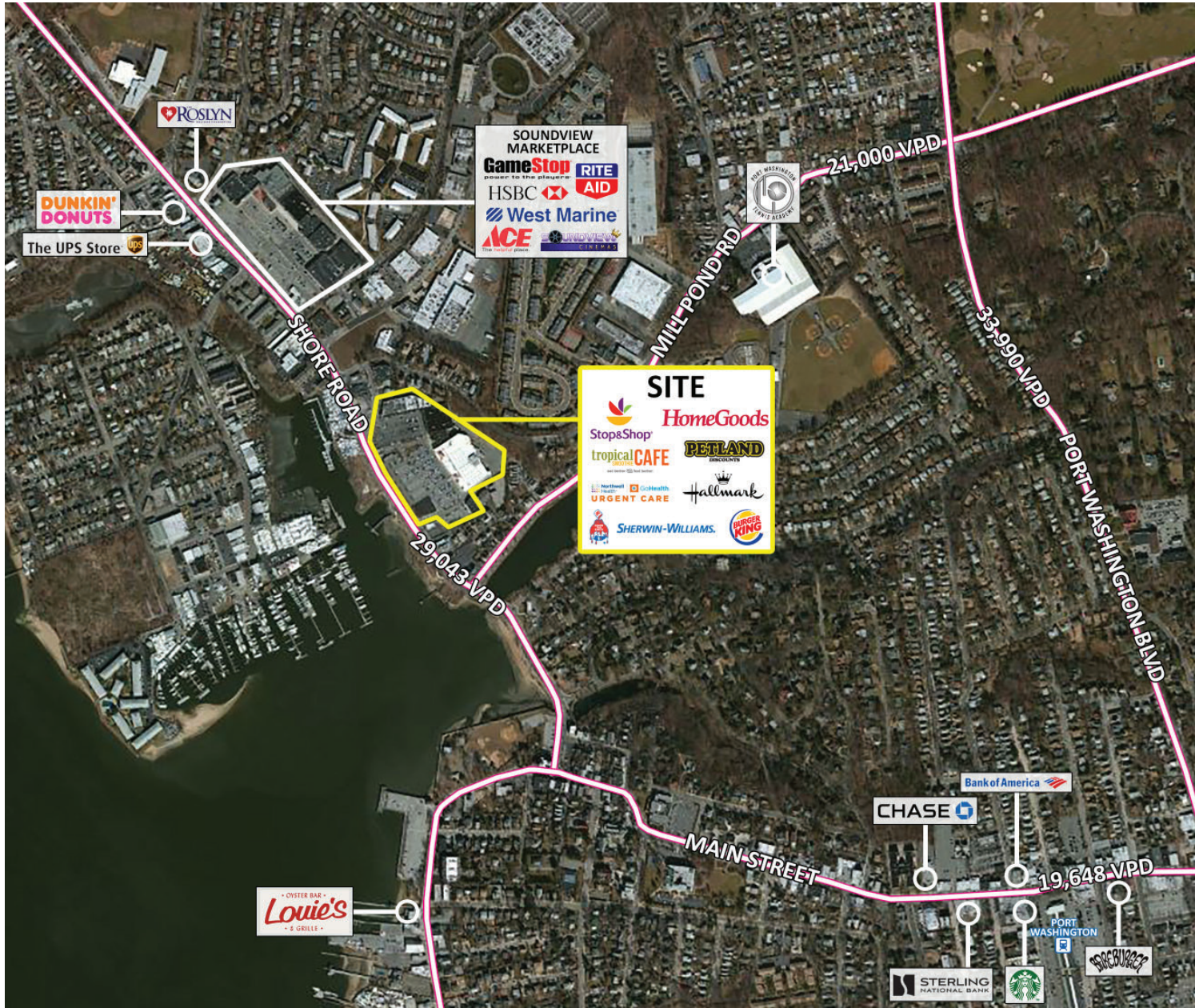
Jayson Siano | siano@sabre.life | T 516 874 8070 x1501

sabre.life



port washington, ny

65 shore road



For More Information:

Jessica Hansen | hansen@sabre.life | T 516 874 8070 x1533

Jayson Siano | siano@sabre.life | T 516 874 8070 x1501

Sabre Real Estate Group, LLC

500 Old Country Road Garden City NY 11530

500 Route 17 South Hasbrouck Heights NJ 07604

sabre.life

© Sabre Real Estate Group, LLC. This information has been obtained from sources believed reliable. We have not verified it and make no guarantee, warranty or representation about it. Any projections, opinions, assumptions or estimates used are for example only and do not represent the current or future performance of the property. You and your advisors should conduct a careful, independent investigation of the property to determine to your satisfaction the suitability of the property for your needs.

