

MURRAY
BUSINESS
CENTER

FOR LEASE

7475 MURRAY DRIVE | STOCKTON | CA



Jim Martin, SIOR
BRE #01214270
jmartin@lee-associates.com
D 209.983.4088

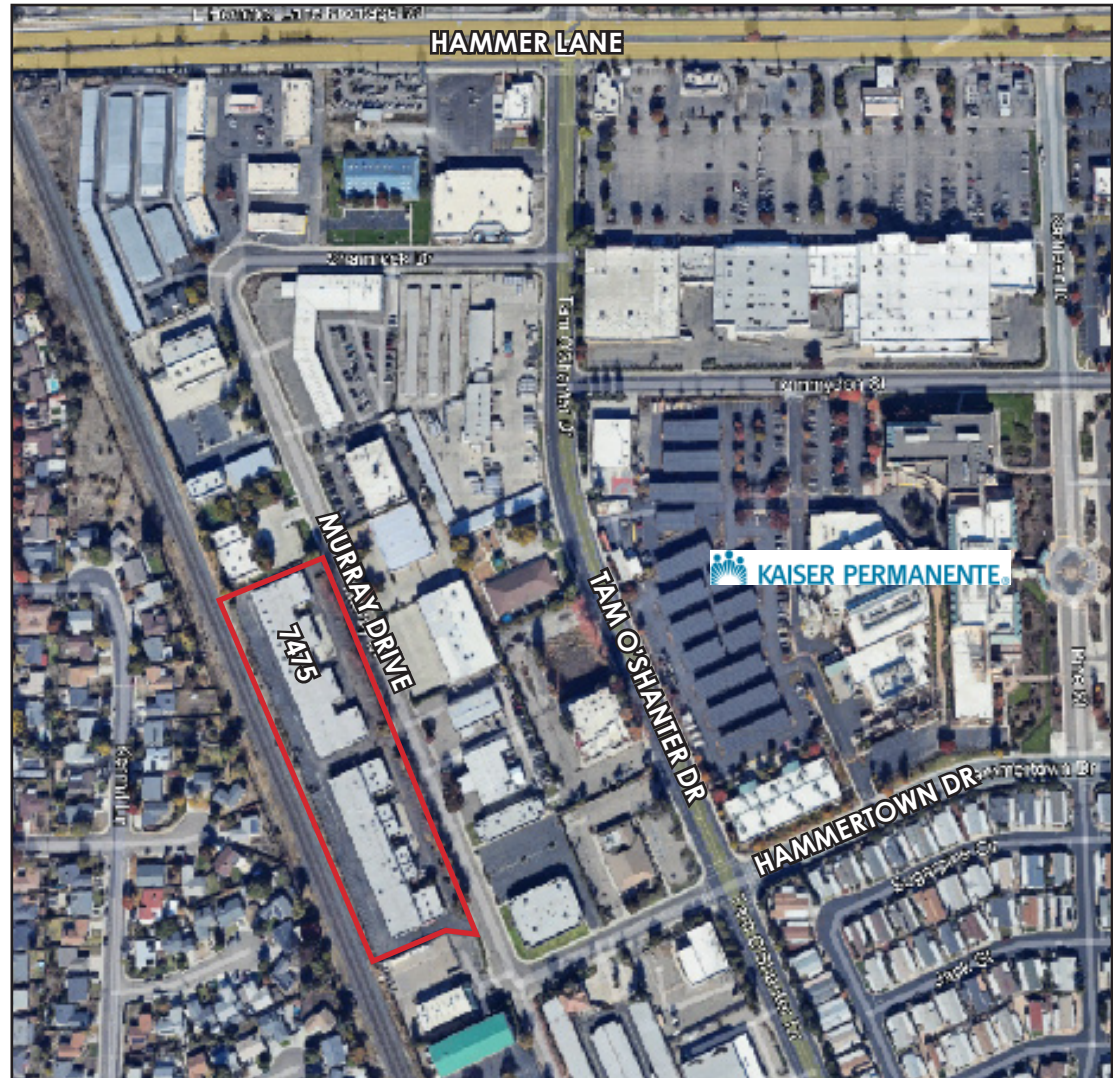
Mason Chambliss
BRE #02237204
mchambliss@lee-associates.com
C 925.336.9660
D 209.983.6831

LEASE RATE: \$0.85 PSF, GROSS (unit 19)

PROPERTY SUMMERY

7475 MURRAY DRIVE | STOCKTON | CA

- AVAILABLE SF: 1,640± SF (Unit #19)
- ZONING: C-G (COMMERCIAL GENERAL)
- AMPLE PARKING
- PROFESSIONALLY MANAGED/MAINTAINED
- BUILDING SIGNAGE AVAILABLE
- GATED PERIMETER



UNIT FEATURES:

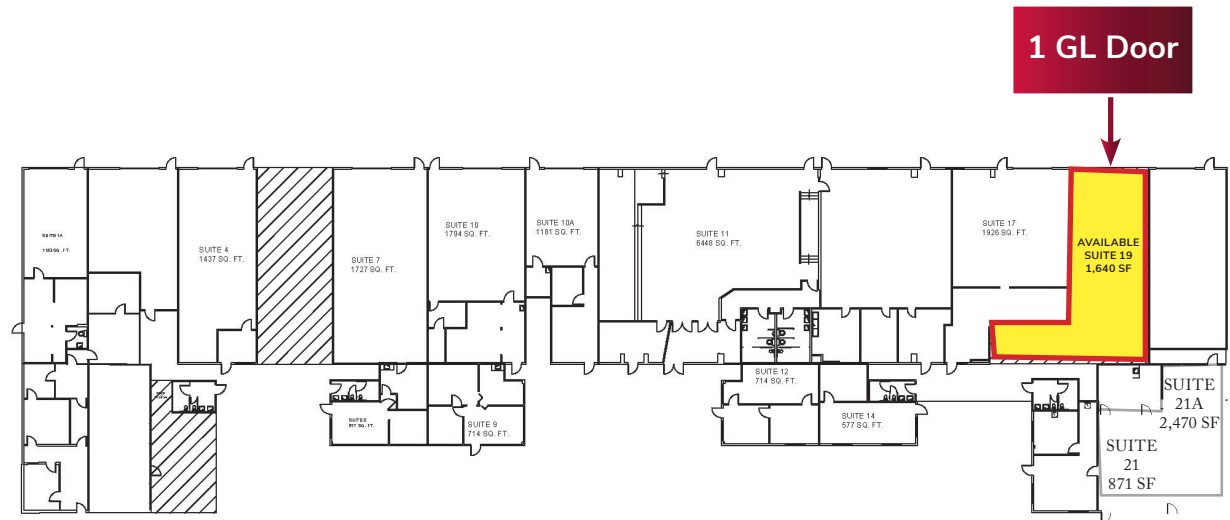
- Office: 1,060± SF
- Warehouse: 580± SF (24x24)
- Grade door: One (1) 10x12
- Sprinklered
- Fluorescent lighting
- Personal restroom & Exterior restroom
- 15' clear

LEASE RATE: \$0.85 PSF GROSS / \$1,400 / MONTH



FLOOR PLAN

7475 MURRAY DRIVE, UNIT 19 | STOCKTON | CA
\$1,400 MO/GROSS
(\$0.85 PSF)



Jim Martin, SIOR
BRE #01214270
jmartin@lee-associates.com
D 209.983.4088

Mason Chambliss
BRE #02237204
mchambliss@lee-associates.com
C 925.336.9660
D 209.983.6831

All information furnished regarding property for sale, rental or financing is from sources deemed reliable, but no warranty or representation is made to the accuracy thereof and same is submitted to errors, omissions, change of price, rental or other conditions prior to sale, lease or financing or withdrawal without notice. No liability of any kind is to be imposed on the broker herein.

LOCATION MAP

7475 MURRAY DRIVE | STOCKTON | CA

